

ABBREVIATIONS

Table of abbreviations including ANCHOR BOLT, AMERICAN CONCRETE INSTITUTE, ABOVE FINISHED FLOOR, etc.

GENERAL NOTES

GENERAL
1. FURNISH ALL LABOR, MATERIALS AND EQUIPMENT NECESSARY TO COMPLETE THE WORK SHOWN OR IMPLIED BY THESE DRAWINGS. SHOP DRAWINGS SHALL BE SUBMITTED TO THE ARCHITECT AND ENGINEER FOR REVIEW AND APPROVAL PRIOR TO COMMENCING WORK.

DESIGN LOADS

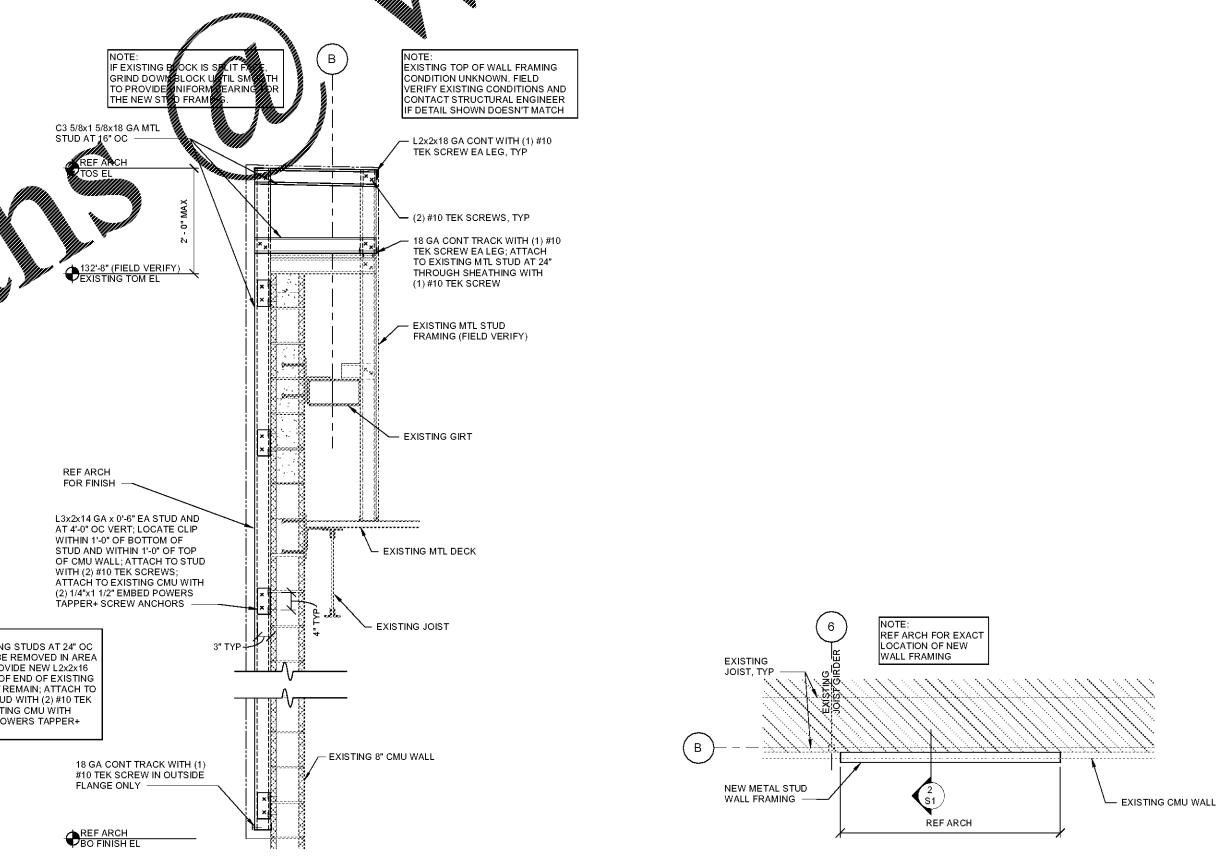
Table of design loads including BUILDING CODE (2018 IBC WITH 2020 GEORGIA STATE AMENDMENTS), GRAVITY LOADS (ROOF DEAD LOAD, ROOF LIVE LOAD, ROOF SNOW LOADS), LATERAL LOADS (WIND LOADS, SEISMIC LOADS).

STATEMENT OF SPECIAL INSPECTIONS

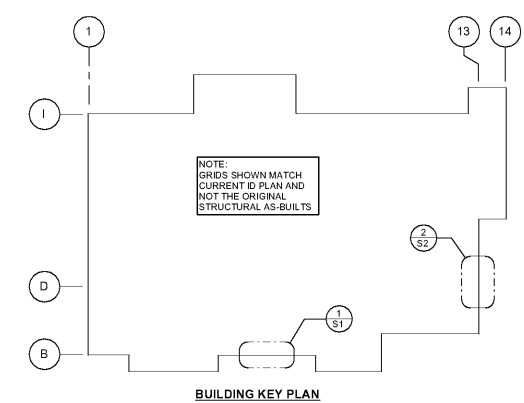
SPECIAL INSPECTIONS ARE REQUIRED. REFER TO APPENDIX B OF THE PROJECT SPECIFICATIONS FOR THE FOLLOWING INFORMATION REGARDING THE REQUIREMENTS OF SPECIAL INSPECTIONS.

www.LDILine.com

Order Plans @



2 MAIN ID PARAPET EXTENSION (NO CORNICE) 3/4" = 1'-0"
1 MAIN ID PARAPET EXTENSION FRAMING PLAN 1/8" = 1'-0"



BUILDING KEY PLAN



ARCHITECT OF RECORD:
BRR ARCHITECTURE, INC.
8750 ANDREWS BLVD
MARIETTA, GA 30067

CONSULTANTS:
JOHNSTON BURKHOLDER ASSOCIATES
1815 CENTRAL EXPRESSWAY, SUITE 401
ATLANTA, GA 30329

Walmart
ATLANTA (GRESHAM), GA
2427 GRESHAM RD SE 30316
STORE NO: 05709

ISSUE BLOCK table with columns for description, date, and status.

CHECKED BY: JSH
DRAWN BY: BJJ
PROTO CYCLE: 09/25/20
DOCUMENT DATE: 11/20/20

NOT FOR CONSTRUCTION

MAIN ID PARAPET EXTENSION

SHEET: S1