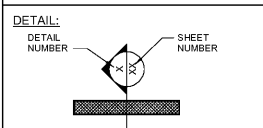
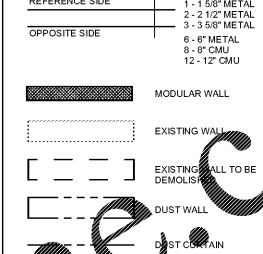


**PARTITION LEGEND**



**PLAN:**  
NUMBER INDICATES STUD HEIGHT  
NO NUMBER INDICATES STUD HEIGHT TO BOTTOM OF ROOF DECK

LETTER INDICATES PARTITION TYPE  
REF PLANS



**SHEET NOTES**

- INTERIOR PLAN DIMENSIONS SHALL BE TO FACE OF FINISH UNLESS NOTED OTHERWISE.
- SUPPORT COUNTERTOPS WITH TEMPORARY 2x4 LEGS UNTIL BASE CABINETS ARE INSTALLED. THEN INSTALL PERMANENT 1 1/4" DIAMETER PIPE SUPPORT LEGS AT OPEN SPANS.
- PAINT ALL EXPOSED CONDUIT TO MATCH ADJACENT WALLS.
- OWNER FURNISHED AND INSTALLED ITEMS SHOWN DASHED UNO.
- PROVIDE SOUND ATTENUATION IN ALL HEALTH SERVICE ROOM PARTITIONS WHERE FINISHES ARE REMOVED.
- A TEMPORARY PHARMACY IS NOT REQUIRED. REF PHASING SHEETS.
- THIS PROTOTYPE USES PRE-WIRED MODULAR WALLS. COORDINATE WITH THE LOCAL JURISDICTION ON FINAL INSPECTIONS.
- DRILL HOLES IN EXISTING COUNTERTOP FOR CABLING AND SEAL RAW EDGES WITH CLEAR POLYURETHANE FINISH. COORDINATE NUMBER AND LOCATION OF HOLES WITH ELECTRICAL DRAWINGS.
- REFER TO MANUFACTURERS INSTALLATION DRAWINGS AND SPECIFICATIONS FOR ADDITIONAL INFORMATION AND SPECIFIC DETAILS ON THE MODULAR WALLS AND COMPONENTS.
- GC TO COORDINATE ELECTRICAL INSPECTION FOR NEW POWER/DATA IN EXISTING HEALTH SERVICES ROOM WALL.

**NOTES**

- 6.27 48" HIGH MODULAR WALL WITH INSIDE CORNER TRIM



ARCHITECT OF RECORD:  
JOHN P. FRANK  
5125 NORTON AVE  
ATLANTA, GA 30342  
www.brr.com  
TEL: 404-252-9955  
FAX: 404-252-9544

STIPULATION FOR REUSE:  
THIS DRAWING IS THE PROPERTY OF BRR. IT IS TO BE USED ONLY FOR THE PROJECT AND SITE SPECIFICALLY IDENTIFIED HEREON. IT IS NOT TO BE REPRODUCED, COPIED, OR TRANSMITTED IN ANY FORM OR BY ANY MEANS, ELECTRONIC OR MECHANICAL, INCLUDING PHOTOCOPYING, RECORDING, OR BY ANY INFORMATION STORAGE AND RETRIEVAL SYSTEM, WITHOUT THE WRITTEN PERMISSION OF BRR.

CONSULTANTS

Walmart  
ATLANTA (GRESHAM), GA  
2427 GRESHAM RD SE 30316  
STORE NO. 03709-233  
JOB NUMBER: 9845888 | PHOTO:

**ISSUE BLOCK**

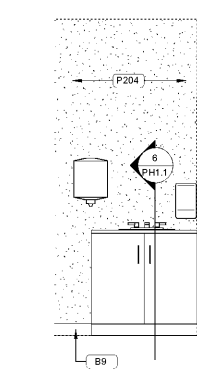
NO.	DESCRIPTION	DATE

CHECKED BY: MED  
DRAWN BY: MED  
PROTO CYCLE: 10/30/20  
DOCUMENT DATE: 11/20/20

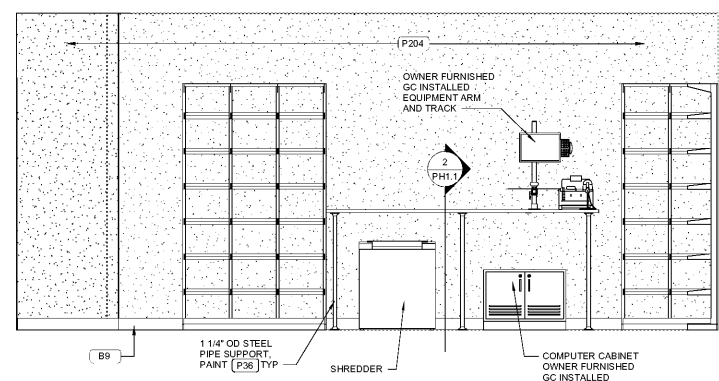
NOT FOR CONSTRUCTION

PHARMACY PLAN AND ELEVATIONS

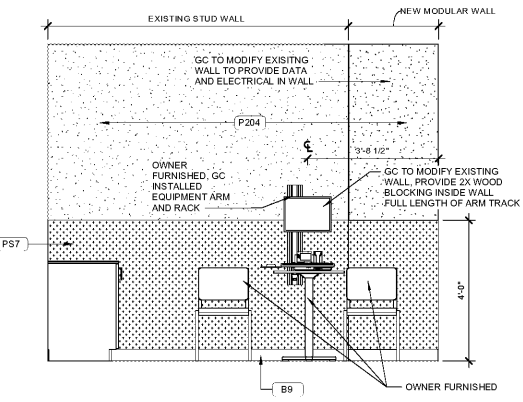
SHEET: PH1



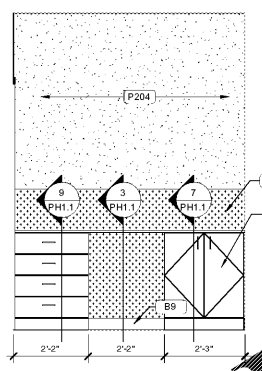
9 PHARMACY SINK ELEVATION  
1/2" = 1'-0"



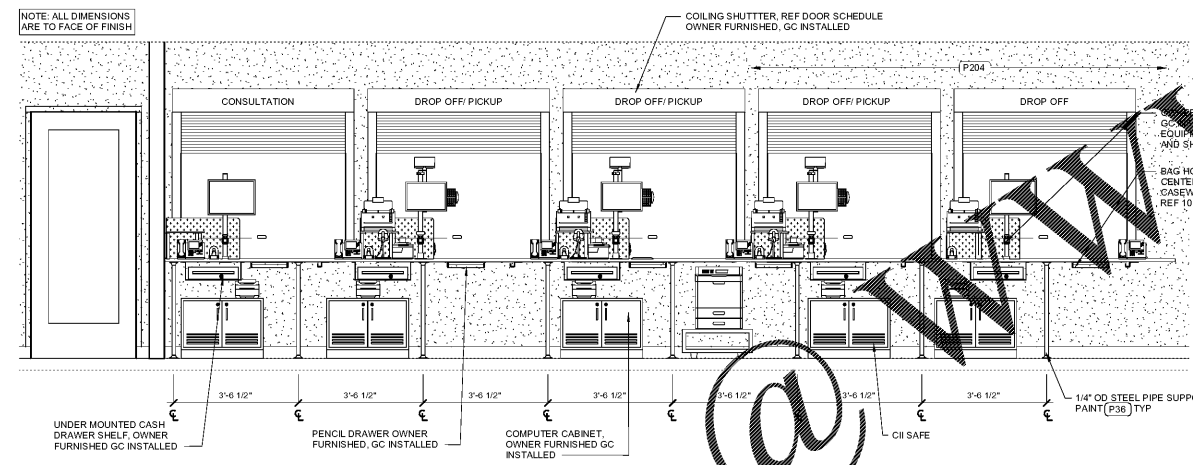
8 INTERIOR ELEVATION  
1/2" = 1'-0"



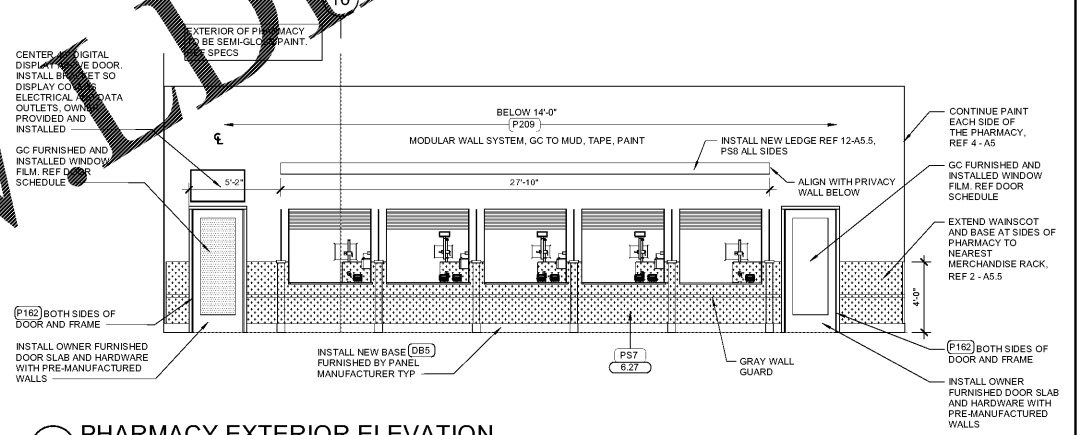
7 INTERIOR ELEVATION  
1/2" = 1'-0"



6 INTERIOR ELEVATION  
1/2" = 1'-0"



5 PHARMACY COUNTER ELEVATION  
1/2" = 1'-0"



4 PHARMACY EXTERIOR ELEVATION  
1/4" = 1'-0"

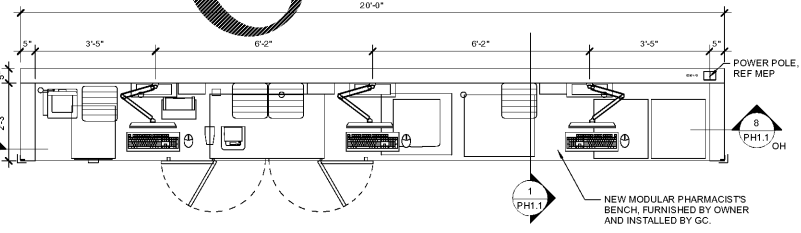
**RESPONSIBILITY NOTES:**

- MODULAR WALL AND CEILING PANEL MANUFACTURER:** CONTACT IS HAINES, JONES & CADBURY. FURNISHING ALL MODULAR WALL PANELS AND CEILING PANELS, ASSOCIATED HARDWARE, PRE-FINISHED DOOR FRAMES AND DOOR SLABS WITH FILM INSTALLED. ALL DOOR HARDWARE, COILING SHUTTERS, ALL BASE, PRE-FINISHED PRIVACY WALLS ON 42HS AND WNM 42HS. COMPLETE INSTALLATION DRAWINGS.
- MODULAR MILLWORK MANUFACTURER:** CONTACT IS HAINES, JONES & CADBURY. FURNISHING ALL NEW COUNTERTOPS AND PRE-FINISHED LEGS UNDERNEATH. ALL PLUG AND PLAY ELECTRICAL, CPU CABINETS AND PENCIL DRAWERS UNDERNEATH AT FRONT COUNTER AND PHARMACISTS BENCH. 42HC HS FURNISHING ENTIRE FRONT COUNTER SYSTEM, PRE-FINISHED, INCLUDING PRIVACY WALLS. COMPLETE INSTALLATION DRAWINGS.
- OWNER:** FURNISHING CPU CAGES MOUNTED ON WALLS UNDER COUNTERS. ALL COMPUTER EQUIPMENT, BAG HOOKS AND CONSTRUCTION ITEMS TYPICALLY FURNISHED FOR A REMODEL.
- GENERAL CONTRACTOR (GC):** INSTALLING ALL OF THE ABOVE EXCEPT EQUIPMENT.
- FOR MODULAR WALL PANEL AND MODULAR MILLWORK COMPONENTS COORDINATION CONTACT:** HAINES, JONES & CADBURY. CUSTOMER SERVICE (800) 499-7099. MODULAR@HJCINC.COM

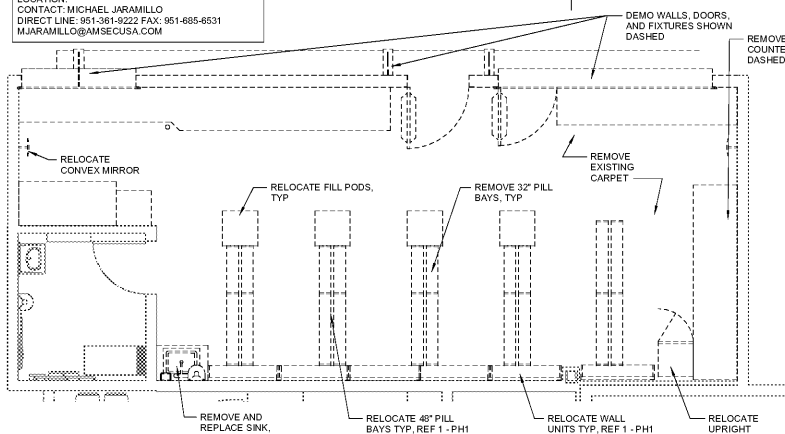
ACTUAL PANEL SIZES MAY VARY BASED ON FIELD CONDITIONS. GC TO COORDINATE WITH PANEL MANUFACTURER  
GC TO REFERENCE MANUFACTURERS INSTALLATION DRAWINGS FOR SEQUENCE OF WALL INSTALLATION ASSEMBLY, AND OVERSIZED PANELS THAT WILL NEED TO BE MODIFIED IN THE FIELD TO FIT.

SAFE MUST BE RELOCATED AND SERVICED BY APPROVED TECHNICIANS ONLY. GC TO PREPARE AREA WHERE SAFE WILL BE RELOCATED PER PLANS, INCLUDING RELOCATING CPU ON BACK WALL. AS NEEDED, REMOVE CARPET THAT WILL BE UNDER THE SAFE AND ADD DATA. THE SAFE WILL USE AN EXISTING ELECTRICAL OUTLET. GC TO COORDINATE WITH THE MANUFACTURERS RELOCATION CREW. REFERENCE PH1 FOR NEW LOCATION.  
CONTACT: MICHAEL JARAMILLO  
DIRECT LINE: 951-361-9222 FAX: 951-885-6531  
MJARAMILLO@AMSECUSA.COM

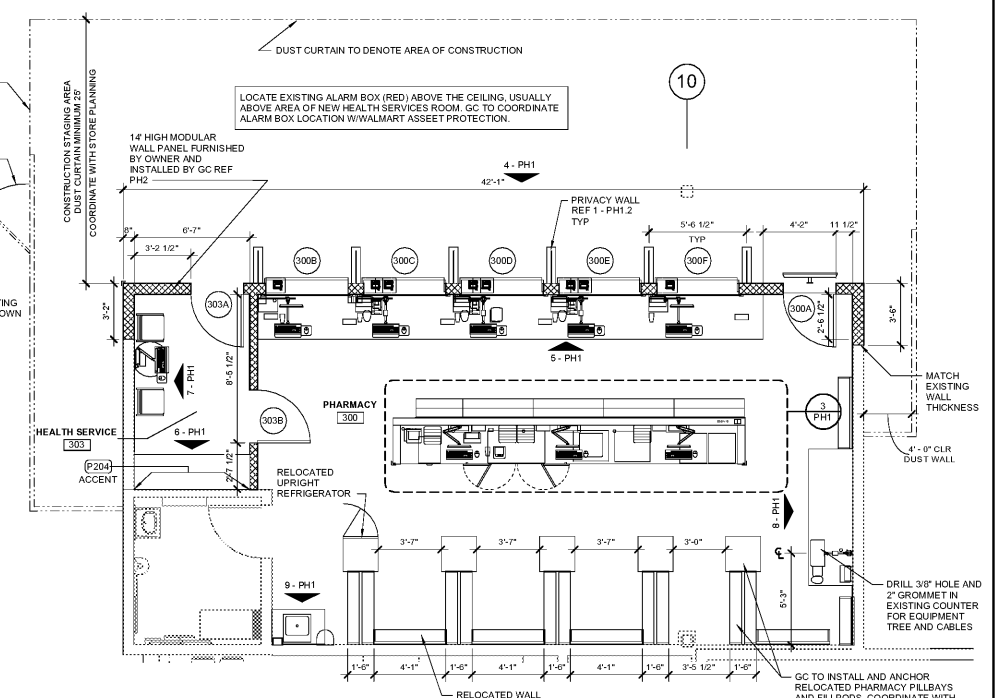
EXISTING CEILING JOISTS AND MESH TO REMAIN, TYP  
EXISTING CEILING GRID, LIGHTS AND DIFFUSERS TO REMAIN



3 ENLARGED COUNTER PLAN  
1/2" = 1'-0"



2 PHARMACY DEMO PLAN  
1/4" = 1'-0"



1 PHARMACY FLOOR PLAN  
1/4" = 1'-0"

Order Plans @

WWW.DLINE.COM