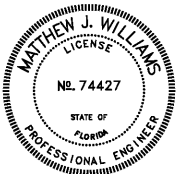


JAMES E. WILKERSON

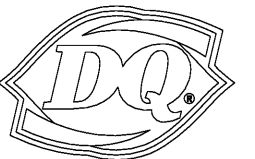
A.I.A.

119 East Tallulah Drive
Greenville, S.C. 29605
864-370-2582
864-240-5375 f



FLA REG. PE 74427
JOB NO. 202016

DQ GRILL & CHILL
US HWY 90 (LOT 2)
GLEN ST MARY, FL
32040



GRILL & CHILL

AMERICAN DAIRY QUEEN
MINNEAPOLIS, MN U.S.A.

*REGISTERED U.S. PATENT OFFICE.
AMERICAN DAIRY QUEEN CORPORATION.
THIS DRAWING, ITS DESIGN DETAIL AND
INVENTION ARE THE PROPERTY OF
AMERICAN DAIRY QUEEN INC. (ADQ) AND
SHALL NOT BE COPIED IN ANY MANNER
NOR DISCLOSED TO ANY OUTSIDE
PARTY WITHOUT ADQ CONSENT.

BUILDING TYPE:
DAIRY QUEEN GRILL & CHILL
CORE66
STORE No. 45461

DRAWN, CHECKED, & APPROVED BY: ADQ
DESIGN-ARCHITECTURE-CONSTRUCTION
(DAC) DEPARTMENT

THIS IS "PLAN" NORTH
FOR ACTUAL BUILDING
ORIENTATION REFER TO
SITE PLAN (BY OTHERS)

ISSUE DATE:	10/30/2020
REVISION DATE:	10/30/2020
1	ISSUE FOR CONSTRUCTION
2	
3	
4	
5	
6	

EXHAUST HOOD
DETAIL

SHEET NUMBER:
M4.1

HOOD INFORMATION -- Job#4395736

HOOD NO	TAG	MODEL	LENGTH	MAX COOKING TEMP	TYPE	APPLIANCE DUTY	DESIGN CFM/ft	TOTAL EXH CFM	EXHAUST PLENUM RISER(S)						HOOD CONSTRUCTION	HOOD CONFIG		
									WIDTH	LENG	HEIGHT	DIA	CFM	VEL		SP	END TO END	ROW
1	Char	5430 ND-2	4' 0"	600 Deg	I	Heavy	275	1100			4"	12"	1100	1401	-0.602"	430 SS Where Exposed	ALONE	ALONE
2	Fryer	5430 ND-2	5' 0"	450 Deg	I	Medium	200	1000			4"	12"	1000	1273	-0.410"	430 SS Where Exposed	ALONE	ALONE

HOOD INFORMATION

HOOD NO.	TAG	TYPE	FILTER(S)				LIGHT(S)				UTILITY CABINET(S)				FIRE SYSTEM PIPING	HOOD HANGING WGT	
			QTY.	HEIGHT	LENGTH	EFFICIENCY @ 7 MICRONS	QTY.	TYPE	WIRE GUARD	LOCATION	SIZE	TYPE	SIZE	MODEL #			QUANTITY
1	Char	Captrate Solo Filter	2	20"	20"	85% See Filter Spec.	3	L55 Series E26	NO	Right	12"x54"x30"	Ansul R102	3.0/3.0	DCV-2011	1 Light 1 Fan	YES	535 LBS
2	Fryer	Captrate Solo Filter	3	20"	16"	85% See Filter Spec.	2	L55 Series E26	NO							YES	318 LBS

HOOD OPTIONS

HOOD NO.	TAG	OPTION
1	Char	FIELD WRAPPER 12.00" High Front, Left, Right
		BACKSPLASH 128.00" High X 91.00" Long 430 SS Vertical
		LEFT SIDESPLASH 128.00" High X 72.00" Long 430 SS Vertical
		BACKSPLASH - INSIDE CORNER 80.00" High X 2.00" Leg Length 430 SS Vertical
		RISER SENSOR INSTALL 6IN PLEN
		RIGHT VERTICAL END PANEL 27" Top Width, 21" Bottom Width, 80" High Insulated 430 SS
2	Fryer	FIELD WRAPPER 12.00" High Front, Left, Right
		BACKSPLASH 128.00" High X 96.00" Long 430 SS Vertical
		LEFT QUARTER END PANEL 23" Top Width, 0" Bottom Width, 23" High 430 SS
		RIGHT QUARTER END PANEL 23" Top Width, 0" Bottom Width, 23" High 430 SS
		RISER SENSOR INSTALL 6IN PLEN

SPECIFICATION: CAPTRATE GREASE-STOP SOLO FILTER

THE CAPTRATE GREASE-STOP SOLO FILTER IS A SINGLE-STAGE FILTER FEATURING A UNIQUE S-BAFFLE DESIGN IN CONJUNCTION WITH A SLOTTED REAR BAFFLE DESIGN, TO DELIVER EXCEPTIONAL FILTRATION EFFICIENCY.

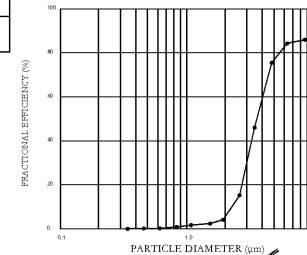
FILTER IS STAINLESS STEEL CONSTRUCTION, AND SIZED TO FIT INTO STANDARD 2-INCH DEEP HOOD CHANNEL(S).

UNITS SHALL INCLUDE STAINLESS STEEL HANDLES AND A FASTENING DEVICE TO SECURE THE TWO COMPONENTS WHEN ASSEMBLED.

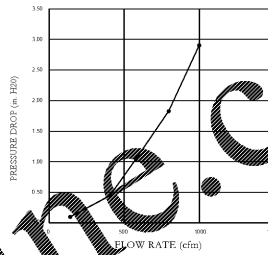
GREASE EXTRACTION EFFICIENCY PERFORMANCE SHALL REMOVE AT LEAST 75% OF GREASE PARTICLES FIVE MICRONS IN SIZE, AND 85% GREASE PARTICLES SEVEN MICRONS IN SIZE AND LARGER, WITH A CORRESPONDING PRESSURE DROP NOT TO EXCEED 1.0 INCHES OF WATER GAUGE.

THE CAPTRATE GREASE-STOP SOLO WAS TESTED TO ASTM STANDARD ASTM F2519-05.

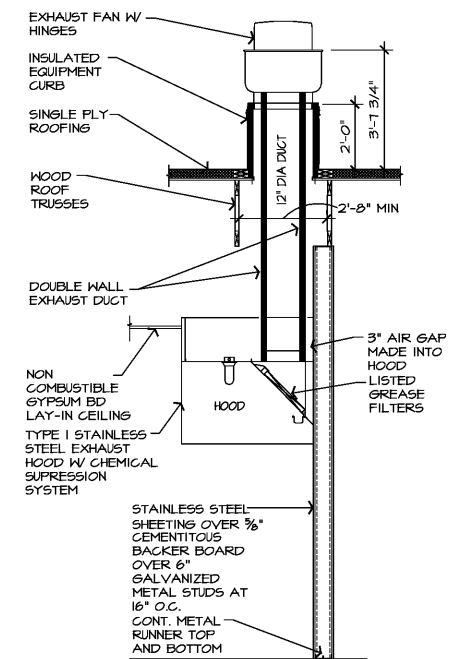
EFFICIENCY VS. PARTICLE DIAMETER



PRESSURE DROP VS. FLOW RATE



CAPTRATE FILTERS ARE BUILT IN COMPLIANCE WITH:
NFPA #96
NSF STANDARD #2
UL STANDARD #1046
INT. MECH. CODE (IMC)
ULC-S649



(A) SECT AT GREASE DUCT
M4.1 SCALE: 3/8" = 1'-0"

Order Plans @ www.LDILine.com

FOR QUESTIONS, CALL
CAPTIVEAIRE REGION 71 - IA, NE, SD
reg71@captiveaire.com
PHONE: (319) 221-1188, (877) 321-1188