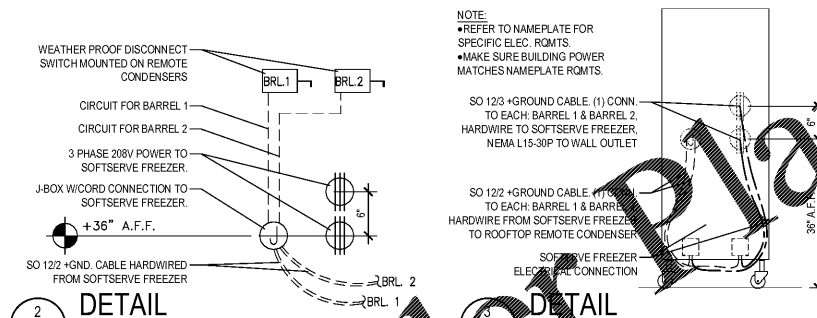
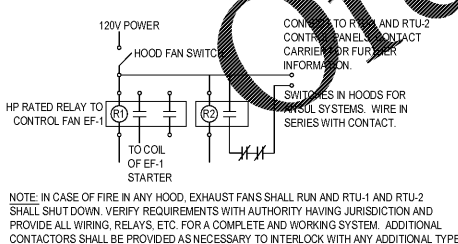


THIS PLAN WAS DEVELOPED USING THE NATIONAL ELECTRICAL CODE 2017

1 POWER PLAN
E1.1 SCALE: 1/4" = 1'-0"



2 DETAIL
E1.1

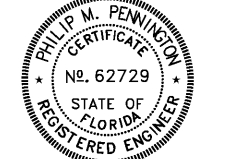


4 DETAIL FOR REFERENCE
E1.1

EQUIPMENT/HVAC NOTES (GRILL & CHILL)	
EF-1	EXHAUST FAN #1: 3/4 HP-208V/3PH. ELECTRICAL CONTRACTOR TO FIELD WIRE KITCHEN FAN CONTROL SWITCH PROVIDED BY HOOD MANUFACTURER TO EXHAUST HOOD AND HOOD LIGHTING. ELECTRICAL CONTRACTOR FIELD WIRE SHUNT TRIP BREAKERS TO SPARE RELAY CONTACTS IN KITCHEN FAN CONTROL SWITCH. FIELD VERIFY AND COORDINATE WITH OTHER TRADES. STARTER TO BE MOUNTED BELOW CEILING ADJACENT TO THE HOOD.
EF-2	EXHAUST FAN #2: 1/2 HP-120V/1PH. WP TOGGLE SWITCH ON UNIT BY MANUFACTURER. CONNECT TO RESTROOM LIGHTING CIRCUIT. PROVIDE RELAYS AND MISCELLANEOUS HARDWARE AS REQUIRED.
RTU-1	ROOFTOP UNIT #1: 208V/3PH. E.C. TO MAKE FINAL CONNECTIONS TO SERVICE DISCONNECT AND GFI RECEPTACLE PROVIDED ON UNIT. PROVIDE JUNCTION BOX AND 1/2" EMPTY CONDUIT WITH PULL LINE STUBBED TO ACCESSIBLE CEILING SPACE FOR THERMOSTAT PROVIDED BY OTHERS. E.C. TO PROVIDE NYLON BUSHINGS. COORDINATE LOCATION WITH MECHANICAL DRAWINGS.
RTU-2	ROOFTOP UNIT #2: 208V/3PH. E.C. TO MAKE FINAL CONNECTIONS TO SERVICE DISCONNECT AND GFI RECEPTACLE PROVIDED ON UNIT. PROVIDE JUNCTION BOX AND 1/2" EMPTY CONDUIT WITH PULL LINE STUBBED TO ACCESSIBLE CEILING SPACE FOR THERMOSTAT PROVIDED BY OTHERS. E.C. TO PROVIDE NYLON BUSHINGS. COORDINATE LOCATION WITH MECHANICAL DRAWINGS.
193	DISPLAY FREEZER: 115V/60/1, E.C. TO PROVIDE 8' OF CORD AND NEMA L5-15 PLUG & RECEPTACLE FOR EACH FREEZER. ROOF TOP COMPRESSOR: 208-230V/60/1, E.C. PROVIDE WATERPROOF 3/4" FUSED DISCONNECT SWITCH FOR EACH UNIT. E.C. TO MAKE FINAL CONNECTION.
203	SOFTSERVE FREEZER: 208-230V/3 PHASE. PROVIDE 10GA. 36" LONG, 3 WIRE W/ GROUND CORD AND NEMA L15-30 PLUG & RECEPTACLE PER BARREL, TYPICALLY (2) CONNECTIONS PER SOFTSERVE FREEZER. SOFTSERVE CONDENSER: POWER HARDWIRED FROM SOFTSERVE FREEZER. PROVIDE WP 10A, 2 POLE DISCONNECT AT EACH CONDENSER.
210	COUNTERTOP MISTY SLUSH FREEZER: E.C. TO PROVIDE TAYLOR (PRIMARY): 115V/1PH. NEMA PLUG & RECEPTACLE AND APPROXIMATELY 6' CORD. STYELTING (ALTERNATE): 115V/1PH. NEMA 5-15 RECEPTACLE. HOODLINE (ALTERNATE): 115V/1PH. NEMA 5-20 PLUG & RECEPTACLE AND APPROXIMATELY 6' CORD.
540	MANITOWOC (PRIMARY) ICE MAKER AND REMOTE CONDENSER: E.C. TO PROVIDE NEMA 5-20 PLUG & RECEPTACLE WITH APPROXIMATELY 4' CORD FOR THE ICE MAKER. E.C. TO PROVIDE 3/4" WATERPROOF DISCONNECT SWITCH FUSED AT 25A ON REMOTE CONDENSER. REFRIGERATION CONTRACTOR TO INSTALL COMMUNICATION WIRE (THERMOSTAT WIRE) WITH INSTALLATION OF THE LINE SETS. COMMUNICATION WIRE IS PART OF LINE SET PACKAGE. FIELD VERIFY ALL REQUIREMENTS BEFORE ROUGH-IN.
542	SCOTSMAN (ALTERNATE) ICE MAKER AND REMOTE CONDENSER: E.C. TO PROVIDE NEMA 6-20 PLUG & RECEPTACLE WITH APPROXIMATELY 4' CORD FOR THE ICE MAKER. E.C. TO PROVIDE 3/4" OR FLEXIBLE SEAL TIGHT CONDUIT WITH 2 #12 WIRES BETWEEN FLUSH MOUNTED WALL JUNCTION BOX AND SERVICE JUNCTION BOX LOCATED ON BACK OF ICE MAKER. E.C. TO PROVIDE 20A/2P WATERPROOF DISCONNECT SWITCH FUSED AT 20A ON REMOTE CONDENSER. FIELD VERIFY ALL REQUIREMENTS BEFORE ROUGH-IN.

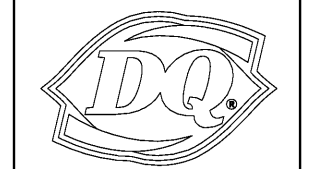
GENERAL NOTES	
1.	ALL EQUIPMENT SHALL BE WIRED TO PANEL AND CIRCUIT NUMBER SHOWN. PROVIDE ELECTRICAL CONDUIT TO PANEL IS PREFERRED. MC CABLE ONLY IF LOCAL CODES ALLOW (TYPICAL UNLESS SHOWN OTHERWISE).
2.	ELECTRICAL CONTRACTOR SHALL PROVIDE ANY ADDITIONAL CONVENIENCE OUTLETS PER TENANT/OWNER, AT TENANT/OWNER'S EXPENSE.
3.	IN ALL KITCHEN AREAS, ALL RECEPTACLES SHALL BE GFCI PER 2017 NEC SECTION 210.8(B)(3).
4.	VERIFY LOCATIONS AND ELECTRICAL REQUIREMENTS OF ALL ROOF TOP EQUIPMENT BEFORE ROUGH-IN AND COORDINATE WORK WITH OTHER TRADES.
5.	PROVIDE WHITE OUTLETS W/ WHITE PLATE IN DINING AREA
6.	PROVIDE WHITE OUTLET W/ S.S. PLATE IN KITCHEN AREA
7.	ALL DIMENSIONS & HEIGHTS ARE TO CENTER OF OUTLET
KEY NOTES	
1.	CASH REGISTER/VIDEO MONITOR SYSTEM: WIRING FOR CASH REGISTER/VIDEO MONITOR SYSTEM SHALL BE IN SEPARATE CONDUIT FROM OTHER SYSTEMS AND SHALL HAVE INSULATED/ISOLATED GROUND CONDUCTORS. RECEPTACLES SHALL BE NEMA 5-20R-15. E.C. SHALL VERIFY WITH OWNER/TENANT ALL WIRING RELATED TO CASH REGISTERS AND VIDEO MONITORS FOR ANY CHANGES OR ADDITIONS BASED ON ACTUAL UNITS USED.
2.	ROOF TOP RECEPTACLES: ELECTRICAL CONTRACTOR TO PROVIDE AND WIRE COMPLETE GFIWP RECEPTACLE AT OR NEAR ROOF TOP EQUIPMENT.
3.	THIS IS A WALL THAT IS NOT FULL HEIGHT. ALL CONDUIT MUST BE ROUTED AROUND THE OPENING OR BE RUN UNDERGROUND.
4.	E.C. TO MAKE FINAL CONNECTION TO COUNT RECEPTACLES AFTER COUNTER INSTALLATION.
5.	EQUIPMENT BENEATH HOODS SHALL HAVE SHUNT TRIP BREAKERS INTERLOCKED WITH FIRE EXTINGUISHING SYSTEM. E.C. TO PROVIDE 120V POWER FOR CONTROLS. SEE PANEL SCHEDULE E4.
6.	E.C. TO PROVIDE AN EMPTY BOX AND 1/2" CONDUIT STUBBED TO ACCESSIBLE CEILING SPACE FOR PHONE SERVICE. COORDINATE ADDITIONAL PHONE SERVICE LOCATIONS PER OWNER'S REQUEST. FINAL TERMINATION OF PHONE JACKS BY COMMUNICATIONS CONTRACTOR.
7.	AT THIS LOCATION, E.C. TO PROVIDE PROPERLY SIZED SERVICES FOR THE FOLLOWING ITEMS: 120V/1PH - COMPUTER; 120V/1PH - MONITOR; 120V/1PH - PRINTER/FAX; 120V/1PH ADDING MACHINE; 120V/1PH - CONVENIENCE OUTLET; 120V/1PH WITH ISOLATED AND INSULATED GROUND FOR POS SYSTEM; JUNCTION BOX(ES) - TELEPHONE/DATA LINES; OPEN JUNCTION BOXES FOR STORE SECURITY SYSTEM; OPEN JUNCTION BOXES FOR STORE MUSIC/PA/SYSTEM.
8.	ANSUL SYSTEM: E.C. TO PROVIDE JUNCTION BOX AND (1) 20A CIRCUIT FOR ANSUL SYSTEM CONNECTION. VERIFY ALL REQUIREMENTS WITH OTHER TRADES BEFORE ROUGH-IN.
9.	SERVICE FOR THE CONDENSING UNIT COMES FROM THE SOFTSERVE FREEZER (J BOX ON BACKSIDE OF THE SOFTSERVE FREEZER. SEE DETAIL 2/E1 & 3/E1). ALSO PROVIDE A 10 AMP, 2 POLE DISCONNECT SWITCH AT THE ROOF MOUNTED CONDENSING UNIT. (1) SO 122 +GROUND WIRE PER BARREL. CLEARLY LABEL EACH LINE WITH UNIT LETTER AND BARREL NUMBER (A1, A2, B1, B2) AT UNIT & AT ROOF.
10.	E.C. TO PROVIDE JUNCTION BOX, TOGGLE SWITCH, RECEPTACLE, AND HEAT TAPE FOR DRAIN LINE. COORDINATE LOCATION WITH PLUMBING CONTRACTOR.
11.	ELECTRICAL CONTRACTOR TO PROVIDE POWER TO KITCHEN FAN CONTROL CENTER. SEE SHEET M4.
12.	ELECTRIC HAND DRYER PROVIDED BY G.C. INSTALLED BY E.C. INSTALL PER MANUFACTURER'S RECOMMENDATIONS.
13.	MENU BOARD OUTLETS TO BE INSTALLED HORIZONTAL
14.	USB RECEPTACLES, LEGRAND PASS & SEYMOUR FED SPEC TAMPER-RESISTANT SINGLE RECEPTACLE WITH USB CHARGING (TR5261USB), 15 AMP/1.25V, NEMA 5-15R, WHITE UNIT WITH WHITE PLATE
15.	PROVIDE RECESSED SERVICE FLOOR BOX (SINGLE GFCI + DATA) WITH GASKETED (WATER PROOF) COVER PER MANUFACTURER'S RECOMMENDATIONS.
16.	WALK-IN LIGHTING PROVIDED BY WALK-IN MFG. INSTALLED BY ELEC. CONTRACTOR, COORD. POWER REOMTS.
17.	WALK-IN DOOR PANEL CONTROLS PROVIDED BY WALK-IN MFG. INSTALLED BY ELEC. CONTRACTOR, COORD. POWER REOMTS.
18.	ELECTRICAL CONTRACTOR REFER TO MFG. WIRING DIAGRAM FOR INFORMATION ON WIRING CONTROLS PROVIDED BY MFG.
19.	HALO-LIT MIRROR: ELECTRICAL CONTRACTOR TO TIE INTO RESTROOM LIGHTING CONTROLS. SEE LIGHTING PLAN.

JAMES E. WILKERSON
A.I.A.
119 East Tallulah Drive
Greenville, S.C. 29605
864-370-2582
864-240-5375 f



FLA REG. PE 62729
JOB NO. 202016

DQ GRILL & CHILL
US HWY 90 (LOT 2)
GLEN ST MARY, FL
32040



AMERICAN DAIRY QUEEN
MINNEAPOLIS, MN U.S.A.

*REGISTERED U.S. PATENT OFFICE.
AMERICAN DAIRY QUEEN CORPORATION.
THIS DRAWING, ITS DESIGN DETAIL AND
INVENTION ARE THE PROPERTY OF
AMERICAN DAIRY QUEEN INC. (ADQ) AND
SHALL NOT BE COPIED IN ANY MANNER
NOR DISCLOSED TO ANY OUTSIDE
PARTY WITHOUT ADQ CONSENT.

BUILDING TYPE:
DAIRY QUEEN GRILL & CHILL
CORE 66
STORE NO. 45961

DRAWN, CHECKED, & APPROVED BY: ADQ
DESIGN ARCHITECTURE-CONSTRUCTION
(DAC) DEPARTMENT

THIS IS "PLAN" NORTH
FOR ACTUAL BUILDING
ORIENTATION REFER TO
SITE PLAN (BY OTHERS)

ISSUE DATE:	10/30/2020
REVISION DATE:	10/30/2020
1	ISSUE FOR CONSTRUCTION
2	
3	
4	
5	

POWER PLAN

SHEET NUMBER:
E1.1