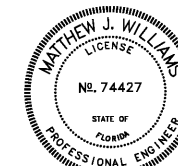


JAMES E. WILKERSON
A.I.A.
119 East Tallulah Drive
Greenville, S.C. 29605
864-370-2582
864-240-5375 f



FLA REG. PE 74427
JOB NO. 202016

DQ GRILL & CHILL
US HWY 90 (LOT 2)
GLEN ST MARY, FL
32040



GRILL & CHILL

AMERICAN DAIRY QUEEN
MINNEAPOLIS, MN U.S.A.

*REGISTERED U.S. PATENT OFFICE.
AMERICAN DAIRY QUEEN CORPORATION.
THIS DRAWING, ITS DESIGN DETAIL AND
INVENTION ARE THE PROPERTY OF
AMERICAN DAIRY QUEEN INC. (ADQ) AND
SHALL NOT BE COPIED IN ANY MANNER
NOR DISCLOSED TO ANY OUTSIDE
PARTY WITHOUT ADQ CONSENT.

BUILDING TYPE:
DAIRY QUEEN GRILL & CHILL
CORE66
STORE NO. 45461

DRAWN, CHECKED, & APPROVED BY: ADQ
DESIGN-ARCHITECTURE-CONSTRUCTION
(DAC) DEPARTMENT

THIS IS "PLAN" NORTH
FOR ACTUAL BUILDING
ORIENTATION REFER TO
SITE PLAN (BY OTHERS)

ISSUE DATE: 10/30/2020

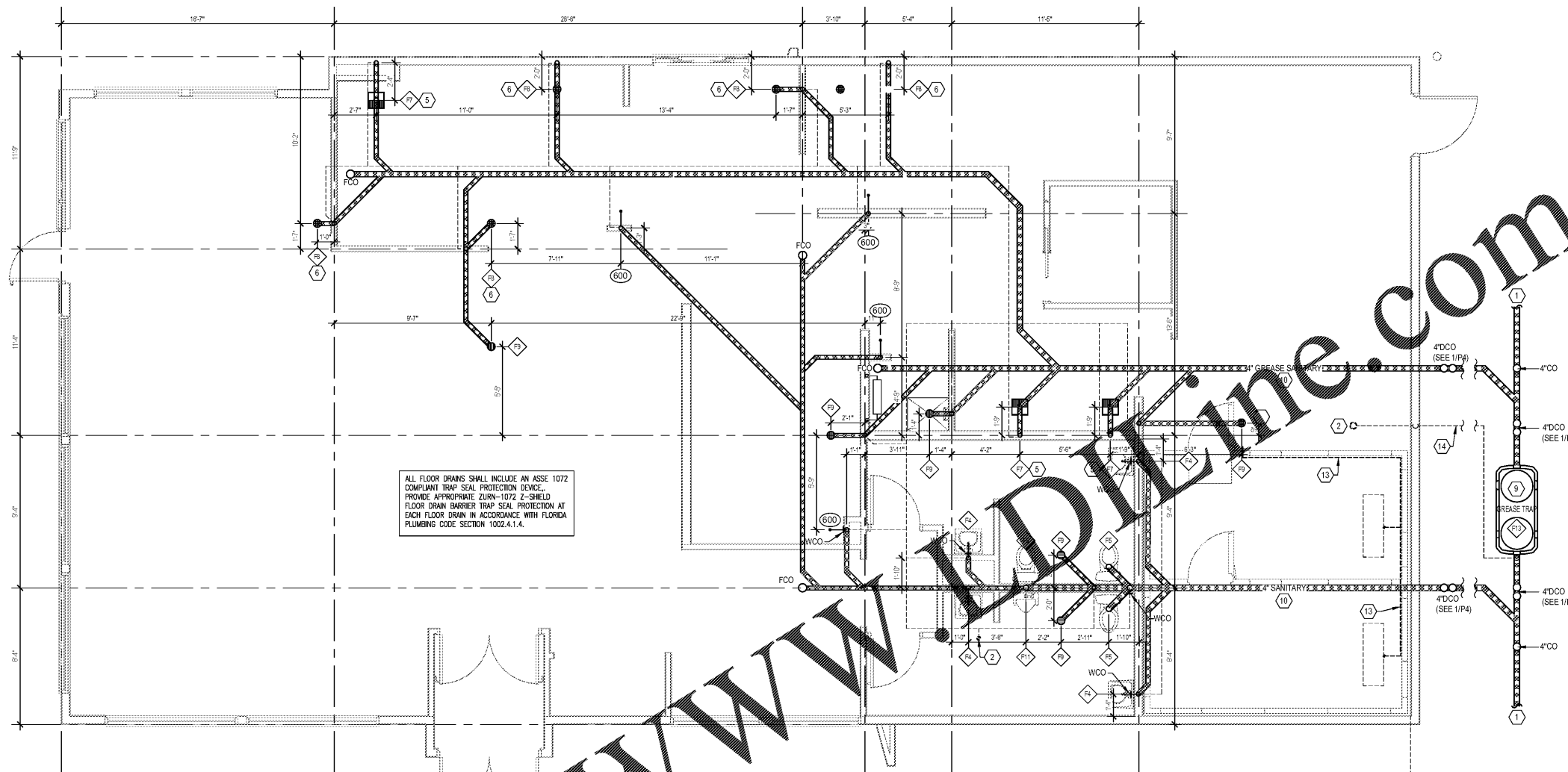
REVISION DATE:
10/30/2020 ISSUE FOR CONSTRUCTION

▲
▲
▲
▲
▲

**PLUMBING
WASTE & VENT
PLAN**

SHEET NUMBER:

P2



ALL FLOOR DRAINS SHALL INCLUDE AN ASSE 1072 COMPLIANT TRAP SEAL PROTECTION DEVICE. PROVIDE APPROPRIATE ZURN-1072 Z-SHIELD FLOOR DRAIN BARRIER TRAP SEAL PROTECTION AT EACH FLOOR DRAIN IN ACCORDANCE WITH FLORIDA PLUMBING CODE SECTION 1002.4.1.4.

THIS PLAN WAS DEVELOPED USING THE 2020 FLORIDA PLUMBING CODE



| PLUMBING SYMBOLS | |
|------------------|-----------------------------|
| SYMBOL | DESCRIPTION |
| | FLOOR DRAIN |
| | FLOOR DRAIN W/ FUNNEL |
| | FLOOR SINK |
| DCO | DOUBLE CLEAN OUT |
| FCO | FLOOR CLEAN OUT |
| WCO | WALL CLEAN OUT |
| VTR | VENT THRU ROOF |
| B.F.P. | BACKFLOW PREVENTER |
| SOV | SHUT OFF VALVE |
| | WASTE, BELOW FLOOR |
| | SYRUP LINES/CHASE, OVERHEAD |
| | VENT |
| | FILTERED WATER |
| | DOMESTIC COLD WATER |
| | DOMESTIC HOT WATER |
| | GAS LINE |

1 PLUMBING WASTE AND VENT PLAN
SCALE: 1/4" = 1'-0"

| FIXTURE SPECIFICATIONS | |
|------------------------|--|
| F1 | WATER METER: BY GENERAL CONTRACTOR LOCALLY. REMOTE DIGITAL READER COORDINATE LOCATION WITH OWNER. SEE DETAIL 6/P4. |
| F2 | WATER HEATER: SEE SCHEDULE ON P4. 1" CW AND 1" 120 HW. PIPING |
| F3 | SERVICE SINK FAUCET: T&S BRASS B-0665-BSTP |
| F4 | WALL MOUNTED LAVATORY WITH CARRIER: SLOAN SS-3003 WHITE 3-HOLE, CODE 3873003 - SENSOR ACTIVATED FAUCET. TOTO T105-D19RCP, CODE 817018. COVER PLATE: TOTO T171V100S, CODE 234306. WITH OPEN GRID STRAINER. STOPS: CHROME PLATED ANGLE STOPS. DRAIN: CHROME PLATED 17 GAUGE METAL P-TRAP MAINTAIN 2" FROM FLOOR TO TOP OF LAV. PROVIDE A.D.A. WRAPS ON DRAIN AND WATER SUPPLY LINES. |
| F5 | WATER CLOSET: TOTO CST705UN#1 (ADA) CST705UN#1 - SENSOR FLUSH VALVE. TOTO TET1UN#1P, CODE S101. CHROME PLATED ANGLE STOP - SEAT. SOLID PLASTIC ELONGATED OPEN FRONT WICHECK HINGE (1.5") |
| F6 | HOSE BIBB: ZURN ECOLOTROL #Z1320-EZ ENCASED, NON-FREEZE, ANTI-SIPHON, AUTOMATIC DRAINING. HOSE BIBB. INSTALLED AT +18" ABOVE FINISH GRADE. |
| F7 | FLOOR SINK: ZURN #FD-2370-PV3 WITH 12" PVC TOP |
| F8 | FLOOR DRAIN W/FUNNEL: ZURN #Z1415-2NL-73 WITH ROLL UP FUNNEL |
| F9 | FLOOR DRAIN: ZURN #Z1415-2NH-5B |
| F10 | REDUCED PRESSURE ZONE BACKFLOW PREVENTER: ZURN #34-375XL, 3/4" FEMALE THREADED BODY NPT CONNECTIONS AND BRONZE STRAINER, LEAD FREE. |
| F11 | WALL MOUNTED URINAL: SLOAN SU-1009-A UNIVERSAL HIGH-EFFICIENCY - SENSOR FLUSH VALVE. TOTO TEU1UN12#C-W 0.125 GPF ECOPOWER (HANDS FREE). INCLUDES 3/4" VACUUM BREAKER AND 3/4" ANGLE STOP SET. |
| F12 | THERMOSTATIC MIXING VALVE FOR RESTROOM FIXTURES: ZURN #12-ZH1017XL |
| F13 | GREASE INTERCEPTOR: SCHIER GB-250 GREASE INTERCEPTOR. VERIFY SIZE WITH LOCAL CODES. |
| FCO | FLOOR CLEANOUT: ZURN #Z1400-4NH |
| WCO | WALL CLEANOUT: ZURN #Z1441 |

| FIXTURE & DRAIN CONNECTION SCHEDULE | | | | | | |
|-------------------------------------|---------------------|--------|------------|-----------|------|--------------------------------------|
| NO. | DESCRIPTION | WASTE | WATER COLD | WATER HOT | GAS | REMARKS |
| F1 | WATER METER | 1 1/2" | | | | SEE DETAIL SHEET P4 |
| F2 | WATER METER | 3/4" | 1" | 1" | 3/4" | SEE DETAIL SHEET P4 |
| F3 | SERVICE SINK FAUCET | | 3/4" | 3/4" | | |
| F4 | LAVATORY | 1 1/2" | 1 1/2" | 1/2" | 1/2" | |
| F5 | WATER CLOSET | 3" | 2" | 1/2" | | |
| F6 | HOSE BIB | | 3/4" | | | |
| F7 | FLOOR SINK | 3" | 2" | | | WITH FUNNEL |
| F8 | FLOOR DRAIN | 3" | 2" | | | |
| F9 | FLOOR DRAIN | 3" | 2" | | | |
| F10 | BACKFLOW PREVENTER | | | | | |
| F11 | URINAL | 2" | 1 1/2" | 3/4" | | OUTPUT AT 110° FOR RESTROOM FIXTURES |
| F12 | MIXING VALVE | | 3/4" | 3/4" | | |
| F13 | GREASE INTERCEPTOR | 4" | 4" | | | |

NOTE:
1. THIS IS A PROTOTYPICAL SCHEDULE. ALL EQUIPMENT PEICES MAY NOT BE USED.
2. ALL FIXTURES PROVIDED AND INSTALLED BY PLUMBING CONTRACTOR.

| EQUIPMENT & DRAIN CONNECTION SCHEDULE | | | | | | |
|---------------------------------------|------------------------------|-----------|--------|------------|-----------|---|
| NO. | DESCRIPTION | WASTE | VENT | WATER COLD | WATER HOT | REMARKS |
| 161 | LOBBY DRINK HEAD W/ICE DISP. | 3/4" ID | | | | INDIRECT DRAIN LINE TO FLOOR DRAIN. B.F.P. AS REQD. BY CODE |
| 310 | DT DRINK HEAD W/ICE BIN | 3/4" ID | | | | INDIRECT DRAIN LINE TO FLOOR DRAIN. B.F.P. AS REQD. BY CODE |
| 511 | CARBONATOR | | | | 1/2" | PROVIDE S.S. DOUBLE CHECK BACKFLOW PROTECTOR |
| 502 | OPT. COFFEE MAKER | | | | 3/8" | PROVIDE FLEX WATER LINE FROM S.O.V. |
| 203 | SOFTSERVE FREEZERS | 1 1/2" ID | | | | AIR COOLER-REMOTE |
| 400 | CHAIN BROILER | | | | 3/4" | 97,000 BTU |
| 403 | 3-VAT FRYERS | | | | 1" | 225,000 BTU |
| 534 | BLAST FREEZER | 3/4" ID | | | | INDIRECT WASTE TO FLOOR DRAIN |
| 540 | ICE MAKER | 3/4" ID | | | | INDIRECT WASTE TO FLOOR DRAIN |
| 541 | ICE BIN | 3/4" ID | | | | INDIRECT WASTE TO FLOOR DRAIN |
| 545 | ICE WATER FILTER | | | | 1/2" | |
| 501 | OPT. HOT WATER DISP. | | | | 1/4" | |
| 600 | HAND SINK | 1 1/2" | 1 1/2" | 1/2" | 1/2" | 1/2" FLEX WATER LINE AT S.O.V. & INDIRECT WASTE TO FLOOR SINK |
| 610 | SCRUB SINK | 2" ID | 1 1/2" | 3/4" | 3/4" | 1/2" FLEX WATER LINE AT S.O.V. & INDIRECT WASTE TO FLOOR SINK |
| 611 | VEGETABLE SINK | 2" ID | 1 1/2" | 3/4" | 3/4" | 1/2" FLEX WATER LINE AT S.O.V. & INDIRECT WASTE TO FLOOR SINK |
| 620 | CORNER SOFTSERVE SCRUB SINK | 2" ID | 1 1/2" | 3/4" | 3/4" | 1/2" FLEX WATER LINE AT S.O.V. & INDIRECT WASTE TO FLOOR SINK |
| 650 | WATER FILTER SYSTEM | | | 3/4" | | SEE DETAIL 7/P4 |
| 670 | TREAT WORK TABLE | 3/4" | | | | INDIRECT DRAIN LINE TO FLOOR SINK |

NOTE:
1. THIS IS A PROTOTYPICAL SCHEDULE. ALL EQUIPMENT PEICES MAY NOT BE USED.
2. EQUIPMENT PROVIDED BY OWNER AND INSTALLED BY PLUMBING CONTRACTOR.

| GENERAL NOTES | |
|---------------|---|
| 1. | ALL FLOOR DRAINS TO BE LEVEL WITH FLOOR, EXCEPT IN THE RESTROOMS. |
| 2. | REFER TO PLUMBING NOTES ON SHEET P1 |
| 3. | HORIZONTAL DRAINAGE PIPING MUST BE INSTALLED WITH A UNIFORM SLOPE OF 1/4" PER FOOT. WHERE MUNICIPAL SEWER DEPTH, STRUCTURAL FEATURES, OR BUILDING ARRANGEMENT PRECLUDE THIS SLOPE, A MINIMUM SLOPE OF 1/8" INCH PER FOOT MAY BE UTILIZED FOR PIPING 4 INCHES AND LARGER IF APPROVED BY THE AHJ. |
| 4. | PVC SANITARY SEWERS MUST MEET ASTM DL 785, D2965, D3034, F789, F794, F811, F849, OR F1488 WITH APPROVED FITTINGS (SEE TABLE 701.1 AND INSTALLATION STANDARD 1). ONLY ASTM DL 785, D2965, F891, OR F1488 PVC MAY CROSS ABOVE OR LESS THAN 12 INCHES BELOW POTABLE WATER LINES (SEE SECTION 720.1). SOLVENT WELDED JOINTS MUST USE ASTM F656 PURPLE PRIMER AND ASTM D2564 CEMENT. THE SEWER MUST BE INSTALLED BY OPEN-TRENCH ON A CONTINUOUS GRANULAR BED PER ASTM D2321. |
| 5. | THE PIPE MATERIAL TO BE USED FOR THE DRAIN WASTE AND VENT SYSTEM MUST COMPLY WITH MINNESOTA RULES, CHAPTER 4714, SECTION 701.0. |

| KEY NOTES | |
|-----------|--|
| 1 | CONNECT 4" WASTE LINE TO MAIN. COORDINATE LOCATION WITH CIVIL. |
| 2 | EXTEND VENT THRU ROOF. MAINTAIN 10'-0" FROM ALL O.A. INTAKES. |
| 3 | WALLS NOT TO CEILING. NO FULL HEIGHT VERTICAL PIPING ALLOWED. |
| 4 | ROUTE DRAIN FROM BACKFLOW PREVENTER TO SERVICE SINK. |
| 5 | INDIRECT DRAIN LINE TO FLOOR SINK. |
| 6 | INDIRECT DRAIN LINE TO FLOOR DRAIN. |
| 7 | WATER HEATER PTR VALVE DRAIN LINE TO SERVICE SINK. |
| 8 | GREASE TRAP. SEE DETAIL 9/P4. VERIFY REQUIREMENTS WITH LOCAL CODES. |
| 9 | DRINK LINES (SYRUP, FILTERED WATER & CO2 BUNDLE) OVERHEAD FROM LOCATIONS SHOWN. LINES REQUIRE SWEEPING AND MINIMAL BENDS. WHEN PENETRATING METAL FRAMING, GROMMETS MUST BE USED TO PROTECT LINES FROM DAMAGE. LOCATIONS SHOWN ARE ILLUSTRATIVE. CHASES SHOULD BE CONFIGURED AS DIRECT AND WITH AS FEW BENDS AS POSSIBLE. INSULATION MAY BE REQUIRED. VERIFY WITH VENDOR. DRINKS LINES SURFACE MOUNTED TO FACE OF WALL, S.S. COVER PROVIDED BY VENDOR. |
| 10 | GREASE TRAP. SEE DETAIL 9/P4. VERIFY REQUIREMENTS WITH LOCAL CODES. |
| 11 | MAINTAIN CLEARANCE REQD BY CODE BETWEEN SANITARY SEWER AND WATER LINE UNDERGROUND. |
| 12 | DRINK LINES (SYRUP, MISTY SYRUP, FILTERED WATER, & CO2 BUNDLE) OVERHEAD FROM LOCATIONS SHOWN. LINES REQUIRE SWEEPING AND MINIMAL BENDS. WHEN PENETRATING METAL FRAMING, GROMMETS MUST BE USED TO PROTECT LINES FROM DAMAGE. LOCATIONS SHOWN ARE ILLUSTRATIVE. CHASES SHOULD BE CONFIGURED AS DIRECT AND WITH AS FEW BENDS AS POSSIBLE. INSULATION MAY BE REQUIRED. VERIFY WITH VENDOR. G.C. TO PROVIDE 2" PVC CHASE INSIDE WALL TO 48" AFF BEHIND MISTY MACHINE. |
| 13 | CONDENSATE DRAIN LINE (1/2" COPPER). MOUNT TIGHT TO WALL AND SLOPE TO DRAIN. DRAIN LINE MUST BE WRAPPED WITH A HEAT TAPE AND INSULATED WITHIN THE WALK-IN FREEZER. |
| 14 | VENT PIPING BELOW GRADE |