



\*REGISTERED U.S. PATENT OFFICE.  
AMERICAN DAIRY QUEEN CORPORATION.  
THIS DRAWING, ITS DESIGN DETAIL AND  
INVENTION ARE THE PROPERTY OF  
AMERICAN DAIRY QUEEN INC. (ADQ) AND  
SHALL NOT BE COPIED IN ANY MANNER  
NOR DISCLOSED TO ANY OUTSIDE  
PARTY WITHOUT ADQ CONSENT.

**BUILDING TYPE:**  
DAIRY QUEEN GRILL & CHILL  
**CORE66**  
**STORE No. 45461**

DRAWN, CHECKED, & APPROVED BY: ADQ  
DESIGN-ARCHITECTURE-CONSTRUCTION  
(DAC) DEPARTMENT

THIS IS "PLAN" NORTH  
FOR ACTUAL BUILDING  
ORIENTATION REFER TO  
SITE PLAN (BY OTHERS)

ISSUE DATE: 11/06/2020

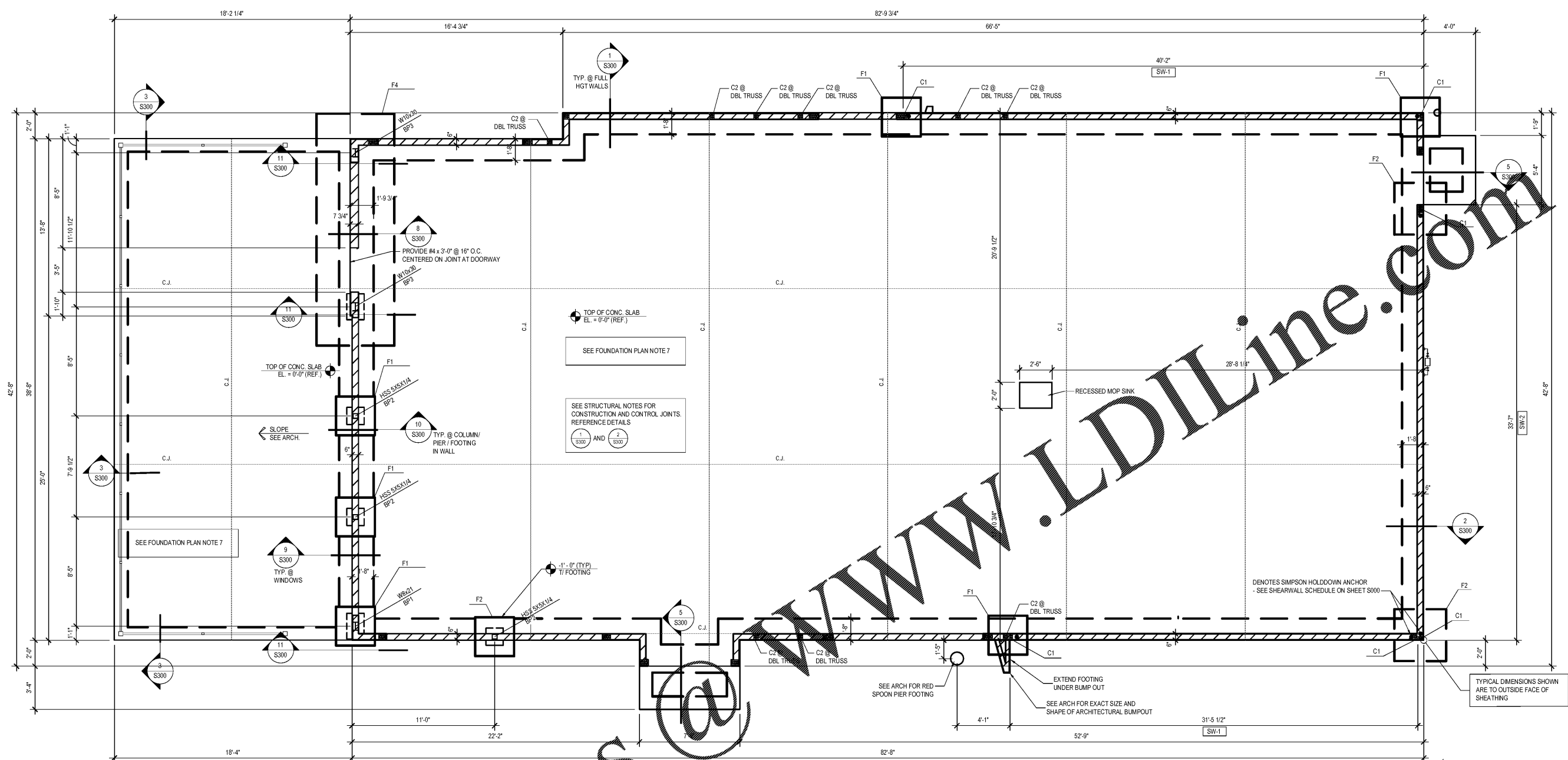
REVISION DATE: 11/06/2020

ISSUE FOR CONSTRUCTION

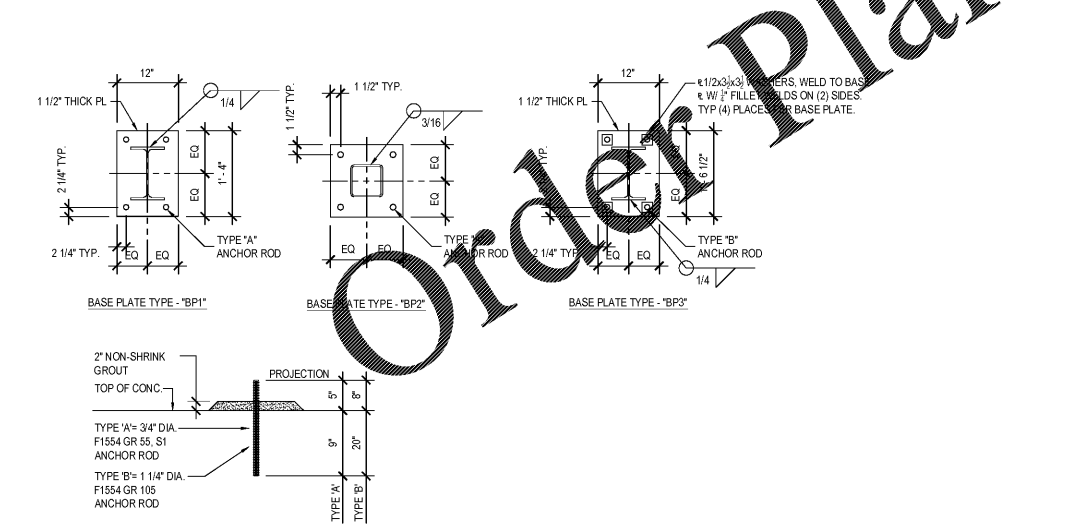
▲
▲
▲
▲
▲

**FOUNDATION PLAN**

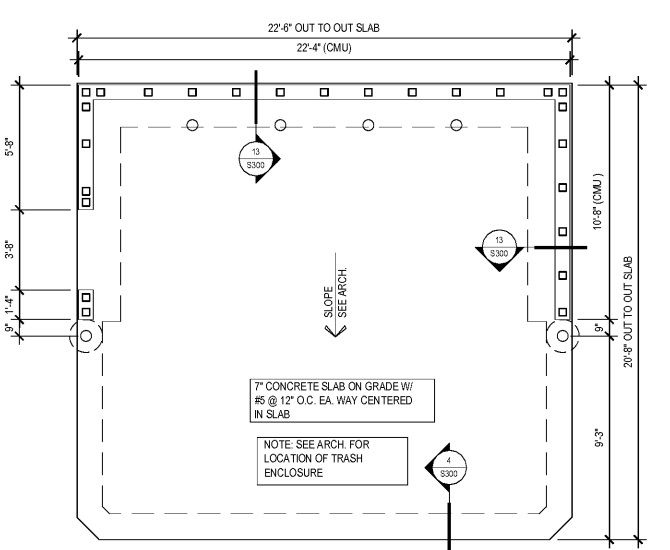
SHEET NUMBER:  
**S100**



**1 FOUNDATION PLAN**  
S100 SCALE: 1/4" = 1'-0"



**2 TYP. BASE PLATE & ANCHOR ROD DETAILS**  
S100



**3 TRASH ENCLOSURE FOUNDATION PLAN**  
S100 1/4" = 1'-0"

MARK	SIZE	REINFORCING BOTTOM U.N.O.
F1	3'-0" x 3'-0" x 1'-4"	(3) #5 BARS EACH WAY - T&B
F2	4'-0" x 4'-0" x 1'-4"	(4) #5 BARS EACH WAY - T&B
F3	5'-0" x 5'-0" x 1'-4"	(5) #5 BARS EACH WAY
F4	18'-0" x 5'-0" x 2'-4"	#5 @ 12" O.C. EA. WAY - T&B

MARK	SIZE	BASE PLATE	ANCHOR ROD TYPE
HSS5X5X1/4	HSS5 x 5 x 1/4	3/4" x 11" x 11"	A
W8 x 21	W8 x 21	1 1/2" x 12" x 16"	A
W10 x 30	W10 x 30	1 1/2" x 12" x 18 1/2"	B

1. BPE (BOTTOM OF BASE PLATE ELEVATION) = -0' - 10"  
2. WELD CAP PLATES ON COLUMNS W/ 1/4" FILLET ALL AROUND, U.N.O.  
3. ALL COLUMNS ARE CONTINUOUS TO FOOTING U.N.O.

- FOUNDATION PLAN NOTES:**
- SEE SHEET S000 FOR STRUCTURAL NOTES.
  - TOP OF FOOTING ELEVATION = -1'-0" TYPICAL, UNLESS NOTED OTHERWISE.
  - ALL COLUMN FOOTINGS ARE CENTERED ON COLUMNS.
  - STEP FOOTINGS AS REQUIRED TO OBTAIN PROPER BEARINGS, OR TO CLEAR OBSTRUCTIONS OR INTERFERENCE. REFER TO DETAIL B/S300 FOR STEPPED FOOTING.
  - WHERE MECHANICAL PIPE PENETRATES FOOTING, VERIFY SIZE AND LOCATION WITH MECHANICAL. SEE DETAIL T/S300.
  - FOR TYPICAL FOOTING CORNER BAR DETAIL, SEE A/S300.
  - PROVIDE 4" SLAB ON GRADE REINFORCE WITH 6#-W1 4#-W1 4#-W1 PROVIDE 10 MIL VAPOR BARRIER BENEATH SLAB OVER 4" CRUSHED STONE OVER APPROVED SUBGRADE.
  - MARK THIS: "C.J." INDICATES CONTROL JOINTS. FOR TYPICAL CONSTRUCTION CONTROL JOINTS, SEE DETAILS I/S300. CENTER UNDER PARTITIONS WHERE POSSIBLE.
  - FOR SLAB ON GRADE RECESSES, SLOPES, FLOOR DRAINS, AND SLAB FINISHES, SEE ARCHITECTURAL DRAWINGS.
  - MARK THIS: "C1" INDICATES WOOD COLUMN MARK, SEE SCHEDULE ON SHEET S000.
  - ALL DIMENSIONS ARE TO OUTSIDE FACE OF STUD, UNLESS NOTED OTHERWISE.
  - VERIFY ALL DIMENSIONS WITH ARCHITECTURAL DRAWINGS.
  - SPECIAL CARE SHOULD BE TAKEN TO ENSURE THAT DE-WATERING AND SITE PREPARATION PROCEDURES SPECIFIED IN THE GEOTECHNICAL REPORT FOR THE SITE ARE ACCOMPLISHED.
  - REFER TO S/S100 FOR TRASH ENCLOSURE PLAN.
  - PROVIDE (2) #3x2'-6" LONG IN TOP OF SLAB, TYPICAL AT ALL RE-ENTRANT CORNERS AND AT ENDS OF CONTROL JOINTS THAT DO NOT TERMINATE AT EDGE OF SLAB.
  - MARK THIS: "SW-1" INDICATES SHEAR WALL LOCATION, REFER TO SHEAR WALL SCHEDULE ON SHEET S000 FOR WALL CONSTRUCTION REQUIREMENTS.
  - MARK THIS: "BP-1" INDICATES BASE PLATE TYPE. REFER TO DETAIL 2/S100 FOR BASE PLATE AND ANCHOR ROD INFORMATION.