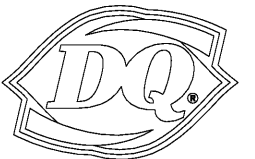


**JAMES E. WILKERSON**  
A.I.A.  
119 East Tallulah Drive  
Greenville, S.C. 29605  
864-370-2582  
864-240-5375 f

FLA REG. AR0015603  
JOB NO. 202016

DQ GRILL & CHILL  
US HWY 90 (LOT 2)  
GLEN ST MARY, FL  
32040



**GRILL & CHILL**

AMERICAN DAIRY QUEEN  
MINNEAPOLIS, MN U.S.A.

\*REGISTERED U.S. PATENT OFFICE.  
AMERICAN DAIRY QUEEN CORPORATION.  
THIS DRAWING, ITS DESIGN DETAIL AND  
INVENTION ARE THE PROPERTY OF  
AMERICAN DAIRY QUEEN INC. (ADQ) AND  
SHALL NOT BE COPIED IN ANY MANNER  
NOR DISCLOSED TO ANY OUTSIDE  
PARTY WITHOUT ADQ CONSENT.

**BUILDING TYPE:**  
DAIRY QUEEN GRILL & CHILL  
CORE66  
STORE NO. 45961

DRAWN, CHECKED, & APPROVED BY: ADQ  
DESIGN-ARCHITECTURE-CONSTRUCTION  
(DAC) DEPARTMENT

THIS IS "PLAN" NORTH  
FOR ACTUAL BUILDING  
ORIENTATION REFER TO  
SITE PLAN (BY OTHERS)

ISSUE DATE: 10/30/2020

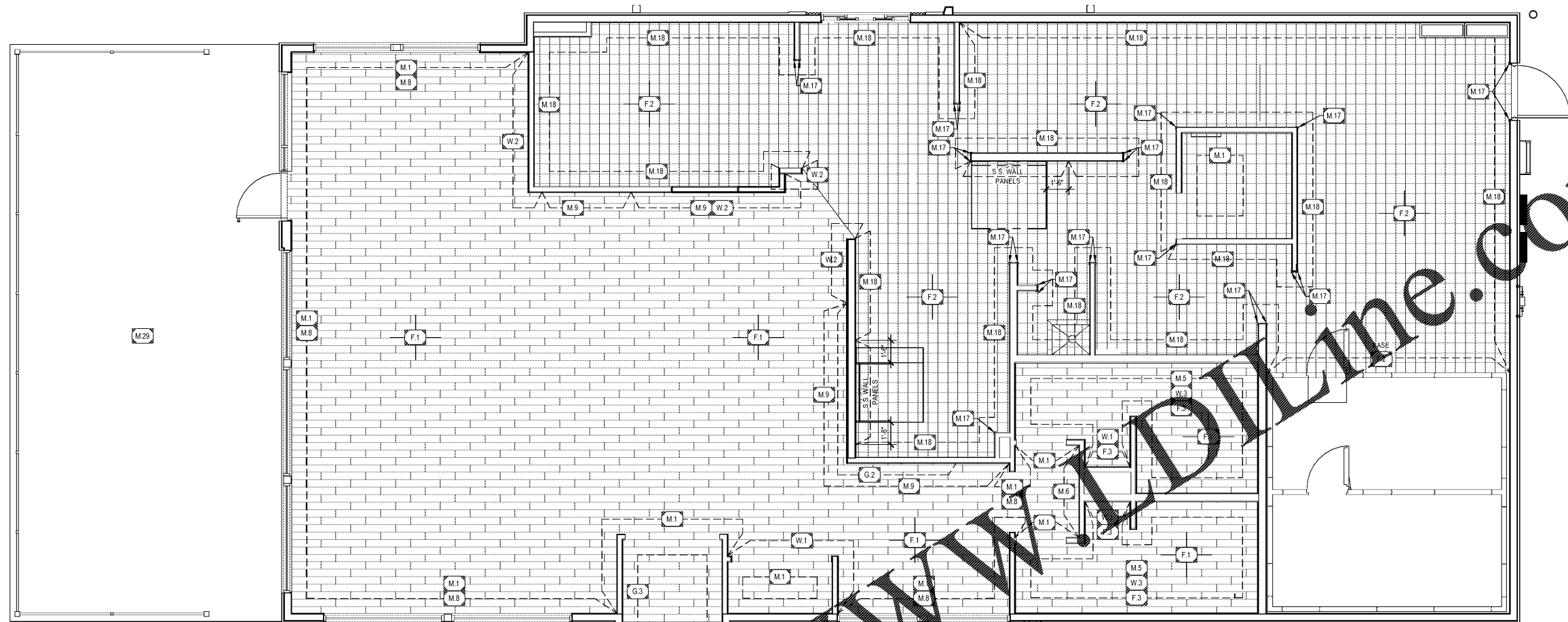
REVISION DATE:  
10/30/2020

ISSUE FOR CONSTRUCTION  
▲  
▲  
▲  
▲  
▲

**FINISH PLAN &  
SCHEDULE**

SHEET NUMBER:

**A5.3**



WWW.DLINE.COM

**1 FINISH PLAN**  
A5.3 SCALE: 1/4" = 1'-0"

FINISH SCHEDULE: (GRILL & CHILL)		NOTE: THIS IS A PROTOTYPICAL SCHEDULE. ALL FINISHES MAY NOT BE USED.	
<b>F.1</b> DINING & RESTROOM FLOOR TILE: MFR: MILES STONE SERIES: MOOD WOOD COLOR: HONEY SIZE: 6"x8" 1/3 OFFSET/STAGGERED PATTERN VENDOR: HJC GROUT: LATICRETE W/ SPECTRALOCK, 1/8" JOINT GROUT COLOR: DUSTY GREY #90	<b>G.1</b> VESTIBULE GRAPHIC WALL COVERING: MFR: JOLIET PATTERN SERIES: COMMERCIAL GRADE TYPE II-J COLOR: RED WITH GOLD ICON WAVE (WVP-RWIG) SIZE: 50" WIDTH BOLT NOTE: USED ONLY IN CORE66 PROTOTYPE	<b>M.1</b> PAINT: (LIGHT) MFR: BENJAMIN MOORE COLOR: SILVER CHAIN #1472 PRODUCT: ULTRA SPEC SCUFF-X INTERIOR LATEX MATTE 0484 PRIMER: ULTRA SPEC 500 INTERIOR LATEX PRIMER 534	<b>M.2</b> COUNTER TOP AND SILL SOLID SURFACE: MFR: CORIAN SOLID SURFACE SIZE: 12" THICK COLOR: CIRRHUS WHITE (MATTE FINISH)
<b>F.2</b> KITCHEN FLOOR TILE: MFR: METROPOLITAN CERAMICS SERIES: QUARRY BASICS COLOR: PURITAN GRAY #507 SIZE: 8"x8" W/ MATCHING 6"x8" COVE BASE TRIMS AT MOP SINK, BULLNOSE & FLAT TOP COVE TRIMS VENDOR: HJC GROUT: LATICRETE SPECTRALOCK 2000 IS, 1/2" JOINT GROUT COLOR: DUSTY GREY #90	<b>G.2</b> GOLD ICON WAVE: MFR: JOLIET PATTERN SERIES: INSET AT LOBBY WALL PANELING COLOR: GREY WITH RED SPARKLES (WWP) SIZE: 50" WIDTH BOLT x L.F. AS REQUIRED NOTES: INSTALL HORIZONTAL, DO NOT PATTERN MATCH	<b>M.4</b> PAINT: MFR: BENJAMIN MOORE COLOR: HONEY BERRY #2171 PRODUCT: ULTRA SPEC SCUFF-X INTERIOR LATEX MATTE 0484 PRIMER: ULTRA SPEC 500 INTERIOR LATEX PRIMER 534	<b>M.13</b> FRONT CABINET FACE LAMINATE: MFR: FORMICA COLOR: BRONZETONED CRAFT M6483
<b>F.3</b> RESTROOM FLOOR BASE COVED TRANSITION TRIM: MFR: SCHLUTER SYSTEMS SERIES: DILEX-AHK MODEL: AHK 1S 125 AE MATL: SATIN ANODIZED ALUMINUM, 8'-2 1/2" LENGTHS VENDOR: HJC NOTE: PROVIDE ASSOCIATED ACCESSORIES - INSIDE CORNER: 190AHK ISAE - OUTSIDE CORNER: E1AHK ISAE - CONNECTOR: VIAHK	<b>G.3</b> VESTIBULE GRAPHIC WALL COVERING, ALTERNATE "G.1" MFR: JOLIET PATTERN SERIES: COMMERCIAL GRADE TYPE II-J COLOR: RED WITH RED ICONS (18WP-FR OR 27WP-FR) SIZE: 50" WIDTH BOLT x 18" OR 27" LENGTH, 27.72" REPEAT NOTE: PROVIDE PROTECTION AT CORNER CORNERS WITH BRUSHED ALUMINUM GUARDS FULL HEIGHT.	<b>M.5</b> RESTROOM CEILING SOFFIT: MFR: BENJAMIN MOORE COLOR: ARMIN WHITE #2112-70 PRODUCT: ULTRA SPEC SCUFF-X INTERIOR LATEX MATTE 0484 PRIMER: ULTRA SPEC 500 INTERIOR LATEX PRIMER 534	<b>M.14</b> DRINK CABINET FACE LAMINATE: MFR: FORMICA COLOR: CITADEL 1097-58
	<b>G.4</b> GRAPHIC WALL COVERING, ALTERNATE "M.1" MFR: JOLIET PATTERN SERIES: COMMERCIAL GRADE TYPE II-J COLOR: GREY WITH GREY ICONS (18WP-FR OR 27WP-FR) SIZE: 50" WIDTH BOLT x 18" OR 27" LENGTH, 27.72" REPEAT NOTE: PROVIDE PROTECTION AT CORNER CORNERS WITH BRUSHED ALUMINUM GUARDS FULL HEIGHT.	<b>M.6</b> ACCENT WALL: MFR: BENJAMIN MOORE COLOR: BIG COUNTRY BLUE 2066-30 PRODUCT: ULTRA SPEC SCUFF-X INTERIOR LATEX MATTE 0484 PRIMER: ULTRA SPEC 500 INTERIOR LATEX PRIMER 534	<b>M.16</b> TOILET PARTITION: MFR: BRADLEY STYLE: FLOOR-TO-CEILING MATERIAL: POWDER COATED STEEL OR STAINLESS STEEL COLOR: WARM GREY 0412 OR BRUSHED STAINLESS STEEL VENDOR: HJC
		<b>M.8</b> DOOR MILLWORK & WAINSCOT LAMINATE: COLOR: PLATINUM 902-58 DINING WAINSCOT: HARDSTOP PANELS, CLEAR ANODIZED TRIMS, & COLOR SIL SEALANT VENDOR: HARDSTOP AVAILABLE THROUGH HJC	<b>M.17</b> CORNER GUARD: MFR: CONSTRUCTION SPECIALTIES SERIES: ACRYLYN SURFACE MOUNTED MODEL: #SSM204F949 COLOR: WHITE #949 SIZE: 2'x2'x48"long
		<b>M.9</b> LOBBY WALL PANELS: MFR: MARLITE SERIES: SIEVA COLOR: ARBORITE INUK SHUK GREY P344RM SIZE: 48"x120"x7/16" PANELS VENDOR: HJC	<b>M.18</b> FRP: MFR: SEQUENTIA COLOR: WHITE FINISH: PEBBLED VENDOR: HJC NOTE: PROVIDE ALL MATCHING TRIM PIECES. INSTALL PER MANUFACTURERS REQUIREMENTS.
		<b>M.10</b> LOBBY WALL PANEL TRIMS: MFR: FRY REGLET SERIES: 1/2" MILLWORK TRIMS WITH RETURN KEYS FINISH: CLEAR SATIN ANODIZED ALUMINUM VENDOR: HJC NOTE: - 1" CHANNEL, MWCF5050 - CHANNEL, MWCS050 - OUTSIDE CORNER, MWCCSC50 - INSIDE CORNER, MWICSC50 - 1" ANGLE, MWCL5050	<b>M.19</b> PREFINISHED METAL LIGHT COVE: MFR: FIRESTONE UNA-CLAD COLOR: BONE WHITE FINISH: KYNAF 500 NOTE: SEE REFLECTED CEILING PLAN
			<b>M.24</b> DINING CEILING TILE GRID: MFR: ARMSTRONG SERIES: CIRRHUS MEDIUM TEXTURE SIZE: 24"x24"x3/4" ANGLED TEGULAR COLOR: GREY STONE GRID: PRELUDE XL 15/16" EXPOSED TEE VENDOR: HJC NOTE: PAINT CEILING DIFFUSERS: BENJAMIN MOORE WILLOW CREEK #1468
			<b>M.25</b> DINING CEILING PERIMETER SOFFIT: MFR: ARMSTRONG SERIES: ULTIMA, FINE TEXTURE SIZE: 24"x24"x3/4" BEVELED TEGULAR 15/16" COLOR: WHITE GRID: PRELUDE XL 15/16" EXPOSED TEE GRID COLOR: WHITE VENDOR: HJC
			<b>M.26</b> KITCHEN CEILING TILE GRID: MFR: ARMSTRONG SERIES: VINYLCLAD SIZE: 24"x48"x1/2" SQUARE EDGE COLOR: WHITE GRID: PRELUDE 15/16" EXPOSED TEE GRID COLOR: WHITE VENDOR: HJC
			<b>M.27</b> INTEGRAL CONCRETE COLOR: (PATIO) MFR: INCRETE SYSTEMS, INC PRODUCT: INTEGRAL COLOR COLOR: 50% SUN BUFF, 50% SAND BUFF CONTACT: 800-752-4626
			<b>W.1</b> CAKE ENCLOSURE WALL TILE: MFR: MOJO SERIES: SLASH COLOR: WHITE, SL5H 73W ACCENT: WHITE SL5H 73W - 33% RANDOM INSTALL SIZE: 3"x12" STACKED GRID PATTERN GROUT: LATICRETE PERMACOLOR, 1/8" JOINT GROUT COLOR: SMOKE GREY #99 VENDOR: HJC
			<b>W.2</b> KITCHEN WALL TILE: MFR: KATELO TILE & STONE SERIES: CD MODULAR COLOR: ARCTIC WHITE (KB CD ARW 1020 BR) SIZE: 10"x20" STACKED PATTERN GROUT: LATICRETE PERMACOLOR, 1/8" JOINT GROUT COLOR: SMOKE GREY #99 VENDOR: HJC
			<b>W.3</b> RESTROOM WALL TILE: MFR: PANARIA SERIES: CONNECT COLOR: SOSPIRI NATURAL SIZE: 12"x24" STACKED PATTERN GROUT: LATICRETE PERMACOLOR, 1/4" JOINT GROUT COLOR: SMOKE GREY #99 VENDOR: HJC
			<b>W.4</b> DINING WALL BASE TILE: MFR: OLYMPIA TILE, INC. SERIES: SANDS EXPERIENCE COLOR: MATTE GREY SIZE: 6"x24" (CUT FROM 12x24) GROUT: LATICRETE PERMACOLOR, 1/4" JOINT GROUT COLOR: DUSTY GREY #90 VENDOR: HJC
			<b>W.6</b> TILE ACCESSORIES: MFR: SCHLUTER SYSTEMS STYLE: QUADREC COLOR: SATIN ANODIZED ALUM. (AE) SIZE: AS REQUIRED BY LOCATION & TILE THICKNESS VENDOR: HJC NOTE: PROVIDE ASSOCIATED ACCESSORIES - END CAP, OUTSIDE/INSIDE CORNER - EVI - CONNECTOR - VIRO

**FINISH NOTES:**

1. THESE DRAWINGS ARE TO BE READ IN CONJUNCTION WITH THE SPECIFICATION MANUAL, THE MECHANICAL AND ELECTRICAL DRAWINGS ALONG WITH THEIR SPECIFICATIONS.
2. FIELD VERIFICATION IS REQUIRED FOR QUANTITIES OF ALL MATERIALS PRIOR TO ORDERING AND INSTALLING. THIS INCLUDES FLOOR & WALL TILES, VINYL WOOD FLOORING AND PAINT (DO NOT SCALE DRAWINGS).
3. CONTRACTOR TO PHYSICALLY RE-CHECK ALL MEASUREMENTS PROVIDED IN THE DRAWINGS.
4. UPON AWARD OF CONTRACT CONTRACTOR TO ORDER FINISH MATERIALS & CONFIRM DELIVERY DATE OF ORDER.
5. ALL MATERIALS LISTED TO BE AS SPECIFIED OR AN APPROVED ALTERNATE, ANY PROPOSED ALTERNATES MUST BE SUBMITTED TO THE DG ARCHONIST, DEPT. FOR REVIEW PRIOR TO ORDERING.
6. ALL MATERIALS LISTED TO BE SUPPLIED AND INSTALLED BY THE GENERAL CONTRACTOR, UNLESS OTHERWISE NOTED.
7. ENSURE SUB FLOOR IS PROPERLY PREPARED FOR INSTALLATION OF SPECIFIED FLOOR FINISH.
8. ALL FLOORING MATERIAL TO HAVE MANUFACTURERS RECOMMENDED FINISH APPLIED AFTER INSTALLATION AND PROPER CARE AND MAINTENANCE INSTRUCTIONS TO BE ISSUED TO THE CLIENT.
9. ALL FLOOR FINISHES TO BE INSTALLED AFTER ALL WALLS AND KNEE WALLS HAVE BEEN CONSTRUCTED.
10. FLOOR FINISH TO EXTEND COMPLETELY UNDER MILLWORK.
11. WHEN A CHANGE IN FLOOR FINISH OCCURS AT DOORWAY, THE SEAM IS TO BE CENTERED UNDER THE DOOR IN THE CLOSED POSITION, UNLESS OTHERWISE INDICATED.
12. ALL FLOOR FINISHES TO BE PROTECTED FROM DAMAGE BY TRADES AFTER INSTALLATION, ANY DAMAGE TO BE REPAIRED AT NO COST TO THE OWNER.
13. ALL DOOR FRAMES AND BASE MUST BE PROTECTED WITH APPROPRIATE MATERIAL TO AVOID DAMAGE DURING INSTALLATION OF FLOORING MATERIALS. THE PROTECTION MATERIALS AND METHOD OF ADHESION SHOULD NOT DAMAGE THE FINISH WHEN REMOVED. DAMAGE DONE TO COMPLETED WORK TO BE REPAIRED AT NO COST TO THE OWNER.
14. CONTRACTOR TO PREPARE A PROOF OF SIGNIFICANT SIZE LEFTOVERS WHICH WILL REMAIN ON SITE FOR FUTURE REPAIRS AND PATCHING. CONFIRM QUANTITY WITH CLIENT, 10% COVERAGE IS STANDARD.
15. USE "MIL" GREY THINSET FOR ALL FLOOR & WALL TILE UNLESS NOTED OTHERWISE.
16. USE "MIL" GREY THINSET BY LATICRETE FOR ALL FLOOR & WALL TILE UNLESS NOTED OTHERWISE.
17. USE "CLASS TILE ADHESIVE" BY LATICRETE FOR ALL GLASS TILE. ENSURE FULL COVERAGE WITH NO TROWEL MARKS.
18. PROVIDE "HYDROBAN" BY LATICRETE FOR CRACK ISOLATION AS NEEDED.
19. PROVIDE "LATAS L" 100% SILICONE SEALANT BY LATICRETE AT CHANGE IN PLANE AS NEEDED.
20. ANY KILN RELEASE RESIDUE MUST BE CLEANED OFF TILE BEFORE SETTING.