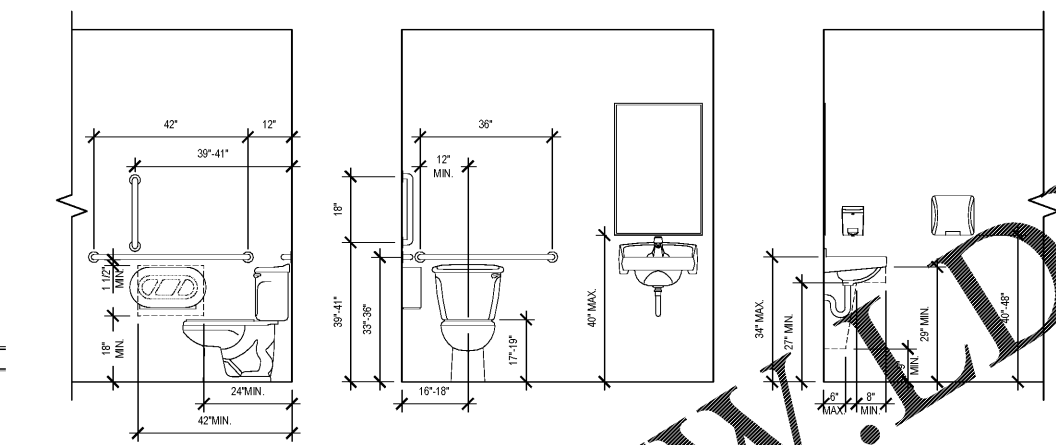
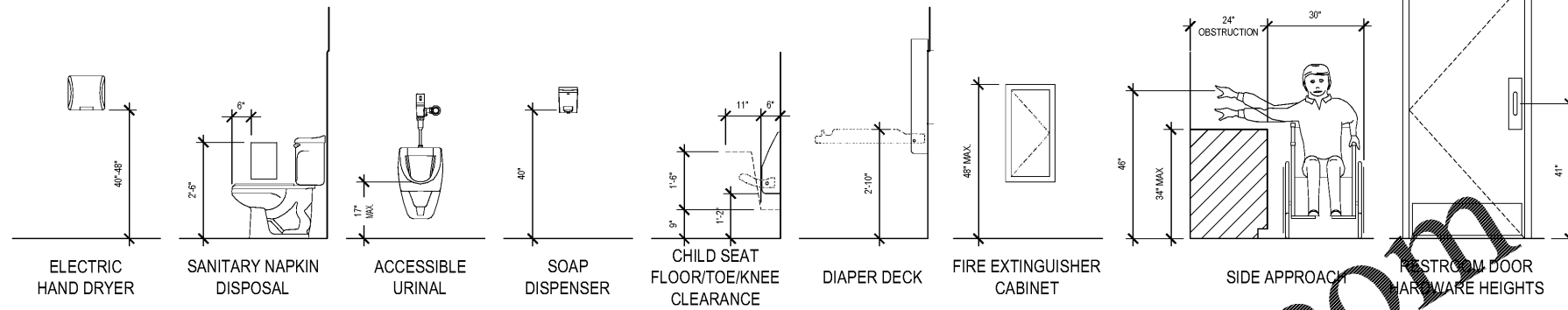


1 RESTROOM FLOOR PLAN

A5.2 SCALE: 1/2" = 1'-0"

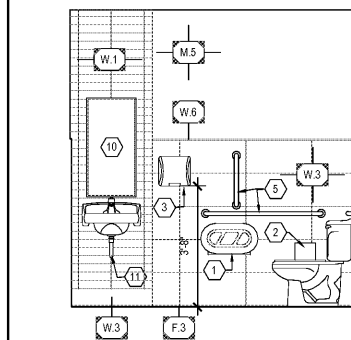


2 ACCESSIBLE MOUNTING HEIGHTS & CLEARANCES

A5.2 SCALE: 1/2" = 1'-0"

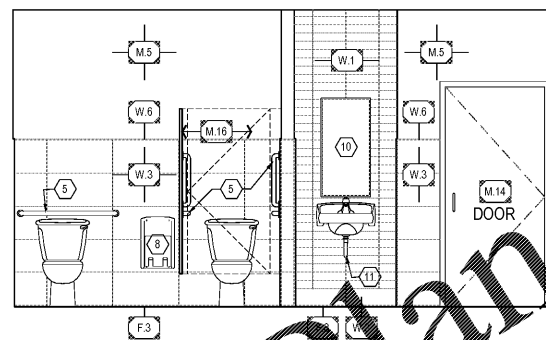
TOILET ACCESSORY SCHEDULE:			
1	TOILET PAPER DISPENSER	BOBRICK	[A] [B] B-265
2	SANITARY NAPKIN RECEPTACLE	BOBRICK	[A] [B] B-265
3	ELECTRIC HAND DRYER	WORLD	[B] SLIMMI L-973
4	SOAP DISPENSER	BY OWING	THRU LOCAL SUPPLIER
5	GRAB BARS	[A] [B]	B-6806
6	GRAB BAR ANCHORS	BOBRICK	[A] [B] 252-30
7	DIAPER DECK (MOUNT TO FIX AT 3'-0" F.F.)	FOUNDATIONS	[A] [B] 100-EV LIGHT GRAY
8	CHILD SEAT (MOUNT 8" TO 14" A.F.F.)	FOUNDATIONS	[A] [B] 103-BQS LIGHT GRAY
9	TOILET PAPER HOOK (MOUNT AT 4'-0" F.F.)	BOBRICK	[A] [B] B-78827
10	BACKLIT WALL MIRROR	MEEK MIRROR	[A] [B] SEE LIGHTING SCHEDULE
11	ADA COMPLIANT DRAIN AND SUPPLY COVERS	MAINLINE	[A] [B] ML102EZ

- (A) RECOMMENDED MANUFACTURER & MODEL
(B) PROVIDED AND INSTALLED BY G.C., AVAILABLE FROM H/C
- GENERAL NOTES:
1. LAVATORY AND WATER CLOSETS TO BE LEVER TYPE CONTROL.
2. GRAB BAR AND SEAT SHALL WITHSTAND A LOAD OF NOT LESS THAN 250 POUNDS APPLIED AT ANY POINT. PROVIDE BLOCKING AS REQUIRED.
3. PROVIDE 1/2" CLEARANCE BETWEEN GRAB BAR AND WALL.
4. HOT WATER AND DRAIN PIPES UNDER LAVATORY SHALL BE INSULATED OR OTHERWISE CONFIGURED TO PROTECT AGAINST CONTACT.
5. PROVIDE SMOOTH, HARD, NON-ABSORBANT SURFACE ON FLOORS & WALLS WITHIN 24" OF URINAL AND WATERCLOSET & EXTENDING MIN. 48" UP WALL.
6. SOAP DISPENSERS ARE SUPPLIED BY FRANCHISEE AND INSTALLED BY THE GENERAL CONTRACTOR.
7. PROVIDE BLOCKING AS REQUIRED AT DIAPER DECK AND CHILD SEAT.
8. LOCAL ARCHITECT AND G.C. TO VERIFY ADA CONDITIONS WITH BUILDING OFFICIAL PRIOR TO CONSTRUCTION.



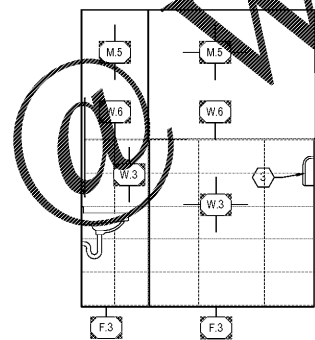
3 RESTROOM ELEVATION

A5.2 SCALE: 3/8" = 1'-0"



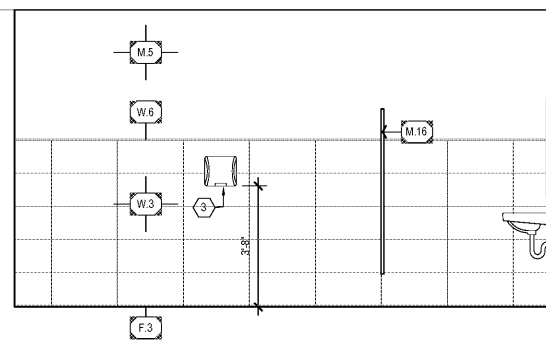
4 RESTROOM ELEVATION

A5.2 SCALE: 3/8" = 1'-0"



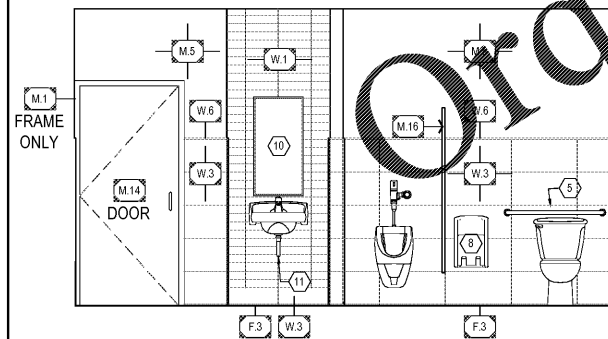
5 RESTROOM ELEVATION

A5.2 SCALE: 3/8" = 1'-0"



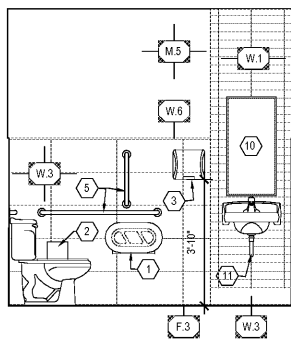
6 RESTROOM ELEVATION

A5.2 SCALE: 3/8" = 1'-0"



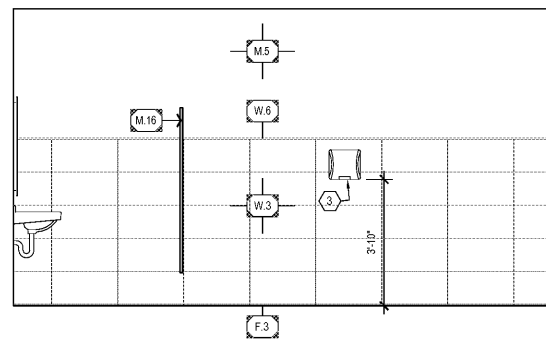
7 RESTROOM ELEVATION

A5.2 SCALE: 3/8" = 1'-0"



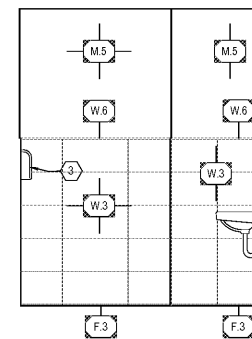
8 RESTROOM ELEVATION

A5.2 SCALE: 3/8" = 1'-0"



9 RESTROOM ELEVATION

A5.2 SCALE: 3/8" = 1'-0"



10 RESTROOM ELEVATION

A5.2 SCALE: 3/8" = 1'-0"

JAMES E. WILKERSON
A.I.A.
119 East Tallulah Drive
Greenville, S.C. 29605
864-370-2582
864-240-5375 f

FLA REG. AR0015603
JOB NO. 202016

DQ GRILL & CHILL
US HWY 90 (LOT 2)
GLEN ST MARY, FL
32040

DQ
GRILL & CHILL
AMERICAN DAIRY QUEEN
MINNEAPOLIS, MN U.S.A.

*REGISTERED U.S. PATENT OFFICE.
DAIRY QUEEN GRILL & CHILL
THIS DRAWING, ITS DESIGN DETAIL AND
INVENTION ARE THE PROPERTY OF
AMERICAN DAIRY QUEEN INC. (ADQ) AND
SHALL NOT BE COPIED IN ANY MANNER
NOR DISCLOSED TO ANY OUTSIDE
PARTY WITHOUT ADQ CONSENT.

BUILDING TYPE:
DAIRY QUEEN GRILL & CHILL
CORE66
STORE No. 45961

DRAWN, CHECKED, & APPROVED BY: ADQ
DESIGN-ARCHITECTURE-CONSTRUCTION
(DAC) DEPARTMENT

THIS IS "PLAN" NORTH
FOR ACTUAL BUILDING
ORIENTATION REFER TO
SITE PLAN (BY OTHERS)

ISSUE DATE:	10/30/2020
REVISION DATE:	10/30/2020
▲	ISSUE FOR CONSTRUCTION
▲	
▲	
▲	
▲	

RESTROOM PLAN & ELEVATIONS

SHEET NUMBER:
A5.2