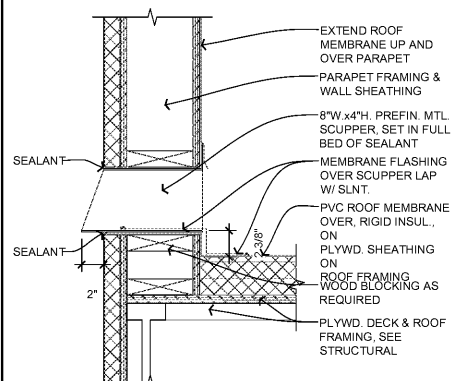
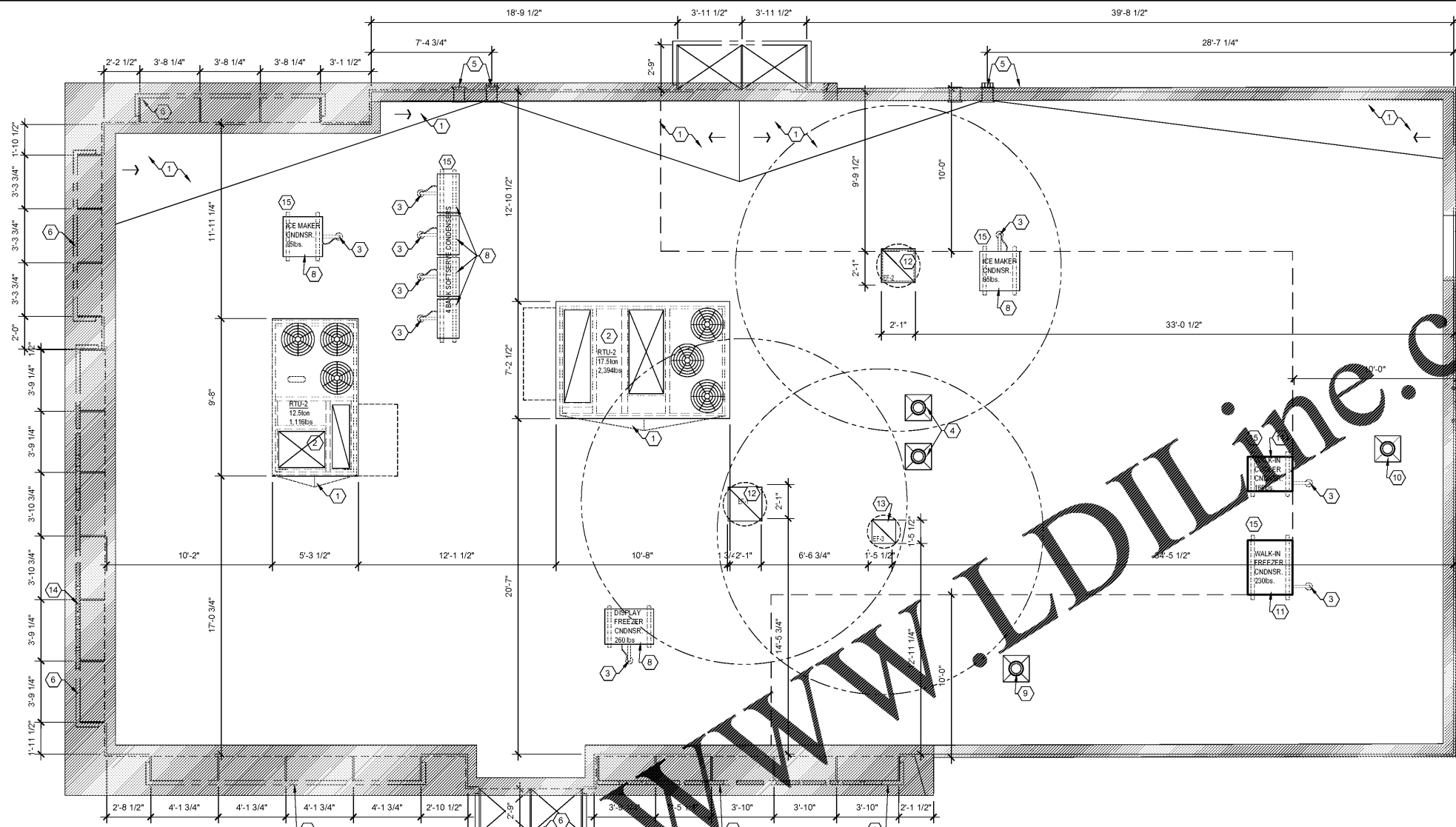


GENERAL NOTES

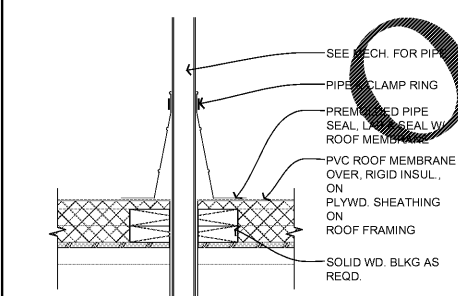
1. ROOFING CONTRACTOR SHALL BE RESPONSIBLE FOR ALL ROOF FLASHING AND COUNTER FLASHING. PROVIDING AND INSTALLING SWALES, SCUPPERS, GUTTERS, DOWNSPOUTS AND ANY OTHER ROOF DRAINAGE ITEMS AS REQUIRED.
2. ELECTRICAL AND GAS CONNECTIONS SHALL COME THRU HVAC CURBS. HVAC UNITS PROVIDED W/ ELECTRICAL AND GAS LINES PREINSTALLED, CONNECTIONS BELOW ROOF WILL BE REQUIRED.
3. COORDINATE LOCATION AND SIZE OF ALL ROOF TOP EQUIPMENT WITH MECHANICAL AND STRUCTURAL.
4. RTU MUST BE PROPERLY ALIGNED ON ROOF CURB TO ENSURE AIR SUPPLY AND RETURNS ARE NOT OBSTRUCTED.
5. GENERAL CONTRACTOR TO PROVIDE AND INSTALL A FLEXIBLE WALKWAY SYSTEM ON ROOFTOP FROM POINT OF ROOF ACCESS TO ALL ITEMS THAT REQUIRE SERVICE.
6. WHITE 50 MIL. PVC ROOF SYSTEM. NATIONAL PRICING AVAILABLE THROUGH DURALAST SEE NATIONAL VENDORS LIST.
7. WHITE 50 MIL. PVC ROOF SYSTEM AT WALK-IN. PROVIDED BY WALK-IN SUPPLIER INSTALLED BY G.C.
8. MAINTAIN 3" CLEAR DIMENSION FROM END OF EYEBROW/CANOPY TO CHIMNEY FINISH OR EXTERIOR WALL FINISH.

ROOF PLAN NOTES

- 1 TAPERED ROOF INSULATION
- 2 HVAC EQUIPMENT & CURBS BY MECHANICAL CONTRACTOR. SEE 6/A2.2
- 3 REFRIGERATION LINESET PENETRATION AS REQUIRED, SEE 7/A2.2. SEE PLUMBING DRAWINGS FOR ADDITIONAL INFORMATION.
- 4 WATER HEATER EXHAUST AND COMBUSTION AIR INTAKE. VERIFY ROOF PENETRATION REQUIREMENTS, SPACING, AND HEIGHTS WITH MANUFACTURERS REQUIREMENTS AND PREVAILING CODES. SEE PLUMBING DRAWINGS FOR ADDITIONAL INFORMATION.
- 5 THRU WALL SCUPPER TO DOWNSPOUT AND THRU WALL OVERFLOW SCUPPER. SEE 2/A2.2 & 3/A2.2. ROOFING CONTRACTOR TO COORDINATE WITH EIFS AND ALPOLIC INSTALLERS TO PROVIDE A LEAKPROOF ASSEMBLY. WRAP AND SEALPROOF IN STRICT ACCORDANCE WITH MANUFACTURERS SPECIFICATIONS.
- 6 PREFINISHED METAL EYEBROW AND CANOPY
- 7 ROOF ACCESS. OPTIONAL ROOF LADDER. SEE ELEVATION
- 8 CONDENSER. SEE 5/A2.2 & SEE MECH. DRAWINGS FOR INSTALLATION REQMTS & UNIT WEIGHTS. SHIM AS REQUIRED TO ENSURE UNITS ARE PLUMB AND LEVEL.
- 9 PLUMBING VENT. SEE 4/A2.2. SEE PLUMBING DRAWINGS FOR ADDITIONAL INFORMATION.
- 10 GREASE TRAP VENT. SEE PIPE PENETRATION DETAIL. SEE PLUMBING DRAWINGS FOR ADDITIONAL INFORMATION.
- 11 ROOFTOP CONDENSERS AND LINE-SETS PART OF WALK-IN COOLER/FREEZER PACKAGE
- 12 COOKING LINE EXHAUST FAN. SEE 6/A2.2 & MECH. DRAWINGS FOR INSTALLATION REQMTS & UNIT WEIGHTS. MUST MAINTAIN 10'-0" CLEARANCE FROM ALL AIR INTAKE
- 13 RESTROOM EXHAUST FAN. SEE 6/A2.2 & MECH. DRAWINGS FOR INSTALLATION REQMTS & UNIT WEIGHTS
- 14 EYEBROW MOUNTED "GRILL & CHILL" SIGN
- 15 REMOTE CONDENSER ON PREFABRICATED ALUMINUM STANDS. PRECISION ALUMINUM PRODUCTS, 1339 SW 1st WAY, DEERFIELD BEACH FL 33441 (954) 480-6919. ONE UNIT SYSTEM (2) 34" WIDE. VERIFY SIZES WITH CONDENSING UNITS PRIOR TO ORDERING

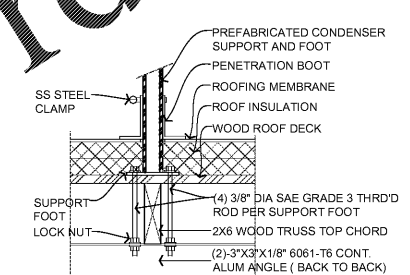


3 OVERFLOW SCUPPER DTL.
A2.2 SCALE: 1 1/2" = 1'-0"

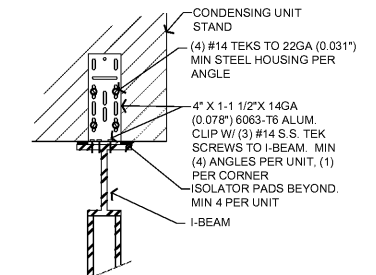


4 PIPE PENETRATION DTL.
A2.2 SCALE: 1 1/2" = 1'-0"

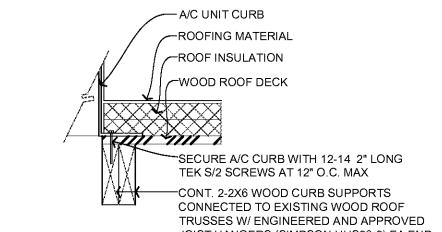
1 ROOF PLAN
A2.2 SCLAE: 1/4" = 1'-0"



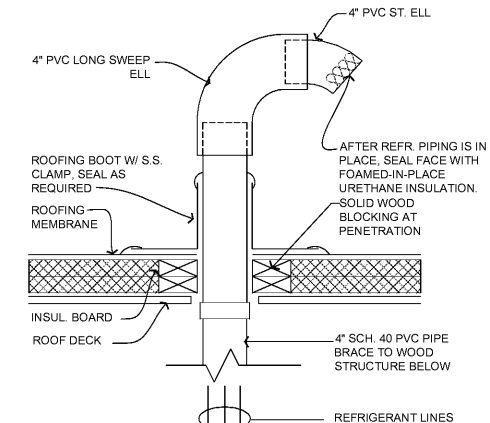
5 COND STAND DETAIL
A2.2 SCALE: 1 1/2" = 1'-0"



5A COND UNIT DETAIL
A2.2 SCALE: 3" = 1'-0"



6 MECHANICAL CURB DETAIL
A2.2 SCALE: 1 1/2" = 1'-0"



7 REF. PIPE PENETRATION DTL.
A2.2 SCALE: 1 1/2" = 1'-0"

ROOF DRAINAGE CALCULATION:
FLORIDA PLUMBING CODE 6TH EDITION, (2017)

SIZE OF ROOF AREA: 3155 SF

FIGURE 1106.1 100-YR. 1-HR RAINFALL
HUDSON = 4.5 INCHES PER 1-HR RAINFALL

CALCULATE TOTAL WATER (GPH)
623 GAL/SF X 4.5 IN/HR = 2.8 GPH/SF X 3155 SF = 8845 GPH TOTAL

1106.2 STORM DRAIN PIPE SIZING
4" VERTICAL = 180 GPM CAPACITY. 8845 GPH / (180 GPM X 60) = 0.82 OR ONE-4" VERT REQUIRED. (TWO-4" VERTICAL DRAINS PROVIDED)
4" HORIZONTAL (1/4" / FT SLOPE) = 163 GPM CAPACITY. 8845 GPH / (163 GPM X 60) = 0.9 OR ONE-4" HORIZONTAL DRAIN REQUIRED. (TWO-4" HORIZONTAL DRAINS PROVIDED)

1108 SECONDARY (EMERGENCY) ROOF DRAINS
1108.3 SIZING OF SECONDARY DRAINS
USE GUIDELINES IN 1106 BASED ON 100-YR. 1-HR RAINFALL (AS USED IN PRIMARY CALCS)

OVERFLOW SCUPPER SIZING
(4" X 8" EMERGENCY SCUPPERS PROPOSED)

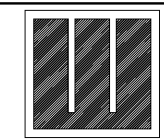
4" HEAD X 8" LENGTH (WEIR) = 3,987.8 GPH MAX PER SCUPPER
TWO 4" X 8" EMERGENCY SCUPPERS PROVIDED (7,975.6 GPH PROVIDED)

FLORIDA BUILDING CODE 6TH EDITION (2017)
1503.4.2.1 OVERFLOW SCUPPERS
OVERFLOW SCUPPERS SHALL BE PLACED NOT LESS THAN 2" AND NOT MORE THAN 4" ABOVE THE ROOF LEVEL IT SERVES, AND PLACED CLOSE TO THE REQUIRED VERTICAL LEADERS OR DOWNSPOUTS.

2 ROOF DRAINAGE CALCS
A2.2 SCALE: 1 1/2" = 1'-0"

Order Plans @

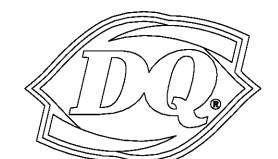
WWW.LDILINE.COM



JAMES E. WILKERSON
A.I.A.
119 East Tallulah Drive
Greenville, S.C. 29605
864-370-2582
864-240-5375 f

FLA REG. AR0015603
JOB NO. 202016

DQ GRILL & CHILL
US HWY 90 (LOT 2)
GLEN ST MARY, FL
32040



GRILL & CHILL
AMERICAN DAIRY QUEEN
MINNEAPOLIS, MN U.S.A.

*REGISTERED U.S. PATENT OFFICE.
AMERICAN DAIRY QUEEN CORPORATION.
THIS DRAWING, ITS DESIGN DETAIL AND
INVENTION ARE THE PROPERTY OF
AMERICAN DAIRY QUEEN INC. (ADQ) AND
SHALL NOT BE COPIED IN ANY MANNER
NOR DISCLOSED TO ANY OUTSIDE
PARTY WITHOUT ADQ CONSENT.

BUILDING TYPE:
DAIRY QUEEN GRILL & CHILL
CORE66
STORE No. 45961

DRAWN, CHECKED, & APPROVED BY: ADQ
DESIGN-ARCHITECTURE-CONSTRUCTION
(DAC) DEPARTMENT

THIS IS "PLAN" NORTH
FOR ACTUAL BUILDING
ORIENTATION REFER TO
SITE PLAN (BY OTHERS)

ISSUE DATE: 10/30/2020

REVISION DATE:

10/30/2020	ISSUE FOR CONSTRUCTION

ROOF PLAN & DETAILS

SHEET NUMBER:
A2.2