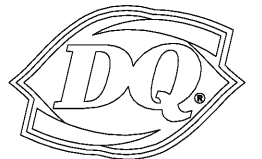


JAMES E. WILKERSON  
A.I.A.

119 East Tallulah Drive  
Greenville, S.C. 29605  
864-370-2582  
864-240-5375 f

FLA REG. AR0015603  
JOB NO. 202016

DQ GRILL & CHILL  
US HWY 90 (LOT 2)  
GLEN ST MARY, FL  
32040



GRILL & CHILL

AMERICAN DAIRY QUEEN  
MINNEAPOLIS, MN U.S.A.

\*REGISTERED U.S. PATENT OFFICE.  
AMERICAN DAIRY QUEEN CORPORATION,  
THIS DRAWING, ITS DESIGN DETAIL AND  
INVENTION ARE THE PROPERTY OF  
AMERICAN DAIRY QUEEN INC. (ADQ) AND  
SHALL NOT BE COPIED IN ANY MANNER  
NOR DISCLOSED TO ANY OUTSIDE  
PARTY WITHOUT ADQ CONSENT.

BUILDING TYPE:  
DAIRY QUEEN GRILL & CHILL  
CORE66  
STORE No. 45961

DRAWN, CHECKED, & APPROVED BY: ADQ  
DESIGN-ARCHITECTURE-CONSTRUCTION  
(DAC) DEPARTMENT

THIS IS "PLAN" NORTH  
FOR ACTUAL BUILDING  
ORIENTATION REFER TO  
SITE PLAN (BY OTHERS)

ISSUE DATE: 10/30/2020

REVISION DATE:

10/30/2020 ISSUE FOR CONSTRUCTION

SITE PLAN &  
DETAILS

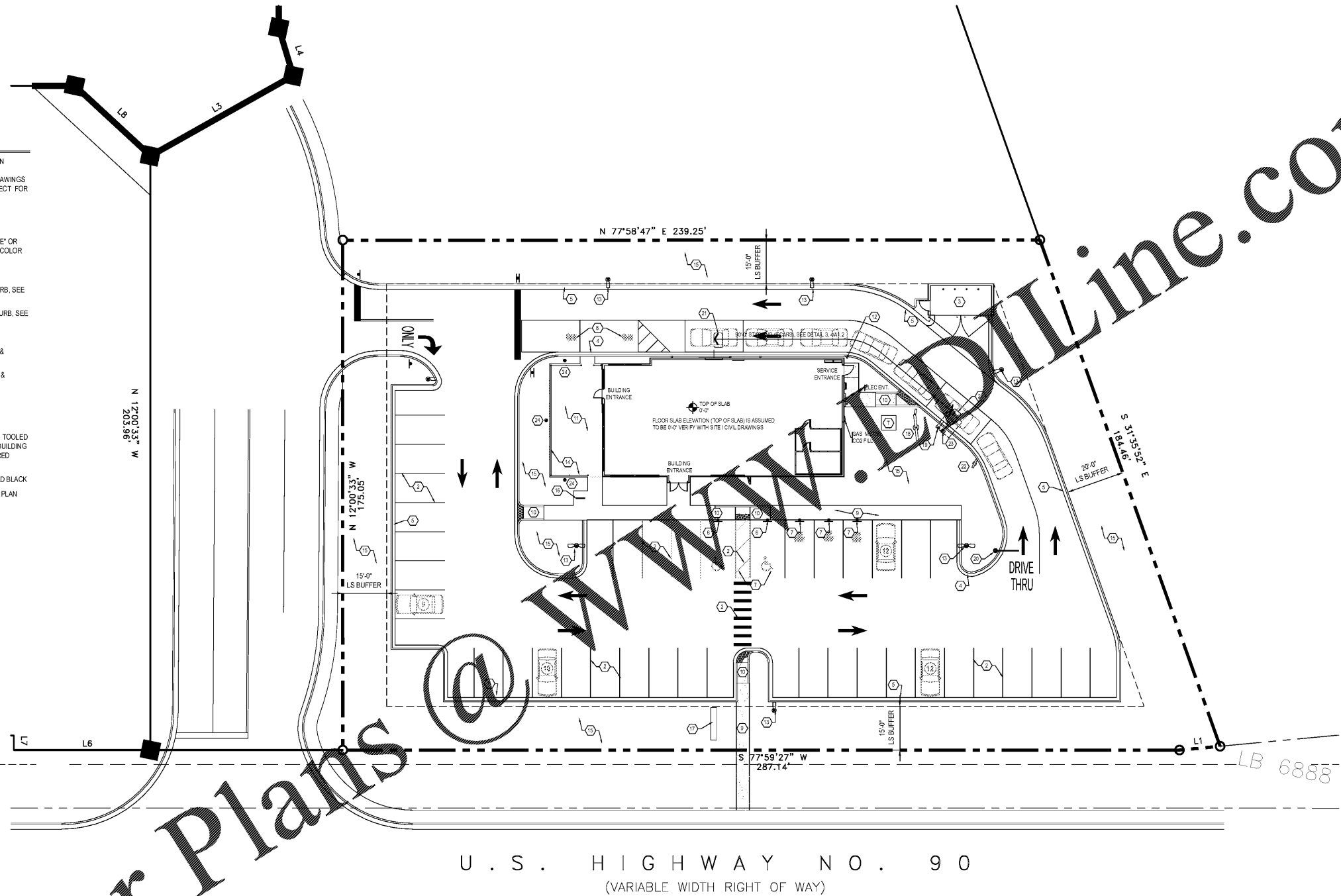
SHEET NUMBER:

A1.1

SITE PLAN NOTES

IT IS THE INTENT OF THIS DRAWING TO PROVIDE INFORMATION  
RELATING TO SITE DESIGN ELEMENTS WHICH ARE TO BE  
INCORPORATED INTO THE FINAL SITE DESIGN. REFER TO DRAWINGS  
PREPARED BY THE CIVIL ENGINEER AND LANDSCAPE ARCHITECT FOR  
FINAL SITE DEVELOPMENT INFORMATION.

- 1 PROPOSED ELECTRICAL TRANSFORMER LOCATION
- 2 PARKING LOT STRIPING COLOR TO BE "HIGHWAY WHITE" OR "SAFETY YELLOW". HANDICAPPED STALL PICTOGRAM COLOR AS PER LOCAL CODE. VERIFY. SEE SPECIFICATIONS.
- 3 TRASH ENCLOSURE SEE: 2/A1.1A THRU 4/A1.1A
- 4 CONCRETE CURBING BLDG. PERIMETER: VERTICAL CURB, SEE CIVIL DWGS
- 5 CONCRETE CURBING SITE PERIMETER: MOUNTABLE CURB, SEE CIVIL DWGS
- 6 ACCESSIBLE PARKING SIGNAGE. SEE DETAIL 6/A1.2
- 7 MOBILE ORDER PARKING SIGNAGE. SEE DETAIL 6/A1.2 & PAVING STENCIL
- 8 DT PULL AHEAD PARKING SIGNAGE. SEE DETAIL 6/A1.2 & PAVING STENCIL
- 9 CONCRETE SIDEWALK
- 10 CURB RAMP SEE CIVIL DWGS
- 11 CONCRETE PATIO: BROOM FINISHED CONCRETE WITH TOOLED JOINTS @ 8'-0" EA. WAY TYPICAL. SLOPE AWAY FROM BUILDING 1/8" PER FOOT. ALTERNATIVE PATIO: STAMPED/COLORED CONCRETE. SEE MATERIAL M.29 ON A3.3
- 12 48" HIGH BOLLARD 6" STEEL W/CONCRETE FILL PAINTED BLACK
- 13 LIGHT POLE. SEE DETAIL 9/A1.2 AND ELECTRICAL SITE PLAN
- 14 PATIO RAILING. SEE DETAIL 5/A1.2
- 15 LANDSCAPING TO BE BY GENERAL CONTRACTOR PER LANDSCAPE ARCHITECTS PLAN
- 16 BIKE RACK. SEE CIVIL DWGS
- 17 PYLON SIGN. SEE DETAIL 8/A1.2 & SHEET A3.3
- 18 MENU BOARD. SEE 11/A1.2 & SHEET A3.3
- 19 SPEAKER. SEE DETAIL 12/A1.2
- 20 CLEARANCE SIGN. SEE 10/A1.2
- 21 LOOP INDUCTION SYSTEM. SEE 11/A1.2 OR 3/A1.2
- 22 PREVIEW BOARD. SEE DETAIL 14/A1.2 & SHEET A3.3
- 23 CANOPY AT DRIVE-THRU SPEAKER. SEE 15/A1.3
- 24 PATIO LIGHTS. SEE 10/A1.2 & SHEET E3.3



1 ARCHITECTURAL SITE PLAN  
A1.1 SCALE: 1" = 20'-0"

