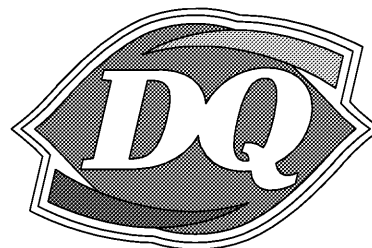


INDEX OF SHEETS	
DWG.NO.	DESCRIPTION
1	COVER
SU-1	BOUNDARY AND TOPOGRAPHIC SURVEY
SU-2	BOUNDARY AND TOPOGRAPHIC SURVEY
3	DEVELOPMENT INFORMATION
4	DEMOLITION AND SWPPP PLAN
5	SWPPP DETAILS AND NOTES
6	SITE LAYOUT PLAN
7	DRAINAGE PLAN
8	GRADING PLAN
9	RETAINING WALL DETAILS
10	RETAINING WALL NOTES
11	CROSS SECTIONS
12	UTILITY PLAN
13	UTILITY DETAILS AND NOTES
14	MISCELLANEOUS DETAILS AND NOTES
15	CITY OF MACCLENNY STANDARD UTILITY DETAILS
16	CITY OF MACCLENNY STANDARD UTILITY DETAILS
17	MAINTENANCE OF TRAFFIC DETAILS
L1	LANDSCAPE PLAN
L2	IRRIGATION PLAN
L3	LANDSCAPE DETAILS AND NOTES

SITE PLAN DRAWINGS FOR



HIGH TURNOVER RESTAURANT
SECTION 36, TOWNSHIP 2S, RANGE 21E
362S21000000000345
6567 US HIGHWAY 90
GLEN ST. MARY, FL 32040
DECEMBER 2020

PROJECT TEAM

PROPERTY OWNER/ APPLICANT: VASUDEV PROPERTY, LLC
 858 NW SAVANNAH CIRCLE
 LAKE CITY, FL 32055
 PHONE: (215) 669-3283
 EMAIL: HARIKRUPA805@YAHOO.COM

CIVIL ENGINEER/ PROJECT MANAGER/ LANDSCAPE ARCHITECT: NEWKIRK ENGINEERING, INC.
 1230 NORTH US HIGHWAY 1, SUITE 3
 ORMOND BEACH, FL 32174
 PHONE: (386) 872-7794
 EMAIL: HARRY@NEWKIRK-ENGINEERING.COM

ARCHITECT: WILKERSON ARCHITECTS, LLC
 119 EAST TALLULAH DRIVE
 GREENVILLE, SC 29605
 PHONE: (864) 370-2582
 EMAIL: WILKPOE@CHARTER.NET

SURVEYOR: A1A SURVEYING, INC.
 555 W. GRANADA BLVD., STE D7
 ORMOND BEACH, FL 32174
 PHONE: (386) 216-5730
 EMAIL: ALLEN@A1ASURVEYING.COM

GEOTECHNICAL: UNIVERSAL ENGINEERING SCIENCES INC
 911 BEVILLE ROAD, SUITE 3
 SOUTH DAYTONA, FL 32119
 PHONE: (386) 756-1105
 EMAIL: BPOHL@UNIVERSALENGINEERING.COM

CONTACT NUMBERS

PLANNING DIVISION - BAKER COUNTY (904) 501-6622
 BUILDING SERVICES - BAKER COUNTY (904) 501-6622
 WATER - BAKER COUNTY UTILITY DIVISION (904) 259-0969
 WASTEWATER - BAKER COUNTY UTILITY DIVISION (904) 259-0969
 GAS - TECO PEOPLES GAS - (904) 759-9774
 ELECTRIC - FLORIDA POWER & LIGHT (800) 462-0561
 TELEPHONE/CABLE - AT&T (904) 259-2300

LEGAL DESCRIPTION

A PARCEL OF LAND BEING LOCATED IN THE SOUTHEAST 1/4 OF SECTION 39, TOWNSHIP 2 SOUTH, RANGE 21 EAST, BAKER COUNTY, FLORIDA, AND BEING MORE PARTICULARLY DESCRIBED AS FOLLOWS:

FOR A POINT OF COMMENCEMENT BEING AT THE SOUTHEAST CORNER OF THE NORTHEAST 1/4 OF SAID SECTION 36; THENCE SOUTH 87°10'17" WEST, ALONG THE SOUTHERLY LINE OF SAID NORTHEAST 1/4, A DISTANCE OF 597.79 FEET TO THE POINT OF BEGINNING OF THE HEREIN DESCRIBED PARCEL OF LAND; THENCE SOUTH 87°10'17" WEST, CONTINUING ALONG SAID SOUTHERLY LINE, A DISTANCE OF 480.36 FEET TO A POINT; THENCE SOUTH 20°54'41" EAST, DEPARTING SAID SOUTHERLY LINE A DISTANCE OF 501.60 FEET TO A POINT BEING LOCATED ON THE NORTHERLY RIGHT-OF-WAY LINE OF U.S. HIGHWAY 90 (A VARIABLE WIDTH RIGHT-OF-WAY, AS NOW ESTABLISHED); THENCE ALONG SAID NORTHERLY RIGHT-OF-WAY LINE THE FOLLOWING FOUR (4) COURSES AND DISTANCES: COURSE No. 1: THENCE NORTH 77°59'27" EAST, A DISTANCE OF 133.00 FEET TO A POINT; COURSE No. 2: THENCE SOUTH 12°00'33" EAST, A DISTANCE OF 5.00 FEET TO A POINT; COURSE No. 3: THENCE NORTH 77°59'27" EAST, A DISTANCE OF 400.00 FEET TO A POINT; COURSE No. 4: THENCE NORTH 72°36'34" EAST, A DISTANCE OF 14.02 FEET TO A POINT; THENCE NORTH 31°35' 52" WEST, DEPARTING SAID NORTHERLY RIGHT-OF-WAY LINE, A DISTANCE OF 448.56 FEET TO THE POINT OF BEGINNING.

PROJECT STATEMENT

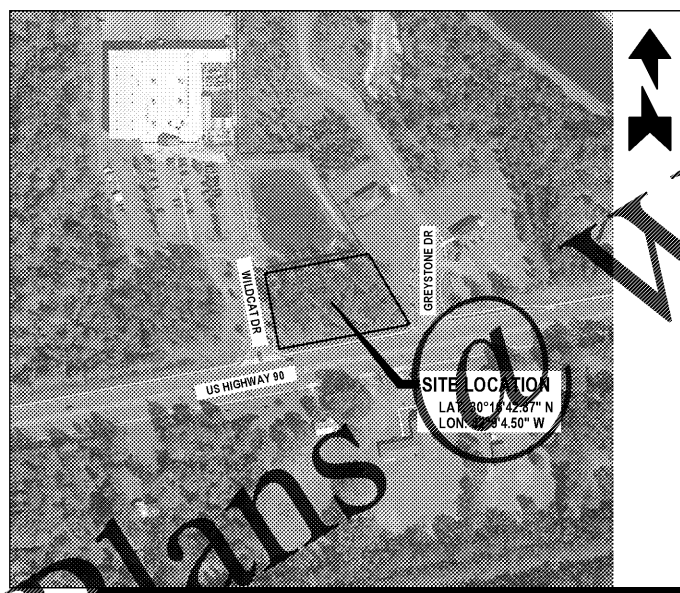
PROPOSED PROJECT IS A 2,732 SF DAIRY QUEEN "GRILL & CHILL" WITH DRIVE THROUGH SITE ACCESS WILL BE PROVIDED FROM US 90 VIA EXISTING DRIVEWAY CONNECTION. PAVING WILL CONSIST OF 43 SPACES (2 HANDICAP AND 41 STANDARD) WITH 5 BICYCLE SPACES. THE PROPOSED SITE CONSISTS OF 1.088 ACRES WITH 0.617 ACRES OF IMPERVIOUS SURFACE. SITE WORK WILL CONSIST OF PAVING, GRADING, DRAINAGE, UTILITY AND LANDSCAPE IMPROVEMENTS.

JURISDICTIONAL AGENCY PERMIT No.

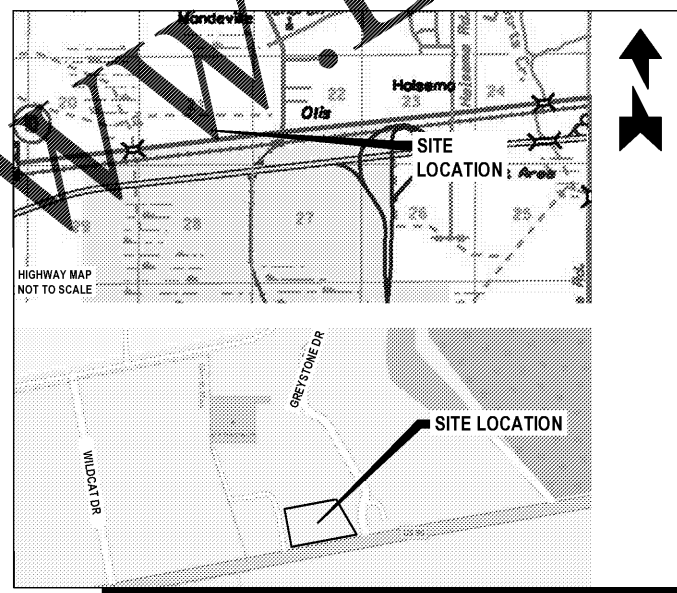
BAKER COUNTY (DEVELOPMENT ORDER)
 SJRWMD (ERP)
 FDEP (NPDES NOI)

THE GENERAL CONTRACTOR SHALL ENSURE THAT ANY SUBCONTRACTOR HAS A COMPLETE SET OF CONSTRUCTION DRAWINGS FOR ITS RESPECTIVE WORK. THE ENGINEER ASSUMES NO RESPONSIBILITY FOR SUBCONTRACTORS ONLY UTILIZING INDIVIDUAL DRAWINGS FOR ITS WORK WHERE ADDITIONAL INFORMATION MAY BE CONTAINED ON OTHER DRAWINGS WITHIN THE SET.

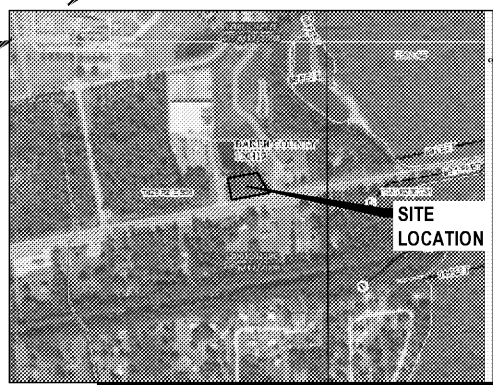
THESE DRAWINGS ARE THE PROPERTY OF NEWKIRK ENGINEERING, INC. ANY USE OR REPRODUCTION IN WHOLE OR PART IS PROHIBITED WITHOUT THE EXPRESSED WRITTEN CONSENT OF NEWKIRK ENGINEERING, INC. COPYRIGHT 2013 ALL RIGHTS RESERVED.



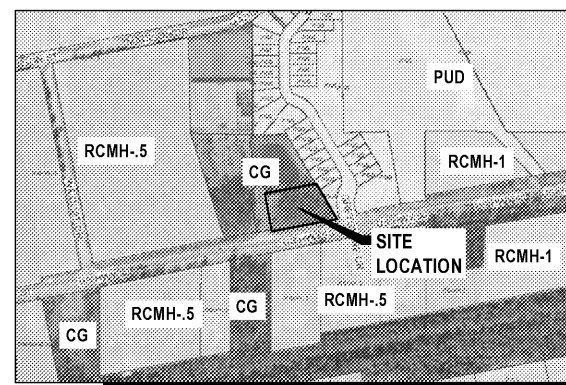
AERIAL MAP
 SCALE: 1" = 200'



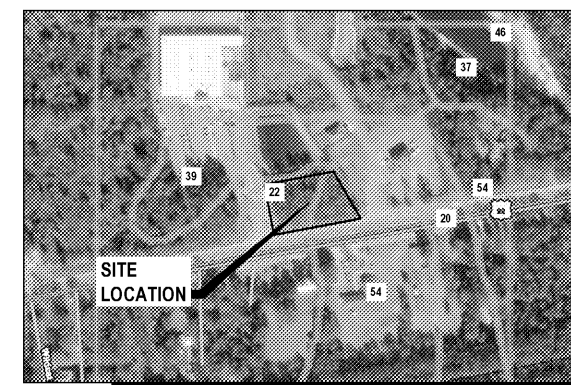
LOCATION MAP
 SCALE: 1" = 400'



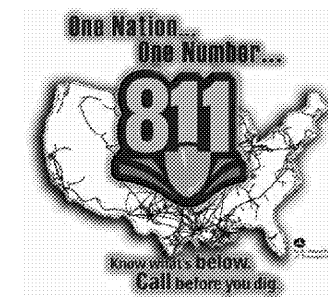
FLOOD ZONE MAP
 FLOOD ZONE "X"
 SCALE: 1" = 700' PANEL No. 12003C0219 C, EFF. 6/17/2008



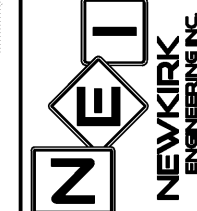
ZONING MAP
 ZONING: (CG) COMMERCIAL GENERAL
 SCALE: 1" = 400'



SOILS MAP
 SOIL TYPE: (22) LEEFIELD FINE SAND, 0 TO 5 PERCENT SLOPES
 (54) ALBANY FINE SAND, 0 TO 5 PERCENT SLOPES
 SCALE: 1" = 300'



1230 North US1, Suite 3
 Ormond Beach, Florida 32174
 Phone (386) 872-7794
 www.NewKirk-Engineering.com
 C.A. # 30209
 L.C. # 26000584
 © 2013
 Civil Engineering
 Transportation, CEI &
 Landscape Architecture



HARRY H. NEWKIRK, P.E. # 62971
 DRAWING NUMBER

1