

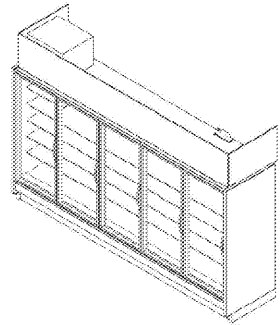
REACH-IN FREEZER/COOLER UNIT

JNRBHS A

High Narrow Reach-In Self Contained Merchandiser  
1, 2, 3, 4, 5 Door & 4' (Dairy/Deli/Beverage)

GENERAL NOTES:

- Lighting Controls and Anti-Sweat Heat Controls are Required
- Option 1: OEM Provided
- Occupancy Sensor Based Lighting Controls (OSBC) & HiPhoenix provided embedded Anti-Sweat Controls are standard, unless otherwise specified
- Option 2: End User Provided
- Lighting Controls should be Occupancy Sensor Based on a minimum 8 Hour Off Schedule. Customer provided A/S Heat Controls should be set to 30% minimum off time at 75°F/55%RH
- 1 Door & 4 case lengths available in 202V R404A/R404A Condensing Unit Configuration
- 2, 3, 4 & 5 door lengths available in 202V R404A/R404A Condensing Unit Configuration



SHIPPING WEIGHT

Case	Weight
JNRBHS A	

Rev. Date	Rev. #	Rev. Title
10-16-19	11	DATA UPDATE
10-16-19	10	ENDVIEW UPDATE

REACH-IN FREEZER/COOLER SHEET 1 OF 8

JNRBHS A (R404A)

High Narrow Reach-In Self Contained Merchandiser  
1, 2, 3, 4, 5 Door & 4' (Dairy/Deli/Beverage)

SYSTEM REQUIREMENT (R404A REFRIGERANT)

Case Length	Volts	Phase	Frequency	Minimum Circuit Ampacity (MCA)	Maximum Disconnect Protection (MDP)
2 Door	208	1	60	16.3	20
3 Door	208	1	60	16.5	20
4 Door	208	1	60	16.5	20
5 Door	208	1	60	16.4	20

\* 24 Hour Energy values include evaporator fans, standard LED's, anti-condensate heat & condensing unit

GUIDELINES AND CONTROL SETTINGS (R404A REFRIGERANT)

Case Length	Application	Set Point @ Bulb (°F)	Set Point Differential (°F)	Discharge Air (°F)	Discharge Air Velocity (FPM)
2-5 Door	Beverage	5-8	35	0	250
2-5 Door	Deli	5-8	35	0	250
2-5 Door	Meat	6-8	35	0	250

CONDENSING UNIT DATA (R404A REFRIGERANT)

Case Length	Volts	Phase	Frequency	Motorpower	Running Load Amps (RLA)	Locked Rotor Amps (LRA)	Refrigerant	Volts of Refrigerant
2 Door	208	1	60	1.0	4.2	18.9	R404A	2.2
3 Door	208	1	60	1.0	4.2	18.8	R404A	2.2
4 Door	208	1	60	1.0	4.2	18.8	R404A	2.2
5 Door	208	1	60	1.2	5.3	28.5	R404A	3.5

DEFROST CONTROLS (R404A REFRIGERANT)

Case Length	Defrosts Per Day	Run Time (Min)	Full Scale (Min)	Termination Temp (°F)
2-5 Door	2	0	45	44

DEFROST SCHEDULE (R404A REFRIGERANT)

Defrosts Per Day	Time
2	12 AM - 12 PM

NOTES:

- indicates that this feature is not an option on this case model
- Listed discharge air velocity represents the average velocity at the peak of defrost
- Temperatures and defrost settings listed below are recommended start-up settings. Final operational settings may need to be adjusted for the store conditions in which the case operates
- The recommended evaporator temperatures may need to be adjusted based on system setup, store conditions, etc. The minimum recommended evaporator temperature is 4°F below the listed evaporator temperature
- The 24 Hour Energy value is based upon ANSI Z90 heat conditions with HiPhoenix provided lights, occupancy sensor based (osbc) lighting control and dew point based anti-sweat heat control

SHIPPING WEIGHT

Case	Weight
JNRBHS A (R404A)	

Rev. Date	Rev. #	Rev. Title
10-16-19	11	DATA UPDATE
10-16-19	10	ENDVIEW UPDATE

REACH-IN FREEZER/COOLER SHEET 2 OF 8

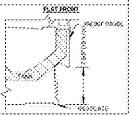
JNRBHS A

High Narrow Reach-In Self Contained Merchandiser  
1, 2, 3, 4, 5 Door & 4' (Dairy/Deli/Beverage)

DOOR OPTIONS



FRONT OPTIONS



SHIPPING WEIGHT

Case	Weight
JNRBHS A	

Rev. Date	Rev. #	Rev. Title
10-16-19	11	DATA UPDATE
10-16-19	10	ENDVIEW UPDATE

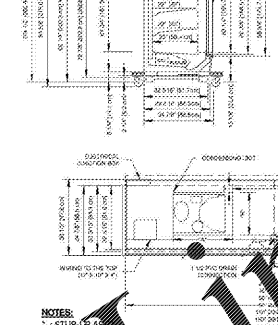
REACH-IN FREEZER/COOLER SHEET 3 OF 8

JNRBHS A

High Narrow Reach-In Self Contained Merchandiser  
1, 2, 3, 4, 5 Door & 4' (Dairy/Deli/Beverage)

GENERAL NOTES:

- Lighting Controls and Anti-Sweat Heat Controls are Required
- Option 1: OEM Provided
- Occupancy Sensor Based Lighting Controls (OSBC) & HiPhoenix provided embedded Anti-Sweat Controls are standard, unless otherwise specified
- Option 2: End User Provided
- Lighting Controls should be Occupancy Sensor Based on a minimum 8 Hour Off Schedule. Customer provided A/S Heat Controls should be set to 30% minimum off time at 75°F/55%RH
- 1 Door & 4 case lengths available in 202V R404A/R404A Condensing Unit Configuration
- 2, 3, 4 & 5 door lengths available in 202V R404A/R404A Condensing Unit Configuration



SHIPPING WEIGHT

Case	Weight
JNRBHS A	

Rev. Date	Rev. #	Rev. Title
10-16-19	11	DATA UPDATE
10-16-19	10	ENDVIEW UPDATE

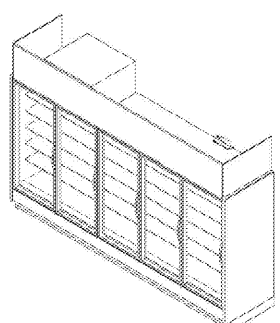
REACH-IN FREEZER/COOLER SHEET 4 OF 8

JNRZHS A

High Narrow Reach-In Self Contained Merchandiser  
2, 3, 4 & 5 Door (Frozen Food)

GENERAL NOTES:

- Lighting Controls and Anti-Sweat Heat Controls are Required
- Option 1: OEM Provided
- Occupancy Sensor Based Lighting Controls (OSBC) & HiPhoenix provided embedded Anti-Sweat Controls are standard, unless otherwise specified
- Option 2: End User Provided
- Lighting Controls should be Occupancy Sensor Based on a minimum 8 Hour Off Schedule. Customer provided A/S Heat Controls should be set to 30% minimum off time at 75°F/55%RH
- 2, 3, 4 & 5 door case lengths are available in 202V R404A/R404A Condensing Unit Configuration



SHIPPING WEIGHT

Case	Weight
JNRZHS A	

Rev. Date	Rev. #	Rev. Title
10-17-19	7	ENDVIEW UPDATE
9-12-19	6	DATA UPDATE

REACH-IN FREEZER/COOLER SHEET 5 OF 8

JNRZHS A (R404A)

High Narrow Reach-In Self Contained Merchandiser  
2, 3, 4 & 5 Door (Frozen Food)

SYSTEM REQUIREMENT (R404A)

Case Length	Volts	Phase	Frequency	Minimum Circuit Ampacity (MCA)	Maximum Disconnect Protection (MDP)
2 Door	208	1	60	24.1	30.0
3 Door	208	1	60	24.9	30.0
4 Door	208	1	60	28.8	36.0
5 Door	208	1	60	30.0	30.0

\* 24 Hour Energy values include evaporator fans, standard LED's, anti-condensate heat & condensing unit

GUIDELINES AND CONTROL SETTINGS (R404A)

Case Length	Superheat	Set Point @ Bulb (°F)	Set Point Differential (°F)	Discharge Air (°F)	Discharge Air Velocity (FPM)
2 Door	5-5	8	9	300	
3 Door	5-5	8	9	300	
4 Door	5-5	8	9	300	
5 Door	5-5	8	9	300	

CONDENSING UNIT DATA (R404A)

Case Length	Volts	Phase	Frequency	Motorpower	Running Load Amps (RLA)	Locked Rotor Amps (LRA)	Refrigerant	Volts of Refrigerant
2 Door	208	1	60	3.4	6.0	45.0	R404A	2.8
3 Door	208	1	60	3.4	6.0	45.0	R404A	2.8
4 Door	208	1	60	11.4	12.8	55.0	R404A	3.7
5 Door	208	1	60	2	12.0	58.0	R404A	3.2

DEFROST CONTROLS (R404A)

Defrosts Per Day	Run Time (Min)	Full Scale (Min)	Termination Temp (°F)
1	0	45	49

DEFROST SCHEDULE (R404A)

Defrosts Per Day	Time
1	12 midnight

NOTES:

- indicates that this feature is not an option on this case model
- Listed discharge air velocity represents the average velocity at the peak of defrost
- Temperatures and defrost settings listed below are recommended start-up settings. Final operational settings may need to be adjusted for the store conditions in which the case operates
- The recommended evaporator temperatures may need to be adjusted based on system setup, store conditions, etc. The minimum recommended evaporator temperature is 4°F below the listed evaporator temperature
- The 24 Hour Energy value is based upon ANSI Z90 heat conditions with HiPhoenix provided lights, occupancy sensor based (osbc) lighting control and dew point based anti-sweat heat control

SHIPPING WEIGHT

Case	Weight
JNRZHS A (R404A)	

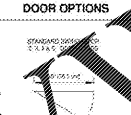
Rev. Date	Rev. #	Rev. Title
10-17-19	7	ENDVIEW UPDATE
9-12-19	6	DATA UPDATE

REACH-IN FREEZER/COOLER SHEET 6 OF 8

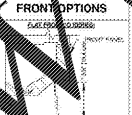
JNRZHS A

High Narrow Reach-In Self Contained Merchandiser  
2, 3, 4 & 5 Door (Frozen Food)

DOOR OPTIONS



FRONT OPTIONS



SHIPPING WEIGHT

Case	Weight
JNRZHS A	

Rev. Date	Rev. #	Rev. Title
10-17-19	7	ENDVIEW UPDATE
9-12-19	6	DATA UPDATE

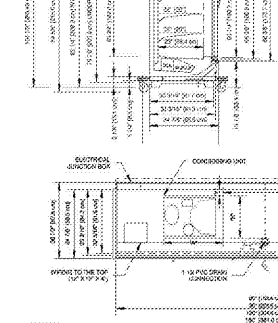
REACH-IN FREEZER/COOLER SHEET 7 OF 8

JNRZHS A

High Narrow Reach-In Self Contained Merchandiser  
2, 3, 4 & 5 Door (Frozen Food)

GENERAL NOTES:

- Lighting Controls and Anti-Sweat Heat Controls are Required
- Option 1: OEM Provided
- Occupancy Sensor Based Lighting Controls (OSBC) & HiPhoenix provided embedded Anti-Sweat Controls are standard, unless otherwise specified
- Option 2: End User Provided
- Lighting Controls should be Occupancy Sensor Based on a minimum 8 Hour Off Schedule. Customer provided A/S Heat Controls should be set to 30% minimum off time at 75°F/55%RH
- 2, 3, 4 & 5 door case lengths are available in 202V R404A/R404A Condensing Unit Configuration



SHIPPING WEIGHT

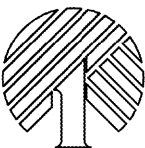
Case	Weight
JNRZHS A	

Rev. Date	Rev. #	Rev. Title
10-17-19	7	ENDVIEW UPDATE
9-12-19	6	DATA UPDATE

REACH-IN FREEZER/COOLER SHEET 8 OF 8

Order Plans @ WWW.DOLLARTREE.COM

Date	Project	Designed	Drawn	Checked



FOR REFERENCE ONLY

DOLLAR TREE  
REACH-IN UNITS DETAILS AND SPECIFICATIONS

project drawing

sheet

DS1

FOR REFERENCE ONLY