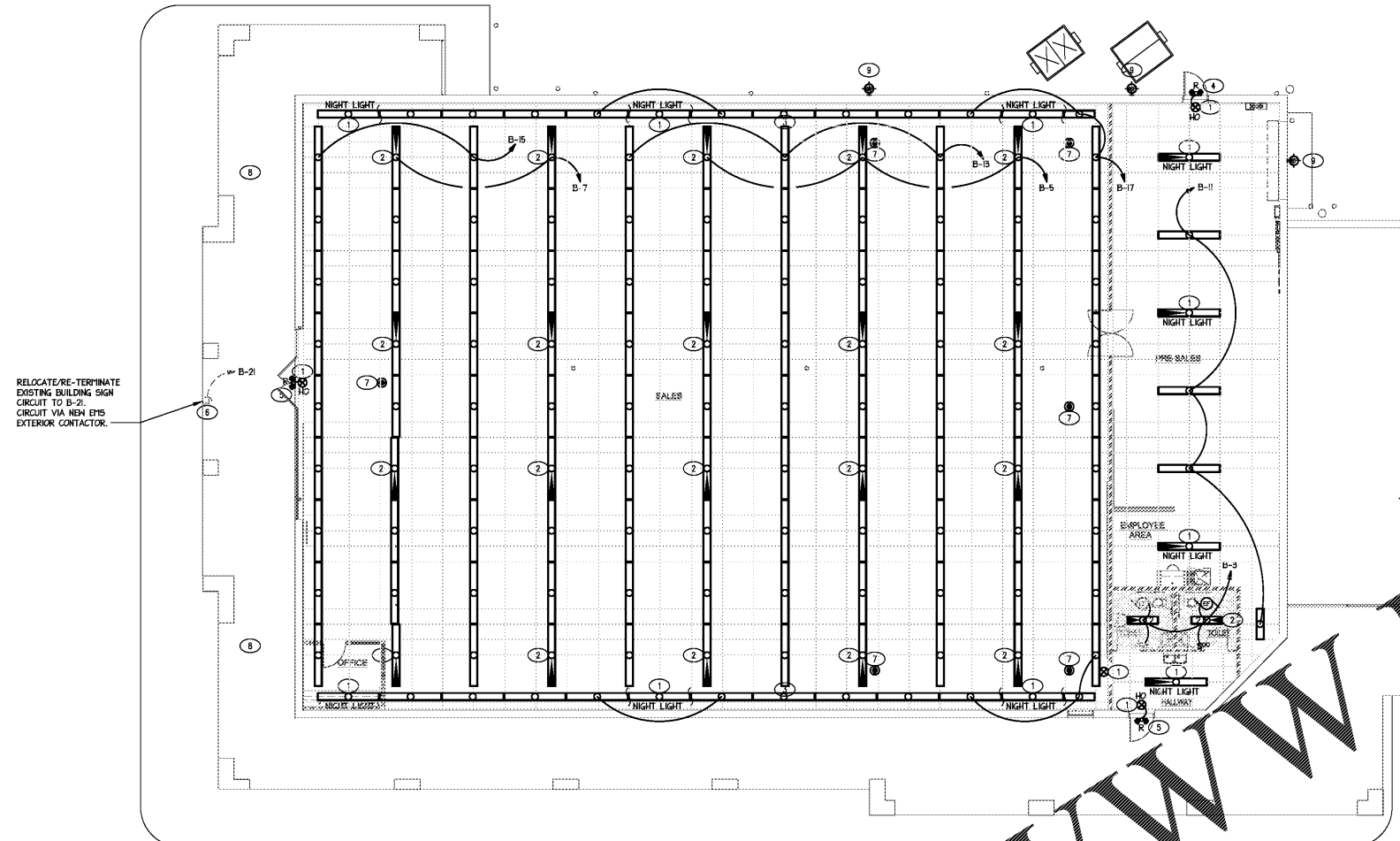


LIGHT FIXTURES SHALL BE SUPPLIED BY DOLLAR TREE AND INSTALLED BY CONTRACTOR.



LIGHTING PLAN
SCALE: 1/8"=1'-0"

LIGHTING FIXTURE SCHEDULE						
FIXTURE	DESCRIPTION	NUMBER AND TYPE OF LAMPS	WATTS	VOLTS	MOUNTING	NOTES
	8' STRIP LIGHT	(2) 18W LED LINEAR T5 TUBES	36	120	NOTE 6	1,2,3,4,5,6
	8' STRIP EMERGENCY LIGHT WITH INTEGRAL 90 MINUTE BATTERY BACKUP	(2) 18W LED LINEAR T5 TUBES	36	120	NOTE 6	1,2,3,4,5,6
	4' STRIP LIGHT	(1) 18W LED LINEAR T5 TUBE	18	120	NOTE 6	1,2,3,4,5,6
	4' STRIP EMERGENCY LIGHT WITH INTEGRAL 90 MINUTE BATTERY BACKUP	(2) 18W LED LINEAR T5 TUBE	36	120	NOTE 6	1,2,3,4,5,6
	INTERIOR EMERGENCY LIGHT (2 HEADS) WITH INTEGRAL 90 MINUTE BATTERY BACKUP	(2) 1W LED	2	120	SURFACE	1,2,4
	EXIT SIGN WITH SINGLE FACE WITH INTEGRAL 90 MINUTE BATTERY BACKUP	LED	5	120	CHEST FOR HALL	1,2,4
	EXIT SIGN WITH SINGLE FACE WITH INTEGRAL 90 MINUTE BATTERY BACKUP. CONNECT TO EXTERIOR REMOTE HEADS.	LED	5	120	CEILING OR HALL	1,2,4
	EXTERIOR EMERGENCY LIGHT REMOTE HEADS CONNECT TO EXIT SIGN HI-OUTPUT BATTERY BACKUP.	(2) 1W LED	2	120	SURFACE	1,2,4
	EXTERIOR WALL PAK LIGHT NEL-14P170	LED	120	120	WALL FTG. HEIGHT PER ARCHITECTURAL ELEVATIONS	1,2,4

NOTES:
 1. ALL LAMPS SHALL BE PROVIDED WITH LIGHT FIXTURES.
 2. CONTRACTOR SHALL COORDINATE PLACEMENT OF LIGHT FIXTURES WITH CIRCUIT VOLTAGE.
 3. LIGHT FIXTURES DENOTED BY "NIGHT LIGHT" OR "NL" SHALL REMAIN ON 247.
 4. CONTRACTOR SHALL PROVIDE ALL NECESSARY SUPPLY HARDWARE AND ADAPTERS FOR EACH LIGHT FIXTURE UNLESS NOTED OTHERWISE.
 5. COORDINATE LIGHT FIXTURE MOUNTING HEIGHTS TO CEILING TYPE. REFER TO ARCHITECTURAL PLANS.
 6. LIGHT FIXTURES IN SALES AREA AND PREPARED AREA SHALL BE SURFACE MOUNTED TO BOTTOM OF LAY-IN CEILING AT 12'-4". FOR ALL OTHER AREAS, LIGHT FIXTURES SHALL BE SURFACE MOUNTED TO BOTTOM OF CEILING. FOR LIGHT FIXTURES SURFACE MOUNTED TO CEILING, EACH LIGHT FIXTURE TO T-BAR PER NEC 410-36.

LIGHTING PLAN LEGEND	
	2'-0"x4'-0" ACOUSTICAL CEILING TILE AND GRID.
	GNB - PAINT WHITE UNLESS OTHERWISE NOTED.
	CEILING EXHAUST FAN. PROVIDE DISCONNECTING MEANS AS REQUIRED BY CODE.
	POWER POLE
	OCCUPANCY SENSOR SWITCH WITH OVERRIDE SWITCH, MOUNTED 46" A.F.F TO CENTER. PROVIDE SENSOR SWITCH MODEL #MSD-HL
	CEILING RECEPTACLE, 120V, 20A
	DESIGNATES END OF CIRCUIT

- TAGGED NOTES (LIGHTING PLAN):**
- ALL EXIT SIGNS, NIGHT LIGHTS, AND NIGHT LIGHTS WITH INTEGRAL BATTERY BACKUP SHALL BE CIRCUITED TO PANEL 'B', CIRCUIT 'N'. WIRING NOT SHOWN FOR DRAWING CLARITY.
 - WIRE EMERGENCY BATTERY BALLAST TO HOT LEG, AHEAD OF ANY LOCAL SWITCHING, INCLUDING CONTACTORS.
 - DISTANCE BETWEEN END OF ROW AND PERIMETER LIGHTS SHALL BE MAXIMUM 12".
 - EXTERIOR REMOTE EMERGENCY LIGHT (2 HEADS) MOUNTED CENTERED ABOVE DOOR AT 7'-4". EXTERIOR EMERGENCY LIGHT SHALL BE WIRED TO EMERGENCY EXIT SIGN HI-OUTPUT BATTERY BACKUP.
 - EXTERIOR REMOTE EMERGENCY LIGHT (2 HEADS) POINTED LIGHTS TO ENTRY SOFFIT. EXTERIOR EMERGENCY LIGHT SHALL BE WIRED TO NEW EMERGENCY EXIT SIGN HI-OUTPUT BATTERY BACKUP.
 - ELECTRICAL CONTRACTOR SHALL COORDINATE FINAL JUNCTION BOX LOCATION WITH SIGN VENDOR. JUNCTION BOX NEEDS TO BE WITH FIVE FEET OF 1/2" AND INCLUDE 6" MINIMUM SIGN VENDOR TO MAKE FINAL CONNECTION. CIRCUIT FOR SIGN SHALL BE RATED THROUGH THE ENERGY MANAGEMENT SYSTEM, "EXTERIOR LIGHTING" CONTACTOR, FOR CONTROL.
 - DUPLEX OUTLET TO BE PROVIDED BY CEILING AND WIRED TO PANEL 'M', CIRCUIT 28. VERIFY LOCATION PRIOR TO INSTALLATION.
 - RELOCATE/RE-TERMINATE EXISTING CANOPY LIGHTING CIRCUIT TO B-23 AND RE-WIRE EXISTING CIRCUIT THRU NEW EYS SITE CONTACTORS. CLIP AND RELATE WITH LED BULBS ALL EXISTING CANOPY LIGHT FIXTURES TO BRING TO GOOD WORKING ORDER. REPAIR/REPLACE AS NECESSARY. IF WALL CANOPY LIGHTING CIRCUIT IS POWERED FROM LANDLORD'S HOUSE PANEL THEN DO NOT RELOCATE EXISTING CIRCUIT.
 - REPLACE EXISTING WALL PAK WITH NEW WALL PAK AS SCHEDULED. RELOCATE/RE-TERMINATE EXISTING EXTERIOR HALL LIGHTING CIRCUIT TO B-25 AND RE-WIRE EXISTING CIRCUIT THRU NEW EYS SITE CONTACTORS. IF WALL PAK LIGHTING CIRCUIT IS POWERED FROM LANDLORD'S HOUSE PANEL THEN DO NOT RELOCATE EXISTING CIRCUIT.

LIGHTING DEMOLITION NOTES:
 REMOVE ALL EXISTING INTERIOR LIGHTING FIXTURES, EXIT SIGNS AND EMERGENCY LIGHTING NOT SHOWN AS EXISTING TO REMAIN OR NOTED AS EXISTING TO REMAIN. REMOVE ALL ASSOCIATED WIRING AND DEVICES. FIELD COORDINATE FINAL SCOPE OF DEMOLITION WORK WITH GC PRIOR TO BEGINNING CONSTRUCTION.

- GENERAL NOTES:**
- CONTRACTOR SHALL INSTALL ADDITIONAL WIRE TIE SUPPORTS FROM THE CEILING GRID TO THE STRUCTURE ABOVE FOR SUPPORT OF THE LIGHT FIXTURES CLIPPED ON THE GRID.
 - PROVIDE DEDICATED NEUTRAL FOR EACH LIGHTING CIRCUIT..

Order **Drawings**

ENGINEER OF RECORD:
 J. CORBETT THOMASON, P.E.
 2120 DEWORTH RD EAST
 CHARLOTTE, NC 28203
 PH (704) 333-1020
 Corbett@CorbettEngineering.com



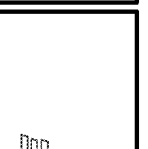
date	project	designed	drawn	checked
1/21/21	2116-08	ACT	ACT	ACT

date	project	designed	drawn	checked
1/21/21	2116-08	ACT	ACT	ACT



RRMM ARCHITECTS, PC
 Robert S. Barz, Jr., Architect
 Duane M. Harver, Architect

1317 Executive Blvd, Suite 200
 Chesapeake, VA 23320
 (757) 622-2828 / fax (757) 622-8883



DOLLAR TREE
 NORTHSIDE PLAZA DEAL #12283
 DALTON, GA
 LIGHTING PLAN

project
 drawing

sheet