

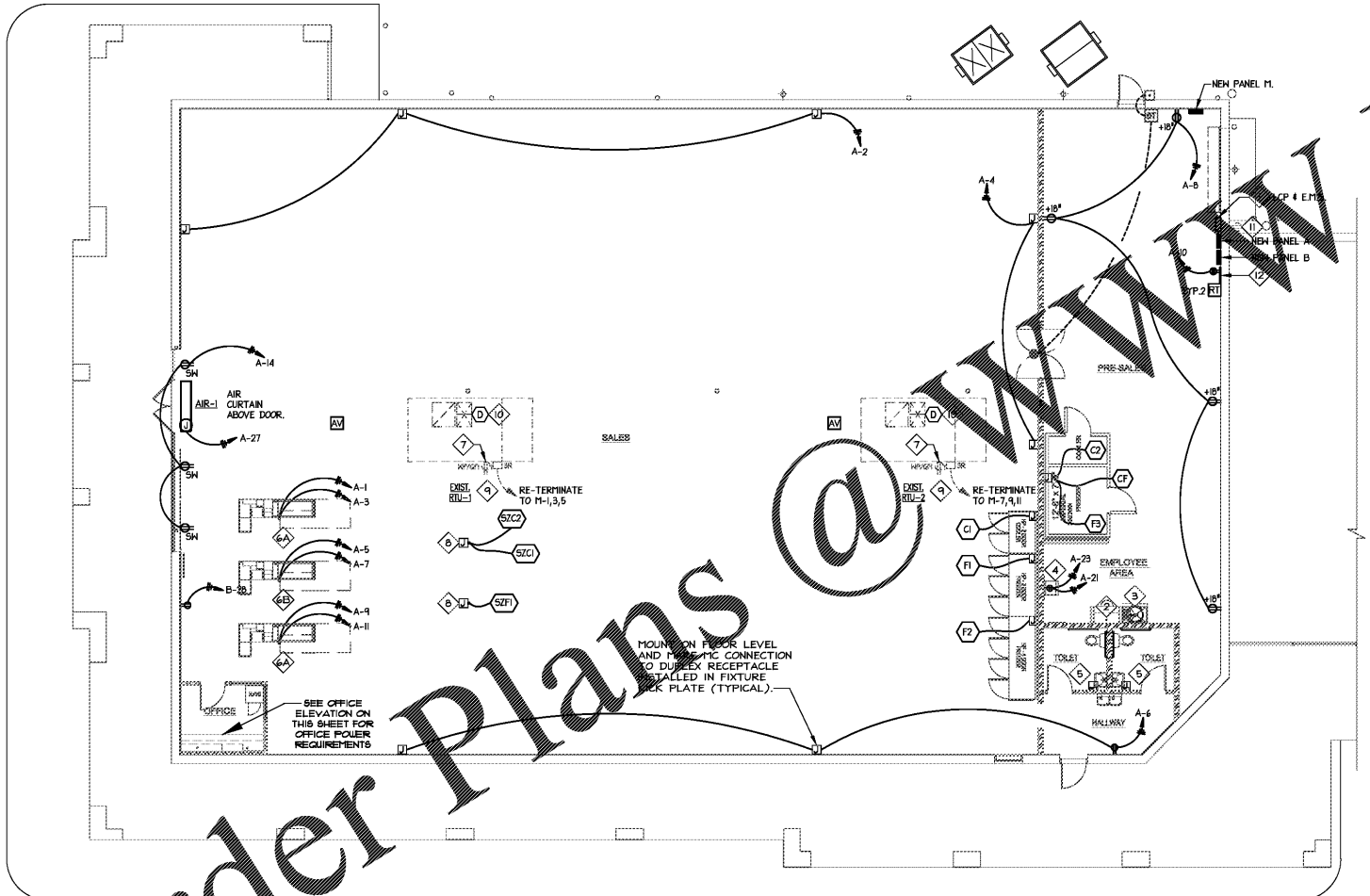
SPECIAL NOTE:
CONTRACTOR SHALL REFER TO THE TEMPERATURE SENSOR MOUNTING DETAIL ON SHEET EM-3 FOR PLACEMENT AND INSTALLATION INSTRUCTIONS PRIOR TO INSTALLING.

POWER PLAN NOTES:

- EXISTING TIMECLOCK AND CONTACTORS COMPLETE AND PROVIDE NEW EPIS PANEL LOCATED NEAR ELECTRICAL PANELS. PROVIDE NEW CIRCUITING TO B-1. CONTRACTOR SHALL REFER TO EPIS SHEETS FOR INSTRUCTION AND RESPONSIBILITIES FOR INSTALLING TENANT SUPPLIED ENERGY MANAGEMENT SYSTEM PRIOR TO BIDDING AND INSTALLATION.
- FOR EMPLOYEE DESK AREA, PROVIDE AND INSTALL 30" LONG PLUGMOLD WITH (1) 120V, 20A CIRCUIT AND A MINIMUM OF FIVE RECEPTACLES. CENTER THE PLUGMOLD, MOUNT AT 3'-2" A.F.F., AND CONNECT TO CIRCUIT A-25. PROVIDE AND INSTALL (1) SINGLE-GANG DATA BOX MOUNTED IN HORIZONTAL CONFIGURATION WITH 3/4" SUB-UP. MOUNT DATA DEVICE AT 3'-5" A.F.F.
- WATER HEATER - UNIT IS 120V, 1500W, WITH 1/2" C, (2) #12 & (1) #12 GROUND TO PANEL "A", CIRCUIT 30. PROVIDE LOCKABLE CIRCUIT BREAKER. COORDINATE ACTUAL LOCATION WITH PLUMBING.
- THE QUAD RECEPTACLE SHOWN IS ACTUALLY MADE UP OF TWO DUPLEX RECEPTACLES WITH THE TWO CIRCUITS SHOWN. MOUNT RECEPTACLE AT 18" A.F.F. LOCATE OUTLET NEXT TO LOCKERS. COORDINATE LOCATION WITH FIXTURE PLAN.
- THE ELECTRIC HAND DRYERS IN EACH TOILET ARE PROVIDED BY TENANT AS PART OF THE RESTROOM-IN-A-BOX PACKAGE AND ARE TO BE ROUGHED-IN WITH A HALL HANGER KIT AND CONNECTED BY THE ELECTRICAL CONTRACTOR VIA CIRCUITS A-16 & A-18.
- POWER POLES ARE PROVIDED BY TENANT FOR INSTALLATION BY ELECTRICAL CONTRACTOR AND SHALL INCLUDE EITHER ARRANGEMENT 'A' OR 'B' AS NOTED ON THE PLANS.
A. ONE ISOLATED DEDICATED CIRCUIT, ONE STANDARD RECEPTACLE CIRCUIT, & ONE TELEPHONE CIRCUIT.
B. ONE ISOLATED DEDICATED CIRCUIT & ONE STANDARD RECEPTACLE CIRCUIT
- EXISTING ROOFTOP SERVICE RECEPTACLE AND CIRCUITING TO REMAIN. EXTEND EXISTING CIRCUITING AS REQUIRED AND RE-TERMINATE TO A-1.
- JUNCTION BOX ABOVE CEILING FEEDING POWER POLE (POLE SUPPLIED BY TENANT) FOR SNACK ZONE COOLERS & ICE CREAM FREEZER. COORDINATE LOCATION WITH FIXTURE PLAN BEFORE ROUGH-IN.
- EXISTING PACKAGED ROOFTOP UNIT AND CIRCUITING TO REMAIN. EXTEND EXISTING CIRCUITING AS REQUIRED AND RE-TERMINATE TO PANEL "A" AND CIRCUIT NUMBER AS SHOWN ON PLANS.
- EXISTING DUCT SMOKE DETECTOR IN SUPPLY AIR DUCTS TO REMAIN. VERIFY OPERATION AND REPAIR/REPLACE AS REQUIRED TO BRING TO GOOD WORKING ORDER. PROVIDE NEW COMPATIBLE ADDRESSABLE DEVICE AND NEW CONDUIT FROM THE DETECTOR AND WIRE TO EXISTING SMOKE DETECTOR. REFER TO 4.1.1 FOR ADDITIONAL INFORMATION.
- EXISTING SMOKE DETECTOR IN SUPPLY AIR DUCTS TO REMAIN. FIELD VERIFY OPERATION AND REPAIR/REPLACE AS REQUIRED TO BRING TO GOOD WORKING ORDER. PROVIDE NEW COMPATIBLE ADDRESSABLE DEVICE AND NEW CONDUIT FROM THE DETECTOR AND WIRE TO EXISTING SMOKE DETECTOR. REFER TO 4.1.1 FOR ADDITIONAL INFORMATION.
- NEW TELEPHONE BOARD LOCATION. COORDINATE WITH LOCAL UTILITY PROVIDERS TO PROVIDE NEW TELEPHONE AND DATA SERVICES. EXTEND EXISTING TELEPHONE AND DATA SERVICES/CONDUITS AS REQUIRED TO NEW TELEPHONE BOARD LOCATION. COORDINATE REQUIREMENTS WITH LOCAL UTILITY PROVIDERS PRIOR TO BEGINNING CONSTRUCTION.

ELECTRICAL LEGEND

- EMIS: ENERGY MANAGEMENT SYSTEM
- ⊙ CEILING RECEPTACLE, 120V, 20A
- ⊙ DUPLEX RECEPTACLE, 120V, 20A
- ⊙ DUPLEX RECEPTACLE, 20A, 15V VOLT, WITH ISOLATED GROUND, HERRLE #6-59-52
- ⊙ DUPLEX RECEPTACLE, 120V, 20A, GROUND FAULT INTERRUPT CIRCUIT
- ⊙ DUPLEX RECEPTACLE, 120V, 20A, GROUND FAULT INTERRUPT CIRCUIT WITH WEATHERPROOF COVER
- ⊙ DUPLEX RECEPTACLE, 120V, 20A, ABOVE WINDOW IN WALL WITHIN 18" OF TOP OF WINDOW
- ⊙ JUNCTION BOX
- ⊙ PUSHBUTTON, MOUNT 42" AFF UNLESS OTHERWISE NOTED.
- ⊙ SIGNAL TRANSFORMER, MOUNT 5' FROM STOCKROOM
- ⊙ TELEPHONE OUTLET, PROVIDE AND INSTALL ALL NECESSARY CONDUIT, CABLE, ICE BOXES AND PLATES FROM BACKS TO CONNECTION BY TENANT'S CONTRACTOR. COORDINATE LOCATION WITH TENANT.
- ⊙ ADDRESSABLE RECEPTACLE
- ⊙ TELEPHONE RECEPTACLE, 20A, 15V VOLT, MOUNT 6" AFF.
- ⊙ BELL, 4" DIAMETER SINGLE MAGNET VIBRATING TYPE 24 VAC, 30 VA EDWARDS # 59-668. MOUNT ABOVE CEILING.
- ⊙ DUCT SMOKE DETECTOR
- ⊙ AUDIO/VISUAL DEVICE
- ⊙ REMOTE TEST STATION



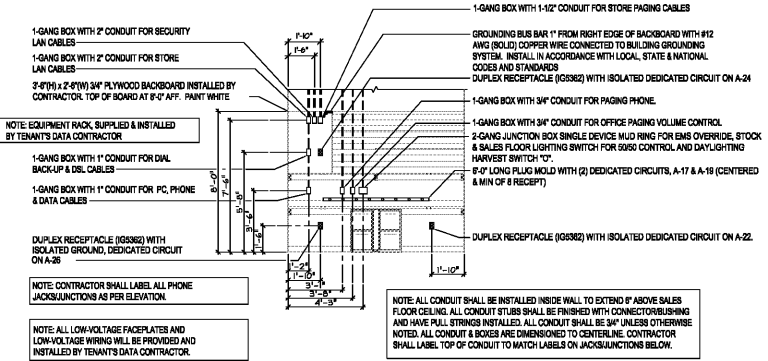
POWER DEMOLITION NOTES:
REMOVE ALL EXISTING RECEPTACLES AND POWER NOT SHOWN AS EXISTING TO REMAIN OR NOTED AS EXISTING TO REMAIN. REMOVE ALL ASSOCIATED CONDUIT, WIRING AND DEVICES. FIELD COORDINATE FINAL SCOPE OF DEMOLITION WORK WITH GC PRIOR TO BEGINNING CONSTRUCTION.

1 ELECTRICAL POWER PLAN
SCALE: 1/8"=1'-0"

POWER/WIRING INFORMATION FOR COOLER/FREEZER EQUIPMENT

DEVICE*	DISCONNECT SIZE	CONDUIT/WIRE SIZE	FEEDER PANEL	FEEDER BREAKER(S)
(C1)	JUNCTION BOX @ 18" AFF W/18" WHIP	3/4"	(3) #12 & (1) #12 GND**	B 10/2 - 20A/2P
(C2)	8"x8"x6" JB @ 12" AFF W/20" COILED WIRE	1/2"	(2) #12 & (1) #12 GND.	B 4 - 20A/1P
(F1)	JUNCTION BOX @ 18" AFF W/18" WHIP	1"	(3) #8 & (1) #12 GND.**	B 14/6 - 30A/2P
(F2)	JUNCTION BOX @ 18" AFF W/18" WHIP	1"	(3) #8 & (1) #12 GND.**	B 10/20 - 30A/2P
(F3)	8"x8"x6" JB @ 12" AFF W/20" COILED WIRE	3/4"	(2) #12 & (1) #12 GND.	B 6/3 - 30A/2P
(CF)	8"x8"x6" JB @ 12" AFF W/20" COILED WIRE	1/2"	(2) #12 & (1) #12 GND.	B 2 - 15A/1P
(B/C)	JB ABOVE CEILING W/20" COILED WIRE	3/4"	(2) #12 & (1) #12 GND.	B 22 - 20A/1P
(B/C)	JB ABOVE CEILING W/20" COILED WIRE	3/4"	(2) #12 & (1) #12 GND.	B 24 - 20A/1P
(B/C)	JB ABOVE CEILING W/20" COILED WIRE	3/4"	(2) #12 & (1) #12 GND.	B 26 - 20A/1P

* FOR WALK-IN COOLER/FREEZER LIGHTS
NOTE: ALL DIMENSIONS ARE TO THE TOP OF THE ASSOCIATED DEVICE. FINAL TERMINATIONS TO COOLER & FREEZER EQUIPMENT IS BY THE EQUIPMENT INSTALLER.
** INCLUDES: (2) HOT, (1) NEUTRAL, & (1) GROUND



OFFICE ELEVATION - ELECTRICAL & DATA
SCALE: 1/4"=1'-0"

ENGINEER OF RECORD:
J. CORBETT THOMAS, P.E.
2120 DEWORTH RD EAST
CHARLOTTE, NC 28203
PH (704) 333-1020
Corbett@CorbettEngineering.com

1/5/21

description
by
date
mark
revisions

10/21
21/08
ACT
ACT
ACT

date
project
designed
drawn
checked

RRMM
ARCHITECTS, PC
Robert S. Barz, Jr., Architect
Dustin M. Harver, Architect
1317 Executive Blvd, Suite 200
Chesapeake, VA 23320
(757) 622-2828 / fax (757) 622-8883

DOLLAR TREE
NORTHSIDE PLAZA DEAL #12293
DALTON, GA
POWER PLAN

project
drawing

sheet
E-1