

**MECHANICAL DUCTWORK AND INSULATION NOTES**

DUCTWORK SHALL BE GALVANIZED SHEET METAL FABRICATED AND INSTALLED IN ACCORDANCE WITH ASHRAE AND SMACNA RECOMMENDATIONS. FIBERGLASS DUCTBOARD SHALL NOT BE USED AND WILL NOT BE ACCEPTED.

DUCTWORK SHALL BE INSULATED AS FOLLOWS:  
 ALL CONCEALED DUCTWORK ABOVE LAY-IN CEILING SHALL BE WRAPPED WITH 2" FIBERGLASS INSULATION.

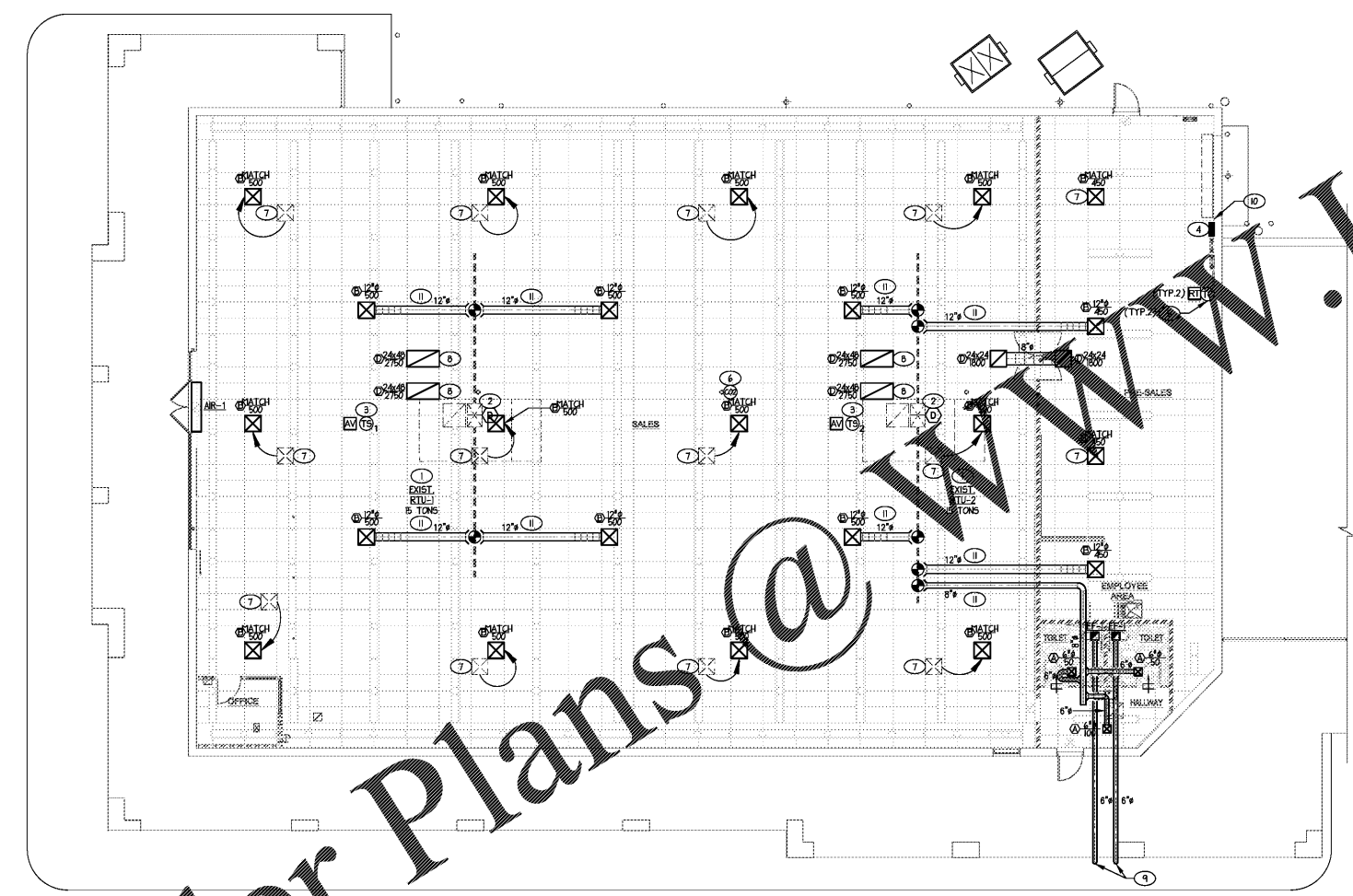
INTERNAL INSULATION SHALL BE MINIMUM 1" THICK 1-1/2 PCF FIBERGLASS, NEOPRENE COATED, AND ADHERED WITH AN APPROVED ADHESIVE WITH 100% COVERAGE AND STICK CLIPS ON 12" CENTERS. INTERNALLY LINED INSULATION SHALL MEET BACTERIOLOGICAL STANDARD ASTM C 665. SHEET METAL SIZES SHALL BE INCREASED ACCORDINGLY TO ALLOW FOR DUCT LINER.

**MECHANICAL PLAN KEYED NOTES**

- 1 EXISTING PACKAGED ROOFTOP UNIT WITH GAS HEAT TO REMAIN. REPAIR/REPLACE DAMAGED CONDENSATE TRAP AND CONDENSATE PIPING AS REQUIRED. EXISTING CONTROLS SHALL BE REPLACED. PROVIDE COMPLETE TEST AND BALANCE PER AIR FLOWS AS SHOWN ON PLANS. BALANCE OUTSIDE AIR CFM TO QUANTITY AS SHOWN IN VENTILATION CALCULATIONS.
- 2 EXISTING DUCT SMOKE DETECTOR IN SUPPLY AIR DUCT TO REMAIN. VERIFY OPERATION AND REPAIR/REPLACE AS REQUIRED TO BRING TO GOOD WORKING ORDER. PROVIDE NEW COMPATIBLE AUDIO/VISUAL DEVICE AND NEW COMPATIBLE REMOTE TEST STATION AND WIRE TO EXISTING DUCT SMOKE DETECTOR. REFER TO ELECTRICAL PLANS FOR ADDITIONAL INFORMATION.
- 3 REMOVE EXISTING THERMOSTAT AND INSTALL REMOTE SPACE TEMPERATURE SENSOR FURNISHED WITH EMS AND INSTALLED BY CONTRACTOR. SEE EM SHEETS FOR INSTALLATION DETAILS. FOR MOUNTING OF REMOTE SPACE TEMPERATURE SENSOR, REFER TO EMS CEILING DOWNDR.
- 4 ENERGY MANAGEMENT SYSTEM (EMS). EMS SHALL BE SUPPLIED BY DOLLAR TREE AND INSTALLED BY CONTRACTOR. SEE EM SHEETS FOR INSTALLATION DETAILS AND RESPONSIBILITIES.
- 5 REMOVE EXISTING THERMOSTAT AND INSTALL HVAC UNIT CONTROLLER FURNISHED WITH EMS AND INSTALLED BY CONTRACTOR. MOUNT HVAC UNIT CONTROLLER NEXT TO TELEPHONE BOARD. SEE EM SHEETS FOR INSTALLATION DETAILS.
- 6 CO2 SENSOR FURNISHED WITH EMS AND INSTALLED BY CONTRACTOR. MOUNT CO2 SENSOR TO COLUMN. SEE EM SHEETS FOR INSTALLATION DETAILS AND DEMAND CONTROLLED VENTILATION SETUP INSTRUCTIONS. FIELD COORDINATE FINAL LOCATION WITH DT PROJECT MANAGER AND SITE SPECIFIC FIXTURE PLAN PRIOR TO BEGINNING CONSTRUCTION.
- 7 EXISTING SUPPLY DIFFUSER TO BE RELOCATED AND REPLACED WITH NEW SUPPLY DIFFUSER AS SCHEDULED. MATCH EXISTING DIFFUSER NECK SIZE. BALANCE TO AIR QUANTITY AS SHOWN ON PLANS. EXTEND/MODIFY EXISTING DUCTWORK AS REQUIRED FOR RECONNECTION TO NEW SUPPLY DIFFUSER. EXCESS FLEXIBLE DUCTWORK SHALL BE TRIMMED.
- 8 EXISTING RETURN GRILLE TO BE RELOCATED AND REPLACED WITH NEW RETURN GRILLE AS SCHEDULED. BALANCE TO AIR QUANTITY AS SHOWN ON PLANS. EXTEND/MODIFY EXISTING DUCTWORK AS REQUIRED FOR RECONNECTION TO NEW RETURN GRILLE.
- 9 6" EXHAUST DUCT OUT FROM EXHAUST FAN. TERMINATE OVER TOP OF SOFFIT VENT.
- 10 REMOVE EXISTING WALL MOUNTED ELECTRIC UNIT HEATER.
- 11 FIELD ROUTE AND CONNECT NEW SUPPLY DUCTWORK INTO EXISTING SUPPLY TRUNK DUCTWORK AS SHOWN.

**MECHANICAL LEGEND**

- 18x14 RECTANGULAR DUCT
- 6x6 ROUND METAL DUCT
- FLEX/RIGID ROUND DUCT
- ELBOW WITH TURNING VANES
- VOLUME DAMPER
- SUPPLY TAP WITH VOLUME DAMPER
- SUPPLY TAP
- SUPPLY DIFFUSER/GRILLE
- RETURN REGISTER/GRILLE
- EXHAUST REGISTER/GRILLE
- VERTICAL SUPPLY DUCT
- VERTICAL RETURN DUCT
- VERTICAL EXHAUST DUCT
- CEILING DIFFUSER/GRILLE
- MECHANICAL EQUIPMENT TYPE XX
- CEILING EXHAUST FAN
- HVAC UNIT CONTROLLER
- REMOTE SPACE TEMPERATURE SENSOR
- DUCT SMOKE DETECTOR. COORDINATE INSTALLATION RESPONSIBILITIES WITH ALL CONTRACTORS.
- CO2 SENSOR FURNISHED WITH EMS
- LOUVERED DOOR (SEE ARCHITECTURAL DRAWINGS)
- 1" DOOR UNDER CUT
- U.L. FIRE DAMPER
- AUDIO/VISUAL DEVICE TIED TO DUCT SMOKE DETECTOR. COORDINATE INSTALLATION RESPONSIBILITIES WITH ALL CONTRACTORS. RECESS IN CEILING GRID IN SALES AREA. SURFACE MOUNT TO BOTTOM OF JOISTS IN PRE-SALES AREA.
- POINT OF CONNECTION TO EXISTING.
- REMOTE TEST STATION WIRED TO DUCT SMOKE DETECTOR. COORDINATE INSTALLATION RESPONSIBILITIES WITH ALL CONTRACTORS.



1 MECHANICAL FLOOR PLAN  
 1/8"=1'-0"

Order Plans @ WWW.LDILine.com

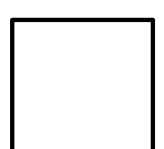
ENGINEER OF RECORD:  
 J. CORBETT THOMASON, P.E.  
 2120 DILWORTH RD EAST  
 CHARLOTTE, NC 28203  
 PH (704) 333-1020  
 Contact@CorbettEngineering.com



date	by	description

date	project	designed	drawn	checked
1/21/21	2116a	ACT	ACT	ACT

**RRMM ARCHITECTS, PC**  
 Robert S. Barz, Jr., Architect  
 Duane M. Harver, Architect  
 1317 Executive Blvd, Suite 200  
 Chesapeake, VA 23320  
 (757) 622-2828 / fax (757) 622-8883



**DOLLAR TREE**  
 NORTHSIDE PLAZA DEAL #12283  
 DALTON, GA  
 MECHANICAL UFTT PLAN