

HVAC GENERAL NOTES	
1. THE CONTRACTOR SHALL PROVIDE ALL MATERIAL AND EQUIPMENT IN STRICT ACCORDANCE WITH APPLICABLE CODES AND STANDARDS, AND PER MANUFACTURER'S DIRECTIONS.	16. AS REQUIRED BY LOCAL CODES, CONTRACTOR SHALL PROVIDE UL LISTED FIRE DAMPERS WHERE REQUIRED FOR FIRE PROTECTION REQUIREMENTS OF THE HVAC SYSTEM & THE UL ASSEMBLY.
2. THE CONTRACTOR SHALL SECURE AND PAY FOR ALL NECESSARY PERMITS, LICENSE, INSPECTIONS, APPROVALS, AND FEES.	17. PROVIDE 1 YEAR WARRANTY ON ALL EQUIPMENT AND 5 YEAR WARRANTY ON ALL COMPRESSORS.
3. THE CONTRACTOR SHALL COORDINATE HIS WORK WITH ALL OTHER TRADES BEFORE INSTALLATION OF ANY MATERIALS OR EQUIPMENT.	18. ALL ACTUATORS ON MOTORIZED DAMPERS, SMOKE DAMPERS, AND FIRE-SMOKE DAMPERS SHALL BE LOW VOLTAGE UNLESS OTHERWISE NOTED.
4. THESE DRAWINGS ARE DIAGNOSTIC AND SHOW GENERAL LOCATION AND ARRANGEMENT OF ALL MATERIALS AND EQUIPMENT. THE DRAWINGS SHALL BE FOLLOWED AS CLOSELY AS BUILDING CONSTRUCTION AND ALL OTHER WORK WILL PERMIT.	19. REFER TO APPENDIX B FOR SITE SPECIFIC CLASSIFICATION. A COMPLETE SYSTEM OF SEISMIC RESTRAINTS SHALL BE DESIGNED BY MASON INDUSTRIES (OR EQUAL) AND SEALED BY THEIR REGISTERED ENGINEER AND INSTALLED BY THIS CONTRACTOR AS REQUIRED BY APPLICABLE CODES FOR THE LOCALITY OF THIS PROJECT. SEISMIC RESTRAINTS FOR SEISMIC CLASSES D, E, AND F SHALL BE SUBMITTED TO THE DESIGN PROFESSIONAL FOR REVIEW PRIOR TO INSTALLATION.
5. DO NOT SCALE DRAWINGS FOR MEASUREMENTS.	20. ALL MAIN DUCTWORK SHALL BE GALVANIZED SHEET METAL CONSTRUCTED IN ACCORDANCE WITH SMAMA STANDARDS. RUNOUTS (CONCEALED ABOVE CEILINGS) FROM MAIN BRANCH DUCTS MAY BE FLEXIBLE DUCT CONFORMING TO THE REQUIREMENTS OF UL 181 FOR CLASS 1 FLEXIBLE AIR DUCTS. MAXIMUM 12'-0" FLEX PER RUNOUT.
6. ALL DUCT DIMENSIONS SHOWN ARE INTERIOR DUCT DIMENSIONS.	21. THE CONTRACTOR SHALL PROVIDE LOW VOLTAGE CONTROL LINES TO THE PACKAGE UNIT. COORDINATE ROUTING AND INSTALLATION.
7. ALL PENETRATIONS THROUGH EXTERIOR WALLS SHALL BE FLASHED AND COUNTERFLASHED IN A WATERPROOF MANNER. (COLOR TO MATCH EXTERIOR).	22. CONTRACTOR SHALL VERIFY LOCATION OF ALL PENETRATIONS FOR WALL CAPS WITH ARCHITECT & OWNER PRIOR TO INSTALLATION.
8. SEAL ALL PENETRATIONS OF RATED WALLS WITH FIRE DAMPER, SEALANT MATERIAL APPROVED BY LOCAL CODES.	23. CONTRACTOR SHALL PAINT ALL VENT CAPS. CONFIRM COLOR WITH ARCHITECT & OWNER PRIOR TO INSTALLATION.
9. ALL SUSPENDED MATERIALS AND EQUIPMENT SHALL BE INDIVIDUALLY SUPPORTED FROM THE BUILDING STRUCTURE. DO NOT SUSPEND ITEMS FROM THE CEILING OR ITS SUPPORT SYSTEM.	24. CONTRACTOR RESPONSIBLE FOR ALL CUTTING AND PATCHING OF WALLS AND FLOORS FOR MECHANICAL EQUIPMENT.
10. INSTALL ALL CONTROL DEVICES, INCLUDING THERMOSTATS AND SWITCHES, 4'-0" ABOVE FINISHED FLOOR. PROVIDE THE REQUIRED DEVICE(S) FOR ALL SYSTEMS WHETHER LOCATED ON THE PLANS OR NOT.	
11. LOCATE CEILING DIFFUSERS IN ACCORDANCE WITH ARCHITECTURAL REFLECTED CEILING PLANS (IF PROVIDED).	
12. PROVIDE MANUFACTURER'S RECOMMENDED CLEARANCES AROUND MECHANICAL UNITS FOR MAINTENANCE AND FILTER REMOVAL.	
13. ALL PIPING AND DUCTWORK LOCATIONS SHALL BE COORDINATED WITH WORK UNDER OTHER DIVISIONS OF THE SPECIFICATIONS, TO AVOID INTERFERENCE.	
14. REFER TO MECHANICAL DUCTWORK AND INSULATION NOTES ON MECHANICAL FLOOR PLAN FOR DUCTWORK INSULATION REQUIREMENTS.	
15. CERTIFIED TEST AND BALANCE CONTRACTOR SHALL BALANCE SYSTEM TO AIR QUANTITIES INDICATED ON PLANS AND PROVIDE OWNER'S REPRESENTATIVE AND DT PROJECT MANAGER WITH COMPLETE BALANCE REPORT. IF BALANCING DAMPERS ARE NOT PROVIDED IN RETURN DUCTWORK, CONTRACTOR SHALL BALANCE SUPPLY SIDE TO AIR QUANTITIES INDICATED ON PLANS AND SHALL BALANCE OUTSIDE AIR AND RETURN AIR FLOWS AT THE AIR HANDLER TO AIR QUANTITIES INDICATED IN THE SCHEDULE. PROVIDE NEW AIR FILTERS FOR EACH UNIT.	

UNIT NO.	PACKAGED DX COOLING / GAS HEATING ROOFTOP UNIT SCHEDULE														HEIGHT LBS			
	SUPPLY - FAN DATA				HEATING CAPACITY				COOLING CAPACITY				ELECTRICAL DATA			CONTROL SCHEME	MANUFACTURER & MODEL	NOTES
	TOTAL CFM	O/A CFM	MIN.EXT. S.P. (IN. WG)	FAN RPM	MOTOR H.P.	INPUT MBH	OUTPUT MBH	EFF. %	TOTAL MBH	SENSIBLE MBH	SEER EER ISEER	VOLT/PH	MCA	MAX FUSE				
EXIST. RTU-1 (6 TONS)	5500	750															EXISTING TO REMAIN	
EXIST. RTU-2 (8 TONS)	5500	700															EXISTING TO REMAIN	

**NOTE TO MEP CONTRACTORS**

- RUN ALL ELECTRICAL CONDUITS, PLUMBING PIPING SO AS NOT TO INTERFERE WITH STORE FIXTURE EQUIPMENT LAYOUTS, OR ANY OTHER DOLLAR TREE EQUIPMENT.
- MEP CONTRACTORS TO ROUTE ALL CONDUITS, PLUMBING PIPING TIGHT TO STRUCTURE AND PERPENDICULAR TO WALL IN AN ORDERLY MANNER.

FAN SCHEDULE											
UNIT NO.	SERVICE	AREA SERVED	CFM	S.P.	RPM	TYPE & ARRANGEMENT	WATTS & VOLTAGE	MANUFACTURER & MODEL NO.	DRIVE	CONTROL SCHEME	NOTES
EF-1	EXHAUST	RESTROOMS	75 MIN.	0.25"	960	CEILING	19 WATTS 120/19	GREENHECK SP-A10	DIRECT	A	1,2,3,4,5

NOTES:  
 1. INTEGRAL BACKDRAFT DAMPER  
 2. INTEGRAL DISCONNECT SWITCH  
 3. SPEED CONTROLLER LOCATED ABOVE CEILING NEAR FAN  
 4. MODEL RDC - ROUND DUCT CONNECTOR WITH DAMPER

CONTROL OPTIONS:  
 A. CONTROL W/ ROOM LIGHTS

DIFFUSER SCHEDULE											
SYMBOL	CFM	NECK SIZE	MODULE SIZE	FRAME TYPE	PATTERN	DAMPER	MATERIAL	SERVICE	FINISH	MANUFACTURER & MODEL NO.	NOTES
(A)	SEE PLANS	SEE PLANS	12x12	SURFACE	4-HAY	YES	ALUMINUM	SUPPLY	WHITE	METALAIR 5700	I
(B)	SEE PLANS	SEE PLANS	24x24	LAY-IN	4-HAY	YES	ALUMINUM	SUPPLY	WHITE	METALAIR 5700	I
(C)	SEE PLANS	SEE PLANS	SEE PLANS	SURFACE	DOUBLE DEFLECTION	YES	ALUMINUM	SUPPLY	WHITE	METALAIR V4004D	I
(D)	SEE PLANS	SEE PLANS	SEE PLANS	LAY-IN	NA	NO	ALUMINUM	RETURN	WHITE	METALAIR GCI	I
(E)	SEE PLANS	SEE PLANS	SEE PLANS	SURFACE	-	NO	ALUMINUM	TRANSFER	WHITE	METALAIR RH	I
(F)	SEE PLANS	SEE PLANS	SEE PLANS	DOOR	-	NO	ALUMINUM	TRANSFER	WHITE	METALAIR DG DF	I

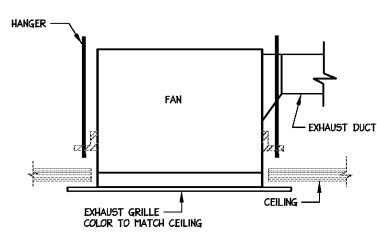
NOTES:  
 1. DIFFUSER DESIGNATIONS ON PLANS AS FOLLOWS:  
 DIFFUSER OR NECK SIZE:  $\Delta$  8x4  
 AIR QUANTITY: 75  
 DIFFUSER TYPE AS NOTED ABOVE

**NOTE: 120V-1PH**

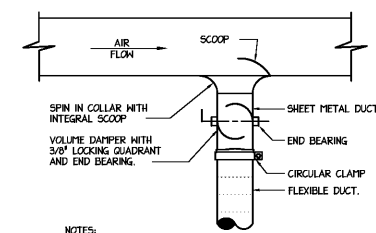
AIR CURTAIN SCHEDULE										
MARK	LOCATION	CFM	LENGTH	VOLTAGE/ PHASE	MOTOR HP	HEAT CAPACITY	SPS/MSCP	HEIGHT	MANUFACTURER & MODEL NO.	NOTES
AIR-1	FRONT ENTRY	1960	72'	120V/1PH	2 @ 1/4HP	NA	4.5 X 2	94 LBS	BERREDAIRE EVE-Z-72	2 3 4 5 6 7 8

NOTES:  
 1. MEETS IECC BUILDING CODE WHICH ALLOWS APCA CERTIFIED AIR CURTAIN AS AN ALTERNATIVE TO GLASS DOORS.  
 2. PROVIDE WITH MAGNETIC DOOR SWITCH FOR ACTIVATION. ONE PER EACH DOOR FOR TOTAL QUANTITY TWO.  
 3. PROVIDE WITH 24V TRANSFORMER AND BUILT-IN TIME DELAY RELAY.  
 4. PROVIDE WITH REMOTE MOUNTED VARIABLE SPEED SWITCH.  
 5. PROVIDE UNIT MOUNTED NON-FUSED DISCONNECT SWITCH.  
 6. PROVIDE CLEANABLE MESH FILTERS.  
 7. FINISH SHALL BE WHITE.  
 8. MOUNT BOTTOM OF AIR CURTAIN 2" ABOVE JAMB DOOR. REFER TO MANUFACTURER'S RECOMMENDATIONS/INSTALLATION INSTRUCTIONS.

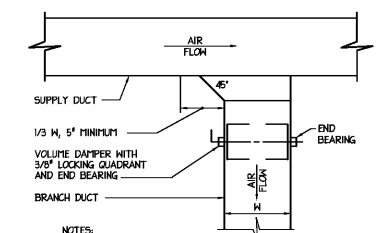
VENTILATION CALCULATIONS	
CALCULATIONS BASED ON THE 2015 INTERNATIONAL MECHANICAL CODE TABLE 403.3 WITH CORRECTIONS	
RTU-1	SERVING SALES FLOOR SALES FLOOR (SUPERMARKET) = (4941 SQFT X 0.06 CFM/SQFT) + (410 SQFT X 8 PERSON/1000 SF X 7.5 CFM/PERSON) = 978 CFM TOTAL = 978 CFM / 0.8 ZONE EFFECTIVENESS = 741 CFM 750 CFM OUTSIDE AIR SHALL BE PROVIDED FOR RTU-1.
RTU-2	SERVING SALES FLOOR, PRE-SALES AND HALLS LES FLOOR (SUPERMARKET) = (3005 SQFT X 0.06 CFM/SQFT) + (303 SQFT X 8 PERSON/1000 SF X 7.5 CFM/PERSON) = 618 CFM PRE-SALES (RECEIVING) = (375 SQFT) X (0.02 CFM/SQFT) = 7.5 CFM HALL (CORRIDOR) = (100 SQFT) X (0.06 CFM/SQFT) = 6 CFM TOTAL = 648 CFM / 0.8 ZONE EFFECTIVENESS = 679 CFM 700 CFM OUTSIDE AIR SHALL BE PROVIDED FOR RTU-2



**2 EXHAUST FAN DETAIL**  
NO SCALE



**3 BRANCH TAKEOFF TO SINGLE OUTLET**  
NO SCALE



**4 BRANCH TAKEOFF**  
NO SCALE

Order Plans @ WWW.WJ.DILLING.COM

ENGINEER OF RECORD:  
 J. CORRETT THOMAS, P.E.  
 2120 DILWORTH RD EAST  
 CHARLOTTE, NC 28203  
 PH (704) 333-1020  
 Corbett@CorbettEngineering.com

1/5/21

date	project	designed	drawn	checked	description
1/20/21	2118-08	ACT	ACT	ACT	

**RRMM ARCHITECTS, PC**  
 Robert S. Barz, Jr., Architect  
 Duane M. Harver, Architect

1317 Executive Blvd, Suite 200  
 Chesapeake, VA 23320  
 (757) 622-2828 / fax (757) 622-8883

**DOLLAR TREE**  
 NORTHSIDE PLAZA DEAL #12283  
 DALTON, GA  
 MECHANICAL COVER SHEET

project drawing sheet

**M-1**