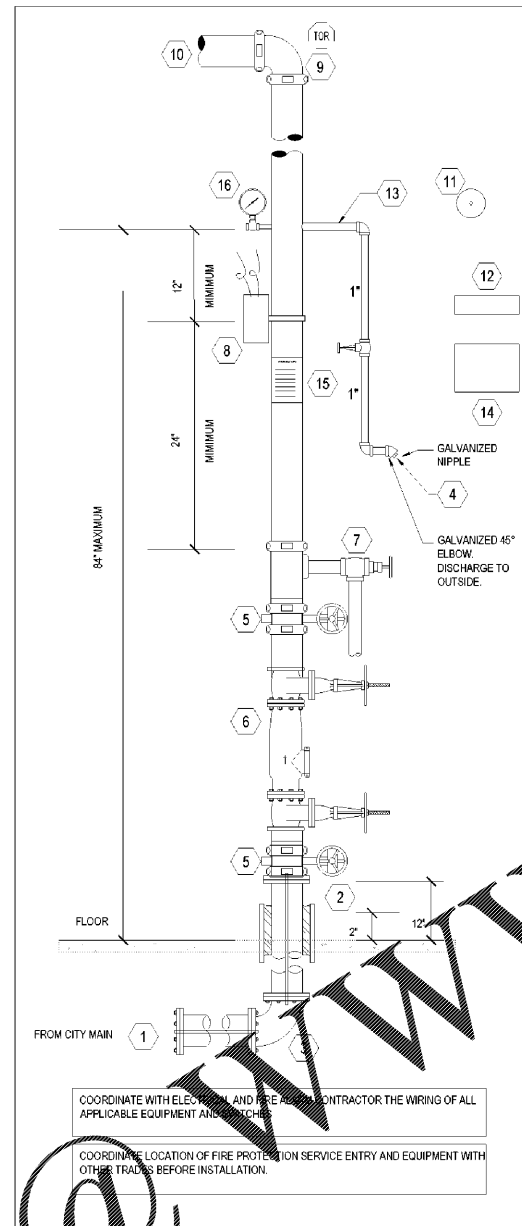


2 Dry Pipe Sprinkler Riser Elevation
Scale: None

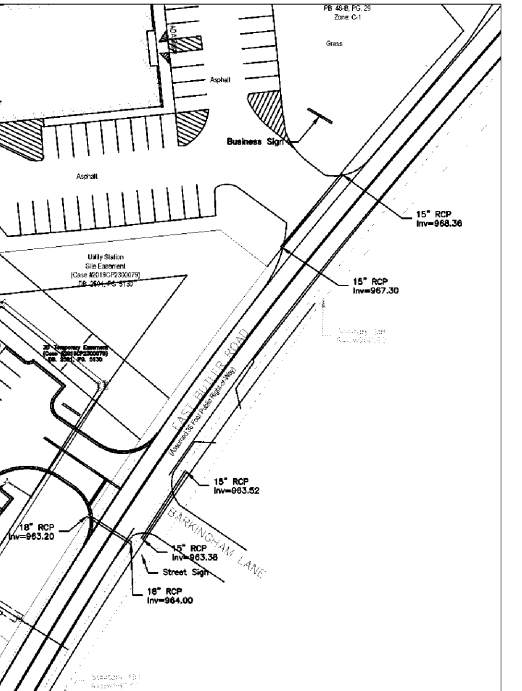
FIRE SPRINKLER DRY-PIPE RISER DETAIL

ITEM #	DESCRIPTION
1	6" ELECTRIC ALARM BELL - NOT USED
2	HIGH/LOW AIR PRESSURE SUPERVISORY SWITCH
3	2 1/2" TYCO DRY PIPE VALVE
4	2 1/2" GROOVED BUTTERFLY VALVE W/ BUILT-IN TAMPER
5	1 1/4" ANGLE VALVE (MAIN DRAIN LINE)
6	GAST AIR COMPRESSOR MOUNTED VERTICALLY TO RISER (WITH RUBBER VIBRATION DAMPER AT MOUNT)
7	2 1/2" ADJUSTABLE PIPE STAND
8	2 1/2" PIPE CLAMP (SECURED TO EXTERIOR WALL)
9	1" AUXILIARY DRAIN VALVE
10	ALARM PRESSURE SWITCH

- RISER GENERAL NOTES:**
- ALL OUTSIDE STEEL PIPING SHALL BE GALVANIZED WITH GALVANIZED, OR FACTORY COATED, FITTINGS.
 - ALL GROOVED COUPLINGS SHALL BE OF THE "RIGID" TYPE.
 - ALL DIMENSIONS SHOWN ARE CENTER-TO-CENTER DIMENSIONS AND SHALL BE FIELD VERIFIED BEFORE FABRICATION AND INSTALLATION.
 - ALL ELECTRICAL WIRING SHALL BE PERFORMED BY OTHERS.
 - PIPE DIMENSIONS SHOWN ARE FOR THE VALVES AND DEVICES SPECIFIED USING STANDARD GROOVED FITTINGS.



4 Wet Pipe Sprinkler Riser Elevation
Scale: None



1 Fire Site Plan
Scale: None

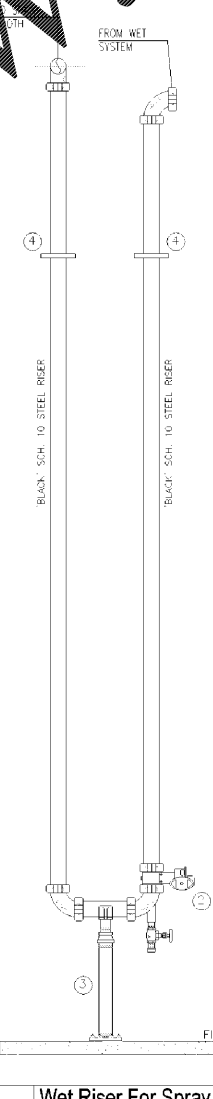
FIRE SPRINKLER RISER TAG NOTES

- UNDERGROUND SUPPLY, 36" MINIMUM BURY BELOW GRADE TO 1'-0" A.F.F. FOR CONTINUATION REFERENCE CIVIL PLANS.
- SPIGOT PIECE TO THE RISER UP TO 1'-0" A.F.F.
- 90° MECHANICAL JOINT ELBOW.
- SMOOTH BORE CORROSION RESISTANT OUTLET GIVING FLOW EQUIVALENT TO ONE SPRINKLER
- GROOVED BUTTERFLY VALVE WITH BUILT-IN TAMPER SWITCH.
- BACKFLOW PREVENTER
- MAIN DRAIN VALVE TO DISCHARGE TO THE OUTSIDE, MINIMUM 2.5'
- WATER FLOW SWITCH.
- GROOVED 90° ELBOW.
- BULK MAIN TO THE SPRINKLER SYSTEM.
- ELECTRIC ALARM BELL MOUNTED ON THE OUTSIDE WALL.
- SPARE SPRINKLER HEAD CABINET, QUANTITY OF SPRINKLERS PER NFPA 13.
- INSPECTOR'S TEST.
- CALL 911 SIGN
- HYDRAULIC PLACARD.
- PRESSURE GAUGE.

5 Inspector's Test Connection Detail
Scale: None

FIRE SPRINKLER PAINT BOOTH RISER DETAIL

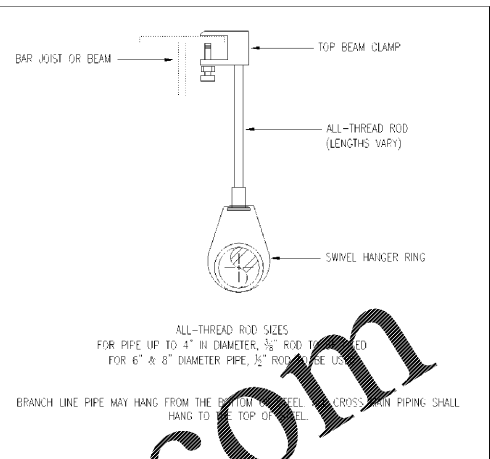
ITEM #	DESCRIPTION
1	NOT USED
2	2 1/2" GROOVED BUTTERFLY VALVE W/ BUILT-IN TAMPER
3	2 1/2" ADJUSTABLE PIPE STAND
4	2 1/2" PIPE CLAMP (SECURED TO SPRAY BOOTH WALL)



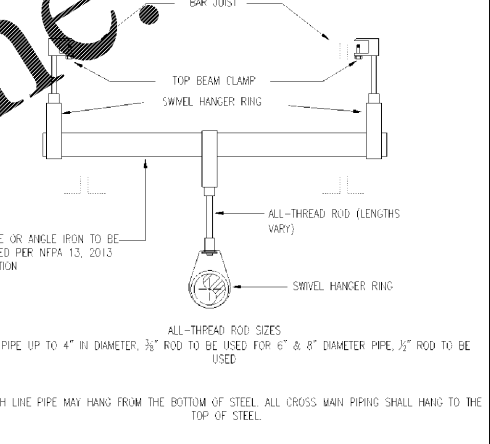
2 Wet Riser For Spray Booth
Scale: None

RISER GENERAL NOTES:

- ALL OUTSIDE STEEL PIPING SHALL BE GALVANIZED WITH GALVANIZED, OR FACTORY COATED, FITTINGS.
- ALL GROOVED COUPLINGS SHALL BE OF THE "RIGID" TYPE.
- ALL DIMENSIONS SHOWN ARE CENTER-TO-CENTER DIMENSIONS AND SHALL BE FIELD VERIFIED BEFORE FABRICATION AND INSTALLATION.
- ALL ELECTRICAL WIRING SHALL BE PERFORMED BY OTHERS.
- PIPE DIMENSIONS SHOWN ARE FOR THE VALVES AND DEVICES SPECIFIED USING STANDARD GROOVED FITTINGS.



7 Bar Joist/Beam Hanger Detail
Scale: None



6 Trapeze Hanger Detail
Scale: None

STEEL PIPE HANGER LOCATION DETAIL			
PIPE SIZE	A	B	C
1"	3'-0" MAX	12'-0" MAX	3" MIN
1 1/4"	4'-0" MAX	12'-0" MAX	3" MIN
1 1/2" - 8"	5'-0" MAX	12'-0" MAX	3" MIN

THE UNSUPPORTED LENGTH BETWEEN THE END SPRINKLER AND THE LAST HANGER ON THE LINE SHALL NOT EXCEED 36" FOR 1" PIPE, 48" FOR 1 1/4" PIPE AND 60" FOR 1 1/2" PIPE OR LARGER. THE CUMULATIVE HORIZONTAL LENGTH OF AN UNSUPPORTED ARMOR TO A SPRINKLER, SPRINKLER DROP, OR SPRIG-UP SHALL NOT EXCEED 24".

3 Pipe Hanger Schedule
Scale: None

PROJECT NO.	220087
DATE	07/08/2020
DRAWN	PO
CHECKED	RV
RELEASE	
PERMIT COMMENTS RESPONSE	(09/22/2020)

BID SET 10/28/2020

1925 Prospect Ave.
Orlando, FL 32814
P (407) 661-9100
F (407) 661-9101
www.c-p.com
Florida Corporate Certificate #AA 000026

Architects & Planners
Orlando • Philadelphia

CLIENT NAME
Cross Development
4336 Macaulay Ridge
Carrollton, TX 75010

PROJECT NAME
Caliber Collision Five Forks (161)
1215 East Butler Rd
Greenville, SC 29607

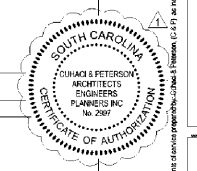
SHEET TITLE
Fire Protection Details

220087
07/08/2020
PO
RV

FP1.0

Order Plans

WWW.LDILine.com



PROJECT NO. 220087 DATE 07/08/2020 DRAWN PO CHECKED RV
 RELEASE PERMIT COMMENTS RESPONSE (09/22/2020)
 PROJECT NAME Caliber Collision Five Forks (161) 1215 East Butler Rd Greenville, SC 29607
 CLIENT NAME Cross Development 4336 Macaulay Ridge Carrollton, TX 75010
 ARCHITECTS & PLANNERS ORLANDO • PHILADELPHIA
 ARCHITECTS ENGINEERS PLANNERS
 CHARLES & PETERSON ARCHITECTS & PLANNERS INC. LICENSE NO. 2801
 SOUTH CAROLINA PROFESSIONAL ENGINEER'S SEAL
 STATE OF SOUTH CAROLINA
 CHARLES & PETERSON ARCHITECTS & PLANNERS INC. LICENSE NO. 2801
 PROFESSIONAL ENGINEER'S SEAL
 STATE OF SOUTH CAROLINA
 PROJECT NO. 220087 DATE 07/08/2020 DRAWN PO CHECKED RV
 RELEASE PERMIT COMMENTS RESPONSE (09/22/2020)