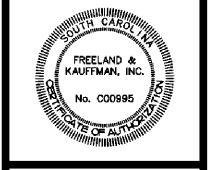


REVISIONS	BY

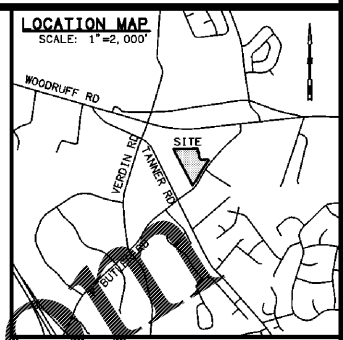
**FREELAND and KAUFFMAN, INC.**  
 Engineers & Landscape Architects  
 209 West Stone Avenue  
 Greenville, South Carolina 29609  
 864-239-5497

**NO SET  
 NOT FOR  
 CONSTRUCTION**



**CALIBER COLLISION**  
 1233 E. BUTLER ROAD  
 GREENVILLE, SC 29607  
 CROSS DEVELOPMENT CC FIVE FORKS, LLC.  
 4336 MARSH RIDGE  
 CARROLLTON, TX 76010  
 TEL. (214) 614-8252

DRAWN	EAC
CHECKED	TMB
DATE	01/04/2021
SCALE	
DRAWING	R2



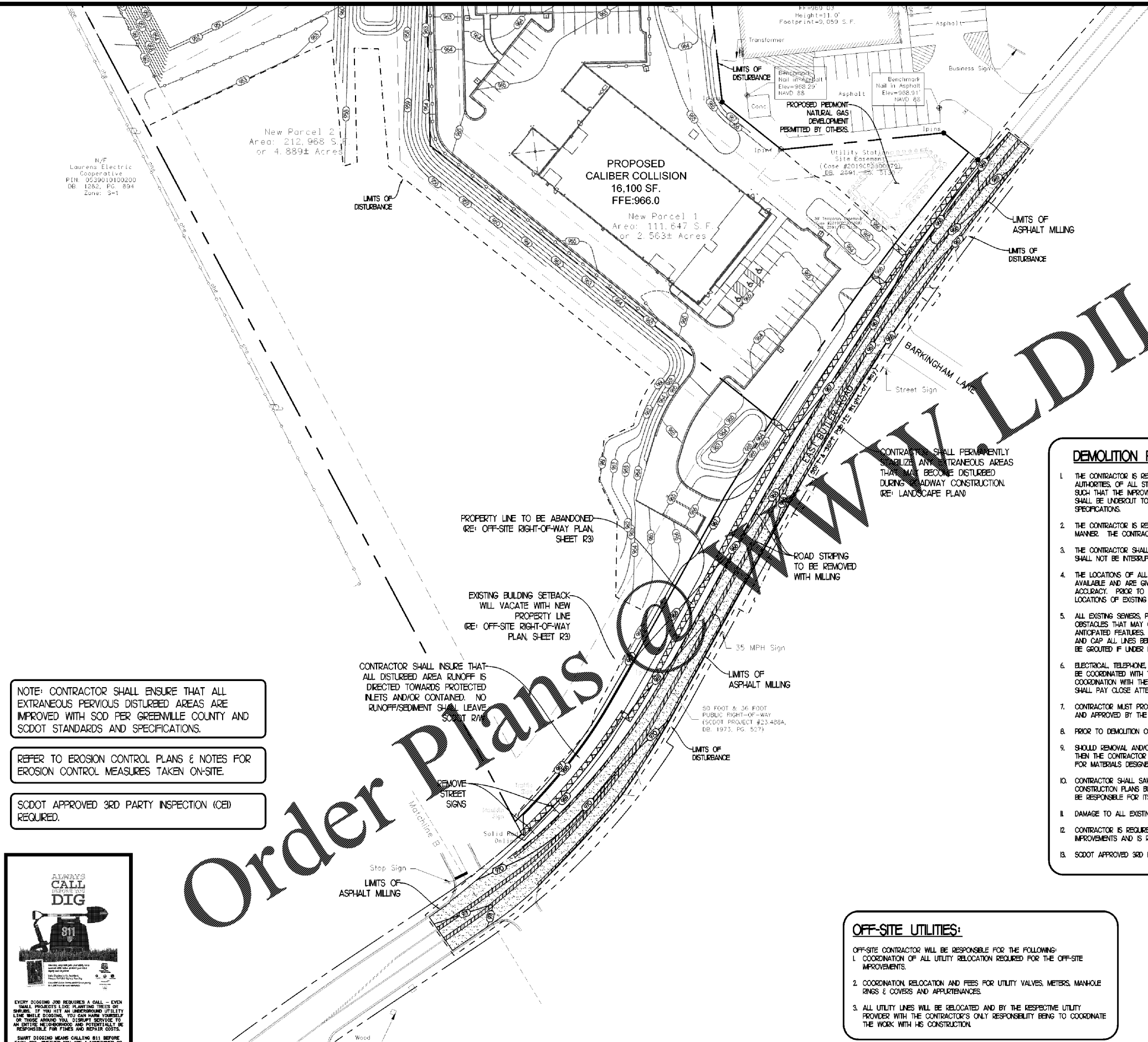
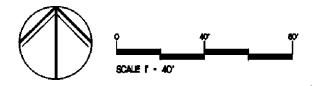
**LEGEND**

SYMBOL	DESCRIPTION
[Cross-hatched box]	PROPERTY LINE TO BE ABANDONED
[Diagonal hatched box]	ROAD STRIP TO BE REMOVED WITH MILLING
[Stippled box]	ASPHALT TO BE MILLED
[Dashed line]	LIMITS OF ASPHALT MILLING
[Circle with dot]	SIGN TO BE RELOCATED

- DEMOLITION PLAN NOTES**
- THE CONTRACTOR IS RESPONSIBLE FOR THE DEMOLITION, REMOVAL AND DISPOSING IN A LOCATION APPROVED BY ALL GOVERNING AUTHORITIES, OF ALL STRUCTURES, PADS, WALLS, FLUMES, FOUNDATIONS, PARKING, DRIVES, DRAINAGE STRUCTURES, UTILITIES, ETC. SUCH THAT THE IMPROVEMENTS SHOWN ON THE REMAINING PLANS CAN BE CONSTRUCTED. ALL FACILITIES TO BE REMOVED SHALL BE UNDERCUT TO SUITABLE MATERIAL AND BROUGHT TO GRADE WITH SUITABLE COMPACTED FILL MATERIAL PER THE SPECIFICATIONS.
  - THE CONTRACTOR IS RESPONSIBLE FOR REMOVING ALL DEBRIS FROM THE SITE AND DISPOSING OF THE DEBRIS IN A LAWFUL MANNER. THE CONTRACTOR IS RESPONSIBLE FOR OBTAINING ALL PERMITS REQUIRED FOR DEMOLITION AND DISPOSAL.
  - THE CONTRACTOR SHALL MAINTAIN ALL UTILITY SERVICES TO THE EXISTING FACILITIES TO REMAIN AT ALL TIMES. UTILITY SERVICES SHALL NOT BE INTERRUPTED WITHOUT APPROVAL FROM UTILITY COMPANY AND COORDINATION THROUGH THE SAME.
  - THE LOCATIONS OF ALL EXISTING UTILITIES SHOWN ON THIS PLAN HAVE BEEN DETERMINED FROM THE BEST INFORMATION AVAILABLE AND ARE GIVEN FOR THE CONVENIENCE OF THE CONTRACTOR. THE ENGINEER ASSUMES NO RESPONSIBILITY FOR THEIR ACCURACY. PRIOR TO THE START OF ANY DEMOLITION ACTIVITY THE CONTRACTOR NOTIFY THE UTILITY COMPANIES FOR ONSITE LOCATIONS OF EXISTING UTILITIES.
  - ALL EXISTING SEWERS, PIPING AND UTILITIES SHOWN ARE NOT TO BE INTERPRETED AS THE EXACT LOCATION OR AS THE ONLY OBSTACLES THAT MAY OCCUR ON THE SITE. VERIFY EXISTING CONDITIONS AND PROCEED WITH CAUTION AROUND ANY ANTICIPATED FEATURES. GIVE NOTICE TO ALL UTILITY COMPANIES REGARDING DESTRUCTION AND REMOVAL OF ALL SERVICE LINES AND CAP ALL LINES BEFORE PROCEEDING WITH THE WORK. UTILITIES DETERMINED TO BE ABANDONED AND LEFT IN PLACE SHALL BE GROUTED IF UNDER ROADWAY.
  - ELECTRICAL, TELEPHONE, CABLE, WATER, FIBER OPTIC CABLE AND/OR GAS LINES NEEDING TO BE REMOVED OR RELOCATED SHALL BE COORDINATED WITH THE AFFECTED UTILITY COMPANY. ADEQUATE TIME SHALL BE PROVIDED FOR RELOCATION AND CLOSE COORDINATION WITH THE UTILITY COMPANY IS NECESSARY TO PROVIDE A SMOOTH TRANSITION IN UTILITY SERVICE. CONTRACTOR SHALL PAY CLOSE ATTENTION TO EXISTING UTILITIES WITHIN THE ANY ROAD RIGHT OF WAY DURING CONSTRUCTION.
  - CONTRACTOR MUST PROTECT THE PUBLIC AT ALL TIMES WITH FENCING, BARRICADES, ENCLOSURES, ETC. TO THE BEST PRACTICES AND APPROVED BY THE CITY AND SCDOT.
  - PRIOR TO DEMOLITION OCCURRING, PERIMETER CONTROLS SHALL BE INSTALLED.
  - SHOULD REMOVAL AND/OR RELOCATION ACTIVITIES DAMAGE FENCING, CURB & GUTTER, LIGHTING, AND/OR STORM INLET STRUCTURES, THEN THE CONTRACTOR SHALL PROVIDE NEW MATERIALS/STRUCTURES IN ACCORDANCE WITH THE CONTRACT DOCUMENTS. EXCEPT FOR MATERIALS DESIGNED TO BE RELOCATED ON THIS PLAN, ALL OTHER CONSTRUCTION MATERIALS SHALL BE NEW.
  - CONTRACTOR SHALL SAW-CUT & REMOVE PAVEMENT IN THOSE AREAS WHERE IT IS REQUIRED AS SHOWN ON THESE CONSTRUCTION PLANS BUT IF ANY DAMAGE IS INCURRED ON ANY OF THE SURROUNDING PAVEMENT, ETC. THE CONTRACTOR SHALL BE RESPONSIBLE FOR ITS REMOVAL AND REPAIR.
  - DAMAGE TO ALL EXISTING CONDITIONS TO REMAIN WILL BE REPLACED AT CONTRACTOR'S EXPENSE.
  - CONTRACTOR IS REQUIRED TO DEMOLISH OR MODIFY IF APPLICABLE, ALL EXISTING CONDITIONS IN CONFLICT WITH PROPOSED IMPROVEMENTS AND IS REQUIRED TO INCLUDE ALL SUCH WORK IN THE BD.
  - SCDOT APPROVED 3RD PARTY INSPECTION (CEI) REQUIRED.

- OFF-SITE UTILITIES:**
- OFF-SITE CONTRACTOR WILL BE RESPONSIBLE FOR THE FOLLOWING:
- COORDINATION OF ALL UTILITY RELOCATION REQUIRED FOR THE OFF-SITE IMPROVEMENTS.
  - COORDINATION, RELOCATION AND FEES FOR UTILITY VALVES, METERS, MANHOLE RINGS & COVERS AND APPURTENANCES.
  - ALL UTILITY LINES WILL BE RELOCATED AND BY THE RESPECTIVE UTILITY PROVIDER WITH THE CONTRACTOR'S ONLY RESPONSIBILITY BEING TO COORDINATE THE WORK WITH HIS CONSTRUCTION.

**OFF-SITE ROADWAY - DEMO & ESC PLAN**



NOTE: CONTRACTOR SHALL ENSURE THAT ALL EXTRANEOUS PVIOUS DISTURBED AREAS ARE IMPROVED WITH SOD PER GREENVILLE COUNTY AND SCDOT STANDARDS AND SPECIFICATIONS.

REFER TO EROSION CONTROL PLANS & NOTES FOR EROSION CONTROL MEASURES TAKEN ON-SITE.

SCDOT APPROVED 3RD PARTY INSPECTION (CEI) REQUIRED.

**ALWAYS CALL 811 BEFORE YOU DIG**

EVERY DIGGING JOB REQUIRES A CALL - EVEN SMALL PROJECTS LIKE PLANTING TREES OR SHRUBS. IF YOU HIT AN UNDERGROUND UTILITY LINE WHILE DIGGING, YOU CAN HARM YOURSELF OR THOSE AROUND YOU, DISRUPT SERVICE TO AN ENTIRE NEIGHBORHOOD AND POTENTIALLY BE RESPONSIBLE FOR FINES AND REPAIR COSTS. SMART DIGGING MEANS CALLING 811 BEFORE EACH JOB. WHETHER YOU ARE A HOMEOWNER OR A PROFESSIONAL EXCAVATOR, ONE CALL TO 811 GETS YOUR UNDERGROUND UTILITY LINES MARKED FOR FREE.

**Order Plans**