

REVISIONS	BY

FREELAND and KAUFFMAN, INC.
 Engineers • Landscape Architects
 209 West Stone Avenue
 Greenville, South Carolina 29609
 864-233-5497

NO SET FOR CONSTRUCTION



CALIBER COLLISION
 1233 E. BUTLER ROAD
 GREENVILLE, SC 29607
 CROSS DEVELOPMENT CC FIVE FORKS, LLC.
 4836 MARSH RIDGE
 CARROLLTON, TX 75010
 TEL. (214) 614-8252

DRAWN
EAC
CHECKED
TMB
DATE
01/04/2021
SCALE

DRAWING
 34

McGraw-Edison

DESCRIPTION

The Galleon™ LED luminaire delivers exceptional performance in a highly scalable, low-profile design. Patented, high-efficiency AccuLED Optics™ system provides uniform and energy conscious illumination to walkways, parking lots, roadways, building areas and security lighting applications. IP66 rated and UL/cUL Listed for wet locations.

Catalog #	Type
Project	
Comments	
Prepared by	Date

SPECIFICATION FEATURES

Construction

Extruded aluminum driver enclosure thermally isolated from Light Squares for optimal thermal performance. Heavy-wall, die-cast aluminum and caps enclose housing and die-cast aluminum heat sinks. A unique, patent pending interlocking housing and heat sink provides scalability with superior structural rigidity. 3G vibration tested and rated. Optional tool-less hardware available for ease of entry into electrical chamber. Housing is IP66 rated.

Optics

Patented, high-efficiency injection-molded AccuLED Optics technology. Optics are precisely designed to shape the distribution maximizing efficiency and application spacing. AccuLED Optics create consistent distributions with the scalability to meet customized application requirements. Offered standard in 4000K (+/- 275K) CCT 70 CRI. Optional 3000K, 5000K and 6000K CCT.

Electrical

LED drivers are mounted to removable tray assembly for ease of maintenance. 120-277V 50/60Hz, 347V 60Hz or 480V 60Hz operation. 480V is compatible for use with 480V Wye systems only. Standard with 0-10V dimming. Shipped standard with Eaton proprietary circuit module designed to withstand 10kV of transient line surge. The Galleon LED luminaire is suitable for operation in -40°C to 40°C ambient environments. For applications with ambient temperatures exceeding 40°C, specify the HA (High Ambient) option. Light Squares are IP66 rated. Greater than 90% lumen maintenance expected at 60,000 hours. Available in standard 1A drive current and optional 600mA, 800mA and 1200mA drive currents (nominal).

Mounting

STANDARD ARM MOUNT: Extruded aluminum arm includes internal bolt guides allowing for easy positioning of fixture during mounting. When mounting two or more luminaires at 90° and 120° apart, the EA extended arm may be required. Refer to the

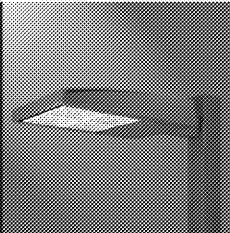
arm mounting requirement table. Round pole adapter included. For wall mounting, specify wall mount bracket option. **QUICK MOUNT ARM:** Adapter is bolted directly to the pole. Quick mount arm slide into place on the adapter and is secured via two screws, facilitating quick and easy installation. The versatile, patent pending, quick mount arm accommodates multiple drill patterns ranging from 1-1/2" to 4-7/8". Removal of the door on the quick mount arm enables wiring of the fixture without having to access the driver compartment. A knock-out enables round pole mounting.

Finish

Housing finished in super durable TGIC polyester powder coat paint, 2.5 mil nominal thickness for superior protection against fade and wear. Heat sink is powder coated black. Standard housing colors include black, bronze, grey, white, dark platinum and graphite metallic. RAL and custom color matches available.

Warranty

Five-year warranty.

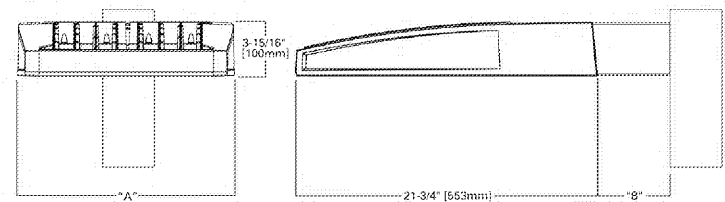


GLEON GALLEON LED

1-10 Light Squares
 Solid State LED

AREA/SITE LUMINAIRE

DIMENSIONS

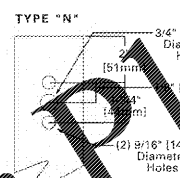


DIMENSION DATA

Number of Light Squares	"A" Width	"B" Standard Arm Length	"G" Optional Arm Length 1	Weight with Arm (lbs.)	EPA with Arm 2 (Sq. Ft.)
1-4	15-1/2" (394mm)	7" (178mm)	10" (254mm)	33 (15.0 kgs.)	0.96
5-6	21-5/8" (549mm)	7" (178mm)	10" (254mm)	44 (20.0 kgs.)	1.00
7-8	27-5/8" (702mm)	7" (178mm)	13" (330mm)	54 (24.5 kgs.)	1.07
9-10	33-3/4" (857mm)	7" (178mm)	16" (408mm)	63 (28.6 kgs.)	1.12

NOTES: 1. Optional arm length to be used when mounting two fixtures at 90° on a single pole. 2. EPA calculated with optional arm length.

DRILLING PATTERN



CERTIFICATION DATA

UL/cUL Wet Location Listed
 ISO 9001
 LM79 / LM80 Compliant
 3G Vibration tested
 IP66 Rated
 Die-cast Aluminum "A" Qualified*

ENERGY DATA

Electronic LED Driver
 >90% Power Factor
 <20% Total Harmonic Distortion
 120V, 277V 50/60Hz
 347V & 480V 60Hz
 -40°C Min. Temperature
 40°C Max. Temperature
 50°C Max. Temperature (HA Option)

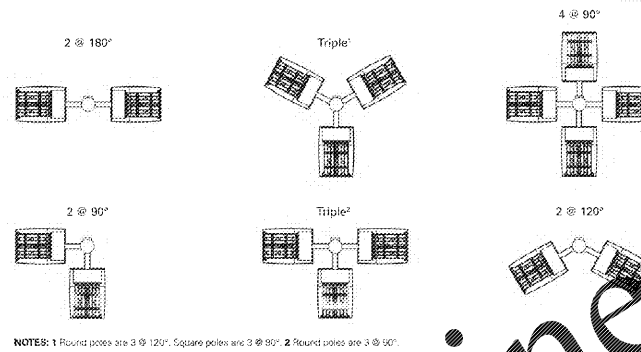


T0500020EN
 March 12, 2016 4:50 PM

page 2

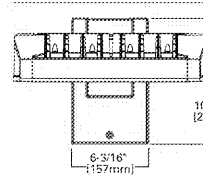
ARM MOUNTING REQUIREMENTS

Configuration	90° Apart	120° Apart
GLEON-AF-01	7" Arm (Standard)	7" Arm (Standard)
GLEON-AF-02	7" Arm (Standard)	7" Arm (Standard)
GLEON-AF-03	7" Arm (Standard)	7" Arm (Standard)
GLEON-AF-04	7" Arm (Standard)	7" Arm (Standard)
GLEON-AF-05	10" Extended Arm (Required)	7" Arm (Standard)
GLEON-AF-06	10" Extended Arm (Required)	7" Arm (Standard)
GLEON-AF-07	13" Extended Arm (Required)	13" Extended Arm (Required)
GLEON-AF-08	13" Extended Arm (Required)	13" Extended Arm (Required)
GLEON-AF-09	16" Extended Arm (Required)	16" Extended Arm (Required)
GLEON-AF-10	16" Extended Arm (Required)	16" Extended Arm (Required)

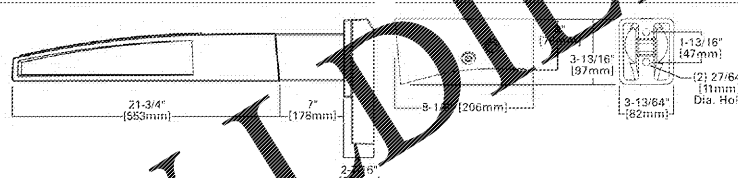


NOTES: 1. Round poles are 3 @ 120°. Square poles are 3 @ 90°. 2. Round poles are 3 @ 90°.

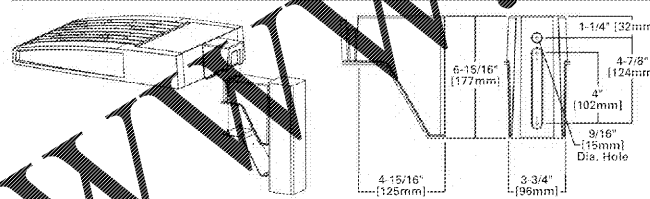
STANDARD WALL MOUNT



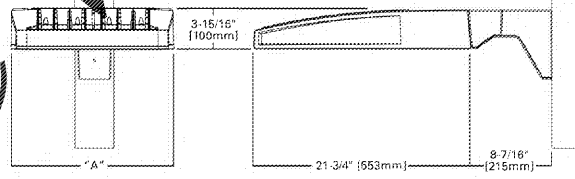
MASONRY MOUNT



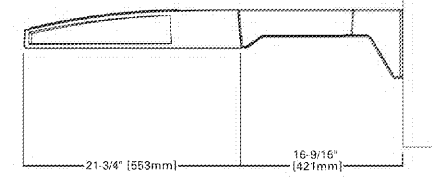
QUICK MOUNT ARM (INCLUDES FIXTURE ADAPTER)



QM Quick Mount Arm (Standard)



QMEA Quick Mount Arm (Extended)



QUICK MOUNT ARM DATA

Number of Light Squares 1,2	"A" Width	Weight with QM Arm (lbs.)	Weight with QMEA Arm (lbs.)	EPA (Sq. Ft.)
1-4	15-1/2" (394mm)	35 (16.91 kgs.)	38 (17.27 kgs.)	
5-6 3	21-5/8" (549mm)	46 (20.91 kgs.)	49 (22.27 kgs.)	1.11
7-8	27-5/8" (702mm)	56 (25.45 kgs.)	59 (26.82 kgs.)	

NOTES: 1. QM option available with 1-8 light square configurations. 2. QMEA option available with 1-6 light square configurations. 3. QMEA arm to be used when mounting two fixtures at 90° on a single pole.



ETN
 1121 Highway 71 South
 Rockledge City, GA 30289
 P: 770-886-1800
 www.eaton.com/etn

Specifications and dimensions subject to change without notice.

T0500020EN
 March 12, 2016 4:50 PM

Order Plans @



Powering Business Worldwide

*www.designrights.org

PHOTOMETRIC
 DETAILS