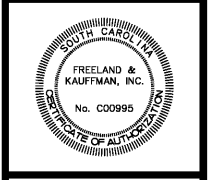


REVISIONS	BY

FREELAND and KAUFFMAN, INC.
 Engineers • Landscape Architects
 209 West Stone Avenue
 Greenville, South Carolina 29609
 864-233-5497

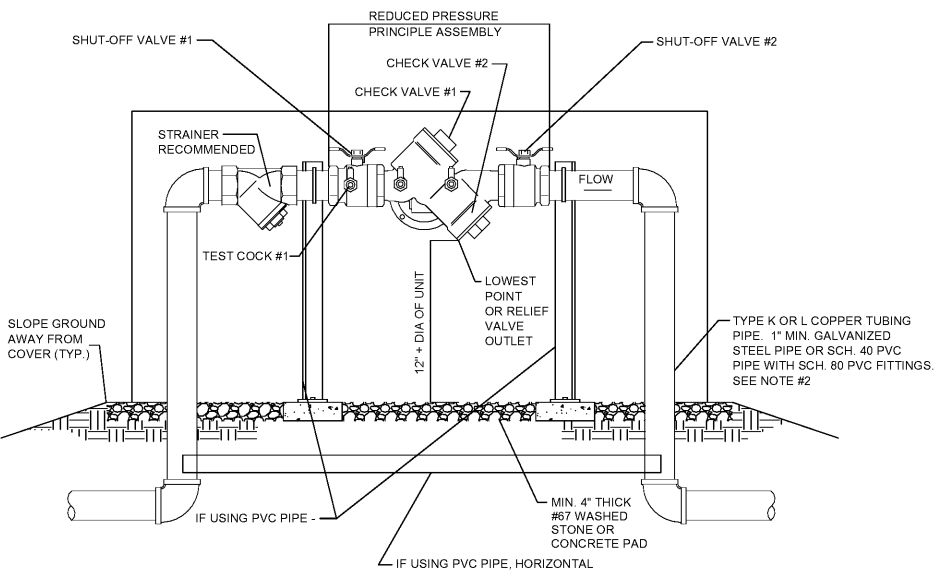
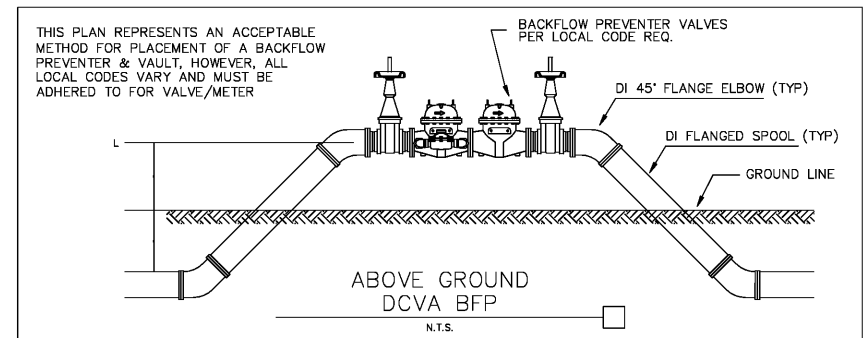
DO NOT SET FOR CONSTRUCTION



CALIBER COLLISION
 1233 E. BUTLER ROAD
 GREENVILLE, SC 29607
 CROSS DEVELOPMENT CC FIVE FORKS, LLC.
 4836 MARSH RIDGE
 CARROLLTON, TX 75010
 TEL. (214) 614-8252

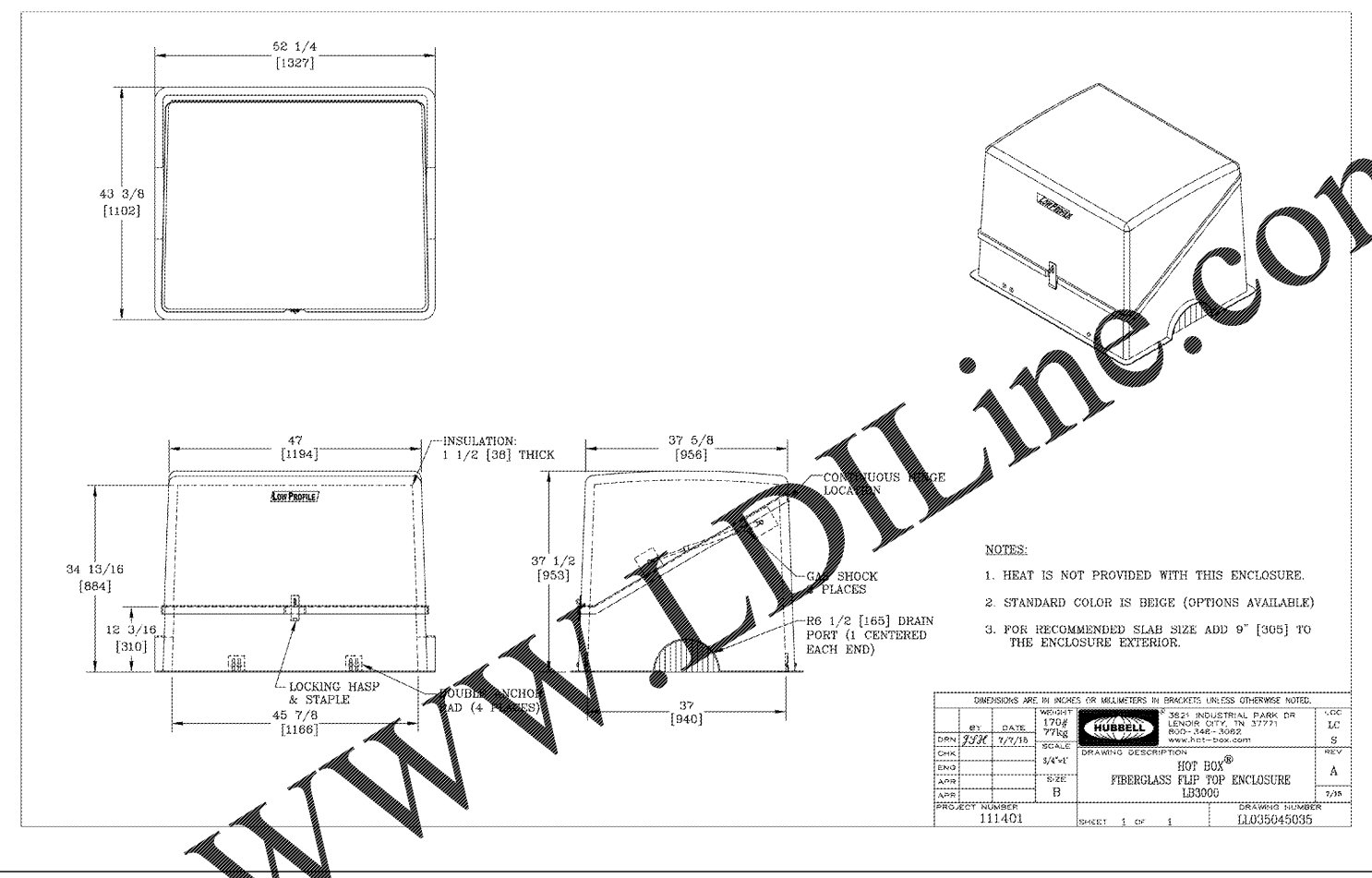
DRAWN	EAC
CHECKED	TMB
DATE	01/04/2021
SCALE	

DRAWING
 29

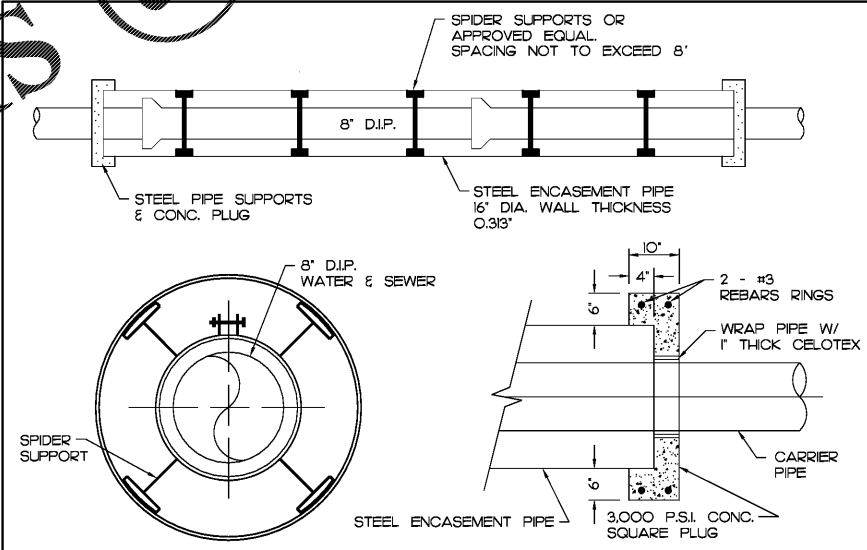


- BACKFLOW DEVICE AND INSULATED ENCLOSURE DATA**
- USE THE ABOVE LISTED MANUFACTURERS, OR APPROVED EQUAL. SUBMIT SHOP DRAWINGS OF ALL BFP DEVICES AND ENCLOSURES TO BLUE GRANITE WATER COMPANY FOR APPROVAL PRIOR TO ORDERING.
 - BUILDING CONTRACTOR TO INSTALL ENCLOSURE, INCLUDING CONCRETE MOUNTING PAD, PER MANUFACTURER'S RECOMMENDATIONS.
 - CONTRACTOR TO CONTACT ENCLOSURE MANUFACTURER AND CONFIRM CORRECT ENCLOSURE MODEL BASED ON ACTUAL BFP DEVICE MODEL BEFORE ORDERING.
 - ALL BFP DEVICES AND ENCLOSURES SHALL BE INSTALLED IN ACCORDANCE WITH YORK COUNTY AND BLUE GRANITE WATER COMPANY STANDARDS AND REQUIREMENTS.

DOMESTIC & IRRIGATION RPZ BACKFLOW & ENCLOSURE
 (N.T.S.)



INSULATED BACKFLOW ENCLOSURE FOR FIRE
 (N.T.S.)



SIZE OF D.I. CARRIER PIPE	SIZE OF STEEL CASING PIPE	COATED PIPE MIN. WALL THK	PIPE CLASS
2"	6"	0.188	STANDARD
4"	12"	0.188	SCHED.20
6"	14"	0.188	SCHED.20
8"	16"	0.188	SCHED.10
10"	18"	0.188	SCHED.10
12"	22"	0.188	SCHED.10
14"	24"	0.219	SCHED.10
16"	26"	0.219	SCHED.10

NOTE:
 NON-COATED AND SAID CASING IS NOT CATHODICALLY PROTECTED. THE WALL THICKNESS SHALL BE INCREASED TO THE NEAREST STANDARD SIZE WHICH IS A MIN. OF 0.063" GREATER THAN THE THICKNESS SHOWN EXCEPT FOR DIAMETERS UNDER 12 3/4".

BORING ENCASEMENT DETAIL (FOR WATER & SEWER LINES)
 (N.T.S.)

Order Plans @