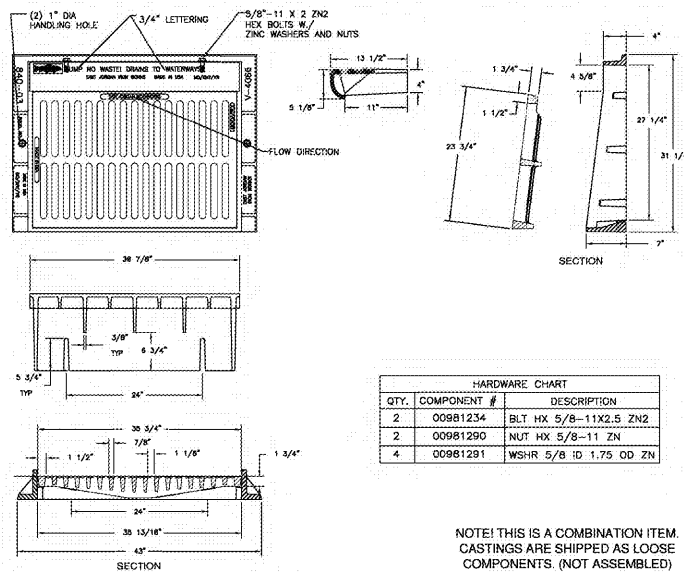


**V4066-9 ASSEMBLY**



PRODUCT NUMBER  
**44066930C31**

**DESIGN FEATURES**

**MATERIALS**  
GRATE-GRAY IRON  
ASTM A48 CL35B  
FRAME-GRAY IRON  
ASTM A48 CL35B  
BACK-GRAY IRON  
ASTM A48 CL35B

**DESIGN LOAD**  
HEAVY DUTY

**COATING**  
UNDIPPED

**OPEN AREA**  
366 SQ IN

✓ DESIGNATES MACHINED SURFACE

**REFERENCE INFORMATION**

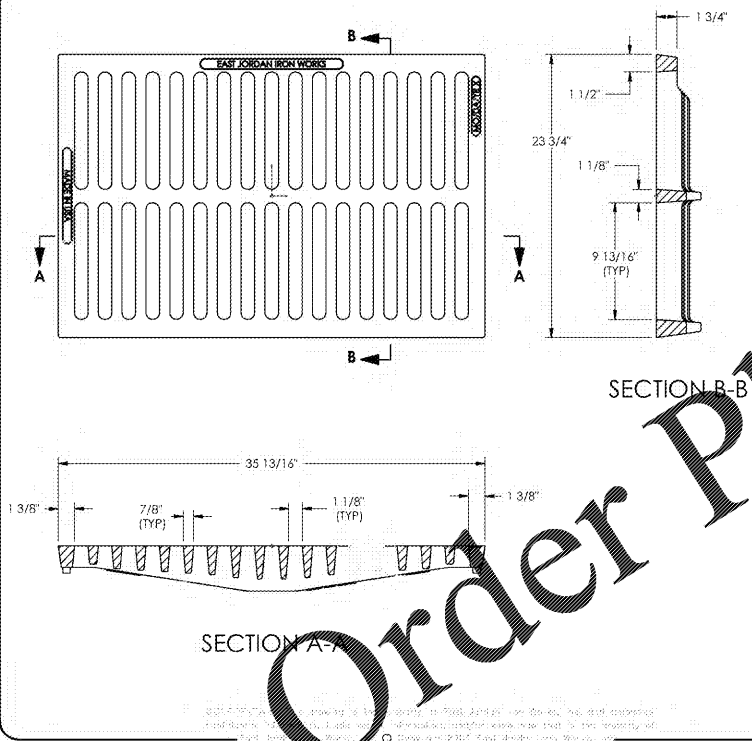
44066010  
44066930  
44068063

**DRAWING DETAILS**

ORIGINAL DRAWING: DEF 04/26/09  
REVISED BY: JJD 06/03/10

Corporate Headquarters  
301 Spring Street  
PO Box 439  
East Jordan, MI  
49722-0439  
800.874.4100

Call Today to Make an Inquiry  
**800.626.4653**  
**EJW EAST JORDAN**  
MADE IN USA



**EJW EAST JORDAN**  
800-626-4653  
www.ejw.com  
MADE IN USA

PRODUCT NUMBER  
**44066930**

CATALOG NUMBER  
**V-4066-9**

**GRATE**

LOAD RATING  
**HEAVY DUTY**

COATING  
**UNDIPPED**

ESTIMATED WEIGHT  
**GRATE: 90 LBS**

**MATERIAL SPECIFICATION**

**GRATE - GRAY IRON**  
ASTM A48 CL35B

OPEN AREA  
366 SQ. IN.

DESIGNATES MACHINED SURFACE

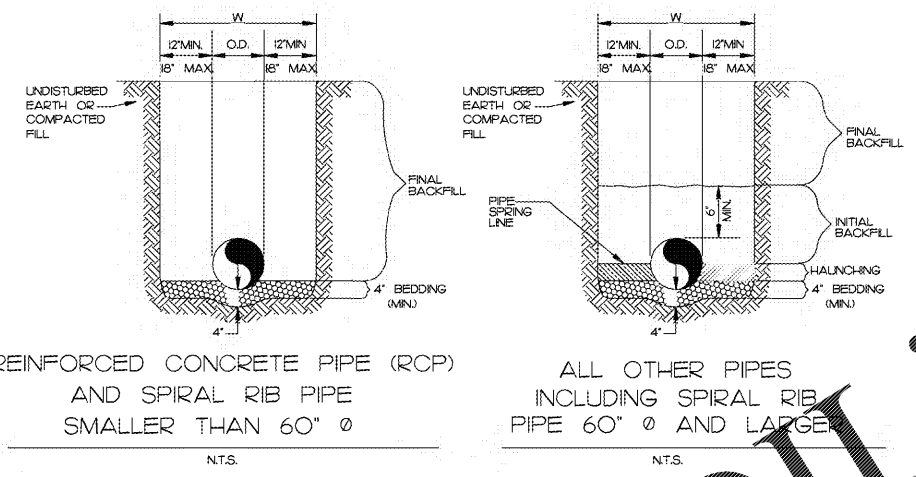
DRAWN DATE  
SBB 11/12/07

LAST REVISED DATE

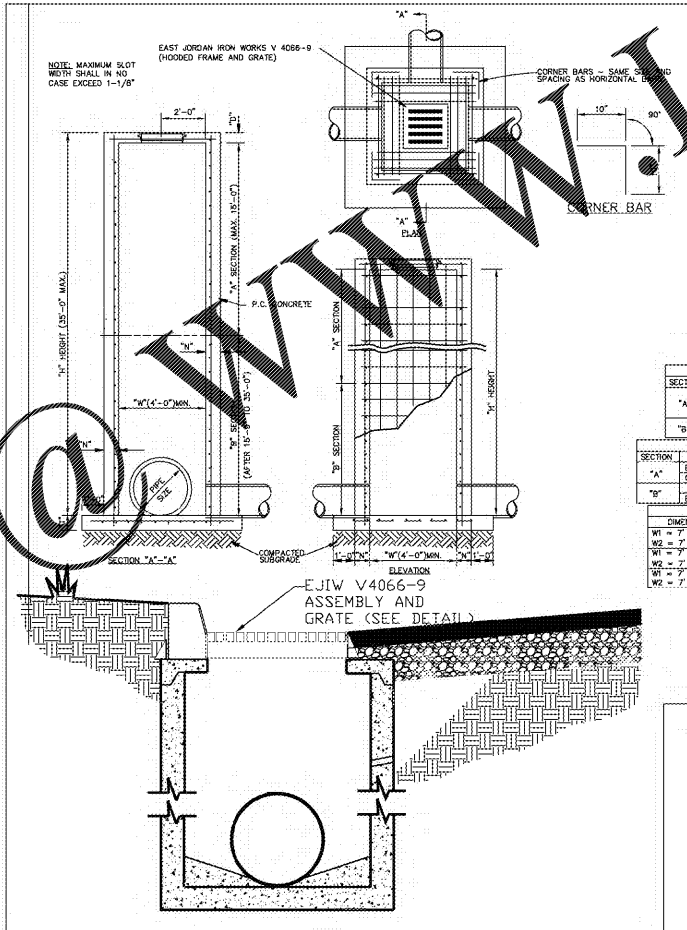
REFERENCE INFORMATION  
**44066930**

CATCH BASIN  
FRAME AND GRATE  
N.T.S.

**STORM SEWER TRENCH AND BEDDING**



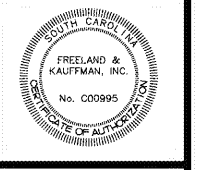
- GENERAL NOTES**
1. BEDDING SHALL BE CLASS HA WORKED BY HAND, IF GROUNDWATER IS ANTICIPATED, THEN BEDDING SHALL BE CLASS HB COMPACTED TO 85% STANDARD PROCTOR.
  2. HANDLING SHALL BE WORKED AROUND THE PIPE BY HAND TO ELIMINATE VOIDS AND SHALL BE CLASS HA OR CLASS HB OR CLASS B COMPACTED TO 85% PROCTOR.
  3. INITIAL BACKFILL SHALL BE CLASS HA WORKED BY HAND, OR CLASS HB OR CLASS B COMPACTED TO 85% STANDARD PROCTOR.
  4. INITIAL BACKFILL NOT UNDER PAVED AREAS CAN BE CLASS B COMPACTED TO 90% STANDARD PROCTOR.
  5. FINAL BACKFILL SHALL BE CLASS II, OR CLASS COMPACTED AS NOTED IN NOTES 3 AND 4.
  6. FINAL BACKFILL NOT UNDER PAVED AREAS SHALL BE CLASS IV-A COMPACTED TO 92% STANDARD PROCTOR.
  7. ALL MATERIALS ARE CLASSIFIED IN ACCORDANCE WITH ASTM D 2324-LATEST EDITION.
  8. ALL MATERIALS SHALL BE INSTALLED IN MAXIMUM 6" LOOSE LIFTS IN ACCORDANCE WITH ASTM 698 CLASS B AND A-A MATERIALS SHALL BE COMPACTED NEAR OPTIMUM MOISTURE CONTENT.
  9. ALL TRENCH EXCAVATIONS SHALL BE FREE OF DEBRIS, ORGANICS AND ROCKS LARGER THAN 3".



REVISIONS	BY

**FREELAND and KAUFFMAN, INC.**  
Engineers • Landscape Architects  
209 West Stone Avenue  
Greenville, South Carolina 29609  
864-233-5497

BD SET  
NOT FOR  
CONSTRUCTION



**CALIBER COLLISION**  
1233 E. BUTLER ROAD  
GREENVILLE, SC 29607

CROSS DEVELOPMENT CC FIVE FORKS, LLC.  
4936 MARSH RIDGE  
CARROLLTON, TX 75010  
TEL. (214) 614-8252

DRAWN	EAC
CHECKED	TMB
DATE	05/04/2021
SCALE	

DRAWING  
19