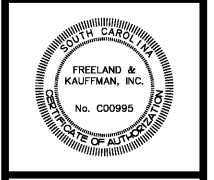


REVISIONS	BY

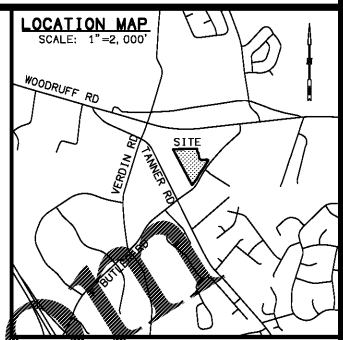
FREELAND and KAUFFMAN, INC.
 Engineers • Landscape Architects
 209 West Stone Avenue
 Greenville, South Carolina 29609
 864-233-5497

DO NOT SET FOR CONSTRUCTION



CALIBER COLLISION
 1233 E. BUTLER ROAD
 GREENVILLE, SC 29607
 CROSS DEVELOPMENT CC FIVE FORKS, LLC.
 4836 MARSH RIDGE
 CARROLLTON, TX 75010
 TEL. (214) 614-8252

DRAWN	EAC
CHECKED	TMB
DATE	01/04/2021
SCALE	
DRAWING	
	16



RAINFALL DISTRIBUTION FOR GREENVILLE, SOUTH CAROLINA

STORM EVENT	2-YR	10-YR	25-YR	100-YR
RAINFALL (INCHES)	3.77	5.50	6.70	9.31

POST DEVELOPMENT VS. ALLOWED DISCHARGE SUMMARY

AREA ID	DRAINS TO:	Q2 (CFS)	Q10 (CFS)	Q25 (CFS)	Q100 (CFS)
ALLOWED DISCHARGE (CFS)	ROCKY CREEK FROM POND	11.61	23.57	30.60	42.16
POST DEV DISCHARGE (CFS)	ROCKY CREEK FROM POND	6.69	19.49	27.19	34.89

• ALLOWABLE DISCHARGE VALUES ARE FROM PREVIOUSLY APPROVED AND PERMITTED DOLLAR GENERAL STORMWATER MANAGEMENT REPORT (GREENVILLE COUNTY LDP #2003-5648)

POST DEVELOPMENT DRAINAGE BASIN SUMMARY

AREA ID	DRAINS TO:	AREA (AC.)	TC (MIN.)	CN VALUE	Q2 (CFS)	Q10 (CFS)	Q25 (CFS)	Q100 (CFS)	
POST-DEV AREA 1A	POND	5.31	14.5	92	18.72	28.85	36.22	50.82	
POST-DEV AREA 1B	POND	2.70	6.0	89	11.50	18.23	23.13	32.56	
POST-DEV AREA 1C	POND	1.22	11.9	68	1.78	3.91	5.67	9.43	
POST-DEV AREA 2	POND	1.33	15.7	72	2.11	4.33	6.10	9.78	
POST-DEV AREA 1	REEDY RIVER TO ENOREE RIVER	STORMWATER DETENTION POND RELEASE RATES	6.69	19.49	27.19	34.89	MAX FLOW: 953.38	MAX FLOW: 954.86	MAX FLOW: 954.86

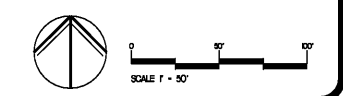
• Q VALUES CALCULATED USING HYDRAFLOW HYDROGRAPHS
 • RAINFALL DISTRIBUTION DATA TAKEN FROM NOAA ATLAS 14, VOLUME 2, VERSION 3, GREENVILLE SOUTH CAROLINA STORM DISTRIBUTION TYPE II

POST DEVELOPMENT RUNOFF CURVE NUMBER SUMMARY TABLE

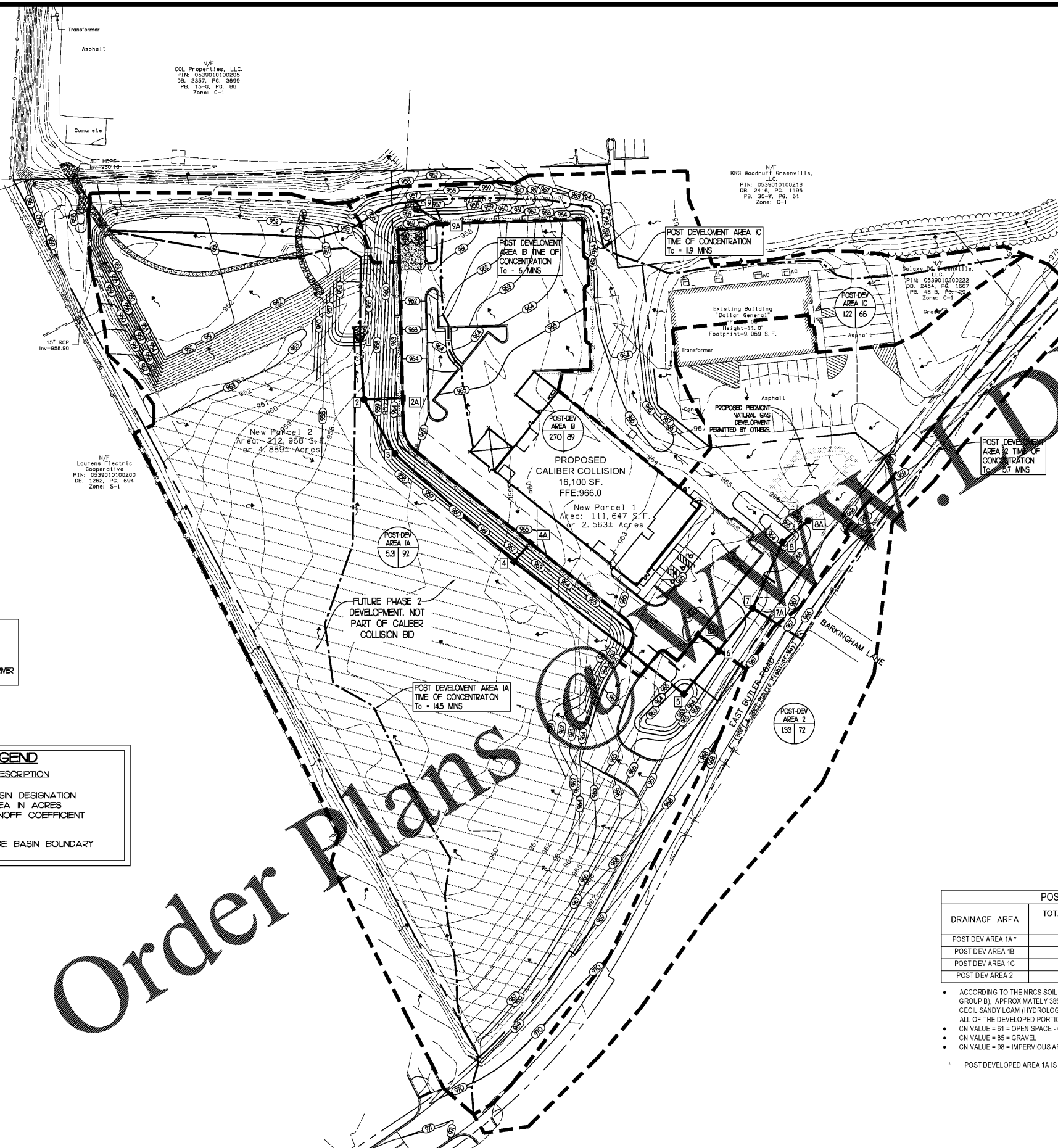
DRAINAGE AREA	TOTAL AREA (AC.)	OPEN SPACE - GOOD CONDITION (AC.)	GRAVEL (AC.)	IMPERVIOUS AREA (AC.)	WEIGHTED CN VALUE
POST DEV AREA 1A*	5.31	0.80	0.00	4.51	92
POST DEV AREA 1B	2.70	0.69	0.00	2.01	89
POST DEV AREA 1C	1.22	0.99	0.00	0.23	68
POST DEV AREA 2	1.33	0.89	0.10	0.3400	72

• ACCORDING TO THE NRCS SOIL SURVEY FOR GREENVILLE COUNTY, SC APPROXIMATELY 28% OF THE SITE'S SOILS ARE Apg - APPLING SANDY LOAM (HYDROLOGIC SOIL GROUP B), APPROXIMATELY 38% OF THE SITE'S SOILS ARE C6b - CECIL SANDY LOAM (HYDROLOGIC SOIL GROUP B), APPROXIMATELY 7% OF THE SITE'S SOILS ARE C6c - CECIL SANDY LOAM (HYDROLOGIC SOIL GROUP B), AND APPROXIMATELY 27% OF THE SITE'S SOILS ARE Wc - WEHAKKEE SOILS (HYDROLOGIC SOIL GROUP B/D). CONSIDERING ALL OF THE DEVELOPED PORTIONS OF THE SITE ARE LOCATED WITHIN HYDROLOGIC SOIL GROUP B, THE ENTIRE SITE WAS ASSUMED TO BE HYDROLOGIC SOIL GROUP B.
 • CN VALUE = 61 = OPEN SPACE - GRASS (GOOD CONDITION)
 • CN VALUE = 85 = GRAVEL
 • CN VALUE = 98 = IMPERVIOUS AREA (ROOFS/PAVEMENT)
 * POST DEVELOPED AREA 1A IS ASSUMED TO BE 85% IMPERVIOUS

POST-DEVELOPMENT MAP



Order Plans



DRAINAGE BASIN:
 BROAD RIVER WATERSHED
RECEIVING WATERS:
 UPPER ENOREE RIVER -
 TRIBUTARY OF THE BROAD RIVER
 WATERSHED

LEGEND

DESCRIPTION	DESCRIPTION
	A - BASIN DESIGNATION
	B - AREA IN ACRES
	C - RUNOFF COEFFICIENT
	DRAINAGE BASIN BOUNDARY

CALL 811 BEFORE YOU DIG

EVERY DIGGING JOB REQUIRES A CALL - EVEN SMALL PROJECTS LIKE PLANTING TREES OR SURVEY. IF YOU HIT AN UNDERGROUND UTILITY LINE WHILE DIGGING, YOU CAN HARM YOURSELF OR THOSE AROUND YOU. DISRUPT SERVICE TO AN ENTIRE NEIGHBORHOOD AND POTENTIALLY BE RESPONSIBLE FOR FINES AND REPAIR COSTS. SMART DIGGING MEANS CALLING 811 BEFORE EACH JOB. WHETHER YOU ARE A HOMEOWNER OR A PROFESSIONAL EXCAVATOR, ONE CALL TO 811 GETS YOUR UNDERGROUND UTILITY LINES MARKED FOR FREE.

N/E
 COL. Progar Linc, LLC
 PIN: 0539010100205
 DB: 2357, PG: 3899
 PB: 15-G, PG: 88
 Zone: C-1

N/E
 KRG Woodruff Greenville, LLC
 PIN: 0539010100218
 DB: 2418, PG: 1195
 PB: 3D-W, PG: 61
 Zone: C-1

N/E
 Calox Greenville, LLC
 PIN: 0539010100222
 DB: 2454, PG: 1867
 PB: 4B-B, PG: 567
 Zone: C-1

N/E
 Laurens Electric Cooperative
 PIN: 0539010100200
 DB: 1282, PG: 894
 Zone: S-1