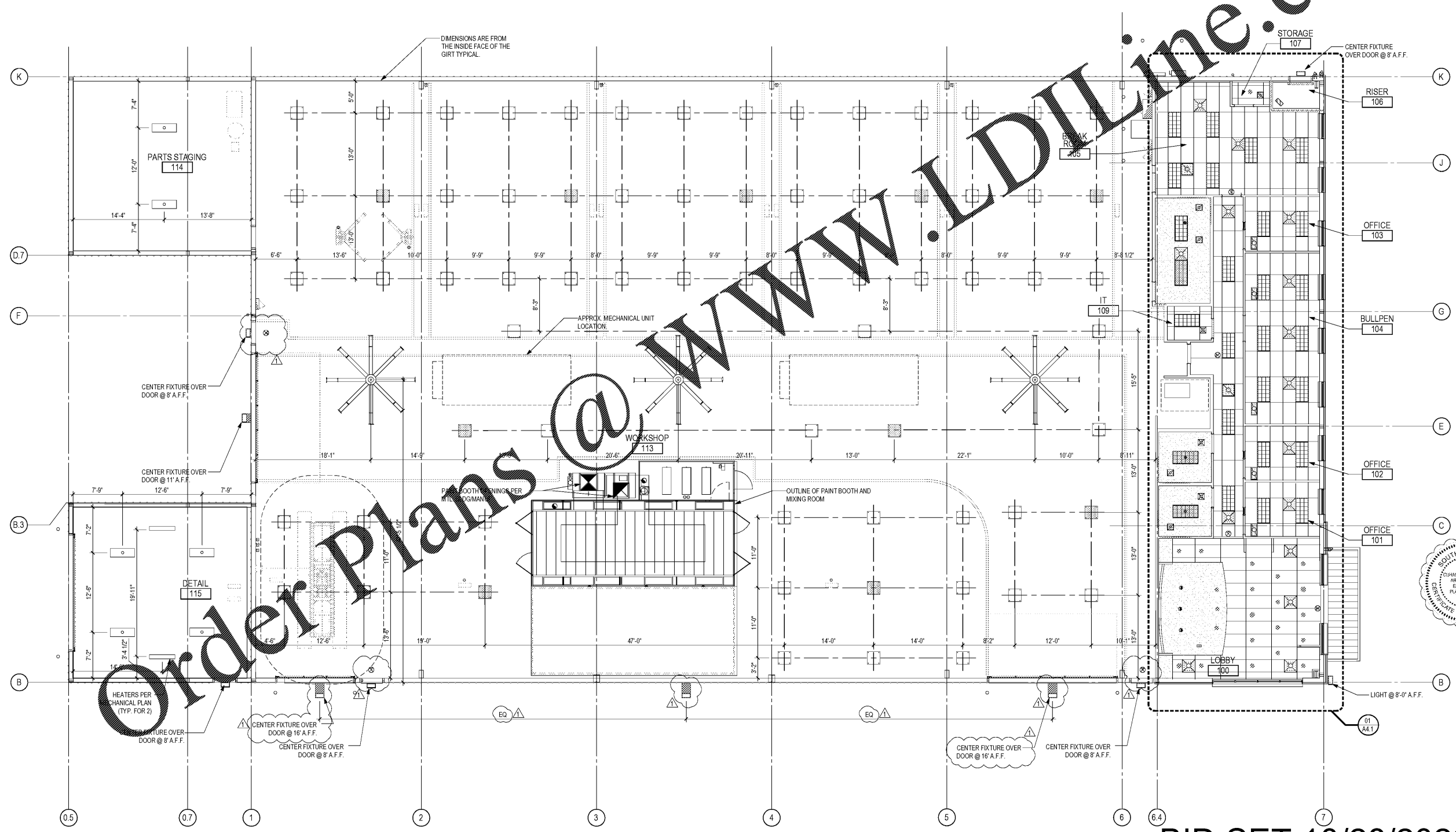


LEGEND			
2'x4' LIGHT FIXTURE		RECESSED LIGHT FIXTURE	
2'x4' LIGHT FIXTURE (EMERGENCY)		RECESSED WALL WASHER	
2'x2' LIGHT FIXTURE		EXIT LIGHT / DIRECTIONAL EXIT LIGHT	
2'x2' LIGHT FIXTURE (EMERGENCY)		MECHANICAL VENTS (REF. MEP)	
LIGHT FIXTURE AT DETAIL BAY/PART STAGING		GYPSUM BOARD CEILING	
LIGHT FIXTURE AT DETAIL BAY/PART STAGING (EMERGENCY)		SUSPENDED ACOUSTICAL TILE	
WALL PACK		CORD DROPS REF. ELECTRICAL	
WALL SCONCE		12'-0" BIG ASS FANS @ 12'-0" A.F.F.	

- SHEET NOTES**
1. ALL DIMENSIONS NOTED OR SHOWN ARE TAKEN FROM FACE OF STUD/GIRT UNLESS NOTED OTHERWISE.
  2. ALL FIXTURES LOCATED IN THE SHOP ARE TO BE SUSPENDED @12'-0" AFF UNLESS NOTED OTHERWISE.
  3. BIG ASS FANS ARE TO BE PROVIDED BY AND INSTALLED BY THE GENERAL CONTRACTOR.



Order Plans @ www.LDline.com

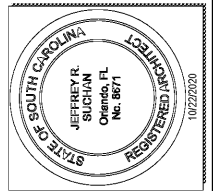
1925 Prospect Av.  
Orlando, FL 32814  
P (407) 661-9100  
F (407) 661-9101  
[www.cp.com](http://www.cp.com)  
Florida Corporate Certificate #AA 000626



CLIENT NAME  
**Cross Development**  
4536 Marshall Road  
Carrollton, TX 75010

PROJECT NAME  
**Caliber Collision Five Forks (161)**  
1215 East Buller Rd  
Greenville, SC 29607

SHEET TITLE  
**Reflected Ceiling Plan**



PROJECT NO.	220057
DATE	07/08/2020
DRAWN	JL_DV
CHECKED	CD
RELEASE	
PERMIT COMMENTS RESPONSE	08/22/2020

**BID SET 10/28/2020**  
01 REFLECTED CEILING PLAN  
1/8"=1'-0"

A1.1