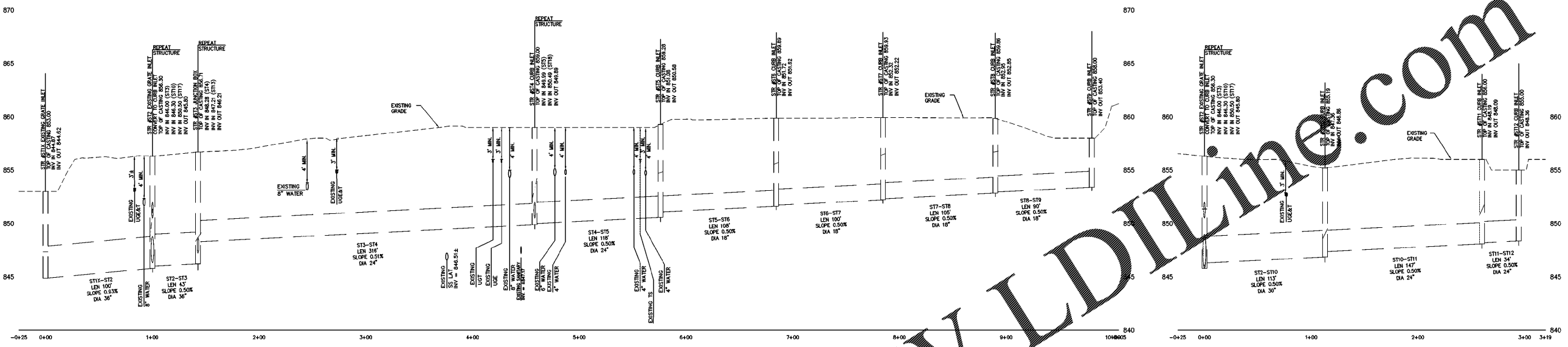


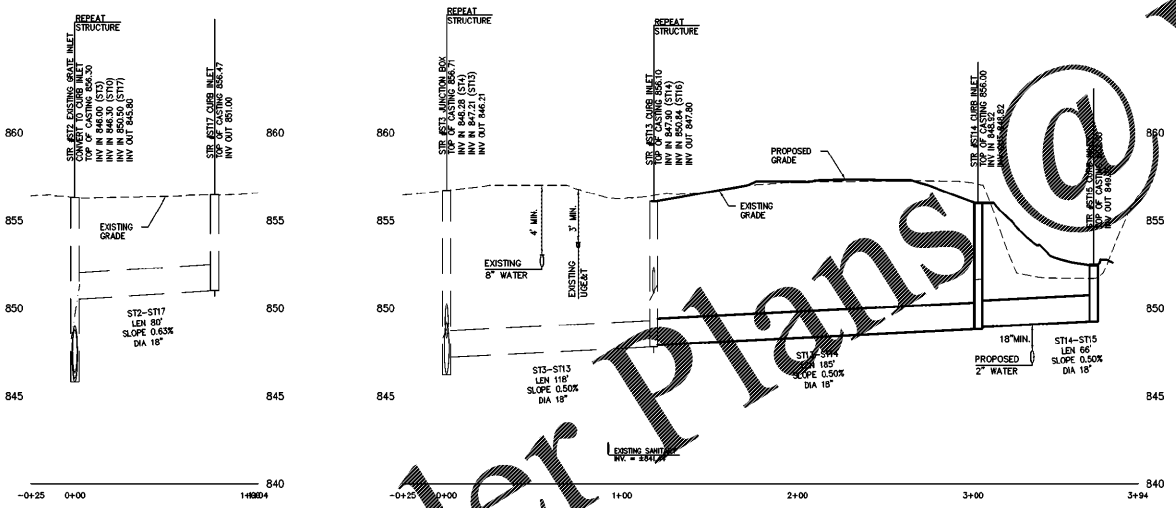
REVISIONS	BY

DRAWN BY	DMH
CHECKED BY	CLM
DATE	01/30/13
SCALE	1" = 40'
JOB No.	11-174
SHEET NUMBER	ST-1
OF SHEETS	8

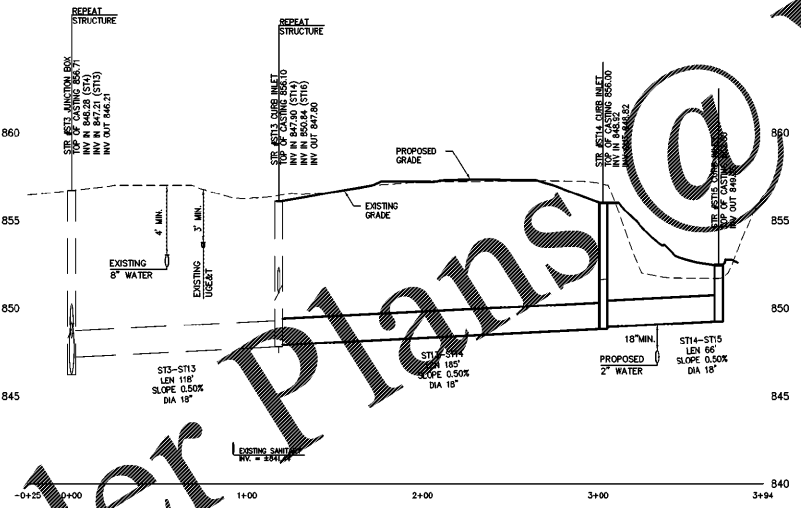


EXISTING ST1X THRU ST9
 scale: 1"=40' horizontal
 1"=4' vertical

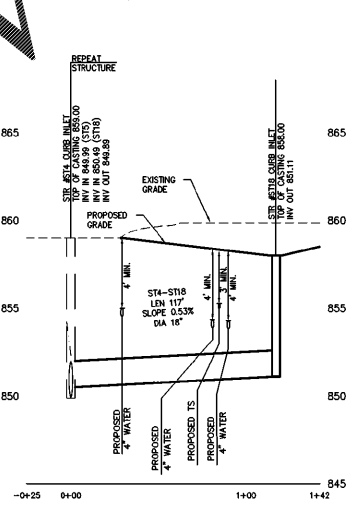
EXISTING ST2 TO ST10 THRU ST12
 scale: 1"=40' horizontal
 1"=4' vertical



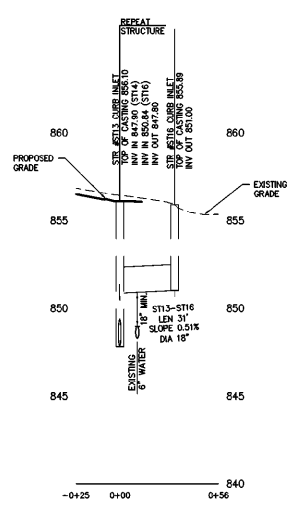
EXISTING ST2 TO ST17
 scale: 1"=40' horizontal
 1"=4' vertical



ST3 TO ST13 THRU ST15
 scale: 1"=40' horizontal
 1"=4' vertical



ST4 TO ST18
 scale: 1"=40' horizontal
 1"=4' vertical



EXISTING ST13 TO ST16
 scale: 1"=40' horizontal
 1"=4' vertical

EXISTING CONDITIONS NOTE

THE EXISTING CONDITIONS WERE TAKEN FROM THE DESIGN PLANS FOR THE WALLMART DEVELOPMENT PREPARED BY WOLVERTON & ASSOCIATES LAST REVISED 8/25/10 AND THE PHASE I SHOPS DEVELOPMENT PREPARED BY WOLVERTON & ASSOCIATES LAST REVISED 2/24/11. CONTRACTOR SHALL FIELD VERIFY EXISTING CONDITIONS PRIOR TO STARTING CONSTRUCTION. IN THE EVENT OF A DISCREPANCY ADVERSELY AFFECTING CONSTRUCTION, THE CONTRACTOR SHALL NOTIFY THE OWNER PRIOR TO PROCEEDING.



11-174 V-2.dwg
 11-174 Locust Grove, GA Production Drawing 11-174 V-2.dwg
 8/25/10
 2/24/11

WWW.LDILLING.COM

Order Plans @