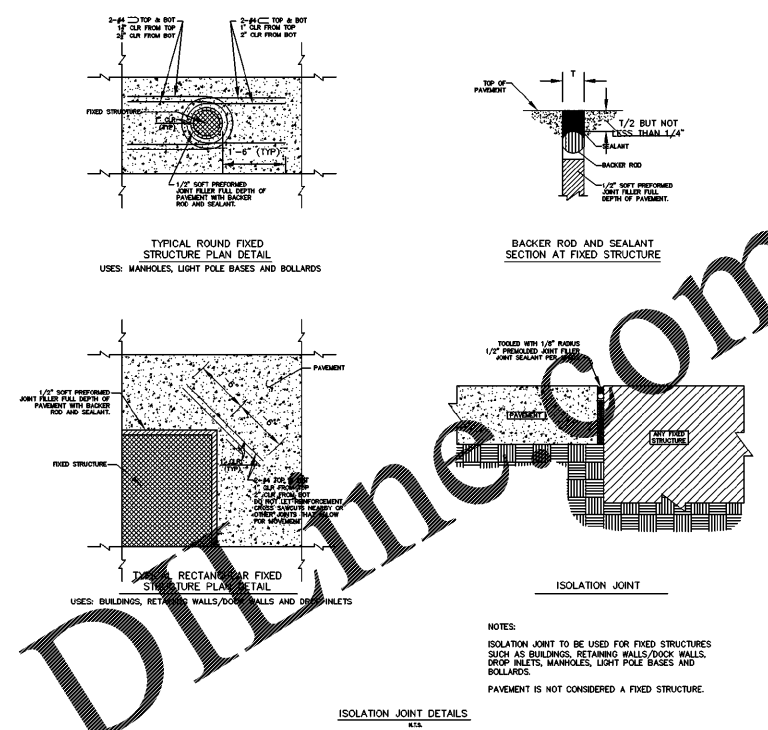
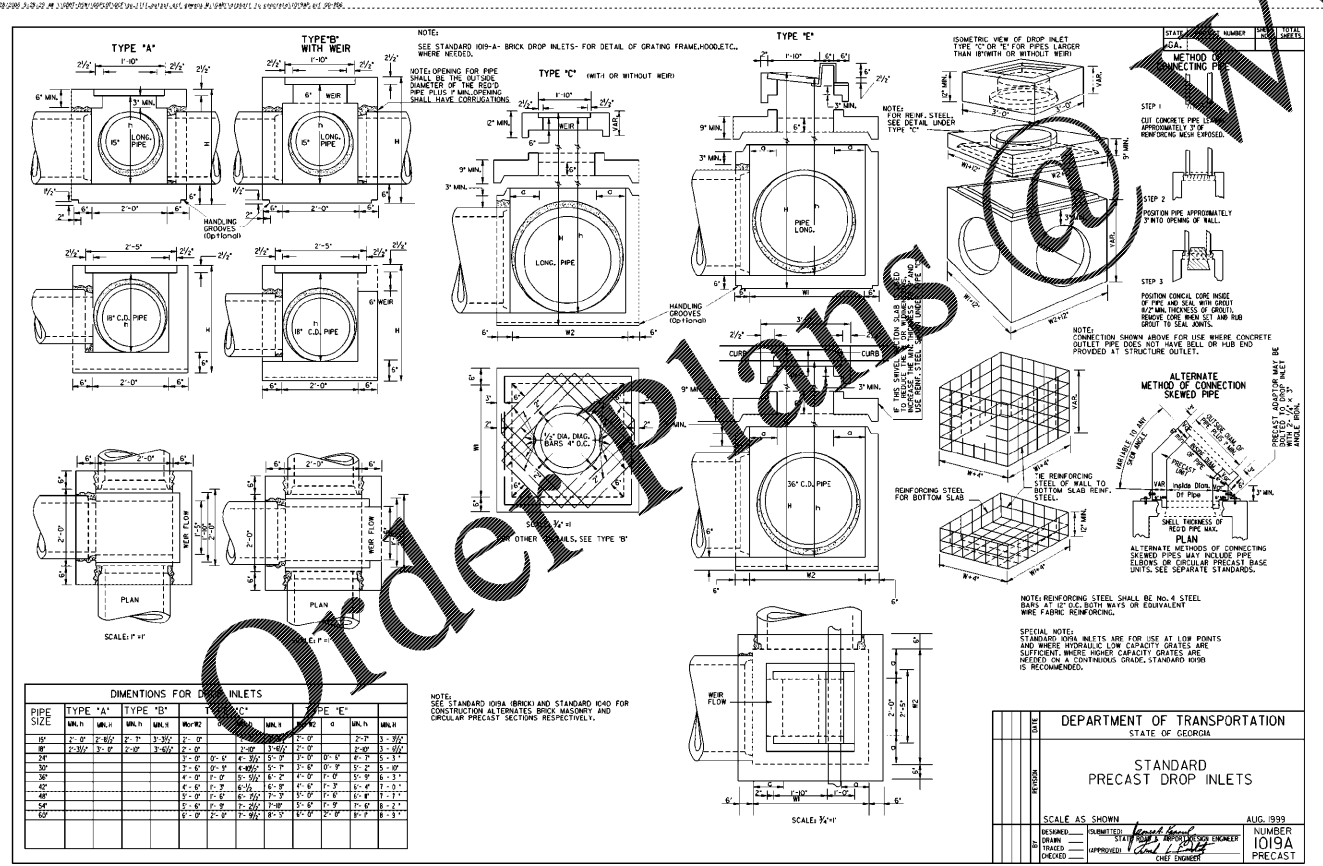


- GENERAL NOTES**
1. BEDDING SHALL BE CLASS I-A UNLESS OTHERWISE NOTED. IF UNDERMINED IS ANTICIPATED, THEY SHALL BE CLASS I-B COMPACTED TO SEE STANDARD PROCTOR.
 2. MANHOLES SHALL BE WORKED AROUND THE PIPE BY HAND TO ELIMINATE Voids AND SHALL BE CLASS I-A OR CLASS I-B OF CLASS I COMPACTED TO SEE PROCTOR.
 3. METAL BACKFILL SHALL BE CLASS I-A UNLESS OTHERWISE NOTED BY NOTE OR CLASS II COMPACTED TO SEE STANDARD PROCTOR.
 4. INITIAL BACKFILL NOT UNDER PAVED AREAS CAN BE CLASS II COMPACTED TO SEE STANDARD PROCTOR.
 5. FINAL BACKFILL SHALL BE CLASS I-A OR CLASS II COMPACTED AS NOTED IN NOTES 1, AND 4.
 6. FINAL BACKFILL NOT UNDER PAVED AREAS CAN BE CLASS II COMPACTED TO SEE STANDARD PROCTOR.
 7. ALL MATERIALS ARE CLASSIFIED IN ACCORDANCE WITH ASTM D 1557-LATEST EDITION.
 8. ALL MATERIALS SHALL BE INSTALLED IN MAXIMUM 6" LOOSE LAYS IN ACCORDANCE WITH ASTM D 1557-LATEST EDITION. OVERLAP SHALL BE COMPACTED NEAR JOINTS AND NEAR STRUCTURE.
 9. FILL SALVAGED FROM EXCAVATION SHALL BE FREE OF ROCKS, DRAGS AND NODS LARGER THAN 3".
 10. ALL TRENCH EXCAVATIONS SHALL BE SLOPED, SHORED, SHIELDED, BRACED OR OTHERWISE PROTECTED IN ACCORDANCE WITH OSHA REGULATIONS AND LOCAL ORDINANCES. (SEE SPECIFICATIONS)
- STORM SEWER TRENCH AND BEDDING**
N.T.S.



- NOTES**
- ISOLATION JOINT TO BE USED FOR FIXED STRUCTURES SUCH AS BUILDINGS, RETAINING WALLS, DOCK WALLS, DROP INLETS, MANHOLES, LIGHT POLE BASES AND BOLLARDS.
- PAVEMENT IS NOT CONSIDERED A FIXED STRUCTURE.



REVISIONS		BY

DEPARTMENT OF TRANSPORTATION
STATE OF GEORGIA

STANDARD PRECAST DROP INLETS

SCALE AS SHOWN AUG. 1999

NUMBER 1019A PRECAST

GDOT CURB INLET STD. 1019A (TYPE E)
SCALE: N.T.S.

GRADING AND DRAINAGE DETAILS

Wolverton & Associates
Consulting Engineers + Land Surveyors
6745 Sugarloaf Parkway - Suite 100 - Duluth, Georgia 30097
Phone: (770) 447-0669 Fax: (770) 447-0670
www.wolvertoninc.com

GSWCC LEVEL II
DESIGN PROFESSIONAL
CERTIFICATION #2963

Project Title
MARKET PLACE AT LOCUST GROVE SHOPS
LOCUST GROVE, HENRY COUNTY, GA
BY: STLC, LLC C/O VERDURA RESOURCES
ATLANTA, GA 30341

DRAWN BY DMH
CHECKED BY CLM
DATE 01/30/13
SCALE NO SCALE
JOB No. 11-174
SHEET NUMBER

D-2A
OF SHEETS