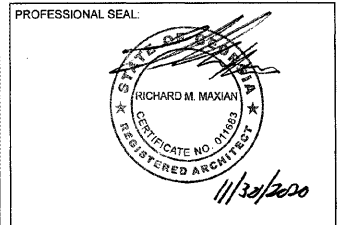


THIS DRAWING IS THE PROPERTY OF MAXDESIGN GROUP, AND IS NOT TO BE REPRODUCED IN WHOLE OR IN PART. IT IS NOT TO BE USED ON ANOTHER PROJECT AND SHALL BE RETURNED UPON REQUEST.



PROJECT TITLE:

**MARKET PLACE  
AT LOCUST  
GROVE SHOPS  
PHASE 2**

LOCUST GROVE, GEORGIA

PROJECT INFO:  
4959 BILL GARDNER PARKWAY  
LOCUST GROVE, GA 30248

OWNER:

**IP ILG, LLC**

**JACOB LANG**  
912.655.3438

**PRINT RECORD**

| Description       | Date       |
|-------------------|------------|
| ISSUED FOR PERMIT | 11.23.2020 |
|                   |            |
|                   |            |
|                   |            |

**REVISION**

| No. | Description | Date |
|-----|-------------|------|
|     |             |      |
|     |             |      |
|     |             |      |
|     |             |      |

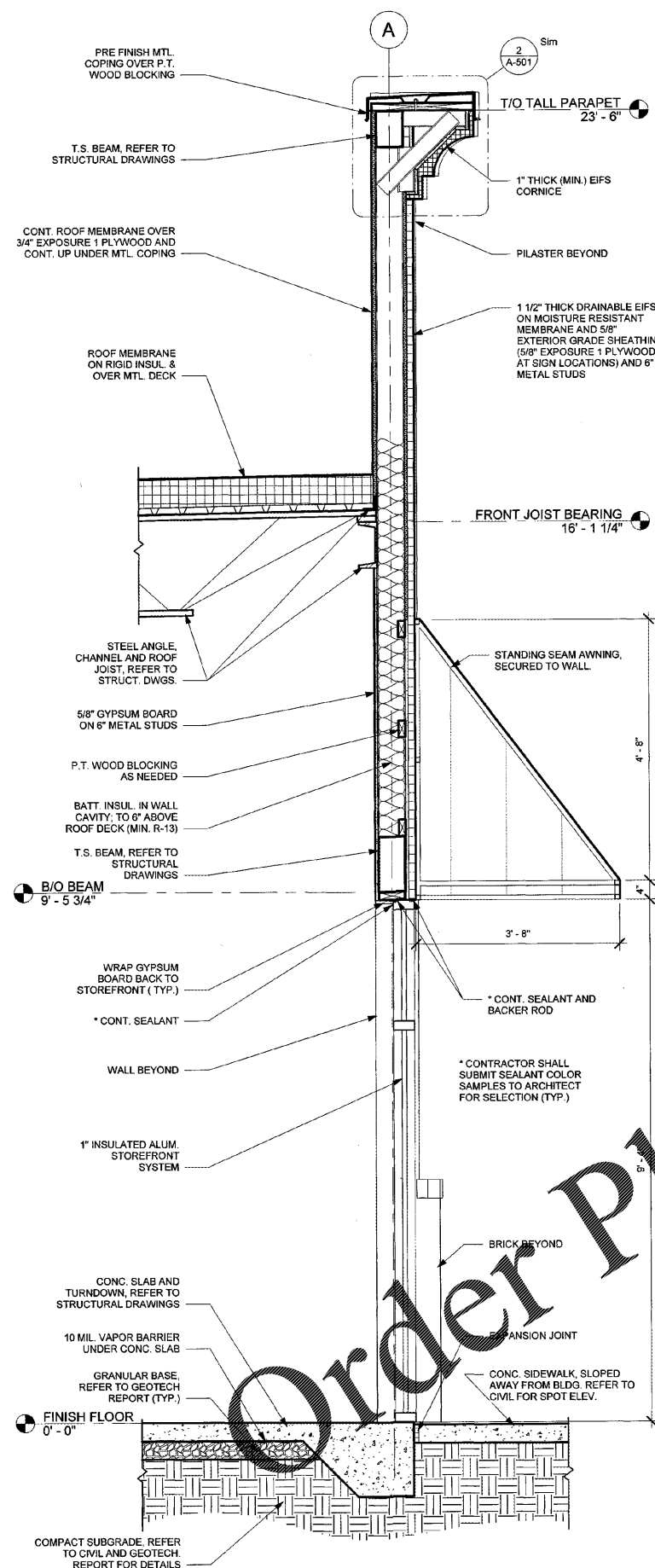
**BUILDING WALL SECTIONS**

|                |            |
|----------------|------------|
| Project number | D20-101    |
| Date           | 10/26/2020 |
| Drawn by       | B.C.R.     |
| Checked by     | R.M.M.     |

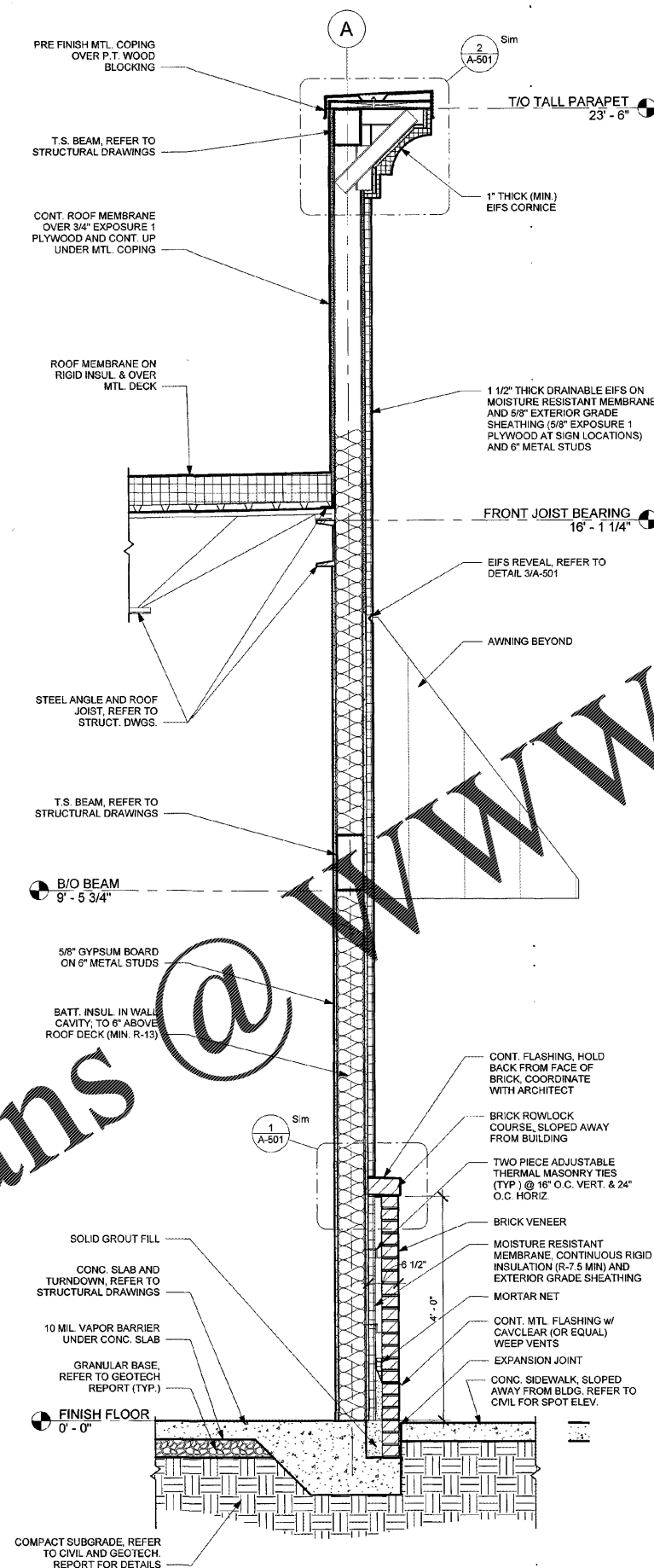
**A-302**

Scale: 3/4" = 1'-0"

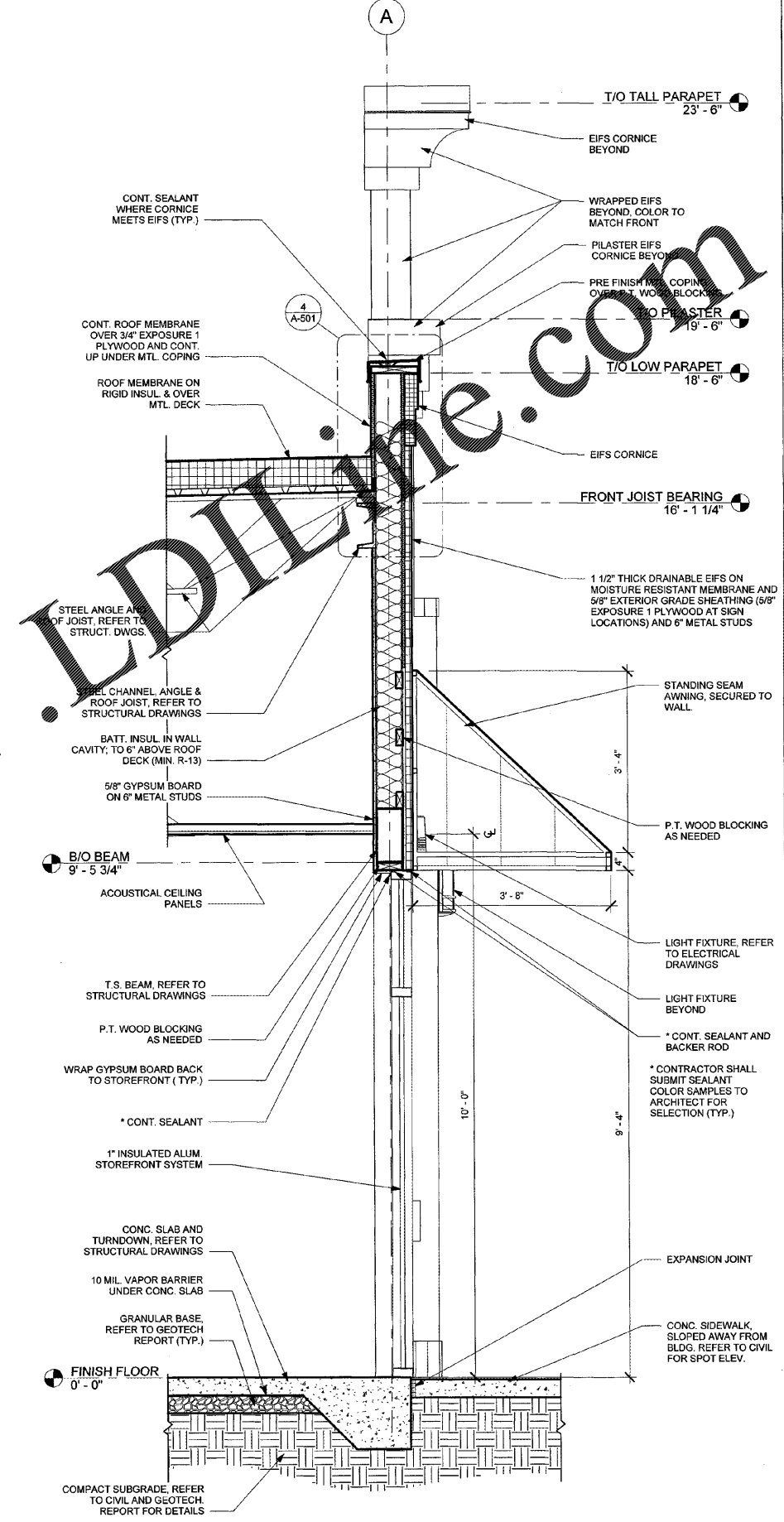
ISSUED FOR CONSTRUCTION



**3 SECTION AT HIGH PARAPET STOREFRONT**  
A-302 SCALE: 3/4" = 1'-0"



**2 SECTION AT HIGH PARAPET**  
A-302 SCALE: 3/4" = 1'-0"



**1 SECTION AT LOW PARAPET STOREFRONT**  
A-302 SCALE: 3/4" = 1'-0"

Order Plans @

WWW.LDLINE.COM