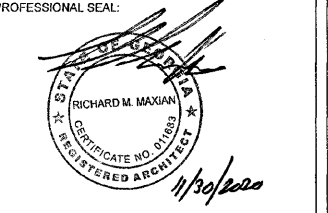


THIS DRAWING IS THE PROPERTY OF MAXDESIGN GROUP AND IS NOT TO BE REPRODUCED IN WHOLE OR IN PART. IT IS NOT TO BE USED ON ANOTHER PROJECT AND SHALL BE RETURNED UPON REQUEST.



PROJECT TITLE:

**MARKET PLACE
AT LOCUST
GROVE SHOPS
PHASE 2**

LOCUST GROVE, GEORGIA

PROJECT INFO:
4959 BILL GARDNER PARKWAY
LOCUST GROVE, GA 30248

OWNER:

IP ILG, LLC

JACOB LANG

912.655.3438

PRINT RECORD

Description	Date
ISSUED FOR PERMIT	11.23.2020

REVISION

No.	Description	Date

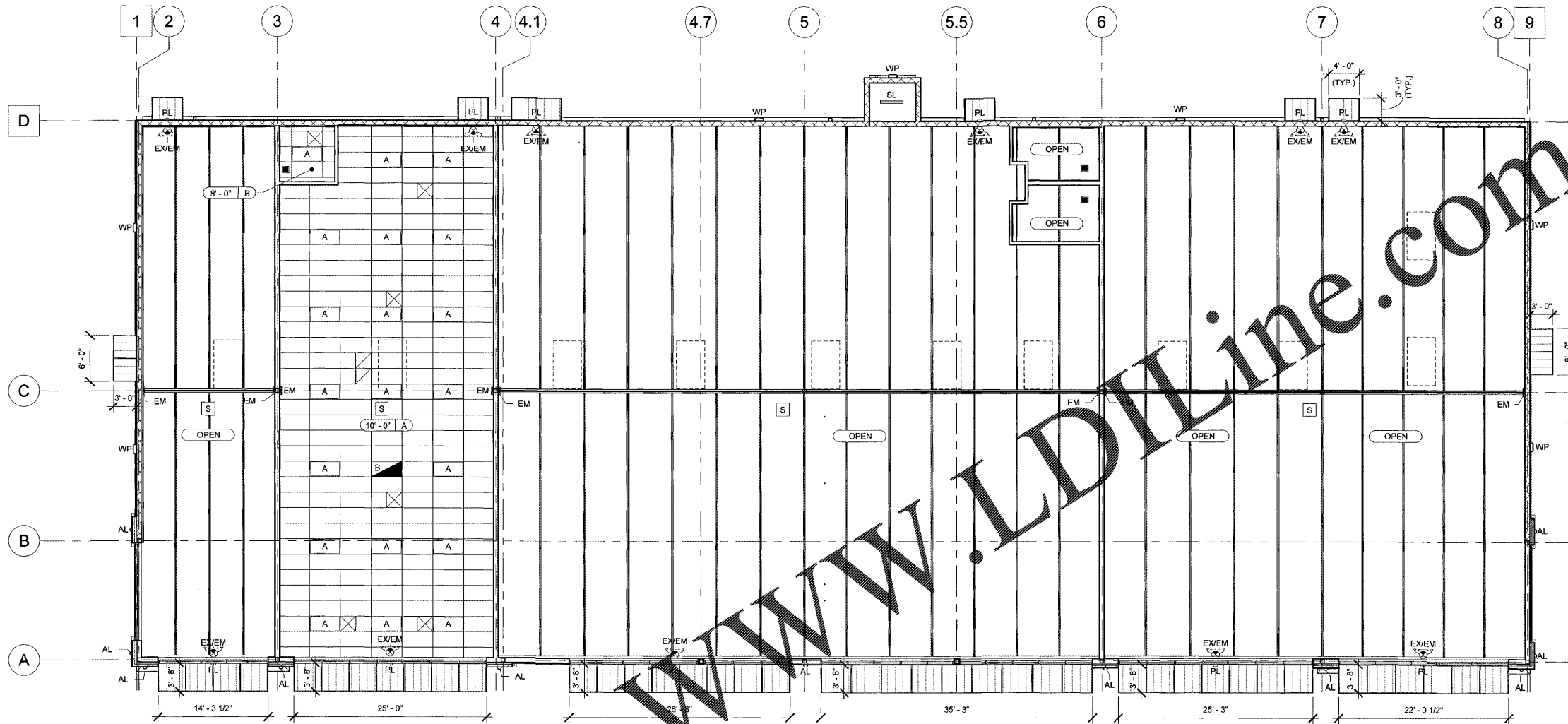
REFLECTED CEILING PLAN

Project number: D20-101
Date: 10/26/2020
Drawn by: B.C.R.
Checked by: R.M.M.

A-111

Scale: As Indicated

ISSUED FOR CONSTRUCTION



1 REFLECTED CEILING PLAN
A-111 SCALE: 1/8" = 1'-0"

REFLECTED CEILING PLAN LEGEND

- RESTROOM EMERGENCY LIGHT; REFER TO ELECTRICAL DRAWINGS
- ▧ 24" x 24" CEILING RETURN AIR REGISTER; SEE MECHANICAL DRAWINGS FOR DETAILS
- ⊗ 24" x 24" CEILING SUPPLY AIR DIFFUSER; SEE MECHANICAL DRAWINGS FOR DETAILS
- EM EMERGENCY LIGHT FIXTURE - REFER TO ELECTRICAL DRAWINGS
- EX/EM EMERGENCY COMBO LIGHT FIXTURE - REFER TO ELECTRICAL DRAWINGS
- ▲ LED ARCHITECTURAL SCENCE - INDESSA LIGHTING FIXTURE MOUNTED 9'-6" A.F.F. TO CENTER OF FIXTURE U.N.O. - REFER TO ELECTRICAL DRAWINGS
- A 2x4 LED FLAT PANEL LIGHT FIXTURE; REFER TO ELECTRICAL DRAWINGS
- B 2x4 LED FLAT PANEL NIGHT LIGHT FIXTURE; REFER TO ELECTRICAL DRAWINGS
- WP WALL PACK SECURITY LIGHT FIXTURE MOUNTED 13'-0" A.F.F. TO CENTER OF FIXTURE U.N.O. - REFER TO ELECTRICAL DRAWINGS
- PL PERSONNEL LIGHT FIXTURE WITH 90 MINUTE BATTERY MOUNTED ABOVE DOOR; REFER TO ELECTRICAL DRAWINGS AND SECTIONS FOR MOUNTING HEIGHTS
- SL LED STRIP LIGHT FIXTURE WITH EMERGENCY BATTERY; REFER TO ELECTRICAL DRAWINGS
- S SMOKE DETECTOR; REFER TO ELECTRICAL DRAWINGS

CEILING SCHEDULE

MARK	DESCRIPTION	HEIGHT	COMMENTS
A	24" x 48" ACOUSTICAL CEILING TILES - ARMSTRONG DUNE WITH PRELUDE 15/16" EXPOSED TEE GRID SYSTEMS (OR EQUAL)	10' - 0"	SEE NOTE 10
B	24" x 48" ACOUSTICAL CEILING TILES - ARMSTRONG DUNE WITH PRELUDE 15/16" EXPOSED TEE GRID SYSTEMS (OR EQUAL)	8' - 0"	SEE NOTE 10

- REFLECTED CEILING PLAN NOTES**
- REFER TO GENERAL NOTES AND SPECIFICATIONS FOR MORE INFORMATION.
 - REFER TO ENGINEERING DRAWINGS FOR HVAC AND ELECTRICAL FIXTURES, SPECIFICATIONS, LOCATIONS, AND DETAILS.
 - LIGHT FIXTURES SHOWN ON REFLECTED CEILING PLAN FOR LOCATION ONLY. DIMENSIONS INDICATE STARTING POINT OF GRID. IF NOT DIMENSIONED, CENTER GRID ON SPACE SIDE AS SHOWN. STARTING WITH A FILL TILE AT THE FRONT.
 - COORDINATE ALL ABOVE CEILING INSTALLATIONS TO PROVIDE DESIGN ELEMENTS AND FIXTURES AS SHOWN ON REFLECTED CEILING PLAN. CONFLICTS MAY REQUIRE INSTALLATION OF MECHANICAL, ELECTRICAL, OR PLUMBING ELEMENTS ABOVE TYPICAL MOUNTING HEIGHTS.
 - LOCATE ELECTRICAL DEVICES, LIFE SAFETY DEVICES, AND SPRINKLER HEADS IN CENTER OF ACOUSTICAL CEILING TILE. U.N.O.
 - CEILING HEIGHT IN RESTROOM IS 8'-0". U.N.O.
 - LOCATE SPRINKLER HEADS IN THE CENTER OF CEILING TILE. TYP.
 - SPRINKLER SYSTEM DESIGNED AND LAID OUT BY SPRINKLER CONTRACTOR AND SUBMITTED TO ARCHITECT AND LOCAL FIRE MARSHAL FOR REVIEW.
 - CONTRACTOR SHALL INSTALL CEILING GRID ONLY. TENANT WILL INSTALL CEILING TILES PROVIDED BY LANDLORD.

Order Plans @

WWW.LDILINE.COM