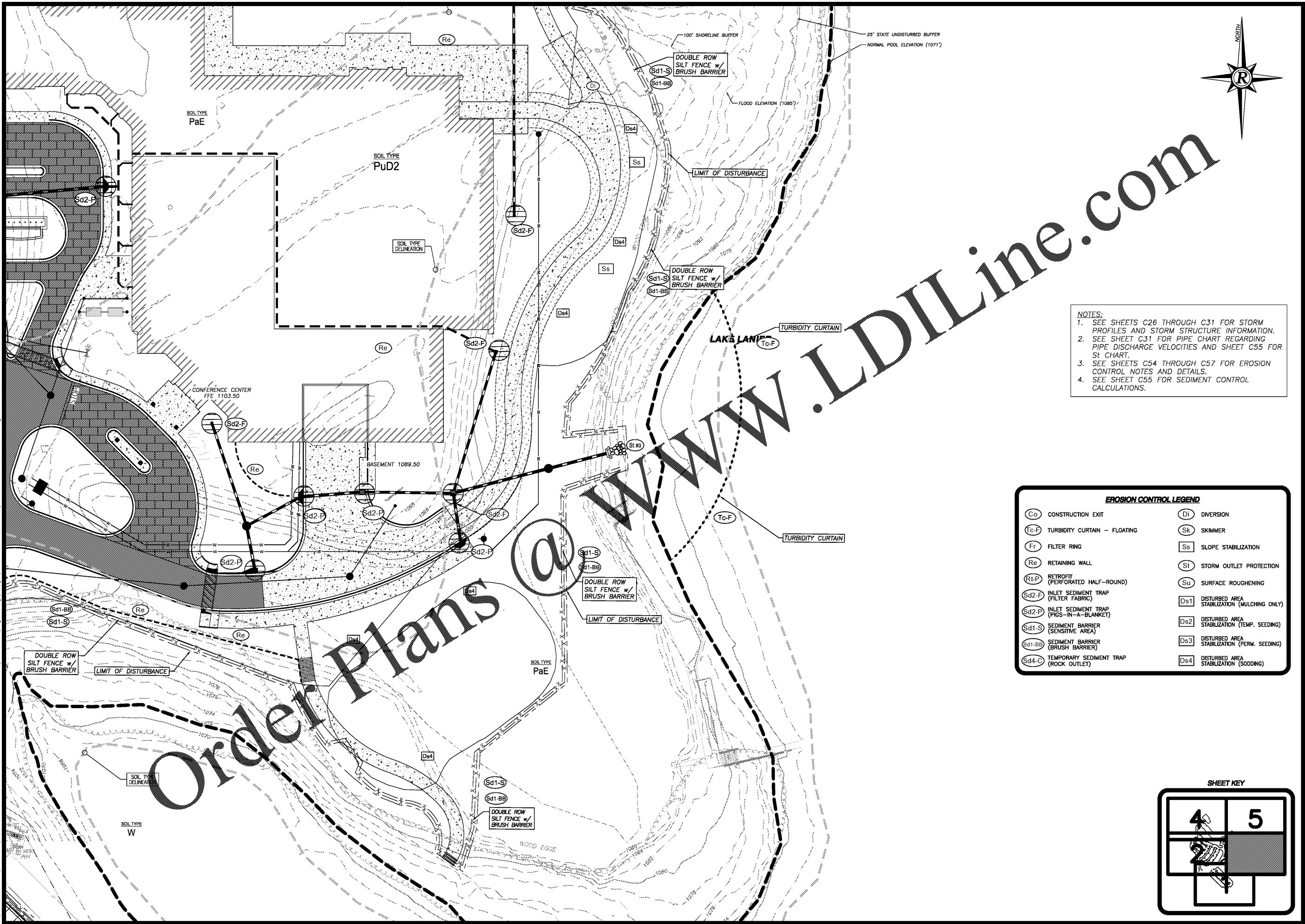


PLOT DATE: 12/11/20 2:37 PM
 R:\07-Production\2026124\2026124-ICC-01 - Lake Lanier Islands Conference Center -\Production\Engineering\Design\LI Conference Center\2026124-ICC-EROS-FINAL.dwg



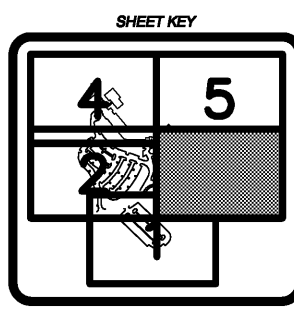
NOTES:
 1. SEE SHEETS C26 THROUGH C31 FOR STORM PROFILES AND STORM STRUCTURE INFORMATION.
 2. SEE SHEET C31 FOR PIPE CHART REGARDING PIPE DISCHARGE VELOCITIES AND SHEET C55 FOR SI CHART.
 3. SEE SHEETS C54 THROUGH C57 FOR EROSION CONTROL NOTES AND DETAILS.
 4. SEE SHEET C55 FOR SEDIMENT CONTROL CALCULATIONS.

EROSION CONTROL LEGEND			
(Co)	CONSTRUCTION EXIT	(Di)	DIVERSION
(Tc-F)	TURBIDITY CURTAIN - FLOATING	(Sk)	SKIMMER
(Fr)	FILTER RING	(Ss)	SLOPE STABILIZATION
(Re)	RETAINING WALL	(St)	STORM OUTLET PROTECTION
(Rt-P)	RETROFIT (PERFORATED HALF-ROUND)	(Su)	SURFACE ROUGHENING
(Sd2-F)	INLET SEDIMENT TRAP (FILTER FABRIC)	(Ds1)	DISTURBED AREA STABILIZATION (MULCHING ONLY)
(Sd2-P)	INLET SEDIMENT TRAP (PIGS-IN-A-BLANKET)	(Ds2)	DISTURBED AREA STABILIZATION (TEMP. SEEDING)
(Sd1-S)	SEDIMENT BARRIER (SENSITIVE AREA)	(Ds3)	DISTURBED AREA STABILIZATION (PERM. SEEDING)
(Sd1-BB)	SEDIMENT BARRIER (BRUSH BARRIER)	(Ds4)	DISTURBED AREA STABILIZATION (SODDING)
(Sd4-C)	TEMPORARY SEDIMENT TRAP (ROCK OUTLET)		

REVISIONS		
REV	DATE	DESCRIPTION

ANY CHANGES OR ALTERATIONS MADE TO THESE CONSTRUCTION DRAWINGS WITHOUT THE SIGNATURE AND SEAL OF THE PROFESSIONAL ENGINEER AND ANY LIABILITY ASSOCIATED THEREWITH ARE KEPT ON FILE FOR VERIFICATION OF ANY CHANGES.

GRAPHIC SCALE
 1" = 30'
 0' 30' 60'



SHEET
C50
 OF
C66
 DATE: 12-11-20
 SCALE: 1"=30'
 JOB NO.: 6268124-ICC-01
 REV'D BY: JNC
 DRAWN BY: JNC

Rochester & Associates, Inc.
 288 Highway 215, Suite A • Fayetteville, Georgia 30214
 (770) 424-1212 (770) 424-1214 fax • www.rochesterinc.com

EROSION CONTROL PLAN 3 - FINAL PH3
 FOR:
LANIER ISLANDS CONFERENCE CENTER
 LAND LOT 380
 7TH DISTRICT
 CITY OF BUFORD, HALL COUNTY, GEORGIA

WWW.LDILine.com

Order Plans @