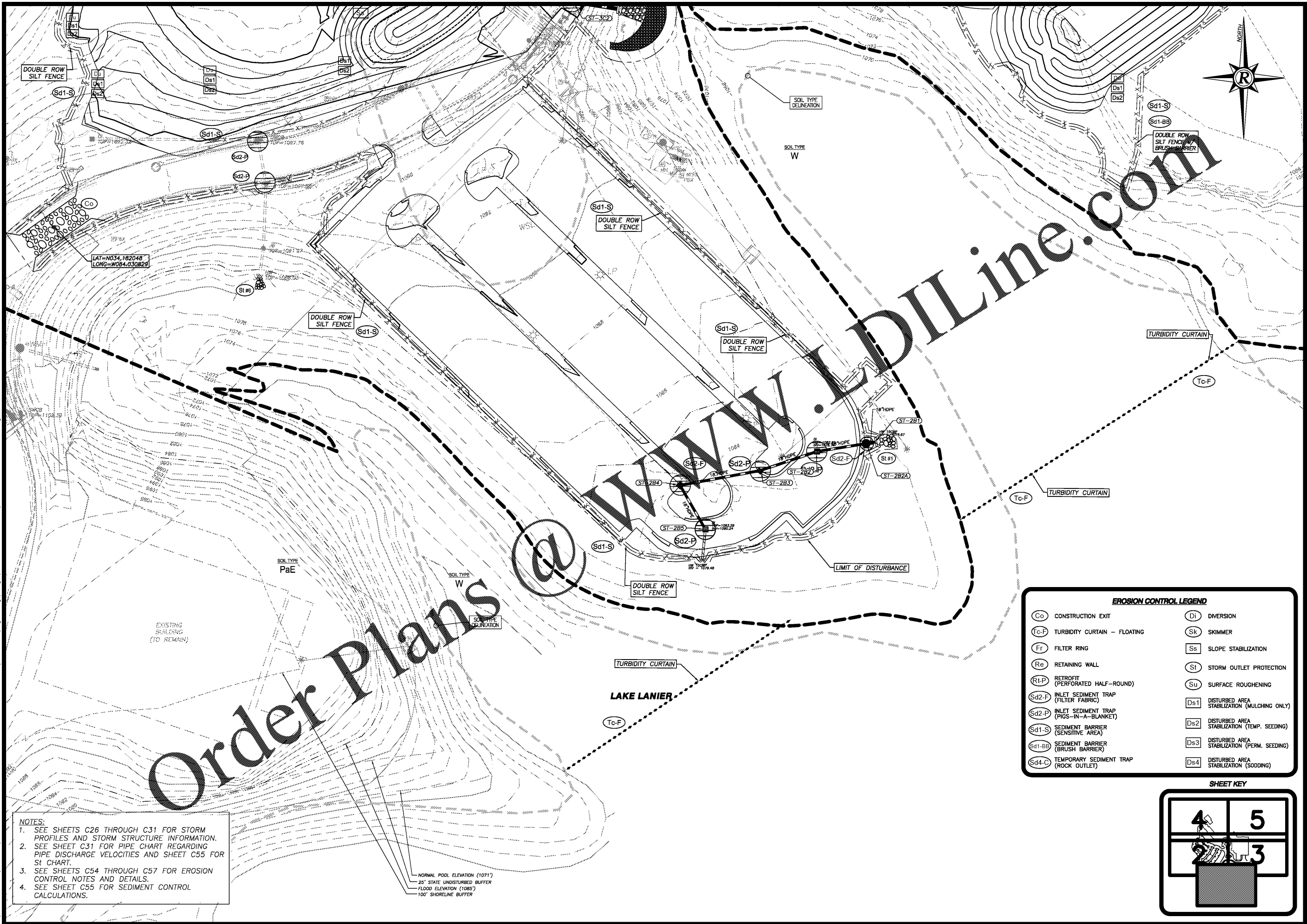


PLOT DATE: 12/11/20 2:34 PM
 R:\07-Production\0206124\0206124-ICC.01 - Lake Lanier Islands Conference Center -\Production\Engineering\Design\LI Conference Center\0206124-ICC-EROSION\INTER.dwg

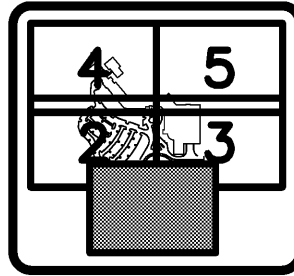


NOTES:
 1. SEE SHEETS C26 THROUGH C31 FOR STORM PROFILES AND STORM STRUCTURE INFORMATION.
 2. SEE SHEET C31 FOR PIPE CHART REGARDING PIPE DISCHARGE VELOCITIES AND SHEET C55 FOR ST CHART.
 3. SEE SHEETS C54 THROUGH C57 FOR EROSION CONTROL NOTES AND DETAILS.
 4. SEE SHEET C55 FOR SEDIMENT CONTROL CALCULATIONS.

NORMAL POOL ELEVATION (1071')
 25' STATE UNDISTURBED BUFFER
 FLOOD ELEVATION (1085')
 100' SHORELINE BUFFER

EROSION CONTROL LEGEND

(Co)	CONSTRUCTION EXIT	(Di)	DIVERSION
(Tc-F)	TURBIDITY CURTAIN - FLOATING	(Sk)	SKIMMER
(Fr)	FILTER RING	(Ss)	SLOPE STABILIZATION
(Re)	RETAINING WALL	(St)	STORM OUTLET PROTECTION
(R1-P)	RETROFIT (PERFORATED HALF-ROUND)	(Su)	SURFACE ROUGHENING
(Sd2-F)	INLET SEDIMENT TRAP (FILTER FABRIC)	(Ds1)	DISTURBED AREA STABILIZATION (MULCHING ONLY)
(Sd2-P)	INLET SEDIMENT TRAP (PIGS-IN-A-BLANCKET)	(Ds2)	DISTURBED AREA STABILIZATION (TEMP. SEEDING)
(Sd1-S)	SEDIMENT BARRIER (SENSITIVE AREA)	(Ds3)	DISTURBED AREA STABILIZATION (PERM. SEEDING)
(Sd1-BB)	SEDIMENT BARRIER (BRUSH BARRIER)	(Ds4)	DISTURBED AREA STABILIZATION (SODDING)
(Sd4-C)	TEMPORARY SEDIMENT TRAP (ROCK OUTLET)		



EROSION CONTROL PLAN 1 - INTERMEDIATE PH2
 FOR:
LANIER ISLANDS CONFERENCE CENTER
 LAND LOT 380
 7TH DISTRICT
 CITY OF BUFORD, HALL COUNTY, GEORGIA

REVISIONS

NO.	DATE	DESCRIPTION

ANY CHANGES OR ALTERATIONS MADE TO THESE CONSTRUCTION DRAWINGS WITHOUT THE SIGNATURE OF THE ENGINEER OR ARCHITECT ASSOCIATES, INC. VOID. THE SEAL SHOWN HEREON AND ANY LIABILITY ASSOCIATED THEREWITH ARE KEPT ON FILE FOR VERIFICATION OF ANY CHANGES.

GRAPHIC SCALE
 1" = 30'
 0' 30' 60'



SHEET
C41
 OF
C66
 DATE: 12-11-20
 SCALE: 1"=30'
 JOB NO.: 0206124-ICC.01
 REV'D BY: JNC
 DRAWN BY: JRS