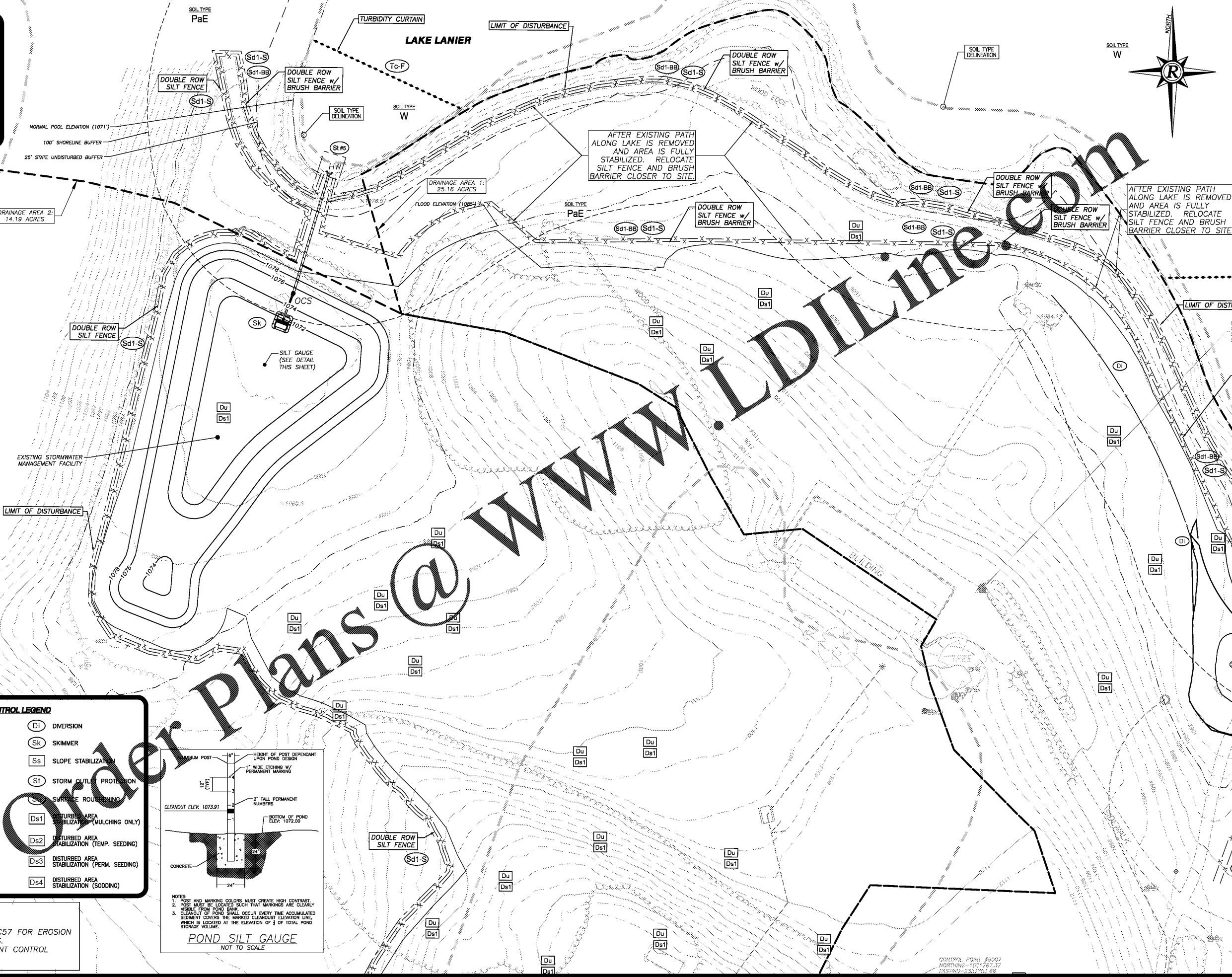
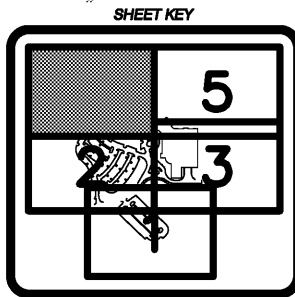
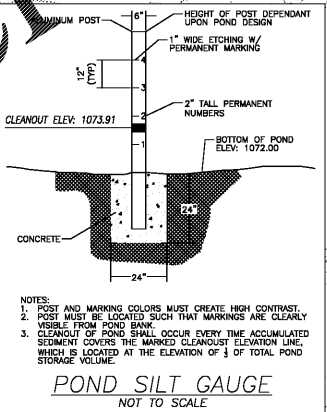


PLOT DATE: 12/11/20 2:33 PM
 RE: LDI-Production\2206124\2206124-ICC-01 - Lake Lanier Islands Conference Center -\Production\Engineering\Design\LDI Conference Center\2206124-ICC-EROS-INITIAL.dwg



EROSION CONTROL LEGEND

- | | |
|---|--|
| (Co) CONSTRUCTION EXIT | (Di) DIVERSION |
| (Tc-F) TURBIDITY CURTAIN - FLOATING | (Sk) SKIMMER |
| (Fr) FILTER RING | (Ss) SLOPE STABILIZATION |
| (Re) RETAINING WALL | (St) STORM OUTLET PROTECTION |
| (Rt-P) RETROFIT (PERFORATED HALF-ROUND) | (SR) SURFACE ROUGHENING |
| (Sd2-F) INLET SEDIMENT TRAP (FILTER FABRIC) | (Sd1) DISTURBED AREA STABILIZATION (MULCHING ONLY) |
| (Sd2-P) INLET SEDIMENT TRAP (PIGS-IN-A-BLANKET) | (Ds2) DISTURBED AREA STABILIZATION (TEMP. SEEDING) |
| (Sd1-S) SEDIMENT BARRIER (SENSITIVE AREA) | (Ds3) DISTURBED AREA STABILIZATION (PERM. SEEDING) |
| (Sd1-BB) SEDIMENT BARRIER (BRUSH BARRIER) | (Ds4) DISTURBED AREA STABILIZATION (SODDING) |
| (Sd4-C) TEMPORARY SEDIMENT TRAP (ROCK OUTLET) | |



NOTES:
 1. POST AND MARKING COLORS MUST CREATE HIGH CONTRAST.
 2. POST MUST BE LOCATED SUCH THAT MARKINGS ARE CLEARLY VISIBLE FROM POND BANK.
 3. CLEANOUT OF POND SHALL OCCUR EVERY TIME ACCUMULATED SEDIMENT COVERS THE MARKED CLEANOUT ELEVATION LINE WHICH IS LOCATED AT THE ELEVATION OF 1/3 OF TOTAL POND STORAGE VOLUME.

POND SILT GAUGE
NOT TO SCALE

- NOTES:**
- SEE SHEETS C54 THROUGH C57 FOR EROSION CONTROL NOTES AND DETAILS.
 - SEE SHEET C55 FOR SEDIMENT CONTROL CALCULATIONS.

Rochester & Associates, Inc.
 288 Highway 215, Suite 110 • Reynolds, Georgia 30214
 (770) 822-1122 • (770) 822-1123 • www.racheston.com

EROSION CONTROL PLAN 4 - INITIAL PH1
 FOR:
LANIER ISLANDS CONFERENCE CENTER
 LAND LOT 390
 7TH DISTRICT
 CITY OF BUFORD, HALL COUNTY, GEORGIA

NO.	REVISIONS	REV. DATE	DESCRIPTION

ANY CHANGES OR ALTERATIONS MADE TO THESE CONSTRUCTION DRAWINGS WITHOUT THE SIGNATURE AND SEAL OF THE REGISTERED PROFESSIONAL ENGINEER AND ANY LIABILITY ASSOCIATED THEREWITH ARE KEPT ON FILE FOR VERIFICATION OF ANY CHANGES.

GRAPHIC SCALE
 1" = 30'
 0' 30' 60'



SHEET
C37
 OF
C66
 DATE: 12-11-20
 SCALE: 1"=30'
 JOB NO.: 6206124-ICC-01
 REV'D BY: JNC
 DRAWN BY: JNC