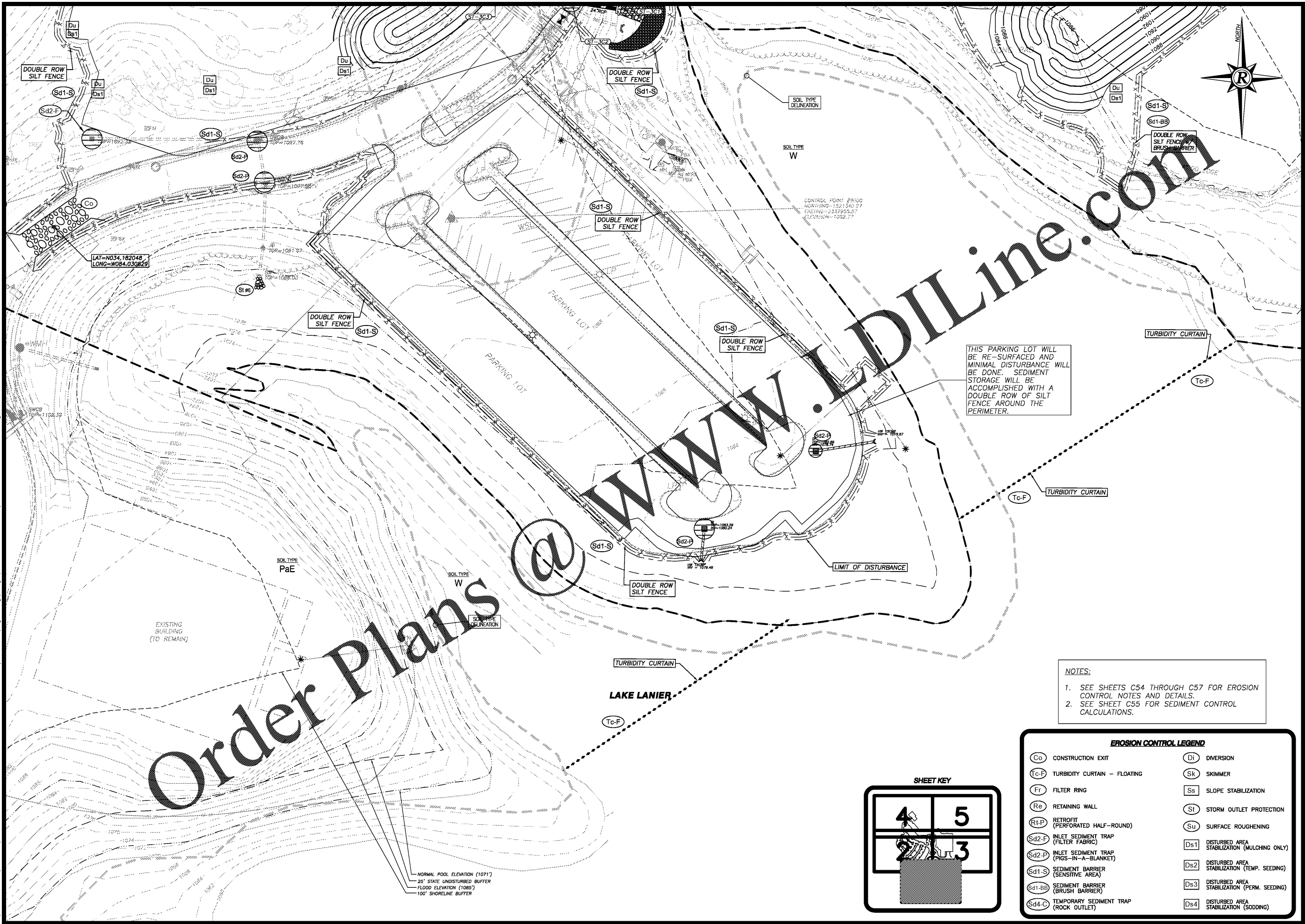


PLOT DATE: 12/11/20 2:33 PM  
 R: (D:\Production\2020\20201214\20201214-ICC-01 - Lake Lanier Islands Conference Center -\Production\Engineering\Design\LI Conference Center\20201214-ICC-EROS\_INITIAL.dwg



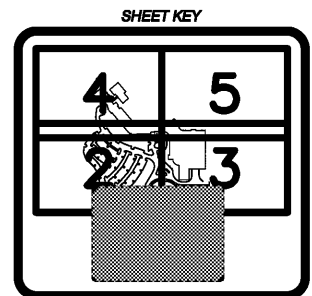
Order Plans @

THIS PARKING LOT WILL BE RE-SURFACED AND MINIMAL DISTURBANCE WILL BE DONE. SEDIMENT STORAGE WILL BE ACCOMPLISHED WITH A DOUBLE ROW OF SILT FENCE AROUND THE PERIMETER.

NOTES:  
 1. SEE SHEETS C54 THROUGH C57 FOR EROSION CONTROL NOTES AND DETAILS.  
 2. SEE SHEET C55 FOR SEDIMENT CONTROL CALCULATIONS.

**EROSION CONTROL LEGEND**

(Co)	CONSTRUCTION EXIT	(Di)	DIVERSION
(Tc-F)	TURBIDITY CURTAIN - FLOATING	(Sk)	SKIMMER
(Fr)	FILTER RING	(Ss)	SLOPE STABILIZATION
(Re)	RETAINING WALL	(St)	STORM OUTLET PROTECTION
(R1-P)	RETROFIT (PERFORATED HALF-ROUND)	(Su)	SURFACE ROUGHENING
(Sd2-F)	INLET SEDIMENT TRAP (FILTER FABRIC)	(Ds1)	DISTURBED AREA STABILIZATION (MULCHING ONLY)
(Sd2-P)	INLET SEDIMENT TRAP (PIGS-IN-A-BLANKET)	(Ds2)	DISTURBED AREA STABILIZATION (TEMP. SEEDING)
(Sd1-S)	SEDIMENT BARRIER (SENSITIVE AREA)	(Ds3)	DISTURBED AREA STABILIZATION (PERM. SEEDING)
(Sd1-BB)	SEDIMENT BARRIER (BRUSH BARRIER)	(Ds4)	DISTURBED AREA STABILIZATION (SOODING)
(Sd4-C)	TEMPORARY SEDIMENT TRAP (ROCK OUTLET)		



EROSION CONTROL PLAN 1 - INITIAL PHASE  
 FOR:  
**LANIER ISLANDS CONFERENCE CENTER**  
 LAND LOT 380  
 7TH DISTRICT  
 CITY OF BUFORD, HALL COUNTY, GEORGIA

**REVISIONS**

NO.	REV.	DATE	DESCRIPTION

ANY CHANGES OR ALTERATIONS MADE TO THESE CONSTRUCTION DRAWINGS WITHOUT THE SIGNATURE AND SEAL OF THE PROFESSIONAL ENGINEER AND ANY LIABILITY ASSOCIATED THEREWITH ARE KEPT ON FILE FOR VERIFICATION OF ANY CHANGES.  
 GRAPHIC SCALE: 1" = 30', 0", 30', 60'



SHEET **C34** OF **C66**  
 DATE: 12-11-20  
 SCALE: 1"=30'  
 JOB NO.: 20201214-ICC-01  
 REV'D BY: JNC  
 DRAWN BY: JRS