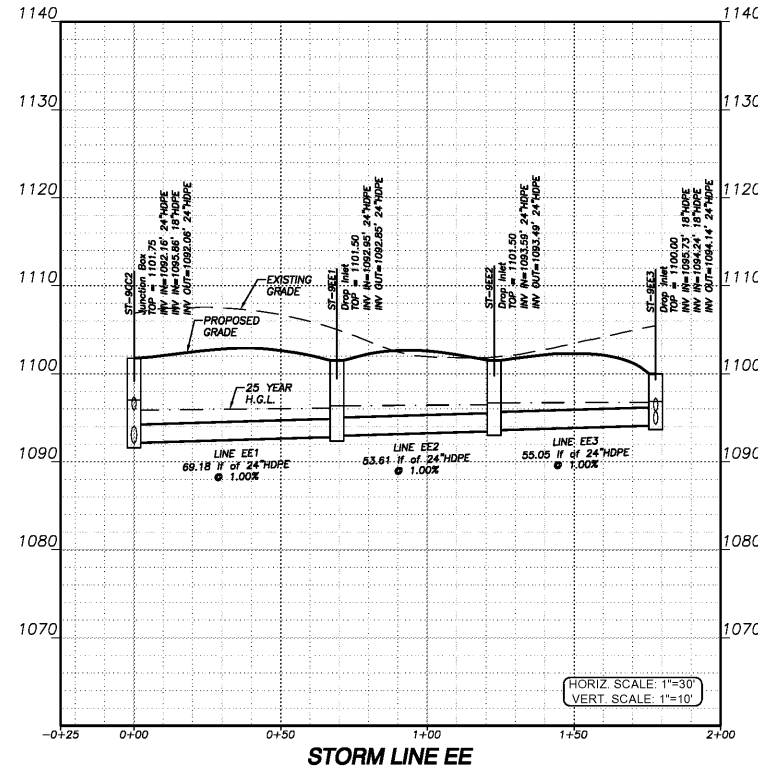
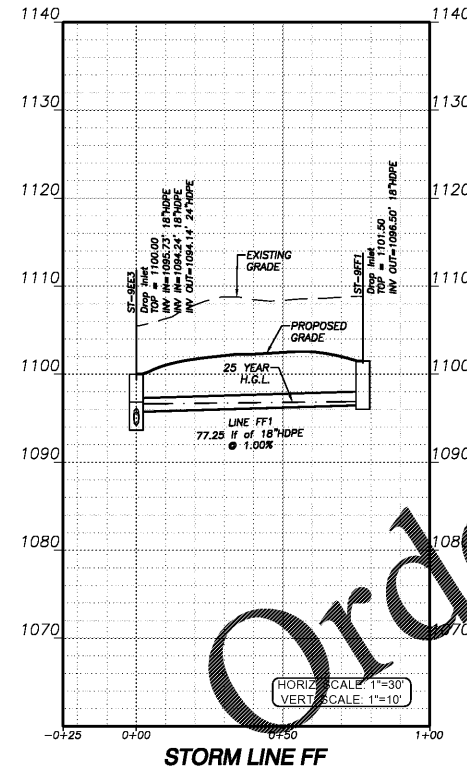


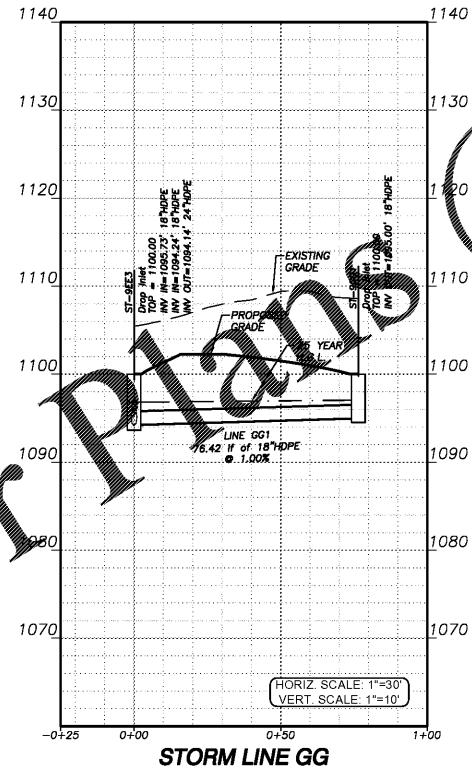
STORM LINE DD



STORM LINE EE



STORM LINE FF



STORM LINE GG

PIPE CHART											25 YEAR FLOW DATA				
Line ID	Inlet ID	Line Size (in)	Line Length (ft)	Line Slope (%)	Manning's n	Drainage Area (ac)	Runoff Coeff (C)	Inlet Time (min)	Tc (min)	Inlet System (in/hr)	Incremental Q (cfs)	Known Q (cfs)	Total Runoff (cfs)	Velocity (ft/s)	Capacity (cfs)
B1	B2A	18	6.77	1.03	0.012	0	0	0	5.9	0	8.85	0	0	0.5	11.56
B2A	B2	18	36.433	0.19	0.012	0.55	0.98	5	5.8	9.36	8.89	5.04	0	1.7	4.99
B2	B3	18	43.895	1.5	0.012	0.54	0.61	5	5.6	9.36	8.99	3.08	0	7	13.95
B3	B4	18	59.798	1.17	0.012	0.07	0.61	5	5.3	9.36	9.21	0.4	0	4.54	12.31
B4	B5	18	37.253	0.99	0.012	0.46	0.98	5	5	9.36	9.36	0	0	4.22	11.34
C2	C2	24	33.384	3.15	0.012	0	0	0	0.1	0	0	0	0	12.29	43.46
C3	C3	24	63.537	4.72	0.012	0	0	0	0	0	0	0	0	16.82	53.24
D1	D2	18	25.608	0.98	0.012	0.2	0.98	5	5.6	9.36	9.04	0	0	3.37	11.24
D2	D3	18	31.209	1	0.011	0.18	0.98	5	5	9.36	9	1.65	0	1.65	12.39
E1	E2	36	18.449	0.49	0.012	0.21	0.98	5	10.1	9.36	7.13	1.93	0	24.89	50.45
E2	E3	24	58.501	1.01	0.012	0.22	0.98	5	7.7	9.36	8.08	2.02	0	13.96	24.61
E3	E4	24	74.417	1.49	0.012	0.16	0.98	5	7.2	9.36	8.08	1.47	0	12.42	29.93
F1	F1	18	117.306	1.5	0.012	0.2	0.98	5	7	9.36	8.44	1.83	0	10.2	8.61
F2	F2	18	90.926	2.52	0.012	0.17	0.98	5	7	9.36	9.36	1.56	0	1.56	18.05
I1	I1	18	88.359	2	0.012	0.2	0.98	5	9.1	9.36	7.47	2.02	0	2.12	16.1
I2	I2	18	89.005	2	0.012	0.07	0.98	5	7.5	9.36	9.36	0.64	0	0.64	16.09
G1	G1	18	102.988	1.25	0.012	0.11	0.98	5	5.2	9.36	9.26	1.01	0	7.84	12.73
G2	G2	18	37.839	1	0.012	0.21	0.61	5	5	9.36	9.36	6.91	0	6.91	11.4
H2	H2	36	129.559	1	0.012	0	0	0	7.1	0	8.26	0	0	10.52	72.37
J1	J1	18	23	7.65	0.012	0.2	0.98	5	5	9.36	9.36	1.19	0	1.19	31.47
E4	E5	18	103.596	4.74	0.012	0.15	0.98	5	5	9.36	9.36	1.38	0	1.38	24.77
H3	H3	24	74.006	1	0.012	0.42	0.98	5	6.7	9.36	8.43	3.76	0	9.67	24.5
K1	K1	18	118.6	0.88	0.012	0.43	0.5	5	5	9.36	9.36	2.01	0	2.01	10.65
L1	L1	18	156	0.8	0.012	1.06	0.5	5	5	9.36	9.36	4.96	0	4.96	11.1
M1	M2	24	31.783	9.72	0.012	0.2	0.98	5	5.7	9.36	8.95	1.83	0	11.48	76.4
M2	M3	24	121.682	1.04	0.012	0.2	0.98	5	5.1	9.36	9.3	1.83	0	10.11	24.93
M3	M4	24	14.522	1.03	0.012	1.46	0.61	5	5	9.36	9.36	8.34	0	8.34	24.9
N1	N2	24	44	1.01	0.011	0	0	0	7.2	0	8.27	0	0	12.49	21.17
N2	N3	18	72.23	1.65	0.012	0.14	0.98	5	7	9.36	8.29	1.28	0	12.6	14.6
N3	N4	18	66.93	1.96	0.012	0.1	0.98	5	6.8	9.36	8.4	0.92	0	8.4	15.91
N4	N5	18	45.208	0.82	0.012	0.24	0.98	5	6.6	9.36	8.48	2.2	0	7.64	10.29
N5	N6	18	45.141	5.14	0.012	0	0	0	6.4	0	8.59	0	0	5.72	25.79
N6	N7	18	33.199	3.28	0.012	0.5	0.98	5	5	9.36	9.36	4.59	0	4.59	20.61
O1	HH1	18	79.724	5	0.012	0.18	0.98	5	5	9.36	9.36	1.65	0	1.65	8.1
O1	O1	18	108.349	6.89	0.012	0.33	0.98	5	5	9.36	9.36	3.03	0	3.03	29.87
P1	P1	18	38.083	1.39	0.012	0.06	0.98	5	5	9.36	9.36	0.55	0	0.55	13.42
Q1	Q2	18	31.115	10	0.011	0	0	0	7	0	8.31	0	0	8.14	39.24
Q2	Q3	18	36.773	9.46	0.012	0	0	0	6.9	0	8.37	0	0	8.2	16.15
Q3	Q4	18	10.637	9.4	0.012	0	0	0	6.8	0	8.38	0	0	8.27	6.5
R1	R1	18	160.742	1.59	0.012	0.28	0.98	5	5	9.36	9.36	2.57	0	2.57	6.14
S1	S1	18	157.794	2.57	0.012	0.72	0.98	5	5	9.36	9.36	6.6	0	6.6	9.49
T2	T2	36	56.986	1.19	0.012	0	0	0	10	0	7.15	0	0	40.52	10.02
T3	T3	36	72.597	0.5	0.012	0	0	0	9.8	0	7.21	0	0	40.88	8
T4	T4	30	131.759	7.6	0.012	0.49	0.98	5	7.1	9.36	8.27	4.49	0	22.43	18.98
T5	T5	24	157.727	2.5	0.011	0.22	0.98	5	6.6	9.36	8.48	2.02	0	17.53	6.47
X1	X1	18	53.432	3.99	0.012	0.3	0.98	5	6.4	9.36	8.58	2.75	0	7.23	11.41
X2	X2	18	83.801	2.39	0.012	0.36	0.98	5	5.9	9.36	8.83	3.3	0	4.84	8.49
X3	X3	18	58.104	5.89	0.012	0.32	0.61	5	5	9.36	9.36	1.83	0	1.83	1.78
U1	U1	18	68.909	1.89	0.012	0.39	0.98	5	6.3	9.36	8.63	3.58	0	8.71	9.08
U2	U2	18	74.676	0.99	0.012	0.3	0.98	5	6	9.36	8.83	2.75	0	5.54	3.84
U3	U3	18	100.722	1	0.012	0.34	0.98	5	5	9.36	9.36	3.12	0	3.12	2.79
AA1	AA1	30	167.333	0.5	0.011	0.06	0.98	5	9.3	9.36	7.4	0.55	0	21.89	5.25
CC1	CC1	24	106.818	10	0.012	0	0	0	7.3	0	8.17	0	0	14.96	19.05
CC2	CC2	24	29.317	4.98	0.012	0	0	0	7.2	0	8.21	0	0	15.04	14.85
EE1	EE1	24	69.179	1	0.012	0.27	0.98	5	7	9.36	8.33	2.48	0	12.73	5.91
EE2	EE2	24	53.611	1.01	0.012	0.32	0.98	5	6.7	9.36	8.45	2.94	0	10.68	5.52
EE3	EE3	24	55.047	1.1	0.012	0.12	0.98	5	6.4	9.36	8.61	1.1	0	8.18	4.78
FF1	FF1	18	77.251	1	0.012	0.18	0.98	5	5	9.36	9.36	1.65	0	1.65	4.58
DD1	DD1	18	11.451	1.22	0.012	0.31	0.98	5	5	9.36	9.36	2.84	0	2.84	5.75
GG1	GG1	18	76.416	0.99	0.012	0.67	0.98	5	5	9.36	9.36	6.15	0	6.15	5.42
V1	V1	18	64.323	2.01	0.012	0.17	0.98	5	5	9.36	9.36	1.56	0	1.56	5.77
BB1	BB1	30	90.81	0.5	0.011	0	0	0	8.4	0	7.71	0	0	8.22	2.7
BB2	BB2	30	40.97	0.49	0.012	0.29	0.5	5	8.1	9.36	7.86	1.36	0	8.38	5.37
BB3	BB3	24	100.823	0.5	0.012	0.21	0.98	5	7.4	9.36	8.13	1.93	0	7.49	5.29
BB4	BB4	24	138.172	0.51	0.012	0.41	0.98	5	6.3	9.36	8.65	3.76	0	6.19	4.7
BB5	BB5	24	72.752	2.83	0.012	0.32	0.98	5	5	9.36	9.36	2.94	0	2.94	2.59
Z1	Z2	30	84	4.76	0.011	0	0	0	0	0	0	33.75	33.75	0	6.88



STORM PROFILES
 FOR:
**LANIER ISLANDS
 CONFERENCE CENTER**
 LAND LOT 380
 7TH DISTRICT
 CITY OF BUFORD, HALL COUNTY, GEORGIA

REV	DATE	DESCRIPTION

ANY CHANGES OR ALTERATIONS MADE TO THESE CONSTRUCTION DRAWINGS WITHOUT THE SIGNATURE AND SEAL OF THE PROFESSIONAL ENGINEER ARE VOID. ANY LIABILITY ASSOCIATED WITH THESE DRAWINGS IS THE SOLE RESPONSIBILITY OF THE PROFESSIONAL ENGINEER. ANY CHANGES ARE KEPT ON FILE FOR VERIFICATION OF ANY CHANGES.



SHEET
C31
 OF
C66
 DATE: 12-11-20
 SCALE: 02/81/24/ICC-01
 JOB NO.:
 REV'D BY: JNC
 DRAWN BY: JRS