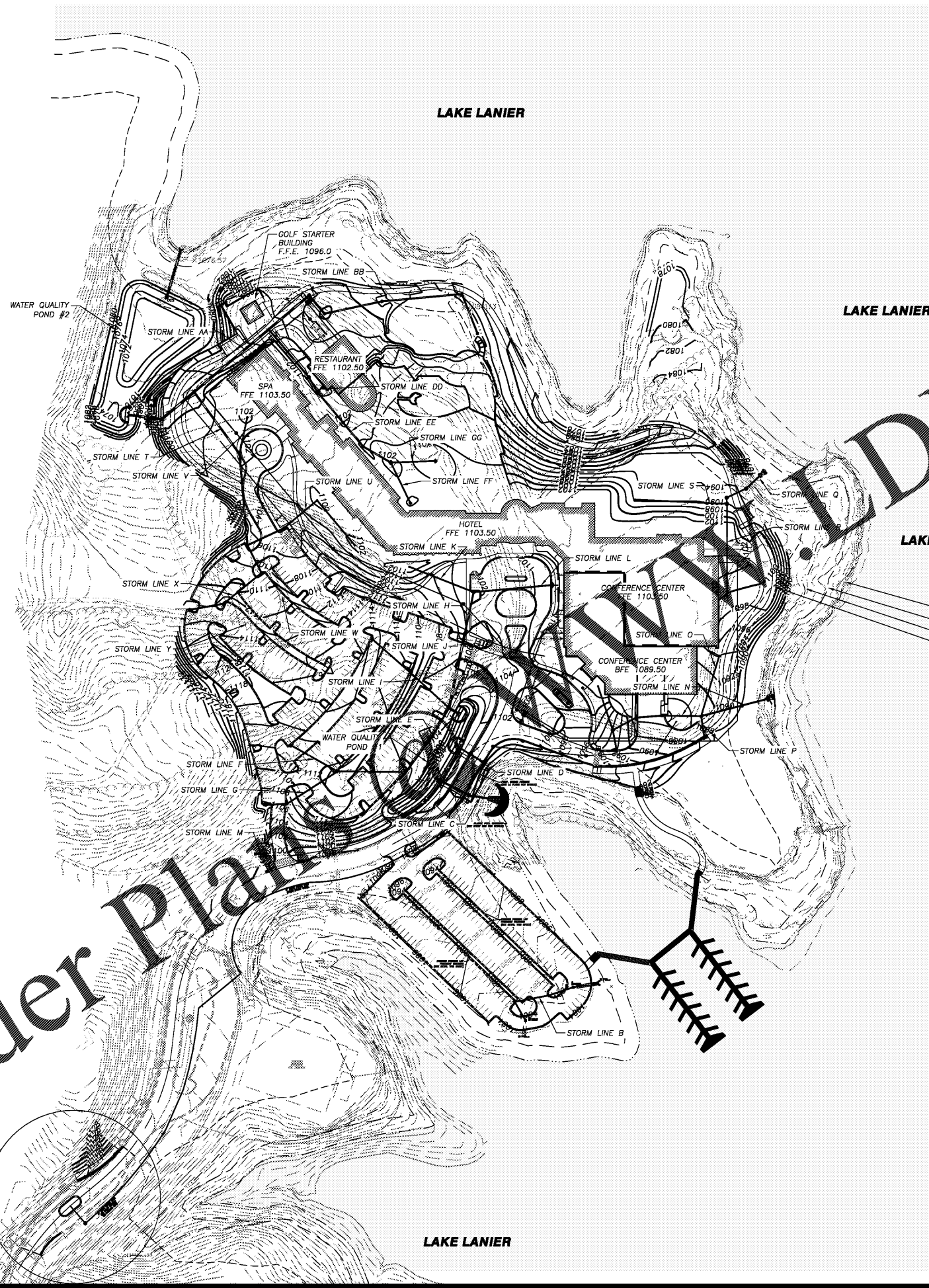


PLOT DATE: 12/11/20 2:26 PM
 R:\07-Production\0206124\0206124-ICC-01 - Lake Lanier Islands Conference Center -\Production\Engineering\Design\LLI Conference Center\0206124-ICC-01.dwg



- LEGEND**
- AIF - ANGLE IRON FOUND
 - AKA - ALSO KNOWN AS
 - BC - BACK OF CURB
 - BL - BUILDING SETBACK LINE
 - BWF - BARS WIRE FENCE
 - C&G - CURB & GUTTER
 - C/T - CRIMP TOP PIPE
 - CI - CURB INLET
 - CL - CENTER LINE
 - CLF - CHAIN LINK FENCE
 - CMF - CONCRETE MONUMENT FOUND
 - CMP - CORRUGATED METAL PIPE
 - CO - CLEAN OUT
 - CONC - CONCRETE
 - CORPS - US ARMY CORPS OF ENGINEERS
 - DB PG - DEED BOOK PAGE
 - DI - DROP INLET
 - DIP - DUCTILE IRON PIPE
 - DS - DOWN SPOUT
 - DWCB - DOUBLE WING CATCH BASIN
 - EP - EDGE OF PAVEMENT
 - FEE - FINISH FLOOR ELEVATION
 - FH - FIRE HYDRANT
 - G- - GAS LINE
 - GM - GAS METER
 - GP - GUY POLE
 - GV - GAS VALVE
 - GW - GUY WIRE
 - HC - HANDICAP
 - HW - HEADWALL
 - HWF - HOG WIRE FENCE
 - IE - INVERT ELEVATION
 - IFP - IRON PIN FOUND
 - IPS - IRON PIN SET
 - JB - JUNCTION BOX
 - LL - LAND LOT
 - LLL - LAND LOT LINE
 - LP - LIGHT POLE
 - MH - MANHOLE
 - MON - MONUMENT
 - N/F - NOW OR FORMERLY
 - OIT - OPEN TOP PIPE
 - PEX - POWER BOX / TRANSFORMER
 - P- - OVERHEAD POWER LINE
 - PT- - OVERHEAD POWER & TELEPHONE LINE
 - PL - PROPERTY LINE
 - PM - POWER METER
 - POB - POINT OF BEGINNING
 - PP - POWER POLE
 - PTP - POWER & TELEPHONE POLE
 - PVC - POLYVINYLCHLORIDE PIPE
 - RIB - REINFORCING IRON BAR
 - RCP - REINFORCED CONCRETE PIPE
 - R/W - RIGHT OF WAY
 - SS- - SANITARY SEWER LINE
 - SSE - SANITARY SEWER EASEMENT
 - SW - SIDEWALK
 - SWCB - SINGLE WING CATCH BASIN
 - TBM - TEMPORARY BENCHMARK
 - TBX - TELEPHONE BOX
 - TF - TRANSFORMER
 - TMH - TELEPHONE MANHOLE
 - TP - TELEPHONE POLE
 - TPOB - TRUE POINT OF BEGINNING
 - T- - OVERHEAD TELEPHONE LINE
 - UP - UNDERGROUND POWER
 - UT - UNDERGROUND TELEPHONE
 - WI - WEIR INLET
 - W- - WATER LINE
 - WM - WATER METER
 - WMH - WATER MANHOLE
 - WV - WATER VALVE

Order Plans

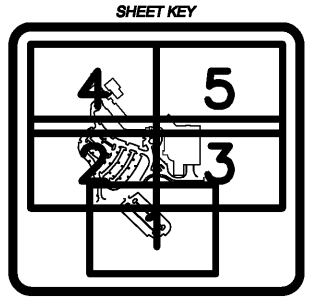
SEE SHEET C21 FOR ENTRANCE PLAN

- NORMAL POOL ELEVATION (1071')
- 25' STATE UNDISTURBED BUFFER
- FLOOD ELEVATION (1085')
- 100' SHORELINE BUFFER

- NOTES:**
1. SEE L.A. & STRUCTURAL PLANS FOR WALL PLANS.
 2. SEE ARCHITECTURAL PLANS FOR EXACT BUILDING DIMENSIONS.
 3. BOTTOM OF WALL ELEVATIONS LISTED IS FINISHED GRADE ELEVATION AND NOT TOP OF FOOTING.
 4. SEE SHEETS C26 THROUGH C31 FOR STORM SEWER PROFILES.
 5. SEE SHEETS C58 THROUGH C62 FOR CONSTRUCTION DETAILS.
 6. SPOT GRADES ARE AT EDGE OF PAVEMENT UNLESS OTHERWISE NOTED.

LINE TYPE LEGEND

25' STATE UNDISTURBED BUFFER	----
100' SHORELINE BUFFER	-----
NORMAL POOL ELEVATION (1071')	-----
FLOOD ELEVATION (1085')	-----
EXISTING TREE LINE	~~~~~



REVISIONS

NO.	REV.	DATE	DESCRIPTION

ANY CHANGES OR ALTERATIONS MADE TO THESE CONSTRUCTION DRAWINGS WITHOUT THE SIGNATURE AND SEAL OF THE PROFESSIONAL ENGINEER AND ANY LIABILITY ASSOCIATED THEREWITH ARE KEPT ON FILE FOR VERIFICATION OF ANY CHANGES.

GRAPHIC SCALE
 0' 100' 200'



SHEET C15 OF C66

DATE: 12-11-20
 SCALE: 1"=100'
 JOB NO.: 0206124-ICC-01
 REV'D BY: JNC
 DRAWN BY: JRS

OVERALL GRADING & DRAINAGE PLAN
 FOR:
LANIER ISLANDS CONFERENCE CENTER
 LAND LOT 380
 7TH DISTRICT
 CITY OF BUFORD, HALL COUNTY, GEORGIA

