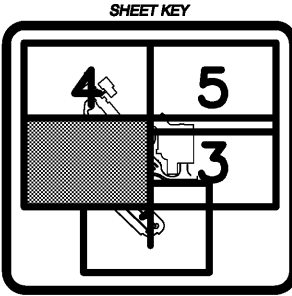


DATE: 12/11/20 2:32 PM
 R:\07-Production\2026124\2026124-ICC-01 - Lake Lanier Islands Conference Center -\Production\Engineering\Design\LI Conference Center\2026124-ICC-01-CC-BASE.dwg

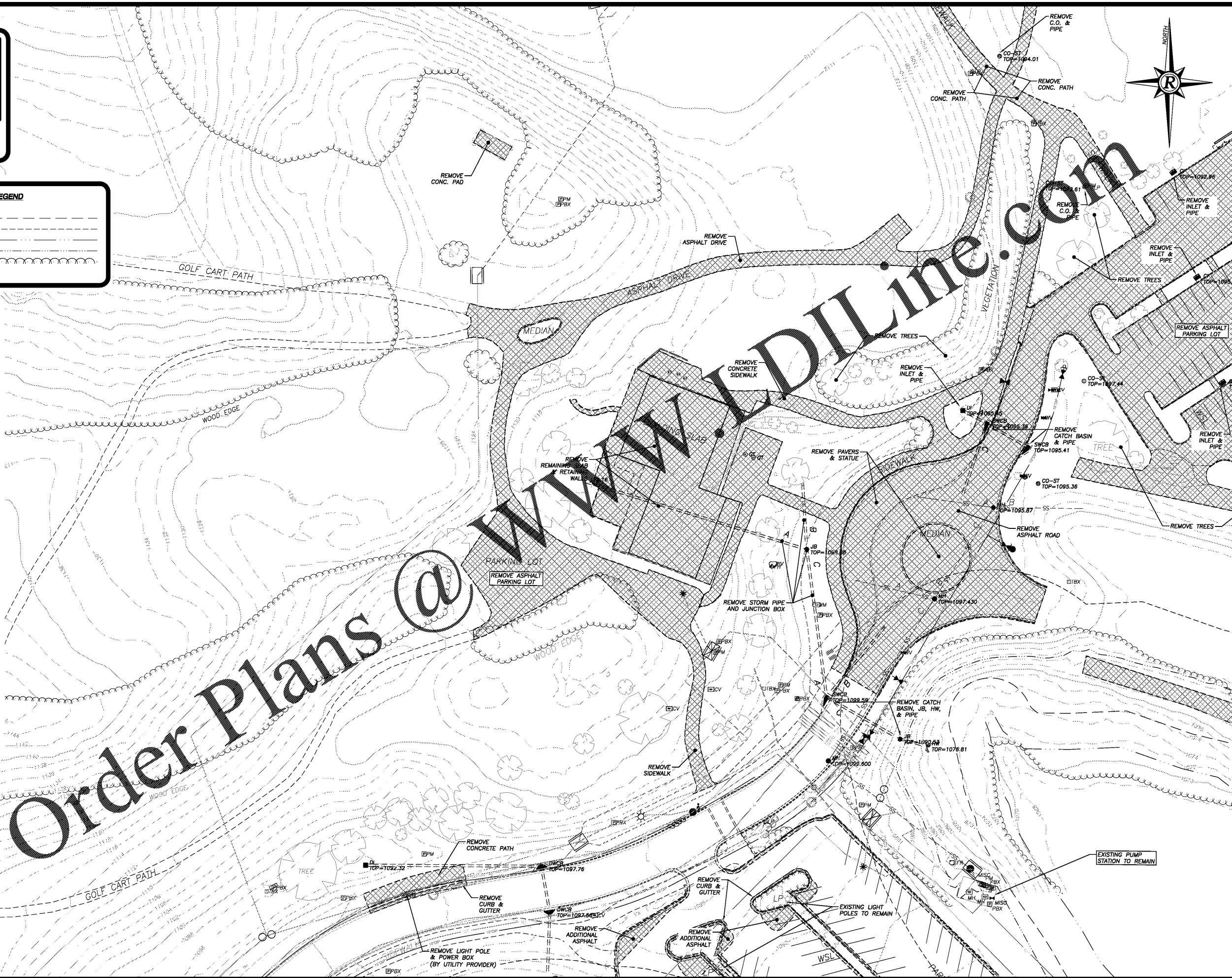


LINETYPE LEGEND

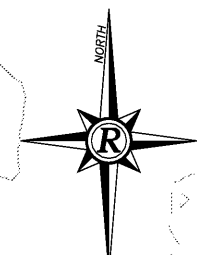
25' STATE UNDISTURBED BUFFER	---
100' SHORELINE BUFFER	---
NORMAL POOL ELEVATION 1071	---
FLOOD ELEVATION 1085	---
EXISTING TREE LINE	---

LEGEND

AIF	- ANGLE IRON FOUND
AKA	- ALSO KNOWN AS
BC	- BACK OF CURB
BL	- BUILDING SETBACK LINE
BWF	- BARS WIRE FENCE
C&G	- CURB & GUTTER
C/T	- CRIMP TOP PIPE
CI	- CURB INLET
CL	- CENTERLINE
CLF	- CHAIN LINK FENCE
CMF	- CONCRETE MONUMENT FOUND
CMP	- CORRUGATED METAL PIPE
CO	- CLEAN OUT
CONC	- CONCRETE
CORPS	- US ARMY CORPS OF ENGINEERS
DB PG	- DEED BOOK, PAGE
DI	- DROP INLET
DIP	- DUCTILE IRON PIPE
DS	- DOWN SPOUT
DWCB	- DOUBLE WING CATCH BASIN
EP	- EDGE OF PAVEMENT
FFE	- FINISH FLOOR ELEVATION
FH	- FIRE HYDRANT
G	- GAS LINE
GM	- GAS METER
GP	- GUY POLE
GV	- GAS VALVE
GW	- GUY WIRE
HC	- HANDICAP
HW	- HEADWALL
HWF	- HOE WIRE FENCE
I	- INVERT ELEVATION
IPF	- IRON PIN FOUND
IPS	- IRON PIN SET
JB	- JUNCTION BOX
LL	- LAND LOT
LLL	- LAND LOT LINE
LP	- LIGHT POLE
M	- MANHOLE
MON	- MONUMENT
NF	- NOW OR FORMERLY
OT	- OPEN TOP PIPE
PBX	- POWER BOX / TRANSFORMER
P	- OVERHEAD POWER LINE
P-TL	- OVERHEAD POWER & TELEPHONE LINE
PL	- PROPERTY LINE
PM	- POWER METER
POB	- POINT OF BEGINNING
PP	- POWER POLE
PTP	- POWER & TELEPHONE POLE
PVC	- POLYVINYLCHLORIDE PIPE
RIB	- REINFORCING IRON BAR
RCP	- REINFORCED CONCRETE PIPE
RW	- RIGHT OF WAY
SS	- SANITARY SEWER LINE
SSE	- SANITARY SEWER EASEMENT
SW	- SIDEWALK
SWCB	- SINGLE WING CATCH BASIN
TBM	- TEMPORARY BENCHMARK
TBX	- TELEPHONE BOX
TF	- TRANSFORMER
TMH	- TELEPHONE MANHOLE
TP	- TELEPHONE POLE
TPOB	- TRUE POINT OF BEGINNING
T	- OVERHEAD TELEPHONE LINE
UT	- UNDERGROUND POWER
UT	- UNDERGROUND TELEPHONE
WI	- WEIR INLET
W	- WATER LINE
WM	- WATER METER
WMH	- WATER MANHOLE
WV	- WATER VALVE



Order Plans @ WALDILINE.COM

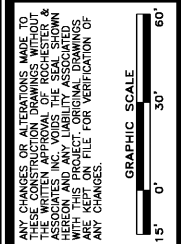


Rochester & Associates, Inc.
 208 Highway 335, Suite 4 • Reynolds, Georgia 30244
 (770) 884-2121 • www.rochester-inc.com

EXISTING CONDITIONS & DEMOLITION PLAN 2
 FOR:
LANIER ISLANDS CONFERENCE CENTER
 LAND LOT 380
 7TH DISTRICT
 CITY OF BUFORD, HALL COUNTY, GEORGIA

REVISIONS

NO.	DATE	DESCRIPTION



STATE OF GEORGIA
 PROFESSIONAL ENGINEER
 12-11-20
 12400
 JEFFREY N. COLLINS

SHEET
C5
 OF
C66

DATE: 12-11-20
 SCALE: 1"=30'
 JOB NO.: 020814.002.01
 REV'D BY: JNC
 DRAWN BY: JRS