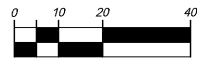


PARTIAL ELECTRICAL SITE PLAN



Know what's below. Call before you dig.



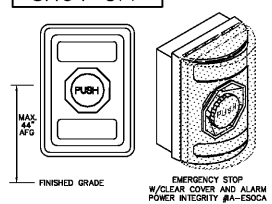
SCALE: 1" = 20'

Order Plans @

DISPENSERS AND TANKS CONDUCTOR REQUIREMENTS

DESCRIPTION	COLOR	#8	SIZE
DIESEL #1 STP	YELLOW	#8	
DIESEL #2 STP	ORANGE	#8	
DEF	BLUE	#10	
DISPENSER POWER	BLACK, WHITE & GREEN	#12	
DISPENSER SPARES	PURPLE & GRAY	#12	
DIESEL #1 SWITCH LEG	YELLOW	#14	
DIESEL #2 SWITCH LEG	ORANGE	#14	
DEF SWITCH LEG	BLUE	#14	
DATA	BLACK & RED (DATA)	#18 TWISTED PAIR (10-12 TWISTS/FT)	
DATA	PURPLE & YELLOW (CRIND)	#18 TWISTED PAIR (10-12 TWISTS/FT)	
DATA	BLUE & ORANGE (SPARES)	#18 TWISTED PAIR (10-12 TWISTS/FT)	
APPLAUSE MEDIA	CAT 5 CABLE	BEIDEN #7928A	
INTERCOM	(2) #22 SHIELDED TWISTED PAIR	HOUSTON WIRE & CABLE #H50850	
TLS-450 SENSORS	(1) #18 SHIELDED TWISTED PAIR	HOUSTON WIRE & CABLE #H32800	

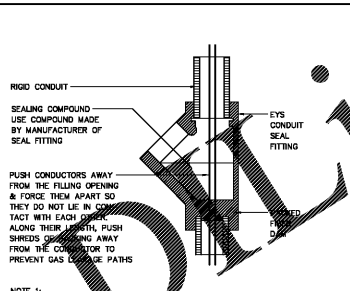
EMERGENCY FUEL SHUT OFF



EXTERIOR EMERGENCY FUEL SHUT-OFF

ELECTRICAL NOTES:

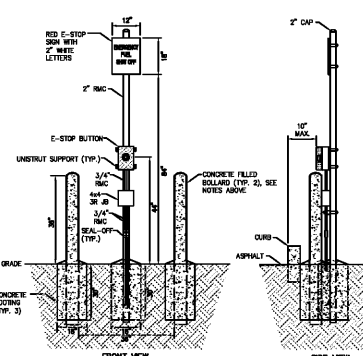
- ELECTRICAL INSTALLATION SHALL COMPLY WITH NEC 2014.
- N.E.C. ARTICLE 514 CONDITIONS FOR HAZARDOUS AREAS AND FUEL DISPENSING FACILITIES APPLY.
- PROVIDE EXPLOSION PROOF SEALS-OFFS IN ACCORDANCE WITH ARTICLES 514.3 AND 514.9(A) & (B) FOR ALL CONDUITS IN CLASS 1 HAZARDOUS LOCATIONS, INCLUDING LOW VOLTAGE CONDUITS.
- CIRCUIT DISCONNECTS TO BE PROVIDED AS PER NEC 514.11(A) AND NEC 514.13.
- EXTERIOR EMERGENCY CONTROLS TO BE INSTALLED AS PER NEC 514.11(B). REFER TO THIS SHEET FOR LOCATIONS.
- ALL WORK SHALL CONFORM TO THE LATEST EDITION OF THE NATIONAL ELECTRIC CODE, LOCAL ORDINANCES AND REGULATIONS AND STATE LAWS.
- ELECTRICAL EQUIPMENT & WIRING LOCATED IN HAZARDOUS (CLASS 1, DIV. 1&2) AREAS OF FUEL PUMPS AND ISLAND DISPENSERS SHALL COMPLY WITH THE PROVISIONS OF N.E.C. ARTICLE 501 & 514.
- HOMERUN CONDUITS TO DISPENSERS, TANKS AND CANOPY TO BE RIGID METAL CONDUIT (RMC) AND SCHEDULE 40 PVC AS PER NEC ARTICLE 514.8, EXCEPTION NO. 2. INTERMEDIATE METAL CONDUIT (MC) IS NOT ACCEPTABLE. THESE CONDUITS TO BE BURIED 24" MIN. BELOW FINISH GRADE AT BOTH ENDS WHERE SEAL-OFFS ARE INSTALLED.
- ALL CONDUCTORS TO BE COPPER, 600V, THWN-STRANDED.
- LOW VOLTAGE CABLES TO DISPENSERS & TANKS TO BE GAS AND OIL RESISTANT.
- INSTALL AN EQUIPMENT GROUND CONDUCTOR IN ALL BRANCH CIRCUIT CONDUITS.
- ALL CONDUITS RUN UNDER DRIVEWAYS AND PARKING AREAS TO BE BURIED 24" MIN. BELOW FINISH GRADE.
- COORDINATE WITH CAROLINA PRODUCTS INC. TO UPGRADE/MODIFY/ADD TO EXISTING GAS EQUIPMENT DISPENSER CONTROLS, STP CONTROLS, LV DISCONNECT MEANS & E-STOP CONTROLS.



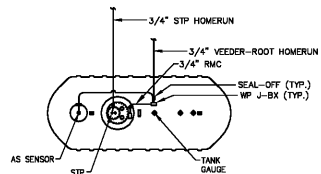
NOTE 1: PROVIDE EXPLOSION PROOF SEALS-OFFS IN ACCORDANCE WITH ARTICLES 500.50, 514.9(A) & (B) OF THE LATEST ADOPTED EDITION OF THE NATIONAL ELECTRICAL CODE, INCLUDING LOW VOLTAGE CONDUITS.
NOTE 2: ALL CONDUITS IN CLASS 1 LOCATIONS SHALL BE INSTALLED AS PER NEC 500.100 & 501.30.
NOTE 3: CONDUIT FILL SHALL NOT EXCEED 25% OF SEAL-OFF AS PER NEC 501.10(A)(6)

SEAL FITTING INSTALLATION

- NEEDS:**
- 1" F.S. SIZED 40 PIPE - FURNISHED AND INSTALLED BY G.C. BUMPER POSTS TO BE PLUMB AND ALIGNED IN A STRAIGHT LINE. FILL WITH G.C. AND TOPS TO BE GRINDING SWATHS. WELDURE CODE, THEN PRIME WITH TPO RUBBY BY SAND OR EQUAL.
 - PRE-COLORED DARK GRAY HOMOGENEOUS BOLLARD SLINGS, CUT TO FIT AND INSTALL BY G.C.



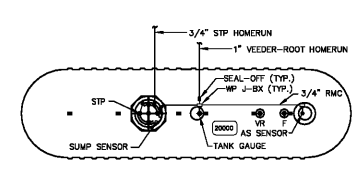
REMOTE EMERGENCY FUEL SHUT-OFF DETAIL



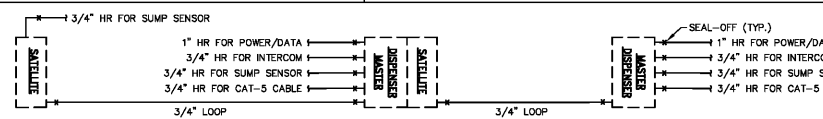
6K TANK LAYOUT - DEF

SITE ELECTRICAL CONDUIT / WIRE SCHEDULE

ITEM	QTY.	CONDUIT	WIRE / CABLE	NOTES
TRUCK CANOPY LIGHTS	1	RMC/PVC (5) #10 3-H, 1-G	(5) #10 3-H, 1-G	POWER FROM LIGHTING CONTACTORS TO CANOPY
TRUCK CANOPY LIGHTS	1	RMC/PVC (5) #8 2-H, 2-N, 1-G	(5) #8 2-H, 2-N, 1-G	POWER FROM LIGHTING CONTACTORS TO CANOPY
TRUCK CANOPY LIGHTS	2	RMC/PVC	PULL STRING	CONDUIT FROM FRAME RELAY GUTTER TO CANOPY FOR FUTURE DWR
POLY-SIGNALS	2	3/4" PVC	(3) #8 2-H, 1-G	POWER FROM LIGHTING CONTROLS
DIESEL MASTER DISPENSER POWER/DATA	1	RMC/PVC	(5) #12 (PWR & SPARES) (3) #14 (SWITCH LEGS) (1) #18 TW-PAIR (DATA) (1) #18 TW-PAIR (CRIND) (1) #18 TW-PAIR (SPARES)	HOMERUN FROM DISP. FOR PWR, CONTROLS & DATA. DATA WIRES TO BE CONTINUOUS FROM DISP. TO DATA BOX WITH NO SPLICES
DIESEL MASTER DISPENSER INTERCOM	1	3/4" RMC/PVC	(1) HWC #H50850	HOMERUN CABLE FROM INTERCOM CONSOLE IN UTILITY ROOM. ONE CABLE PER DISPENSER
DIESEL MASTER DISPENSER SUMP SENSOR	1	3/4" RMC/PVC	(1) HWC #H32800 CABLE PLUS (1) #12 GRD	HOMERUN FROM EXISTING VEEDER-ROOT CONSOLE IN UTILITY ROOM. ONE CABLE PER DISPENSER
DIESEL MASTER DISPENSER CAT 5	1	3/4" RMC/PVC	CAT 5 CABLE BEIDEN #7928A	HOMERUN FROM GAS EQUIPMENT IN UTILITY ROOM. ONE CABLE PER DISPENSER
DIESEL MASTER/SATELLITE DISPENSER POWER/DATA	3	RMC/PVC	(5) #12 (PWR & SPARES) (3) #14 (SWITCH LEGS) (1) #18 TW-PAIR (DATA) (1) #18 TW-PAIR (CRIND) (1) #18 TW-PAIR (SPARES)	HOMERUN FROM DISP. FOR PWR, CONTROLS & DATA. DATA WIRES TO BE CONTINUOUS FROM DISP. TO DATA BOX WITH NO SPLICES.
DIESEL MASTER/SATELLITE DISPENSER INTERCOM	3	3/4" RMC/PVC	(1) HWC #H50850	HOMERUN CABLE FROM EXISTING INTERCOM CONSOLE IN UTILITY ROOM. ONE CABLE PER DISPENSER
DIESEL MASTER/SATELLITE DISPENSER SUMP SENSOR	3	3/4" RMC/PVC	(1) HWC #H32800 CABLE PLUS (1) #12 GRD	HOMERUN FROM EXISTING VEEDER-ROOT CONSOLE IN UTILITY ROOM. ONE CABLE PER DISPENSER
DIESEL MASTER/SATELLITE DISPENSER CAT 5	3	3/4" RMC/PVC	CAT 5 CABLE BEIDEN #7928A	HOMERUN FROM GAS EQUIPMENT IN UTILITY ROOM. ONE CABLE PER DISPENSER
SATELLITE DISPENSER	1	3/4" RMC/PVC	(1) HWC #H32800 CABLE PLUS (1) #12 GRD	HOMERUN FROM VEEDER-ROOT CONSOLE IN UTILITY ROOM. ONE CABLE PER DISPENSER
MASTER TO SATELLITE DISPENSER LOOP	4	3/4" RMC/PVC	(3) #12 (PWR) (4) #14 (SWITCH LEGS)	POWER AND CONTROLS LOOPED FROM MASTER DISPENSER TO SATELLITE DISPENSER
DEF STP POWER (1/2 HP PUMP)	1	1" RMC/PVC	(4) #8 (3-H, 1-G)	HOMERUN FROM VFD TO EX-PROOF J-BOX FOR ONE STP
DEF STP POWER (1/2 HP PUMP)	1	3/4" RMC/PVC	(4) #10 (3-H, 1-G)	HOMERUN FROM VFD FOR POWER TO ONE STP
DSL TANK SENSORS HOMERUN	2	3/4" RMC/PVC	(3) HWC #H32800 CABLE PLUS (1) #12 GRD	HOMERUN FROM EXISTING VEEDER-ROOT CONSOLE TO TANK RISER (1-AS, 1-TG & 1-STP SUMP)
DSL TANK SENSORS HOMERUN	2	3/4" RMC	(1) HWC #H32800 CABLE PLUS (1) #12 GRD	LOOP FROM TANK RISER TO 1-AS & 1-STP SUMP
DEF TANK SENSORS HOMERUN	1	3/4" RMC/PVC	(3) HWC #H32800 CABLE PLUS (1) #12 GRD	HOMERUN FROM EXISTING VEEDER-ROOT CONSOLE TO TANK RISER (1-AS, 1-TG & 1-STP SUMP)
DEF TANK SENSORS HOMERUN	2	3/4" RMC	(1) HWC #H32800 CABLE PLUS (1) #12 GRD	LOOP FROM TANK RISER TO 1-AS, 1-TG & 1-STP SUMP
REMOTE E-STOP	2	3/4" RMC/PVC	(2) #10 (E-STOP CONTROLS) (1) #10 (GRD)	REMOTE E-STOP CONTROLS AND VEEDER-ROOT OVERFILL ALARM TO REMOTE E-STOP J-BOX
OVERFILL ALARM	1	3/4" RMC/PVC	(2) #10 (TLS-350 RELAY) (2) #10 (GRD)	POWER FROM VEEDER-ROOT CONSOLE TO OVERFILL ALARM J-BOX. SEE SHEET E-8.0 FOR DETAILS.



20K TANK LAYOUT-TRUCK DIESEL



TYPICAL MASTER/SATELLITE DISPENSER LAYOUT

CIRCLE K STORES, INC.
 SOUTH ATLANTIC DIVISION
 215 PENDLETON ST
 WAYCROSS, GA 31501
 PHONE: (912) 285-4011

MDM SERVICES, INC.
 engineering • construction
 1056 KATHLEEN ROAD, LAMAR, SOUTH CAROLINA 29685
 (803) 648-9130
 #004857
TANK & PIPING PLANS & SPECIFICATIONS

NO.	DATE	REVISION DESCRIPTION

SEAL OFFS

RICHARD B. MORSE, P.E.
 GA REG # 3997

SITE ADDRESS:
CIRCLE K
 1717 E 16th AVE.
 CORDELE, CRISP COUNTY
 GEORGIA

SCALE: MDM JOB # 20183
 DATE: 9/01/2020
 DESIGNED BY:
 DRAWN BY: JR FILE NAME:
 CHECKED BY:
 DRAWING TITLE:

ELECTRICAL SITE PLAN
 SHEET NO. **SE-1.0**