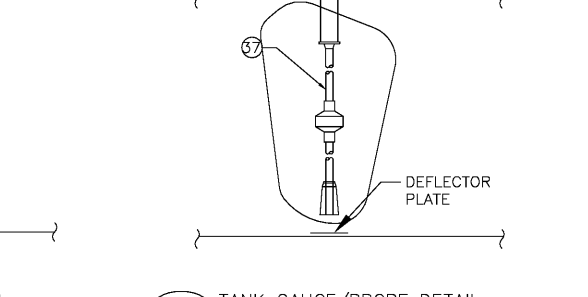
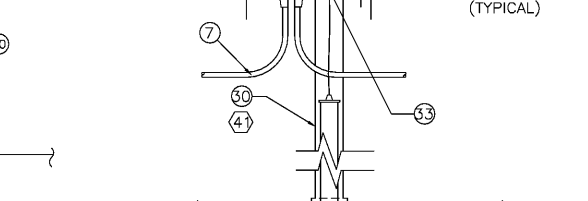
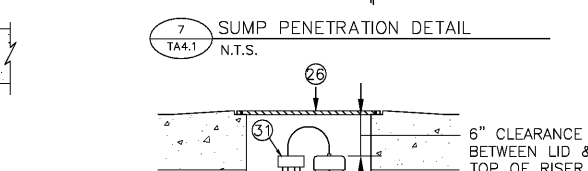
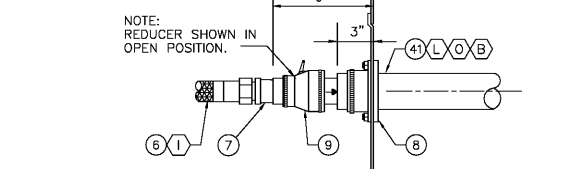


NO	EQUIPMENT DESCRIPTION	MANUFACTURER	MODEL	SUPPLIED BY	INSTALLED BY	NOTES
1A	20K DIESEL U/G STORAGE TANK, D/W, WET ANNULAR AND (1) SUMP	CONTAINMENT SOLUTIONS	DWT-6 TYPE B (10') 20,000	CK	G.C.	SEE TA-0, TA-3
1B	6K DEF U/G STORAGE TANK, D/W, WET ANNULAR AND (1) SUMP	CONTAINMENT SOLUTIONS	DWT-6 (6') 6,000	CK	G.C.	SEE TA-0, TA-3
2A	SUBMERGED TURBINE PUMP- VARIABLE SPEED (4 HP)	FE PETRO	STPMV4	CK	G.C.	
2B	STP CONTROL BOX VARIABLE SPEED CONTROLLER	FE PETRO	MAG VFC 587420800	CK	G.C.	
2C	1.5 HP, 2-STAGE, VLI DEF VARIABLE LENGTH SUBMERGED TURBINE PUMP KIT	FE PETRO	403478901	CK	G.C.	
2D	STP-CB3 3-PHASE CONTROL BOX	FE PETRO	401220903	CK	G.C.	SHIP, 208-230VAC, 50/60Hz Pump Control
3	MECHANICAL LINE LEAK DETECTOR	FE PETRO	STP-MLD-0 403170903	CK	G.C.	
4	BALL VALVE (2" OR 3")	UNIVERSAL	213FP-20 OR 213FP-30	CK	G.C.	AS OCCURS
5	M&M BRAZED STAINLESS STEEL FLEX CONNECTOR (2"x12" OR 3"x12")	HOSE MASTER	FSMS OR FSMM	CK	G.C.	AS OCCURS
6	2" OR 3" FRP ADAPTER- BELL X NPT MALE	AMERON LCX		CK	G.C.	AS OCCURS
7	SUMP ENTRY BOOT (2" OR 3")	BRAVO	F-20-FR-LCX OR F-30-FR-LCX	CK	G.C.	AS OCCURS
8	TERMINATION FITTING WITH TEST PORT (2" OR 3")	OPW	TBA-0200 OR TBA-0300	CK	G.C.	
9	44" ROUND COMPOSITE CAM LOCK MANWAY W/10" SKIRT	EMCO WHEATON	A0716-044C	CK	G.C.	
10	4"x4"x2" EXTRACTOR FITTING W/O CAGE	DPW	233-4420	CK	G.C.	
11	SWIVEL VAPOR RECOVERY ADAPTER, BRASS FOR STAGE I VR	EMCO WHEATON	A0076-124S	CK	G.C.	
12	4" STAGE I VAPOR ADAPTER CAP	EMCO WHEATON	A0099-002	CK	G.C.	
13	4"x 15' RMTLESS OVERFILL DROP TUBE & OVERFILL VALVE ASSEMBLY	EMCO WHEATON	A1100-056S	CK	G.C.	
14	FILL-5 GAL. D.W. SPILL CONTAINMENT, NO DRAIN, MONITOR	EMCO WHEATON	A1005-518PQ	CK	G.C.	
15	STAINLESS STEEL BUZZETS W/ CAST BRN LIDS	EMCO WHEATON	A1005-518A	CK	G.C.	
16	VAPOR-5 GAL. THREAD ON S.W. SPILL CONTAINMENT, NO DRAIN, STAINLESS STEEL SINGLE WALL	EMCO WHEATON	A1005-518A	CK	G.C.	
17	4" FILL PIPE, SWIVEL ADAPTOR, BRASS	EMCO WHEATON	A0010-124S	CK	G.C.	
18	4" TIGHT FILL CAP, EPOXY COATED	EMCO WHEATON	AS 7-005	CK	G.C.	
19	4"x24" THIN WALL RISER MANHOLE (DIESEL TANK ONLY)	FE PETRO	400188924	CK	G.C.	
20	FILL PIPE ID TAGS W/PRODUCT ID & TANK CAPACITY			CK	G.C.	
21	3M SCOTCHTAPE	3M	20 ML	G.C.	G.C.	
22	18" TANK STICK (TO BE LEFT STORE)	MAGBY	BG1-18	CK	G.C.	
23	42" DIA. OCTAGON FIBERGLASS CONTAINMENT SUMP & ASSEMBLY	CONTAINMENT SOLUTIONS	SW PTS (WT34)42/B-4	CK	G.C.	
24	STANDARD STP 85psi HIGH PRESSURE CHECK VALVE	FE PETRO	402459931	CK	G.C.	
25	A/G COMPATIBLE SYPHON CHECK VALVE ASSY	FE PETRO	400137937	CK	G.C.	
26	18" STANDARD MANHOLE W/ 10" SKIRT	EMCO WHEATON	A0717-018	CK	G.C.	
27	TURN BUCKLES & ANCHORS			CK	G.C.	
28	HOLD DOWN STRAPS (1/2" DIA. OR 8")			CK	G.C.	
29	4" GALV. RISER- LENGTH AS REQUIRED			G.C.	G.C.	SEE NOTE AA
30	JUNCTION BOX	CH	GUP215	G.C.	G.C.	
31	SEAL	CH	EY02	G.C.	G.C.	
32	4" PIPE - SCH. 40 GALV.			G.C.	G.C.	
33	3" DIA. PLYWOOD EXTRACTOR CROSS			G.C.	G.C.	
34	INTERSTITIAL FOAM	VEEDER ROOT	794380-430	CK	G.C.	SEE TA-2, SECTION L
35	SUMP PROBE	VEEDER ROOT	794380-208	CK	G.C.	SEE TA-2, SECTION L
36	VEEDER-ROOT AUDIBLE OVERFILL ALARM & ACKNOWLEDGEMENT SWITCH	VEEDER ROOT	790091-001 / 790095-001	CK	G.C.	
37	VEEDER-ROOT TLS 450 TANK GAUGE & LEAK DETECTION	VEEDER ROOT		CK	G.C.	SEE TA-2, SECTION L
38	3/4" OR 1" SUMP ENTRY BOOT	BRAVO	F-07-FR OR F-10-FR	CK	G.C.	AS OCCURS
39	2" OR 3" (FRP) COAX FIBERGLASS PIPE	AMERON LCX		CK	G.C.	AS OCCURS
40	2" THREAD ON PRESSURE VACUUM VENT W/ 3" PRESSURE WATER COLUMN AND 8" VACUUM WATER COLUMN	OPW	623V-2203	CK	G.C.	
41	4" DURATUFF PIPE CAP	OPW	116-7085	CK	G.C.	
42	2" ALUMINUM TANK VENT	OPW	23-0033	CK	G.C.	
43	2" SINGLE WALL FIBERGLASS PIPE	AMERON LCX		CK	G.C.	



NOTES

- CLEAN COMPACTABLE BACKFILL. ALL OTHER MATERIAL MUST BE APPROVED BY TANK MANUFACTURER AND OWNER'S FIELD REPRESENTATIVE.
- PRODUCT PIPE & FITTINGS TO BE AMERON LCX AND INSTALLED PER MANUFACTURER'S SPECIFICATIONS.
- SLOPE CONCRETE AWAY FROM ALL MANHOLES 1" RISE OVER 12" RUN. EXCEPT WHERE INDICATED.
- DO NOT USE THREAD SEALANT ON THREADS COMMON TO CAGE AND BASE. WHEN INSTALLING CAGE INTO BASE, LUBRICATE THREADS WITH LIGHT COATING OF GREASE. DO NOT OVERTIGHTEN.
- TANK BOTTOMS SHALL BE INSTALLED LEVEL.
- INSTALL LID ONTO SUMP RISER AND SUMP RISER ONTO SUMP BASE USING ALL SUPPLIED GASKETS/ O' RINGS, BOLTS, STEEL PLATES, ETC. PER SUMP MANUFACTURER'S INSTALLATION INSTRUCTIONS.
- REINFORCE CONCRETE SLAB AROUND MANHOLE W/ 3-#4 REBAR 8" IN LENGTH 9" O.C. PLACE REBAR 8" FROM SIDES OF BOX. MIN. 2" COVER.
- 8" THICK 4000 PSI CONCRETE SLAB REINFORCED W/ #3 REBAR @ 18" O.C. TANK SLAB TO EXTEND 2" PAST TANK HOLE IN ALL DIRECTIONS.
- MINIMUM BEND RADIUS 4".
- 3/4" CONDUIT FROM EACH SUBMERSIBLE PUMP TO BUILDING. TERMINATE WITH SEAL-OFF PER NFPA SPECIFICATIONS.
- 3/4" CONDUIT FOR STP SUMP SENSORS, LOOPED FROM TANK GAUGE.
- ALL PENETRATIONS MUST BE PERPENDICULAR TO CONTAINMENT SLABS.
- CUT AND POSITION FILL TUBE WITH ANGLE AWAY FROM SUBMERSIBLE PUMP. OWNER'S ENGINEER SHALL VERIFY DROP TUBE HEIGHT.
- INSTALL TANK ID. MARKERS IN THE SPILL CONTAINMENT MANHOLES USING WORM CLAMP AROUND FILL RISERS. INCLUDE OXYGENATED FUEL DATE TAGS WHERE APPLICABLE. SECURE IN PLACE.
- PIPING SHALL BE LAD AND CONTINUOUSLY SUPPORTED ON A 8" COMPACTED BEDDING OF PEA GRAVEL. NO PIPING SHALL BE SUPPORTED BY BLOCKS, PLANKS, OR OTHER DEBRIS. MAINTAIN 7" MINIMUM COVER BETWEEN SLAB BOTTOM AND TOP OF FRP PIPE/FITTINGS. PIPING STANDOFF FALL TO BE 1/4" PER FOOT. WORK LINE FALL TO BE VERIFIED BY CIRCLE K CONSTRUCTION MANAGER AFTER PIPING IS LAD ON GRAVEL BEDDING.
- INTERIOR OF FIBERGLASS CONTAINMENT SUMP TO BE CLEAR OF SOIL, TRASH AND ANY LIQUID.
- THOROUGHLY HAND CLEAN WITH WIRE BRUSH THE G.I. RISER SURFACE WITHIN 3" OF EXISTING TANK FITTING. ALL METALLIC COMPONENTS ABOVE TANK AND LOWER 1" OF SPILL CONTAINER. APPLY EPOXY PRIMER TO THESE AREAS. WRAP WITH 3M TAPE 20 MIL THICK.
- 4" G.I. NIPPLE, TIGHT FILL ADAPTER (OR STAGE I VR DRY BREAK) AND LOCKING CAP. MAINTAIN 1 1/2" TO 2" BETWEEN CAP AND OVERFILL CONTAINER COVER. USE STABILIZER BARS SUPPLIED WITH OVERFILL CONTAINER TO ESTABLISH CORRECT FINISHED ELEVATION.
- THE TORQUE RECOMMENDATION FOR TIGHTENING THE EMCO SPILL CONTAINERS TO THE RISER PIPES IS 250FT. LBS. MAXIMUM.
- 5 1/2" BELOW THE MANHOLE RIM ELEVATION.
- VAPOR RECOVERY ADAPTOR FINISHED HEIGHT TO BE 3 1/2" TO 4 1/2" BELOW THE MANHOLE RIM ELEVATION.
- *AB* MODEL 3902 OR *DZ/DEDEY* MODEL G-1000
- 1/2"-1" HEAVY DUTY GROUNDING CLAMP OR OWNER APPROVED EQUAL.
- #5 REINFORCING STEEL BAR, MINIMUM 8" LONG PLACED HORIZONTALLY IN NATIVE SOIL. BAR IS TO BE AT 30" MINIMUM BELOW CONCRETE SLAB.
- #8 BRAZED OR SOLID COPPER GROUNDING CONDUCTOR ROUTED IN SERIES BETWEEN BOTH SPILL CONTAINERS. CONNECT TO SPILL CONTAINERS AT GROUNDING STUDS PROVIDED. SECURELY GRAB TO CONDUCTOR WITH *MITEC*. NO HANG OR MOT. SPLICES ARE NOT PERMITTED BETWEEN GROUNDING STUDS AND/OR GROUNDING ROD.
- SLOPE PER SIDES REPORT OR TANK MANUFACTURER INSTALLATION INSTRUCTIONS.
- ALL SUMP PENETRATION FITTINGS TO BE NAPI AMERICAS ELECTROFUSION ENTRY BOOTS.
- ALL DEF COMPONENTS & FITTINGS, OTHER THAN PIPING SHALL BE STAINLESS STEEL.

CIRCLE K STORES, INC.

SOUTH ATLANTIC DIVISION
215 PENLETON ST
WAYCROSS, GA 31501
PHONE: (912) 285-4011

DESIGN TEAM:

MDM SERVICES, INC.

engineering • instrumentation • construction

1055 KATHLEEN ROAD, LAKELAND, FLORIDA 33805
(863) 646-5130
FAX #004637

TANK & PIPING PLANS & SPECIFICATIONS

NO.	DATE	REVISION DESCRIPTION

FILED

RICHARD S. WOODS, P.E.
GA REG.# 28939

STATE ADDRESS: **CIRCLE K**

**1717 E 16TH AVE.
CORDELE, CRISP COUNTY
GEORGIA**

SCALE: MDM JOB # 20183

DATE: 9/01/2020

DESIGNED BY:

DRAWN BY: JR FILE NAME:

CHECKED BY:

DRAWING TITLE: **TANK DETAILS**

SHEET NO: **TA-4.1**