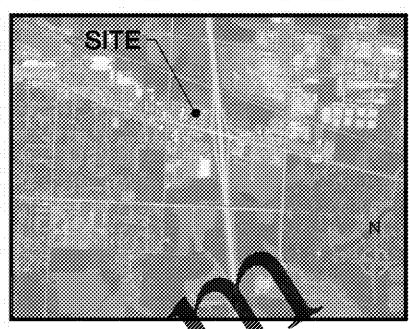
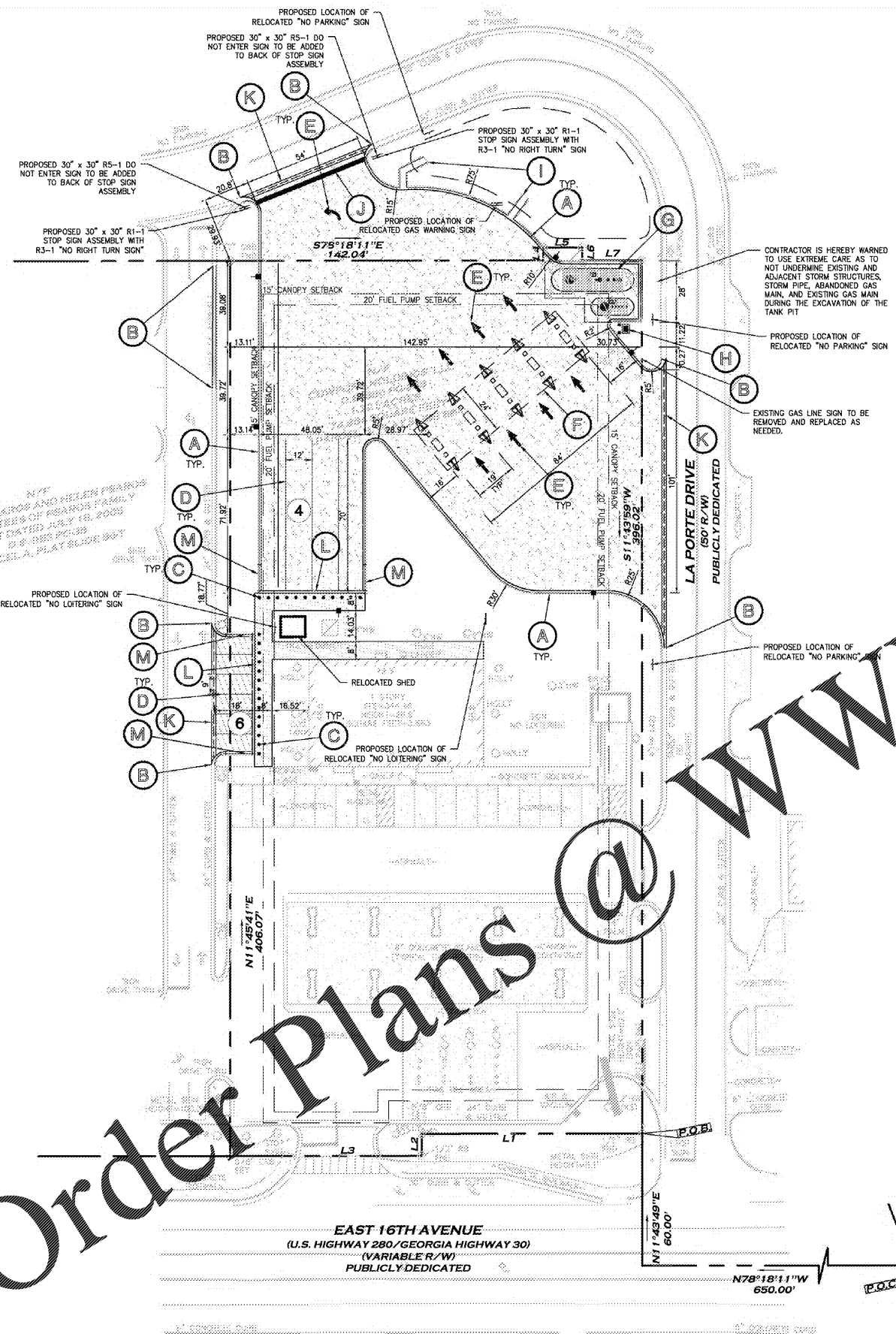


USER: 6675 - Dec 15, 2020 - 3:32pm
 Z:\AI Project Data\Projects\2019\19-LD-090 Circle K Cordele GA\LD\Production\Drawings\19-LD-090 MAN.dwg - LAYOUT: C-1 VERSION: 1

Order Plans @ www.LDInline.com

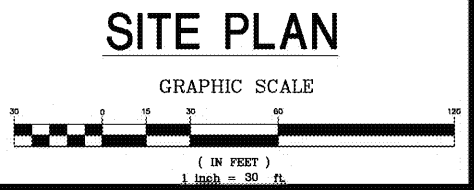
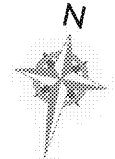


SITE ANALYSIS
 TOTAL SITE AREA 1.72 ± AC.
 PROPOSED ADDITIONAL PARKING 8 SPACES
 PROPOSED TRUCK PARKING 4 SPACES

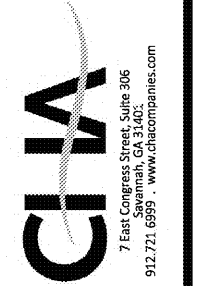
- SITE PLAN NOTES**
- ALL WORK AND MATERIALS SHALL COMPLY WITH ALL CITY/COUNTY REGULATIONS AND CODES AND O.S.H.A. STANDARDS. ALL DISTURBED AREAS ARE TO RECEIVE FOUR INCHES OF TOPSOIL, SEED, MULCH AND WATER UNTIL A HEALTHY STAND OF GRASS IS ESTABLISHED.
 - ALL ISLANDS WITH CURB & GUTTER SHALL BE LANDSCAPED. THOSE ISLANDS ARE TO HAVE 18" CURB & GUTTER. ALL REMAINING ISLANDS ARE TO BE STRIPED AS SHOWN.
 - ALL CURBED RADII ARE TO BE 5' UNLESS OTHERWISE NOTED.
 - ALL DIMENSIONS AND RADII ARE TO THE FACE OF CURB UNLESS OTHERWISE NOTED.
 - CONTRACTOR SHALL BE RESPONSIBLE FOR ALL RELOCATIONS, INCLUDING BUT NOT LIMITED TO, ALL UTILITIES, STORM DRAINAGE, SIGNS, TRAFFIC SIGNALS & POLES, ETC. AS REQUIRED. ALL WORK SHALL BE IN ACCORDANCE WITH GOVERNING AUTHORITIES' SPECIFICATIONS AND SHALL BE APPROVED BY SUCH. ALL COST SHALL BE INCLUDED IN BASE BID.
 - TOTAL LAND AREA IS 1.72 ± ACRES.
 - THE SITE WORK FOR THIS PROJECT SHALL MEET OR EXCEED CIRCLE K SPECIFICATIONS.
 - REFER TO ASMEP PLANS FOR SITE ELECTRICAL PLAN.
 - ALL BOUNDARY AND TOPOGRAPHICAL INFORMATION SHOWN WAS TAKEN FROM A SURVEY BY LOWERY AND ASSOCIATES LAND SURVEYING, LLC, DATED 03/17/2020.
 - THIS PROPERTY DOES NOT LIE IN A 100-YEAR FLOODPLAIN OR IN AN IDENTIFIED "FLOOD PRONE AREA", AS DEFINED PURSUANT TO THE FLOOD DISASTER PROTECTION ACT OF 1973, AS AMENDED, AS REFLECTED BY FLOOD INSURANCE RATE MAP PANEL NO. 13081001548L, DATED 03/23/2009.
 - THE CURRENT ZONING OF ALL PROPERTY SHOWN FOR DEVELOPMENT IS "HC".
 - ALL EXPANSION JOINTS TO RECEIVE GRAY CAULK OR ZIP STRIPS.

- SITE LEGEND**
- (A) 18" CONCRETE CURB AND GUTTER. SEE DETAIL.
 - (B) MATCH EXISTING CURB/SIDEWALK ALIGNMENT AND GRADE.
 - (C) 6" STEEL BOLLARD WITH RED PLASTIC COVER.
 - (D) PARKING SPACE STRIPING. STRIPES SHALL BE PAINTED 4" SOLID WHITE.
 - (E) DIRECTIONAL ARROW, TYP. SEE DETAIL.
 - (F) FUEL CANOPY DRIP LINE (5 DISPENSERS). REFER TO CANOPY AND FUELING PLANS.
 - (G) UNDERGROUND FUEL STORAGE TANKS. REFER TO FUELING PLANS.
 - (H) VENT STACKS WITH 2-6" STEEL BOLLARDS. REFER TO FUELING PLANS.
 - (I) SITE LIGHTING POLES. SEE SITE LIGHTING PLANS.
 - (J) SOLID WHITE 24" WIDE STOP BAR.
 - (K) VALLEY GUTTER. SEE DETAILS.
 - (L) 6" FLUSH HEADER CURB. SEE DETAILS.
 - (M) 12" TRANSITION FROM 6" TO FLUSH CURB.
 - (N) 3' CONCRETE FLUME. SEE DETAIL.

- PROPOSED IMPROVEMENTS**
- PROPERTY LINE
 - PROPOSED CURB AND GUTTER
 - PROPOSED BUILDING
 - HEAVY DUTY CONCRETE PAVEMENT SEE DETAIL
 - TANK FARM CONCRETE PAVEMENT REFER TO FUELING PLANS
 - SIDEWALK SEE DETAIL
 - STANDARD DUTY CONCRETE PAVEMENT SEE DETAIL



DEWATERING NOTE
 WHEN PERFORMING GRADING OPERATIONS DURING PERIODS OF WET WEATHER, PROVIDE ADEQUATE DEWATERING, DRAINAGE AND GROUND WATER MANAGEMENT TO CONTROL MOISTURE OF SOILS.



Project Title
CIRCLE K DIESEL EXPANSION
CORDELE, GA (CRISP COUNTY)
 BY: CIRCLE K - SOUTH ATLANTIC DIVISION
 WAYCROSS, GA 31501

REVISIONS	BY

DRAWN BY RLP
 CHECKED BY JLH
 DATE 12/15/2020
 SCALE 1" = 30'
 JOB No. 19-LD-090
 SHEET NUMBER

C-1