

**PERMITTEE INFORMATION**  
DEVELOPER: CIRCLE K-SOUTH ATLANTIC DIVISION  
ADDRESS: 210 PENNINGTON ST.  
WAYCROSS GA 31550  
24 HOUR CONTACT: REBECCA THORN  
TELEPHONE: (912) 367-7222  
PERMITTEE EMAIL: REBECCA.THORN@CKR.DIG.COM

**PROJECT DESCRIPTION**  
THIS PROJECT CONSISTS OF THE CONSTRUCTION OF COMMERCIAL FUEL CANOPY WITH ASSOCIATED PARKING/DRIVE AREAS AND STORMWATER MANAGEMENT FACILITIES ON THE TOTAL SITE AREA OF 201,128.00 SQUARE FEET. THE PROPOSED DEVELOPMENT IS ZONED HC.

**EARTHWORK**  
THE VOLUME OF CUT IS 72 CY.  
THE VOLUME OF FILL IS 1075 CY.  
EARTHWORK NUMBERS ARE PROVIDED PER THE STATE'S STORMWATER PERMIT AND SHOULD NOT BE USED FOR BIDDING PURPOSES. IT IS THE CONTRACTOR'S RESPONSIBILITY TO PERFORM HIS/HER OWN QUANTITY TAKE OFF FOR BIDDING PURPOSES.

**ADJACENT AREA INFORMATION AND EXISTING CONDITIONS**  
THIS SITE IS LOCATED IN CORDELE, CRISP COUNTY, GA. PRESENTLY, IT IS AN EXISTING CIRCLE K FACILITY WITH VACANT REAR LOT. THE SITE IS BOUNDED BY 18TH AVENUE TO THE SOUTH BY LAYPINE DRIVE TO THE NORTH AND EAST, AND AN EXISTING CHK-FM-A TO THE WEST.

**FLOOD ZONE STATEMENT**  
THIS PROPERTY DOES NOT LIE IN A 100-YEAR FLOODPLAIN OR IN AN IDENTIFIED "FLOOD PROOF AREA", AS DEFINED PURSUANT TO THE FLOOD DAMAGE PREVENTION ACT OF 1974, AS AMENDED AS REFLECTED BY FLOOD INSURANCE RATE MAP PANEL NO. 13053C0124B, DATED 06/25/2009.

**EXISTING EROSION CONTROL PROBLEMS**  
NO EROSION CONTROL PROBLEMS EXIST ON SITE.

AREA TO BE PAVED = 1.09 ACRES  
AREA TO BE VEGETATED = 0.44 AC  
AREA TO BE ROOFED = 0.09

**SOIL TYPES**  
THE WIPES SOIL TYPES ARE AS FOLLOWS:  
S6 - SILT-CLAY LOAMY SAND, 0-2% SILTS, 15% CLAY  
T6 - TYPICAL LOAMY SAND, 0-2% SILTS, 15% CLAY  
T6 - TYPICAL LOAMY SAND, 0-2% SILTS, 15% CLAY  
T6 - TYPICAL LOAMY SAND, 0-2% SILTS, 15% CLAY

**SOIL DISTURBING ACTIVITIES DESCRIPTION**  
INSTALLING A STABILIZED CONSTRUCTION EXIT, PERMITTER AND OTHER EROSION AND SEDIMENT CONTROLS, EXCAVATION OF THE SEDIMENTATION CHANNELS AND GRUBBING OF THE STORM SEWER AND STORMWATER STORM SEWER, UTILITIES AND BUILDING FOUNDATIONS, CONSTRUCTION OF DRIVEWAYS, SIDEWALKS AND PARKING AREAS, PREPARATION FOR FINAL PLANTING AND SEEDING AND COMPLETION OF ON-SITE STABILIZATION.

**RUNOFF COEFFICIENT**  
THE PRE DEVELOPMENT CURVE NUMBER FOR PRE BASIN 1 WAS 0N-67. THE PRE DEVELOPMENT COEFFICIENT OF RUNOFF FOR PRE BASIN 2 WAS 0N-67. THE TOTAL PEAK FLOW POST DEVELOPMENT DISCHARGE FOR THE 25 YEAR DESIGN EVENT IS 2.95 CFS.

**INVENTORY FOR POLLUTION PREVENTION PLAN**  
THE FOLLOWING MATERIALS ARE DETECTED DURING CONSTRUCTION: CONCRETE PRODUCTS, ASPHALT, PETROLEUM BASED FUELS AND LUBRICANTS FOR EQUIPMENT, METAL BUILDING MATERIALS, LUMBER, SHEETROCK, FLOOR COVERINGS, ELECTRICAL WIRE AND FIXTURES, PAINTS/STAINING/FINISHING MATERIALS, CLEANING SOLVENTS, FERTILIZERS, HERBICIDES, CRUSHED STONE, PLASTIC AND METAL PIPES.

**SPILL PREVENTION**  
PRACTICES SUCH AS GOOD HOUSEKEEPING, PROPER HANDLING OF HAZARDOUS PRODUCTS AND PROPER SPILL CONTROL PRACTICES WILL BE FOLLOWED TO REDUCE THE RISK OF SPILLS AND SPILLS FROM DISCHARGING INTO STORM WATER RUNOFF.

**GOOD HOUSEKEEPING**  
1. QUANTITIES OF PRODUCTS STORED ON-SITE WILL BE LIMITED TO THE AMOUNT NEEDED FOR THE JOB.  
2. PRODUCTS AND MATERIALS WILL BE STORED IN A NEAT, GROSSLY MANAGED MANNER IN APPROPRIATE CONTAINERS PROTECTED FROM RAINFALL, WHERE POSSIBLE.  
3. PRODUCTS WILL BE KEPT IN THEIR ORIGINAL CONTAINERS WITH MANUFACTURER LABELS LEGIBLE AND VISIBLE.  
4. PRODUCT MIXING, DISPOSAL OF PRODUCTS, AND THE DISPOSAL OF PRODUCT CONTAINERS WILL BE ACCORDING TO THE MANUFACTURERS' RECOMMENDATIONS.  
5. THE CONTRACTOR WILL INSPECT SUCH MATERIALS TO ENSURE PROPER USE, STORAGE AND DISPOSAL.

**BUILDING MATERIALS**  
FOR BUILDING MATERIALS, BUILDING PRODUCTS AND CONSTRUCTION WASTES, TRASH, LANDSCAPE MATERIALS, FERTILIZERS, PESTICIDES, HERBICIDES, DETERGENTS, SANITARY WASTE AND OTHER MATERIALS PRESENT IN THE SITE, PROVIDE COVER (E.G. PLASTIC SHEETING, TEMPORARY ROOFS) TO MINIMIZE THE DISCHARGE OF POLLUTANTS FROM THESE AREAS.  
MINIMIZATION OF EXPOSURE IS NOT REQUIRED IN CASES WHERE EROSION OR PRODUCT SPILLS LITTLE RISK TO STORM WATER CONTAMINATION FROM A DRAINAGE CANAL OR MATERIALS THAT ARE OUT FOR USE.

**NTU VALUES**  
BASED ON A SITE OF 0.4 ACRES AND A FILLFACE WATER DRAINAGE AREA OF 0.4 ACRES, ALLOWABLE NTU VALUES ARE 1000 NTU FOR THIS SITE.

**REPRESENTATIVE NOTE/FEATING WHICH CORRESPONDS WITH THE EARTH PLAN CHECK LIST**

THE DESIGN PROFESSIONAL WHO PREPARED THE EARTHWORK PLAN IS TO INSPECT THE INSTALLATION OF THE INITIAL SEDIMENT STORAGE REQUIREMENTS AND EROSION CONTROL BMPs WITHIN 7 DAYS AFTER INSTALLATION.

**PRODUCT SPECIFIC PRACTICES**  
PETROLEUM BASED PRODUCTS - CONTAINERS FOR PRODUCTS SUCH AS FUELS, LUBRICANTS AND TARS WILL BE SECURED DAILY FOR LEAKS AND SPILLS. REGULAR PREVENTATIVE MAINTENANCE OF SUCH EQUIPMENT, EQUIPMENT MAINTENANCE AREAS AND STORAGE AREAS SHALL BE MAINTAINED. SPILLS AND STORM WATER DRAINAGE ALIENS. IN ADDITION, TYPICAL MATERIALS SHALL HAVE A SECONDARY CONTAINMENT LINER TO PREVENT SPILLS FROM ESCAPING. DISCHARGE OF OILS, FUELS AND LUBRICANTS IS PROHIBITED. PROPER DISPOSAL METHODS WILL BE COLLECTED AND PROPERLY DISPOSED AS REQUIRED BY LOCAL AND STATE REGULATIONS. PAINTS/FINISHES/SOLVENTS - ALL PRODUCT WILL BE STORED IN TIGHTLY SEALED ORIGINAL CONTAINERS WHEN NOT IN USE. EXCESS PRODUCT, MATERIALS USED WITH THESE PRODUCTS AND PARAGRAPH IS NOT APPLICABLE TO UTILITY COMPANIES AND UTILITY CONTRACTORS IF THEY ARE SECONDARY PERMITTEES PERFORMING ONLY SERVICE LINE INSTALLATIONS OR WHEN CONDUCTING REPAIRS ON EXISTING LINE INSTALLATIONS.

**SPILL CLEANUP AND CONTROL PRACTICES**  
LOCAL STATE AND MANUFACTURER'S RECOMMENDED METHODS FOR SPILL CLEANUP WILL BE CLEARLY POSTED AND PROCEEDURES WILL BE MADE AVAILABLE TO SITE PERSONNEL.  
CONTAINERS FOR SPILL CLEANUP WILL BE KEPT IN THE MATERIAL STORAGE AREAS, TYPICAL MATERIALS AND EQUIPMENT INCLUDES, BUT IS NOT LIMITED TO, BROOMS, DUSTPANS, WIPES, RAGS, GLOVES, GARBAGE BAGS, SAND, SANDPAPER, PROPERLY LABELED PLASTIC AND METAL WASTE CONTAINERS, SPILL PREVENTION PRACTICES AND PROCEDURES. THE CONTRACTOR SHALL BE RESPONSIBLE FOR THE POTENTIAL FUTURE SPILLS. ALL SPILLS WILL BE CLEANED UP IMMEDIATELY UPON DISCOVERY. ALL SPILLS WILL BE REPORTED AS REQUIRED BY LOCAL, STATE AND FEDERAL REGULATIONS.

**HAZARDOUS WASTES**  
ALL HAZARDOUS WASTE MATERIALS WILL BE DISPOSED OF IN THE MANNER SPECIFIED BY LOCAL OR STATE REGULATION OR BY THE MANUFACTURER OF THE MATERIAL. ALL SITE PERSONNEL WILL BE INSTRUCTED IN THESE PROCEDURES AND THE CONTRACTOR WILL BE RESPONSIBLE FOR SEEING THAT THESE PROCEDURES ARE FOLLOWED.

**SANITARY WASTES**  
ALL SANITARY WASTES WILL BE COLLECTED FROM THE PORTABLE UNITS AND STORMWATER SEPTIC SYSTEMS BY A LICENSED SANITARY WASTE MANAGEMENT CONTRACTOR AS REQUIRED BY LOCAL OR STATE REGULATIONS.

**OFFSITE VEHICLE TRACKING**  
A STABILIZED CONSTRUCTION EXIT HAS BEEN PROVIDED TO HELP REDUCE VEHICLE TRACKING OF SEDIMENT. SEE SHEET ES-3 THROUGH ES-3 FOR CONSTRUCTION EXIT LOCATIONS. THE PAVED STREET ADJACENT THE SITE EXIT WILL BE INSPECTED DAILY FOR TRACKING OF MUD, DIRT OR ROCK. RAMP TRUCKS HAULING MATERIAL FROM THE CONSTRUCTION SITE WILL BE COVERED WITH A TARP/AUPLIN.

**TIMING OF CONTROLS**  
AS INDICATED ON THE ANTICIPATED ACTIVITY SCHEDULE ON SHEET ES-3, EROSION AND SEDIMENT CONTROLS AT THE PERMITTER AND THE CONSTRUCTION PERMITTEE WILL BE CONSTRUCTED PRIOR TO CLEARING OR GRADING OF ANY PORTION OF THE SITE. AREAS WHERE CONSTRUCTION ACTIVITIES ARE ANTICIPATED FOR MORE THAN 21 DAYS WILL BE STABILIZED WITH A TEMPORARY SEED AND/OR MULCH WITHIN 14 DAYS OF THE LAST DISTURBANCE. ONCE CONSTRUCTION ACTIVITY CEASES PERMANENTLY, AN INSPECTION PLAN WILL BE STABILIZED WITH PERMANENT SEED AND MULCH. AFTER THE ENTIRE SITE IS STABILIZED, ALL PERMITTER SEDIMENT CONTROLS WILL BE REMOVED.

**MAINTENANCE AND INSPECTION OF EROSION AND SEDIMENT CONTROL MEASUREMENTS**  
PRACTICES DESCRIBED IN THIS PLAN (SEE SHEETS ES-1-5 AND DETAIL SHEETS) AS WELL AS PRACTICES DESCRIBED IN EROSION, SEDIMENTATION AND POLLUTION CONTROL PLAN AND ACTIONS TAKEN IN ACCORDANCE WITH PART IV.D.4.B.(1) OF THE PERMIT SHALL BE MAINTAINED AND RETAINED AT THE SITE OR BE READILY AVAILABLE AT A DESIGNATED ALTERNATE LOCATION UNTIL THE ENTIRE SITE HAS UNDERGONE FINAL STABILIZATION AND A NOTICE OF TERMINATION IS SUBMITTED TO THE PERMITTEE. THIS PARAGRAPH IS NOT APPLICABLE TO UTILITY COMPANIES AND UTILITY CONTRACTORS IF THEY ARE SECONDARY PERMITTEES PERFORMING ONLY SERVICE LINE INSTALLATIONS OR WHEN CONDUCTING REPAIRS ON EXISTING LINE INSTALLATIONS.

**GENERAL REQUIREMENTS**  
(1) A REPORT OF EACH INSPECTION THAT INCLUDES THE NAME(S) OF PERSONNEL MAKING EACH INSPECTION, THE DATE(S) OF EACH INSPECTION, MAJOR OBSERVATIONS RELATING TO THE IMPLEMENTATION OF THE EROSION, SEDIMENTATION AND POLLUTION CONTROL PLAN AND ACTIONS TAKEN IN ACCORDANCE WITH PART IV.D.4.B.(1) OF THE PERMIT SHALL BE MADE AND RETAINED AT THE SITE OR BE READILY AVAILABLE AT A DESIGNATED ALTERNATE LOCATION UNTIL THE ENTIRE SITE HAS UNDERGONE FINAL STABILIZATION AND A NOTICE OF TERMINATION IS SUBMITTED TO THE PERMITTEE. THIS PARAGRAPH IS NOT APPLICABLE TO UTILITY COMPANIES AND UTILITY CONTRACTORS IF THEY ARE SECONDARY PERMITTEES PERFORMING ONLY SERVICE LINE INSTALLATIONS OR WHEN CONDUCTING REPAIRS ON EXISTING LINE INSTALLATIONS.

**GENERAL REQUIREMENTS**  
(1) A USGS TOPOGRAPHIC MAP, A TOPOGRAPHIC PHOTO OR A DRAWING (REFERRED TO AS A TOPOGRAPHIC MAP) THAT IS A SCALE EQUAL TO OR FINEER THAN 1:25,000 SHALL SHOWING THE LOCATION OF THE SITE OR THE COMMON DEVELOPMENT, (A) THE LOCATION OF ALL PERMANENT STREETS AND OTHER WATER BODIES AS SHOWN ON A USGS TOPOGRAPHIC MAP, AND ALL OTHER PERMANENT WATER BODIES, (B) THE LOCATION OF THE STORM WATER MAINS, (C) THE LOCATION OF THE STORM WATER MAINS, (D) THE LOCATION OF THE STORM WATER MAINS, (E) THE LOCATION OF THE STORM WATER MAINS, (F) THE LOCATION OF THE STORM WATER MAINS, (G) THE LOCATION OF THE STORM WATER MAINS, (H) THE LOCATION OF THE STORM WATER MAINS, (I) THE LOCATION OF THE STORM WATER MAINS, (J) THE LOCATION OF THE STORM WATER MAINS, (K) THE LOCATION OF THE STORM WATER MAINS, (L) THE LOCATION OF THE STORM WATER MAINS, (M) THE LOCATION OF THE STORM WATER MAINS, (N) THE LOCATION OF THE STORM WATER MAINS, (O) THE LOCATION OF THE STORM WATER MAINS, (P) THE LOCATION OF THE STORM WATER MAINS, (Q) THE LOCATION OF THE STORM WATER MAINS, (R) THE LOCATION OF THE STORM WATER MAINS, (S) THE LOCATION OF THE STORM WATER MAINS, (T) THE LOCATION OF THE STORM WATER MAINS, (U) THE LOCATION OF THE STORM WATER MAINS, (V) THE LOCATION OF THE STORM WATER MAINS, (W) THE LOCATION OF THE STORM WATER MAINS, (X) THE LOCATION OF THE STORM WATER MAINS, (Y) THE LOCATION OF THE STORM WATER MAINS, (Z) THE LOCATION OF THE STORM WATER MAINS.

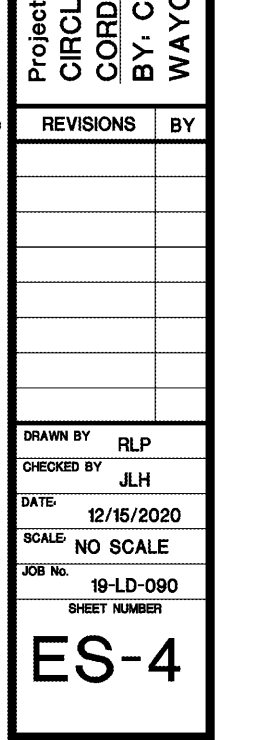
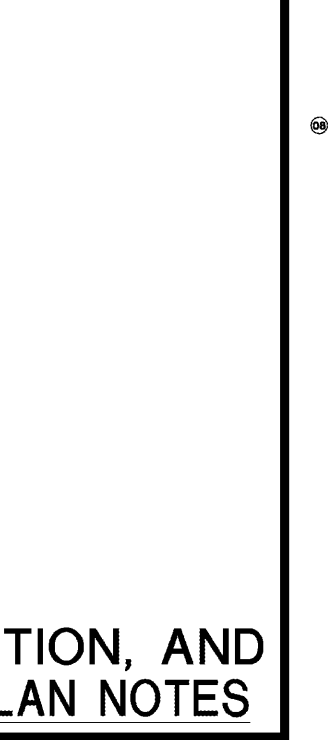
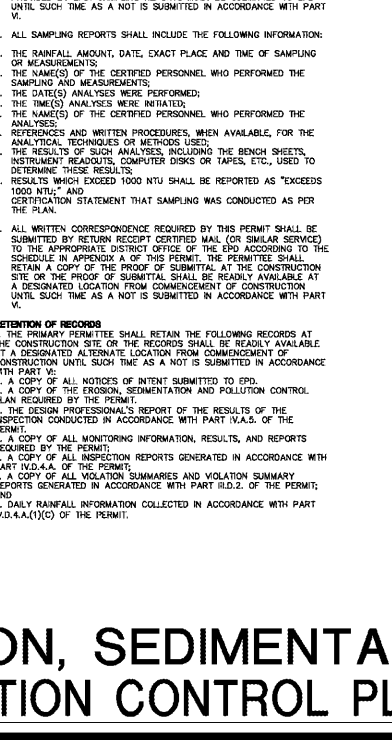
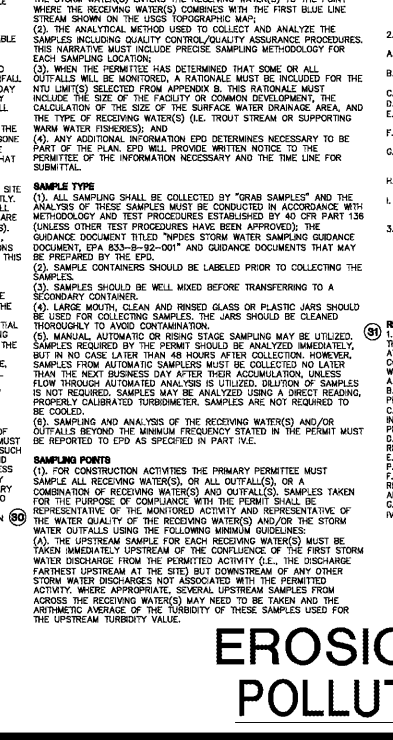
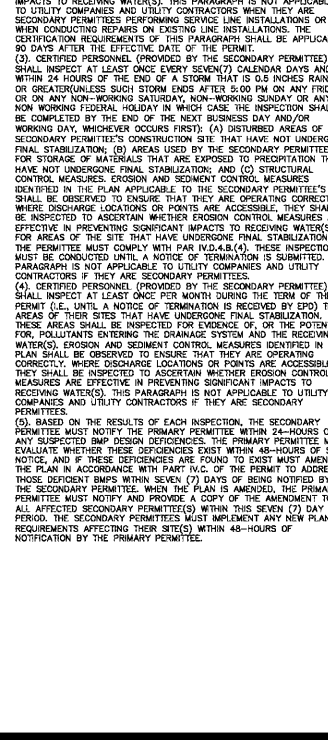
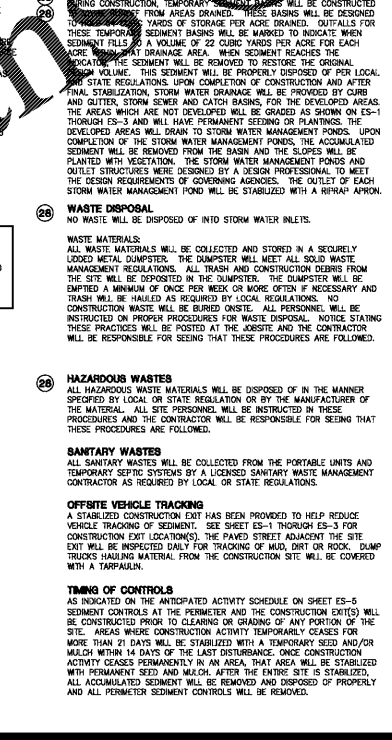
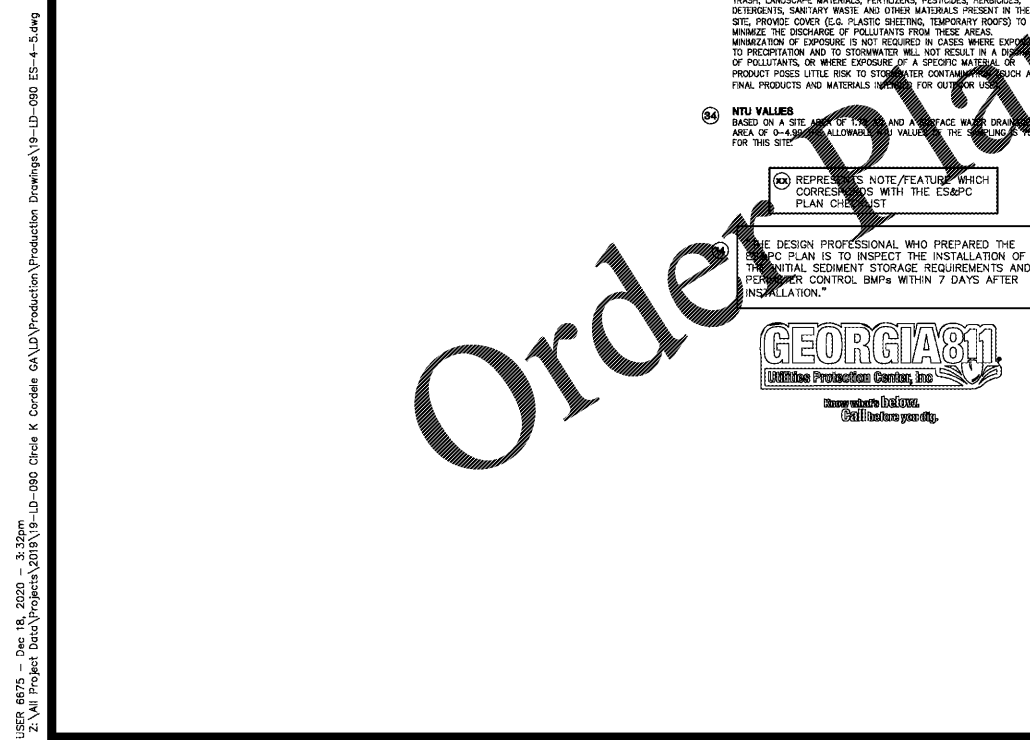
**EROSION, SEDIMENTATION, AND POLLUTION CONTROL NARRATIVE**  
(1) A REPORT OF EACH INSPECTION THAT INCLUDES THE NAME(S) OF PERSONNEL MAKING EACH INSPECTION, THE DATE(S) OF EACH INSPECTION, MAJOR OBSERVATIONS RELATING TO THE IMPLEMENTATION OF THE EROSION, SEDIMENTATION AND POLLUTION CONTROL PLAN AND ACTIONS TAKEN IN ACCORDANCE WITH PART IV.D.4.B.(1) OF THE PERMIT SHALL BE MADE AND RETAINED AT THE SITE OR BE READILY AVAILABLE AT A DESIGNATED ALTERNATE LOCATION UNTIL THE ENTIRE SITE HAS UNDERGONE FINAL STABILIZATION AND A NOTICE OF TERMINATION IS SUBMITTED TO THE PERMITTEE. THIS PARAGRAPH IS NOT APPLICABLE TO UTILITY COMPANIES AND UTILITY CONTRACTORS IF THEY ARE SECONDARY PERMITTEES PERFORMING ONLY SERVICE LINE INSTALLATIONS OR WHEN CONDUCTING REPAIRS ON EXISTING LINE INSTALLATIONS.

**GENERAL REQUIREMENTS**  
(1) A USGS TOPOGRAPHIC MAP, A TOPOGRAPHIC PHOTO OR A DRAWING (REFERRED TO AS A TOPOGRAPHIC MAP) THAT IS A SCALE EQUAL TO OR FINEER THAN 1:25,000 SHALL SHOWING THE LOCATION OF THE SITE OR THE COMMON DEVELOPMENT, (A) THE LOCATION OF ALL PERMANENT STREETS AND OTHER WATER BODIES AS SHOWN ON A USGS TOPOGRAPHIC MAP, AND ALL OTHER PERMANENT WATER BODIES, (B) THE LOCATION OF THE STORM WATER MAINS, (C) THE LOCATION OF THE STORM WATER MAINS, (D) THE LOCATION OF THE STORM WATER MAINS, (E) THE LOCATION OF THE STORM WATER MAINS, (F) THE LOCATION OF THE STORM WATER MAINS, (G) THE LOCATION OF THE STORM WATER MAINS, (H) THE LOCATION OF THE STORM WATER MAINS, (I) THE LOCATION OF THE STORM WATER MAINS, (J) THE LOCATION OF THE STORM WATER MAINS, (K) THE LOCATION OF THE STORM WATER MAINS, (L) THE LOCATION OF THE STORM WATER MAINS, (M) THE LOCATION OF THE STORM WATER MAINS, (N) THE LOCATION OF THE STORM WATER MAINS, (O) THE LOCATION OF THE STORM WATER MAINS, (P) THE LOCATION OF THE STORM WATER MAINS, (Q) THE LOCATION OF THE STORM WATER MAINS, (R) THE LOCATION OF THE STORM WATER MAINS, (S) THE LOCATION OF THE STORM WATER MAINS, (T) THE LOCATION OF THE STORM WATER MAINS, (U) THE LOCATION OF THE STORM WATER MAINS, (V) THE LOCATION OF THE STORM WATER MAINS, (W) THE LOCATION OF THE STORM WATER MAINS, (X) THE LOCATION OF THE STORM WATER MAINS, (Y) THE LOCATION OF THE STORM WATER MAINS, (Z) THE LOCATION OF THE STORM WATER MAINS.

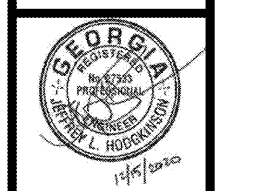
**GENERAL REQUIREMENTS**  
(1) A USGS TOPOGRAPHIC MAP, A TOPOGRAPHIC PHOTO OR A DRAWING (REFERRED TO AS A TOPOGRAPHIC MAP) THAT IS A SCALE EQUAL TO OR FINEER THAN 1:25,000 SHALL SHOWING THE LOCATION OF THE SITE OR THE COMMON DEVELOPMENT, (A) THE LOCATION OF ALL PERMANENT STREETS AND OTHER WATER BODIES AS SHOWN ON A USGS TOPOGRAPHIC MAP, AND ALL OTHER PERMANENT WATER BODIES, (B) THE LOCATION OF THE STORM WATER MAINS, (C) THE LOCATION OF THE STORM WATER MAINS, (D) THE LOCATION OF THE STORM WATER MAINS, (E) THE LOCATION OF THE STORM WATER MAINS, (F) THE LOCATION OF THE STORM WATER MAINS, (G) THE LOCATION OF THE STORM WATER MAINS, (H) THE LOCATION OF THE STORM WATER MAINS, (I) THE LOCATION OF THE STORM WATER MAINS, (J) THE LOCATION OF THE STORM WATER MAINS, (K) THE LOCATION OF THE STORM WATER MAINS, (L) THE LOCATION OF THE STORM WATER MAINS, (M) THE LOCATION OF THE STORM WATER MAINS, (N) THE LOCATION OF THE STORM WATER MAINS, (O) THE LOCATION OF THE STORM WATER MAINS, (P) THE LOCATION OF THE STORM WATER MAINS, (Q) THE LOCATION OF THE STORM WATER MAINS, (R) THE LOCATION OF THE STORM WATER MAINS, (S) THE LOCATION OF THE STORM WATER MAINS, (T) THE LOCATION OF THE STORM WATER MAINS, (U) THE LOCATION OF THE STORM WATER MAINS, (V) THE LOCATION OF THE STORM WATER MAINS, (W) THE LOCATION OF THE STORM WATER MAINS, (X) THE LOCATION OF THE STORM WATER MAINS, (Y) THE LOCATION OF THE STORM WATER MAINS, (Z) THE LOCATION OF THE STORM WATER MAINS.

**GENERAL REQUIREMENTS**  
(1) A USGS TOPOGRAPHIC MAP, A TOPOGRAPHIC PHOTO OR A DRAWING (REFERRED TO AS A TOPOGRAPHIC MAP) THAT IS A SCALE EQUAL TO OR FINEER THAN 1:25,000 SHALL SHOWING THE LOCATION OF THE SITE OR THE COMMON DEVELOPMENT, (A) THE LOCATION OF ALL PERMANENT STREETS AND OTHER WATER BODIES AS SHOWN ON A USGS TOPOGRAPHIC MAP, AND ALL OTHER PERMANENT WATER BODIES, (B) THE LOCATION OF THE STORM WATER MAINS, (C) THE LOCATION OF THE STORM WATER MAINS, (D) THE LOCATION OF THE STORM WATER MAINS, (E) THE LOCATION OF THE STORM WATER MAINS, (F) THE LOCATION OF THE STORM WATER MAINS, (G) THE LOCATION OF THE STORM WATER MAINS, (H) THE LOCATION OF THE STORM WATER MAINS, (I) THE LOCATION OF THE STORM WATER MAINS, (J) THE LOCATION OF THE STORM WATER MAINS, (K) THE LOCATION OF THE STORM WATER MAINS, (L) THE LOCATION OF THE STORM WATER MAINS, (M) THE LOCATION OF THE STORM WATER MAINS, (N) THE LOCATION OF THE STORM WATER MAINS, (O) THE LOCATION OF THE STORM WATER MAINS, (P) THE LOCATION OF THE STORM WATER MAINS, (Q) THE LOCATION OF THE STORM WATER MAINS, (R) THE LOCATION OF THE STORM WATER MAINS, (S) THE LOCATION OF THE STORM WATER MAINS, (T) THE LOCATION OF THE STORM WATER MAINS, (U) THE LOCATION OF THE STORM WATER MAINS, (V) THE LOCATION OF THE STORM WATER MAINS, (W) THE LOCATION OF THE STORM WATER MAINS, (X) THE LOCATION OF THE STORM WATER MAINS, (Y) THE LOCATION OF THE STORM WATER MAINS, (Z) THE LOCATION OF THE STORM WATER MAINS.

**GENERAL REQUIREMENTS**  
(1) A USGS TOPOGRAPHIC MAP, A TOPOGRAPHIC PHOTO OR A DRAWING (REFERRED TO AS A TOPOGRAPHIC MAP) THAT IS A SCALE EQUAL TO OR FINEER THAN 1:25,000 SHALL SHOWING THE LOCATION OF THE SITE OR THE COMMON DEVELOPMENT, (A) THE LOCATION OF ALL PERMANENT STREETS AND OTHER WATER BODIES AS SHOWN ON A USGS TOPOGRAPHIC MAP, AND ALL OTHER PERMANENT WATER BODIES, (B) THE LOCATION OF THE STORM WATER MAINS, (C) THE LOCATION OF THE STORM WATER MAINS, (D) THE LOCATION OF THE STORM WATER MAINS, (E) THE LOCATION OF THE STORM WATER MAINS, (F) THE LOCATION OF THE STORM WATER MAINS, (G) THE LOCATION OF THE STORM WATER MAINS, (H) THE LOCATION OF THE STORM WATER MAINS, (I) THE LOCATION OF THE STORM WATER MAINS, (J) THE LOCATION OF THE STORM WATER MAINS, (K) THE LOCATION OF THE STORM WATER MAINS, (L) THE LOCATION OF THE STORM WATER MAINS, (M) THE LOCATION OF THE STORM WATER MAINS, (N) THE LOCATION OF THE STORM WATER MAINS, (O) THE LOCATION OF THE STORM WATER MAINS, (P) THE LOCATION OF THE STORM WATER MAINS, (Q) THE LOCATION OF THE STORM WATER MAINS, (R) THE LOCATION OF THE STORM WATER MAINS, (S) THE LOCATION OF THE STORM WATER MAINS, (T) THE LOCATION OF THE STORM WATER MAINS, (U) THE LOCATION OF THE STORM WATER MAINS, (V) THE LOCATION OF THE STORM WATER MAINS, (W) THE LOCATION OF THE STORM WATER MAINS, (X) THE LOCATION OF THE STORM WATER MAINS, (Y) THE LOCATION OF THE STORM WATER MAINS, (Z) THE LOCATION OF THE STORM WATER MAINS.



Project Title  
**CIRCLE K DIESEL EXPANSION  
CORDELE, GA (CRISP COUNTY)**  
BY: **CIRCLE K - SOUTH ATLANTIC DIVISION  
WAYCROSS, GA 31501**



7 East Congress Street, Suite 306  
Waycross, GA 31501  
912.771.6599 • www.depr.state.ga.us

REVISIONS BY

1	AS NOTED	RLP
2	AS NOTED	JLH

DRAWN BY: RLP  
CHECKED BY: JLH  
DATE: 12/15/2020  
SCALE: NO SCALE  
JOB No: 19-LD-090  
SHEET NUMBER: ES-4