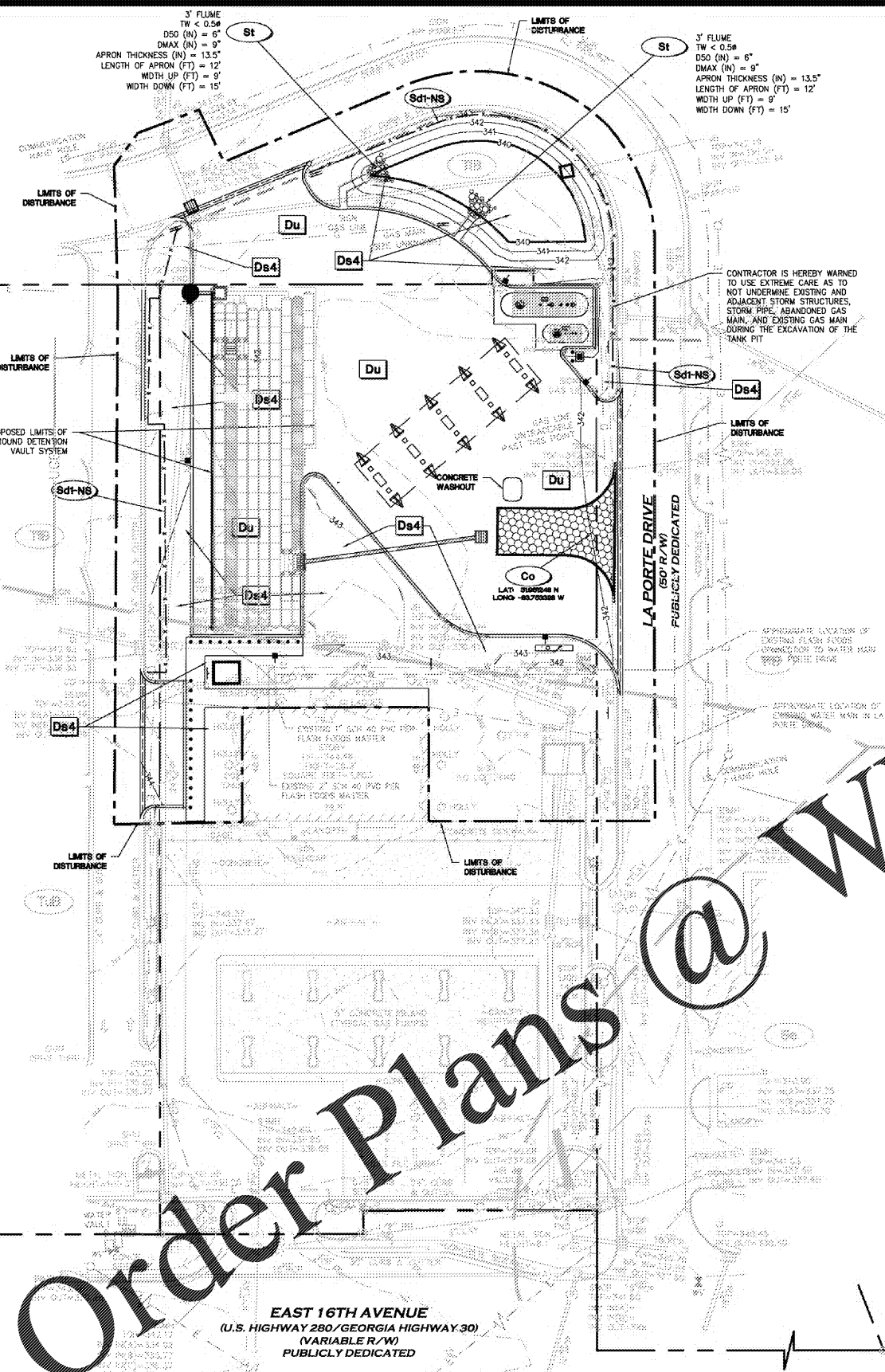


USER: 6675 - Dec 15, 2020 - 3:31pm
 Z:\AI Project Data\Projects\2019\19-LD-090 Circle K Cordele GA\LD\Production\Drawings\19-LD-090 MAIN.dwg - LAYOUT: ES-3 VERSION: 00000000



- PHASE III**
1. CONTINUE GRADING THE SITE AFTER BUILDING DEMOLITION HAS BEEN COMPLETED.
 2. PERMANENTLY STABILIZE AREAS TO BE VEGETATED AS THEY ARE BROUGHT TO FINAL GRADE.
 3. COMPLETE OFF-SITE ROADWAY WORK AND ASSOCIATED UNDERGROUND UTILITIES INSTALLING BMP'S AS SHOWN.
 4. PREPARE SITE FOR PAVING.
 5. PAVE THE SITE.
 6. INSTALL APPROPRIATE INLET PROTECTION DEVICES FOR PAVED AREAS AS WORK PROGRESSES.
 7. COMPLETE GRADING AND INSTALLATION OF PERMANENT STABILIZATION OVER ALL AREAS INCLUDING OUTLOTS.
 8. REMOVE ANY TEMPORARY DIVERSION DITCHES.

ACREAGE SUMMARY
(IN ACRES)

SITE AREA	1.72 AC±
ON-SITE DISTURBED AREA	0.90 AC±
OFF-SITE DISTURBED AREA	1.61 AC±
TOTAL DISTURBED AREA	1.51 AC±
IMPERVIOUS AREA AT COMPLETION	0.74 AC±
PERVIOUS AREA AT COMPLETION	0.44 AC±

DEVELOPER/OWNER:
 CIRCLE K - SOUTH ATLANTIC DIVISION
 215 PENDLETON ST.
 WAYCROSS, GA 31501
 (912) 490-2327

SITE OPERATOR/GENERAL CONTRACTOR:

SUPERINTENDENT:

24 HR LOCAL EMERGENCY CONTACT

REBECCA THIGPEN (912) 387-7259
 CIRCLE K - SOUTH ATLANTIC DIVISION

(CONTRACTOR'S NAME) (PHONE NUMBER)

NOTE: CONTRACTOR TO PROVIDE UPDATED INFORMATION ONCE CONTRACT IS AWARDED.

SOIL SERIES LEGEND

Se STILSON LOAMY SAND, 0-2% SLOPES, HSG
 Tfb TIFTON LOAMY SAND, 2-5% SLOPES, HSG B
 TuB TIFTON UMBRA LOAM, COMPLEX, 2-5% SLOPES, HSG

MULCHING SCHEDULE

MULCHING MATERIAL	RATE/ACRE
STRAW OR HAY	2.5 TONS
WOOD WASTE, CHIPS, SAWDUST, OR BARK	6 TO 9 TONS (2 TO 3" DEEP)

TEMPORARY SEEDING SCHEDULE

SPECIES (MIXTURE OF)	RATE/ACRE	PLANTING DATES
SUDAN (SWEET OR TIFT)	60 LBS	APRIL 1-SEPT 1
ANNUAL RYE GRASS	40 LBS	AUG 1-APRIL 15

NOTE: APPLY LIME AT THE RATE OF 1 TON/ACRE REFER TO ES-5 FOR FERTILIZER REQUIREMENTS

PERMANENT SEEDING SCHEDULE

SPECIES	RATE/ACRE	PLANTING DATES
COMMON BERMUDA (HULLED) (CYNODON DACTYLON)	10 LBS	MARCH 1-JULY 1
COMMON BERMUDA (UNHULLED) (CYNODON DACTYLON)	10 LBS	OCT 1-MAR 1
BAHIA PENSACOLA (PASPALUM NOTATUM)	60 LBS	JAN 1-DEC 31

NOTE: APPLY LIME AT THE RATE OF 1 TON/ACRE REFER TO ES-5 FOR FERTILIZER REQUIREMENTS

SOD PLANTING AND FERTILIZATION REQUIREMENTS

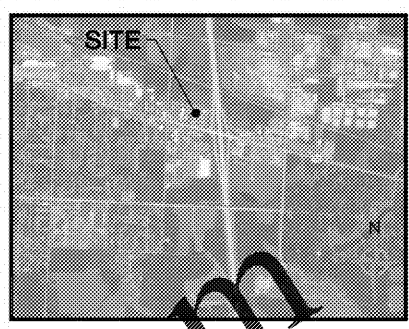
SPECIES	FERTILIZER (N-P-K)	RATE (lbs/AC)	NITROGEN TOP DRESSING RATE (lbs/AC)
BERMUDA GRASS (COMMON)	6-12-12	1,500	50-100

NOTE: APPLY LIME AT THE RATE OF 1 TON/ACRE REFER TO ES-5 FOR FERTILIZER REQUIREMENTS

PROVIDE TEMPORARY IRRIGATION OR WATERING, VIA WATER TRUCK, AS NEEDED TO ESTABLISH TEMPORARY AND PERMANENT VEGETATION UNTIL THE PERMANENT IRRIGATION SYSTEM IS FULLY FUNCTION OR UNTIL THE NOT IS SUBMITTED IF A PERMANENT IRRIGATION SYSTEM ISN'T PLANNED. AREAS NOT HAVING A PERMANENT IRRIGATION SYSTEM SHALL BE IRRIGATED OR WATERED UNTIL THE NOT HAS BEEN SUBMITTED AND ACCEPTED.

EROSION CONTROL LEGEND

- PROPERTY LINE
- LIMITS OF DISTURBANCE
- xxx--- CONTOUR ELEVATIONS
- STORM DRAIN
- SOIL SERIES BOUNDARY
- XX --- SILT FENCE
- TREE PROTECTION FENCE
- SWPPP INFORMATION SIGN
- TEMPORARY BARRICADE



STRUCTURAL PRACTICES

CODE	PRACTICE	DETAIL	MAP SYMBOL	DESCRIPTION
Co	CONSTRUCTION EXIT			A crushed stone pad located at the construction site and to provide a place for removing mud from tires thereby protecting public streets.
Sdt-NS	SEDIMENT BARRIERS			A barrier to prevent sediment from leaving the construction site. It may be sandbags, bags of stone or hay, brush, logs and poles, gravel, or a silt fence.
Sdt-NS	SALEST SODIUM TRAP			An impounding area created by accumulating around a storm drain stop sign. The excavated area will be filled and stabilized on completion of construction activities.
Rt	RETAIN FITTING			A device or structure placed in front of a permanent sedimentation pond and sediment structure to serve as a temporary sediment filter.
Tr	TREE PROTECTION			To protect desirable trees from injury during construction activity.
St	STORMWATER POLLUTION PREVENTION			A silt or short section of silt trap channel at the outlet of a storm drain system preventing erosion from the concentrated runoff.

VEGETATIVE PRACTICES

CODE	PRACTICE	DETAIL	MAP SYMBOL	DESCRIPTION
Ds1	PREPARED AREA STABILIZATION (SEEDING ONLY)			Establishing temporary protection for disturbed areas where seedlings may not have a suitable growing season to produce an erosion reducing cover.
Ds2	DISTURBED AREA STABILIZATION (VEGETATION SEEDING)			Establishing a temporary vegetative cover with fast growing seedlings on disturbed areas.
Ds3	SECURED AREA STABILIZATION (WITH PERM SEEDING)			Establishing a permanent vegetative cover such as trees, shrubs, vines, grasses, or legumes on disturbed areas.
Ds4	SECURED AREA STABILIZATION (SOILS)			A permanent vegetative cover using soils on highly erodible or artificially eroded lands.
Du	SILT CONTROL ON DISTURBED AREAS			Controlling surface and soil movement of dirt on construction site, roadways and similar sites.
Ss	SILT STABILIZATION			A protective covering used to prevent erosion and stabilize temporary or permanent vegetation on steep slopes, shore lines, or channels.

CONSERVATION COMMISSION NOTES

EROSION CONTROL MEASURES WILL BE MAINTAINED AT ALL TIMES. IF FULL IMPLEMENTATION OF THE APPROVED PLAN DOES NOT PROVIDE FOR EFFECTIVE EROSION CONTROL, ADDITIONAL EROSION AND SEDIMENT CONTROL MEASURES SHALL BE IMPLEMENTED TO CONTROL OR TREAT THE SEDIMENT SOURCE.

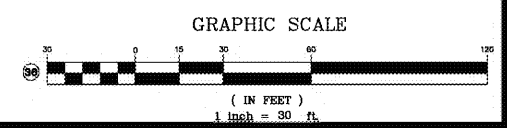
THE ESCAPE OF SEDIMENT FROM THE SITE SHALL BE PREVENTED BY THE INSTALLATION OF SEDIMENT CONTROL MEASURES AND PRACTICES PRIOR TO LAND-DISTURBING ACTIVITIES.

ALL EROSION & SEDIMENT CONTROL MEASURES WILL BE CHECKED DAILY AND ANY DEFICIENCIES NOTED WILL BE CORRECTED BY THE END OF EACH DAY. ADDITIONAL EROSION AND SEDIMENT CONTROL MEASURES WILL BE INSTALLED IF DEEMED NECESSARY AFTER ONSITE INSPECTION BY THE ISSUING AUTHORITY.

ANY DISTURBED AREA LEFT EXPOSED FOR A PERIOD GREATER THAN 14 DAYS SHALL BE STABILIZED WITH MULCH OR TEMPORARY SEEDINGS.

DEWATERING NOTE:
 WHEN PERFORMING GRADING OPERATIONS DURING PERIODS OF WET WEATHER, PROVIDE ADEQUATE DEWATERING, DRAINAGE AND GROUND WATER MANAGEMENT TO CONTROL MOISTURE OF SOILS.

**PHASE III
 EROSION, SEDIMENTATION,
 & POLLUTION CONTROL PLAN**



REPRESENTS NOTE/FEATURE WHICH CORRESPONDS WITH THE ES&PC PLAN CHECKLIST. SEE SHEET ES-4 FOR ES&PC CHECKLIST.



GSWCC# 3001

Project Title
**CIRCLE K DIESEL EXPANSION
 CORDELE, GA (CRISP COUNTY)
 BY: CIRCLE K - SOUTH ATLANTIC DIVISION
 WAYCROSS, GA 31501**

REVISIONS

NO.	REVISIONS	BY

DRAWN BY: RLP
 CHECKED BY: JLH
 DATE: 12/15/2020
 SCALE: 1" = 30'
 JOB No. 19-LD-090
 SHEET NUMBER

ES-3