

SYMBOL LEGEND	
DETAIL	DESCRIPTION
⊕	DUPLEX 125V-20A-2 POLE-3 WIRE STRAIGHT BLADE RECEPTACLE OUTLET - WALL MTD. (24" A.F.F., - U.O.N.)
⊙	SINGLE 125V-20A-2 POLE-3 WIRE STRAIGHT BLADE RECEPTACLE OUTLET - WALL MTD. (24" A.F.F., - U.O.N.)
1	DRYWALL P-RING
B	BUMP-BAR
T	TELEPHONE OUTLET FOR P.O.S. MODEM (ALL OUTLETS HOMERUN IN 3/4" CONDUIT TO TELEPHONE BACKBOARD) @ 96" A.F.F.
P	P.O.S. PRINTER DEVICE
R	P.O.S. REGISTER DEVICE
D	VIDEO DISPLAY DEVICE (STANDING MTD.)
	SECURITY CAMERA BY "PRIVID-EYE" CONTACT: "PRIVID-EYE" SATTTLER, 954-581-1756
	SECURITY MONITOR BY "PRIVID-EYE" THE DUPLEX RECEPTACLE @ 84" A.F.F. (VERIFY) CONNECT TO P.O.S. CIRCUIT

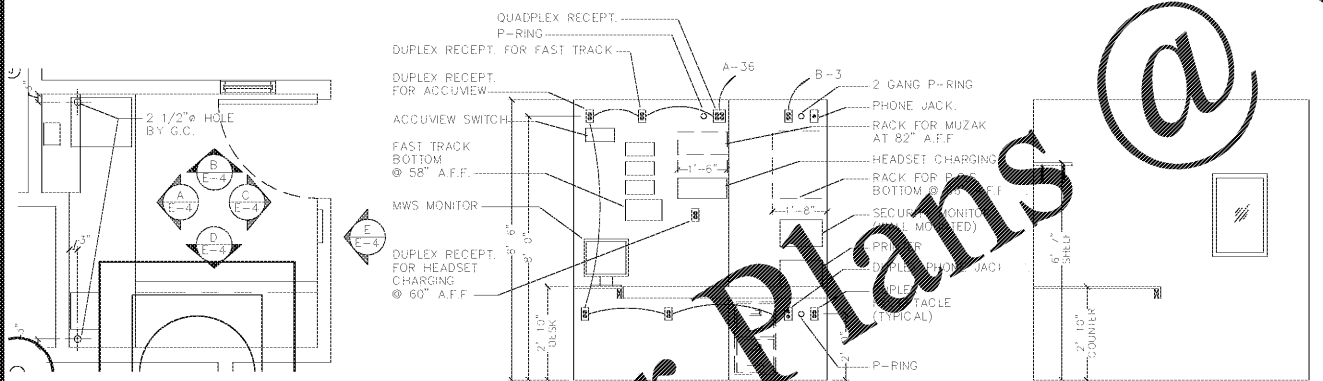
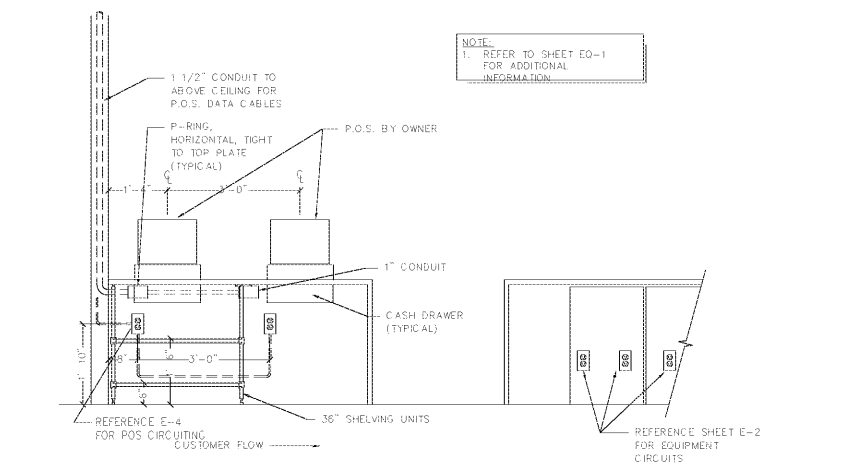
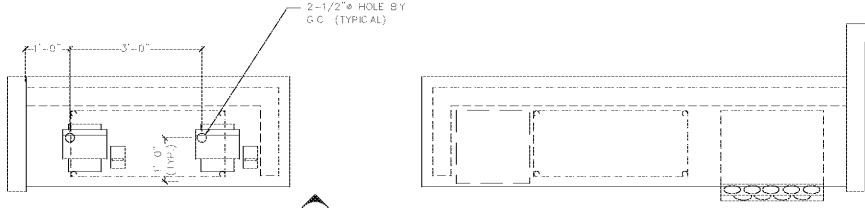
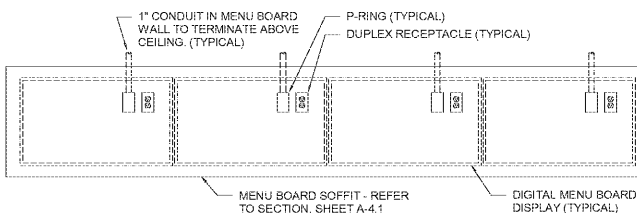
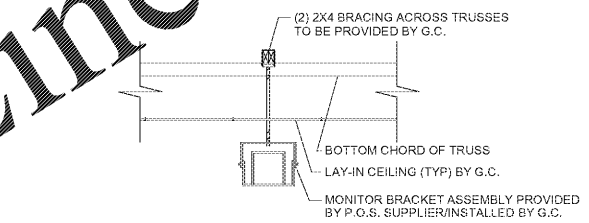
1 TECHNOLOGY PLAN
E-3.0 1/4" = 1'-0"

GENERAL NOTES:

- CONTRACTOR TO VERIFY WHICH SYSTEM IS TO BE INSTALLED. REQUIREMENTS CAN VARY DEPENDING ON MANUFACTURER. THE CONTRACTOR IS CAUTIONED TO VERIFY ALL REQUIREMENTS PRIOR TO CONSTRUCTION.
- CONTRACTOR TO PROVIDE ALL RECEPTACLE OUTLETS, CONDUITS AND J-BOXES AS INDICATED ON PLAN.
- CONTRACTOR TO VERIFY AND COORDINATE LOCATION OF VIDEO DISPLAY DEVICES W/ BURGER KING REPRESENTATIVE.
- MAINTAIN P.O.S. CABLES A MIN. OF 12" AWAY FROM ANY FLUORESCENT LIGHT SOURCES ABOVE CEILING.
- ELECTRICAL CONTRACTOR TO IDENTIFY P.O.S. JUNCTION BOXES ABOVE CEILING "GROUND P.O.S. ONLY".

KEYED PLAN NOTES:

- DISPLAY #1 AND BUMP BAR. PROVIDE 4" CONDUIT FOR VIDEO, BUMP BAR AND PRINTERS. PROVIDE CEILING MOUNTED RECEPTACLES. (TYPICAL FOR DISPLAY #1, #2 AND #3)
- DISPLAY #2 AND BUMP BAR
- DISPLAY #3 AND BUMP BAR
- STOCK LEVEL LIGHT CONTROLLER @ 60" A.F.F.
- TOTAL SERVICE TIME DISPLAY
- GRADE DISPLAY
- CLOCK-RECEPT. IN CHASE
- STOCK LEVEL DISPLAY RECEPT. IN CHASE
- EQUIPMENT MOUNTED RECEPTACLES BY K.E.S. CIRCUITING RUNS BY E.C.
- J-BOX W/ 3/4" CONDUIT @ 84" A.F.F.
- CEILING MOUNTED D/T TIMER WINDOW TIME DISPLAY
- 90" A.F.F. FOR D/T LAND MONITOR.
- P-RING @ 24" A.F.F. W/ 1" CONDUIT TO ABOVE CLG.
- J-BOX W/ 1" CONDUIT TO CLG. FOR PHU DATA CABLE. (LOCATE NEXT TO PHU RECEPT.)
- SECURITY CAMERA (TYPICAL)
- SECURITY MONITOR (TYPICAL)



Order Plans @ WWW.LDILine.com

ROBERISON LOIA ROOF ARCHITECTS & ENGINEERS
3460 Preston Ridge Road, Suite 275, Alpharetta, GA 30005
770.224.2300
GA COA #PE060592 EXPIRES 06/30/2022



PALMETTO BURGER KING
3765 ROOSEVELT HWY, PALMETTO, GA.
FOR: **JP DESIGN & CONSTRUCTION**
JACKSON, GA

REVISIONS

TECHNOLOGY PLAN
DATE: 10-30-20
PROJECT NUMBER: 20-197
SHEET NUMBER: E-3.0