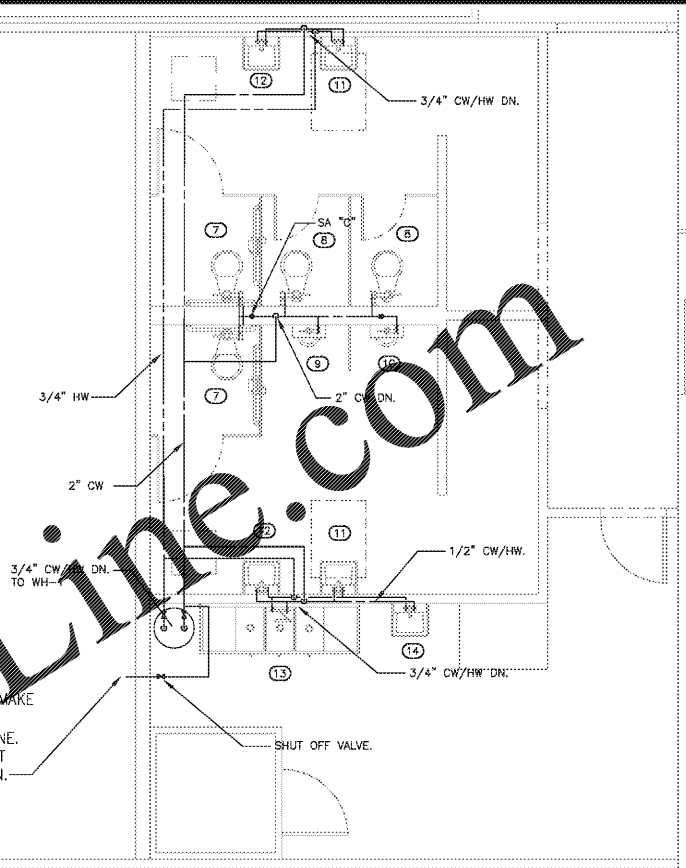


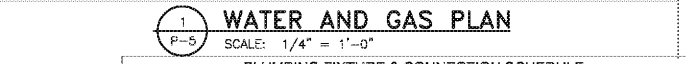


REVISIONS

NO.	DESCRIPTION



2 WATER RISER DIAGRAM
 SCALE: NONE



1 WATER AND GAS PLAN
 SCALE: 1/4" = 1'-0"

PLUMBING FIXTURE & CONNECTION SCHEDULE

FIXTURE	NAME / TYPE	ACCESSORIES (REMARKS)	TRAP	WASTE	VENT	H.W.	C.W.
7	WATER CLOSET (A.D.A.) KOHLER KINGSTON K-4325-9	WITH WHITE FINISH, ELONGATED WITH SLOAN ROYAL OPTIMA 1.28 GPF BATTERY OPERATED FLUSH VALVE, KOHLER HEAVY DUTY, WHITE OPEN FRONT SEAT, LESS COVER, 35 CHECK HINGE, K-4751 WALL MOUNT AT 40" HEIGHT.	4"	4"	2"	-	1"
8	WATER CLOSET KOHLER KINGSTON K-4325-9	WITH WHITE FINISH, ELONGATED WITH SLOAN ROYAL OPTIMA 1.28 GPF BATTERY OPERATED FLUSH VALVE, KOHLER HEAVY DUTY, WHITE OPEN FRONT SEAT, LESS COVER, 35 CHECK HINGE, K-4751 WALL MOUNT AT STANDARD HEIGHT.	4"	4"	2"	-	1"
9	URINAL (ADA) KOHLER MODEL K-5046	3/4" TOP SPUD, WALL URINAL WITH S-5 STRAINER, 5 GPF SLOAN ROYAL OPTIMA 1.28 GPF BATTERY OPERATED FLUSH VALVE, PROVIDE WITH CARRIER BY J.R. SMITH OR EQUAL, MOUNT @ 17" TO HIM.	2"	2"	2"	-	3/4"
10	URINAL KOHLER MODEL K-5046	3/4" TOP SPUD, WALL URINAL WITH S-5 STRAINER, 5 GPF SLOAN ROYAL OPTIMA 1.28 GPF BATTERY OPERATED FLUSH VALVE, PROVIDE WITH CARRIER BY J.R. SMITH OR EQUAL.	2"	2"	2"	-	3/4"
11	LAVATORY (ADA) KOHLER MODEL K-2051	ONE HOLE, SLOAN EAF 250-P-6M CHROME AUTOMATIC OPERATED FAUCET, 0.5 GPM AERATOR WITH BUILT IN MIXING VALVE, WITH GRID STRAINER, MIRROR, BROP, TRAP (INCLUDE WATER & DRAIN), PROVIDE WITH CARRIER BY J.R. SMITH OR EQUAL, TRIERING 160 LAVE GUARD, PROVIDE WITH WATTS TMY MODEL LF1515-0, MEETING ASSE 1070, PROVIDE LAVGUARD.	1-1/4"	1-1/4"	2"	10"	10"
12	LAVATORY WALL MOUNTED KOHLER MODEL K-2051	ONE HOLE, SLOAN EAF 250-P-6M CHROME AUTOMATIC OPERATED FAUCET, 0.5 GPM AERATOR WITH BUILT IN MIXING VALVE, WITH GRID STRAINER, MIRROR, BROP, TRAP (INCLUDE WATER & DRAIN), PROVIDE WITH CARRIER BY J.R. SMITH OR EQUAL, TRIERING 160 LAVE GUARD, PROVIDE WITH WATTS TMY MODEL LF1515-0, MEETING ASSE 1070, PROVIDE LAVGUARD.	1-1/4"	1-1/4"	2"	10"	10"
13	3 COMP SINK	FURNISHED BY EQUIPMENT SUPPLIER, INSTALLED AND CONNECTED BY PLUMBING CONTRACTOR. FAUCET TO BE ADJUSTED TO 1.5 GPM FLOW RATE.	3"	3"	2"	3/4"	3/4"
14	HAND SINK	FURNISHED BY EQUIPMENT SUPPLIER, INSTALLED AND CONNECTED BY PLUMBING CONTRACTOR. FAUCET TO BE ADJUSTED TO 1.0 GPM FLOW RATE. HEIGHT TO BE ADA ACCESSIBLE, INSULATE CUPW/ND DRAIN, PROVIDE WITH WATTS TMY MODEL LF1515-0, MEETING ASSE 1070, PROVIDE LAVGUARD.	1-1/4"	1-1/4"	2"	10"	10"
ED.1	FLOOR DRAIN SLOUX CHIEF 832-30PRR	WITH TRAP GUARD	3"	3"	-	-	-
SA	J.R. SMITH MODEL 5049-020	BELOW TYPE (SEE DRAWINGS FOR MODEL SPECIFIC), MOUNT MIN. 6" ABOVE PIPE IN WALL	-	-	-	-	-
HW/H	WOODFORD MODEL 987	FULLY RECESSED FREEZE PROOF, ANTI-SIPHON AND ALTERNATE DRAWING WITH C INLET, ALL PIPING TO BE ROUTED IN WALLS	-	-	-	-	3/4"
HB	WOODFORD MODEL 28	KEYED HOSE BIBB, MOUNT BELOW SINK 12" A.F.F.	-	-	-	-	3/4"
ED	CLEANOUT 8" FINISHED AREA SLOUX CHIEF 834-4PRR	ADJUSTABLE CLEANOUT WINKEL-BRONZE TOP	-	-	-	-	-
ED EXTERNAL	EXTERIOR CLEANOUT SLOUX CHIEF 834-4PR	ADJUSTABLE CLEANOUT IN CONCRETE PAD AT GRADE, HEAVY DUTY GUCLE, BORN IN AND COVER	-	-	-	-	-
W/C	WALL CLEANOUT SLOUX CHIEF 873	CLEANOUT COVER KIT W/BRASS BLUG AND STAINLESS STEEL POLISHED TOP	-	-	-	-	-
ES.1	FLOOR SINK J.R. SMITH 3110	ADJUSTABLE STRAINER, TOP WITH SECURED GRATE, DURA COATED CAST IRON BODY WITH HALF GRATE 3" DRAIN WITH 8" DIA. OPENING FOR KITCHEN AREA. SEE DRAWINGS (SEE J.R. SMITH 3111 & 3113 COMP 4PR1)	3"	3"	-	-	-

WATER HEATER SCHEDULE

FIXTURE	NAME / TYPE	ACCESSORIES (REMARKS)	TRAP	WASTE	VENT	H.W.	C.W.
WH.1	A.G. SMITH SRE-22-B	1BK, 50 GALLON SEE DETAIL S/P1-B	-	-	-	3/4"	3/4"

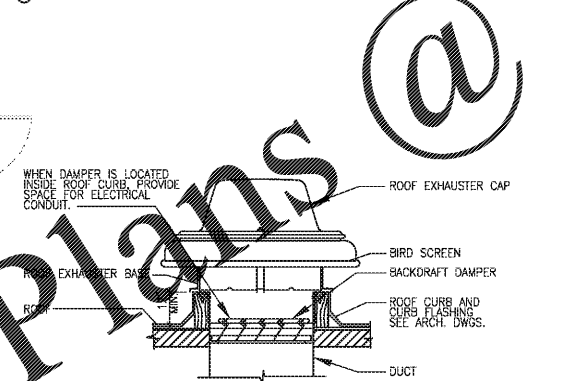
AIR DISTRIBUTION SCHEDULE

MARK	TYPE	SIZE IN INCHES		FINISH	O.B.D.	BASIS OF DESIGN (TITUS)	NOTES
		NECK	FACE				
R1	EXHAUST	8"x8"	24"x24"	WHITE	NO	5	① ②
R2	EXHAUST	10"x10"	12"x12"	④	YES	5	① ② ③

- DIFFUSER/GRILLE MOUNTING STYLE SHALL BE CONFIRMED WITH REFLECTED CEILING PLAN. DIFFUSERS/GRILLES PROVIDED AND INSTALLED BY CONTRACTOR. CONTRACTOR IS RESPONSIBLE FOR SCHEDULING, RECEIPT, AND COMPLETE INSTALLATION OF AIR TERMINAL DEVICES.
- PROVIDE SQUARE TO ROUND TRANSITION WHEN REQUIRED.
- OPPOSED BLADE DAMPER TO BE ACCESSIBLE FROM FACE OF GRILLE/DIFFUSER FOR AIR BALANCING.
- MATCH FINISH COLOR OF ADJACENT MATERIAL.

MECHANICAL NOTES

- ALL MECHANICAL EQUIPMENT SHALL BE INSTALLED IN ACCORDANCE WITH MANUFACTURER'S RECOMMENDATIONS AND LOCAL CODES.
- IT IS THE RESPONSIBILITY OF THE GENERAL CONTRACTOR TO RECEIVE, OFFLOAD, AND STORE ALL HVAC MATERIALS WHICH ARRIVE AT THE JOB SITE. GENERAL CONTRACTOR WILL REIMBURSE OWNER FOR ANY DAMAGE TO EQUIPMENT THAT OCCURS DURING TRANSPORTATION.
- GENERAL CONTRACTOR IS TO PROVIDE ANY SCREENING, GUARD RAILS, ETC. FOR ROOF-MOUNTED HVAC EQUIPMENT PER IBC AND LOCAL CODES.
- DUCT SIZES ARE SHOWN AS CLEAR INSIDE FREE AREA DIMENSIONS, PROVIDE FLEXIBLE CONNECTIONS WHERE DUCTS CONNECT TO UNIT (IN RISER); RUN ALL DUCTWORK AS HIGH AS POSSIBLE TO AVOID INTERFERENCE OF INTERSECTING DUCT. ALL DUCTWORK SHALL BE INDEPENDENTLY HUNG FROM STRUCTURAL MEMBERS. COORDINATE ELEVATION AND LOCATION WITH RAIN LEADERS, WATER PIPING, PLUMBING VENTS, AND MAJOR ELECTRICAL CONDUITS OR CABLE TRAY.
- PORTIONS OF DUCTWORK VISIBLE THROUGH GRILLES, REGISTERS, AND DIFFUSERS IN FINISHED AREAS SHALL BE PAINTED FLAT BLACK.
- ALL DUCTWORK SHALL BE GALVANIZED SHEET METAL AND SHALL BE FABRICATED AND INSTALLED IN ACCORDANCE WITH SMACNA LOW PRESSURE DUCT CONSTRUCTION STANDARDS (LATEST ISSUE). DUCT HANGERS AND SUPPORTS SHALL BE IN ACCORDANCE WITH SMACNA RECOMMENDATIONS.
- ALL CONTROL WIRING SHALL BE RUN INSIDE WALLS OR ABOVE CEILINGS, IN UNFINISHED AREAS, ROUTE CONTROL WIRING INSIDE CONDUIT IN JOIST SPACE. CONTRACTOR IS TO MAKE ALL LOW-VOLTAGE WIRING FINAL CONNECTIONS FOR ALL HVAC EQUIPMENT.
- THE MECHANICAL DRAWINGS ARE DIAGRAMMATIC AND SHOW THE RELATIONSHIP BETWEEN EQUIPMENT AND CONNECTIONS. DO NOT SCALE THE DRAWINGS FOR EXACT SIZE OR LOCATIONS. BUILDING DIMENSIONS SHALL BE TAKEN FROM ARCH. PLANS AND EQUIPMENT DIMENSIONS SHALL BE TAKEN FROM CERTIFIED EQUIPMENT DATA.
- CONTRACTOR TO COORDINATE VOLTAGE AND PHASE OF EACH PIECE OF EQUIPMENT WITH ELECTRICAL CONTRACTOR BEFORE ORDERING EQUIPMENT.
- ALL FANS 1/8 H.P. AND ABOVE SHALL HAVE FUSED DISCONNECT SWITCHES MOUNTED AT THE FAN. IF APPROVED BY LOCAL AUTHORITIES, NON-FUSED DISCONNECT SWITCHES MAY BE USED. DISCONNECTS SHALL BE TAKEN FROM ARCH. PLANS AND EQUIPMENT DIMENSIONS SHALL BE TAKEN FROM CERTIFIED EQUIPMENT DATA.
- CONTRACTOR TO COORDINATE ALL CLEARANCES PRIOR TO INSTALLATION OF EQUIPMENT AND MATERIAL. INSTALL ALL EQUIPMENT IN STRICT ACCORDANCE WITH THE MANUFACTURER'S INSTRUCTIONS AND RECOMMENDATIONS.
- PROVIDE BALANCING DAMPERS AT POINTS ON SUPPLY, RETURN AND EXHAUST SYSTEMS WHERE BRANCHES LEAD FROM LARGE DUCTS AS REQUIRED FOR AIR BALANCING. INSTALL AT A MINIMUM OF TWO DUCT WIDTHS FROM BRANCH TAKEOFF. UNLESS OTHERWISE NOTED, EVERY SUPPLY TAP COLLAR SHALL HAVE A LOCKING MANUAL VOLUME DAMPER. PROVIDE IDENTIFICATION OF THE LOCATION OF ALL FIRE AND BALANCING DAMPERS. IDENTIFICATION TAGS SHALL BE AFFIXED TO THE WALLS OR CEILINGS AND SHALL BE VISIBLE FROM THE OCCUPIED SPACE.
- OBTAINING ALL REQUIRED PERMITS AND PAYING ALL ASSOCIATED FEES ARE THE RESPONSIBILITY OF THE CONTRACTOR. ALL WORK SHALL BE DONE IN ACCORDANCE WITH THESE PLANS, SPECIFICATIONS, LOCAL, STATE AND NATIONAL CODES.
- THE CONTRACTOR SHALL FURNISH ALL LABOR, MATERIALS, EQUIPMENT AND TOOLS TO PERFORM MECHANICAL WORK AS SHOWN, NOTED OR SCHEDULED FOR A COMPLETE INSTALLATION.
- CONTRACTOR SHALL NOT ROUTE DUCTWORK ABOVE ELECTRICAL EQUIPMENT AND PANELS.
- ALL CONTRACTORS MUST COORDINATE EACH PIECE OF EQUIPMENT WITH ALL OTHER TRADES (GENERAL CONTRACTOR, PLUMBING CONTRACTOR, MECHANICAL CONTRACTOR, SPRINKLER CONTRACTOR, ELECTRICAL CONTRACTOR, ETC.) AFFECTED BY THAT PIECE OF EQUIPMENT (ROOF OPENINGS, WEIGHTS, POWER REQUIREMENTS, VOLTAGES, ETC.) PRIOR TO ORDERING EQUIPMENT AND AGAIN PRIOR TO INSTALLATION (ROOFTOP EQUIPMENT PRIOR TO LIFTING ONTO ROOF). NO EXTRA COMPENSATION WILL BE APPROVED IF COORDINATION IS NOT PERFORMED BY EACH RESPECTIVE CONTRACTOR AND SUBCONTRACTOR.
- CONTRACTOR SHALL VISIT SITE BEFORE SUBMITTING BID AND MAKE ALL NECESSARY OBSERVATIONS, MEASUREMENTS, AND NOTE CONDITIONS UNDER WHICH HIS WORK IS TO BE PERFORMED. NO EXTRA COMPENSATION WILL BE ALLOWED FOR FAILURE TO DO SO. THIS CONTRACT INVOLVES REMODELING OF EXISTING BUILDING AND THEREFORE SHALL FIELD LOCATE EXISTING DUCTWORK, PIPING, AIR TERMINAL DEVICES, ETC. BEFORE STARTING WORK.
- ANY MECHANICAL ITEMS IN QUESTION REGARDING REMOVAL/REUSE SHALL BE BROUGHT TO THE ATTENTION OF ARCHITECT/ENGINEER. CONTRACTOR SHALL SUBMIT A REQUEST FOR INFORMATION TO THE ARCHITECT/ENGINEER IN WRITING PRIOR TO REMOVAL OF ANY MECHANICAL ITEMS.
- ALL COSTS INCURRED BY ACCEPTANCE OF SUBSTITUTIONS SHALL BE BORNE BY CONTRACTOR. ANY ADDITIONAL COST/SERVICES RESULTING FROM PROPOSED SUBSTITUTE EQUIPMENT SHALL BE PROVIDED AT NO EXTRA COST TO THE OWNER.



4 ROOF MOUNTED POWER EXHAUSTER
 SCALE: NONE

DUCTWORK LEGEND

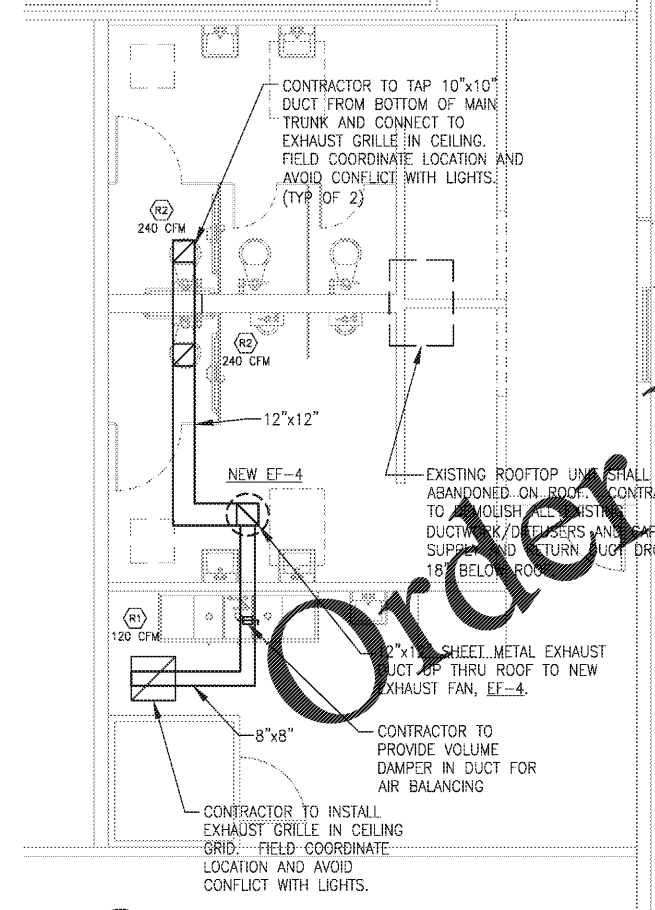
SYMBOLS & ABBREV	LEGEND
	EXISTING DUCT WORK, REMOVE AND DISCARD.
	EXISTING DUCT WORK TO REMAIN AND BE REUSED.
	NEW, INSTALLED DUCTWORK

THIS PROJECT IS A RENOVATION OF AN EXISTING FACILITY AND OF NECESSITY, PREVIOUS RECORD DRAWINGS FORM THE BASIS FOR MANY OF THESE DRAWINGS. IT IS THEREFORE EVEN MORE IMPORTANT THAN IN NEW CONSTRUCTION THAT ALL DIMENSIONS SHALL BE FIELD VERIFIED BEFORE FABRICATION OR PURCHASE OF DIMENSION CRITICAL EQUIPMENT, MATERIALS, AND ASSEMBLIES. THERE MAY EXIST FIELD CONDITIONS NOT ACCESSIBLE DURING DESIGN WHICH DIFFER FROM THOSE SHOWN ON THE DRAWINGS. ANY SUCH DEVIATIONS SHALL BE BROUGHT TO THE ATTENTION OF THE ARCHITECT AND KROGER ENGINEER FOR RESOLUTION BEFORE PROCEEDING WITH ANY CONSTRUCTION, FABRICATION, OR MATERIAL/EQUIPMENT PURCHASES WHICH WOULD BE UNUSABLE UNDER THOSE CIRCUMSTANCES.

FAN SCHEDULE

MARK	CFM	E.S.P. WG	DRIVE	H.P.	TYPE	BASIS OF DESIGN (CAPTIVEAIRE)	LOCATION/SERVICE	NOTES
EF-4	600	0.125"	DIRECT	0.18	CENTRIFUGAL	DR12HFA	RESTROOMS/STORAGE	① ② ③ ④ ⑤ ⑥

- FANS INSTALLED AND PROVIDED BY CONTRACTOR. CONTRACTOR IS RESPONSIBLE FOR SCHEDULING, RECEIPT, AND COMPLETE INSTALLATION OF FANS. INSTALL PER MANUFACTURER'S WRITTEN INSTRUCTIONS AND MAINTAIN ALL SERVICE CLEARANCES.
- PROVIDE ALUMINUM ROOF CURB FOR FAN AND FOR DUCT PENETRATION THROUGH ROOF. COORDINATE LOCATION WITH ARCHITECTURAL PLANS.
- PROVIDE BACKDRAFT DAMPER.
- NEMA DISCONNECT AND VIBRATION ISOLATION FOR MOTOR/FAN ASSEMBLY.
- UL LISTED AND AMCA SEAL. VERIFY VOLTAGE WITH ELECTRICAL PLANS.
- UNIT TO BE INTERLOCKED WITH RESTROOM LIGHTS.



3 HVAC FLOOR PLAN - RESTROOMS
 SCALE: 1/4" = 1'-0"

Project: Palmetto Burger King, 3765 Roosevelt Hwy., Palmetto, GA 30459
 Date: 10/30/2020 11:55:00 AM
 User: Robert Loia
 Plot: P-5
 Scale: 1/4" = 1'-0"
 Drawing: HVAC Floor Plan - Restrooms
 Author: Robert Loia
 Checker: Robert Loia
 Title: HVAC Floor Plan - Restrooms