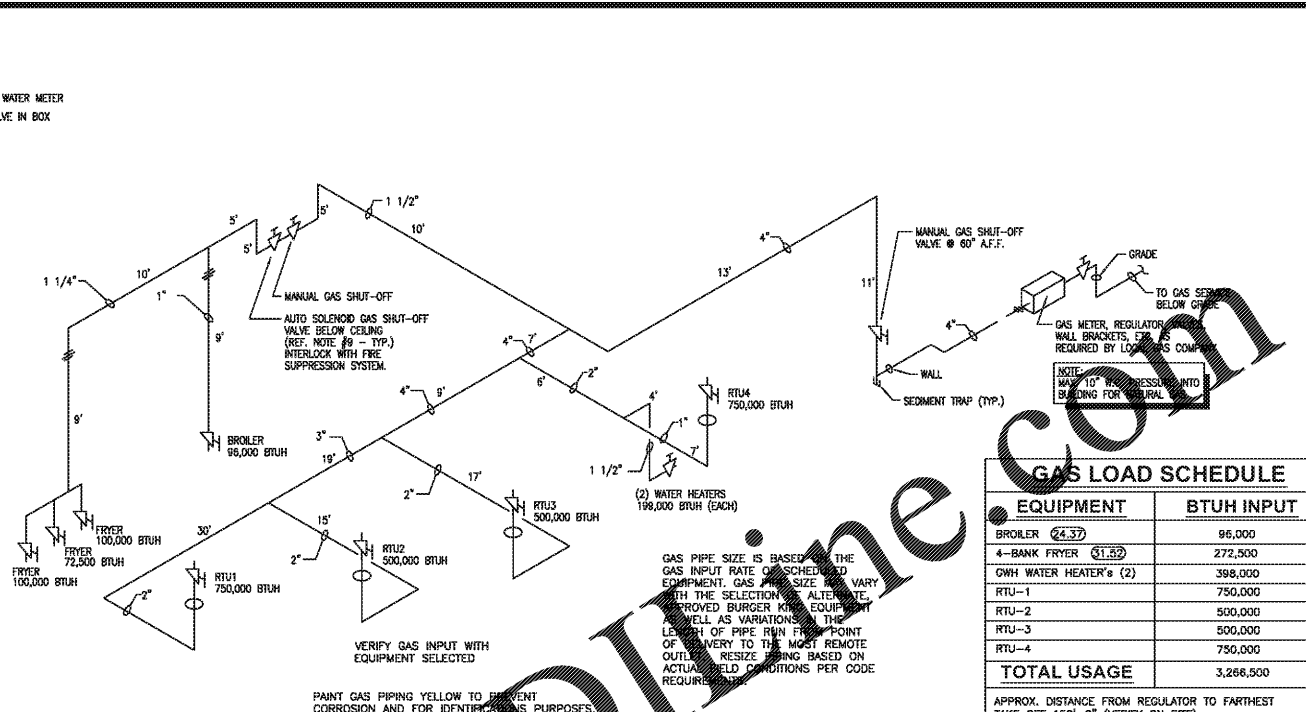


WATER SUPPLY RISER DIAGRAM
SCALE: NONE



GAS SUPPLY RISER DIAGRAM
SCALE: NONE
TOTAL LOAD = 1,188,000 BTUH
TOTAL LENGTH TO FURTHEST FLUENCE = 90'

GAS LOAD SCHEDULE

EQUIPMENT	BTUH INPUT
BROILER (24.37)	96,000
4-BANK FRYER (61.82)	272,500
6WH WATER HEATER'S (2)	398,000
RTU-1	750,000
RTU-2	500,000
RTU-3	500,000
RTU-4	750,000
TOTAL USAGE	3,266,500

APPROX. DISTANCE FROM REGULATOR TO FARTHEST TAKE OFF 150'-0" (VERIFY ON SITE)

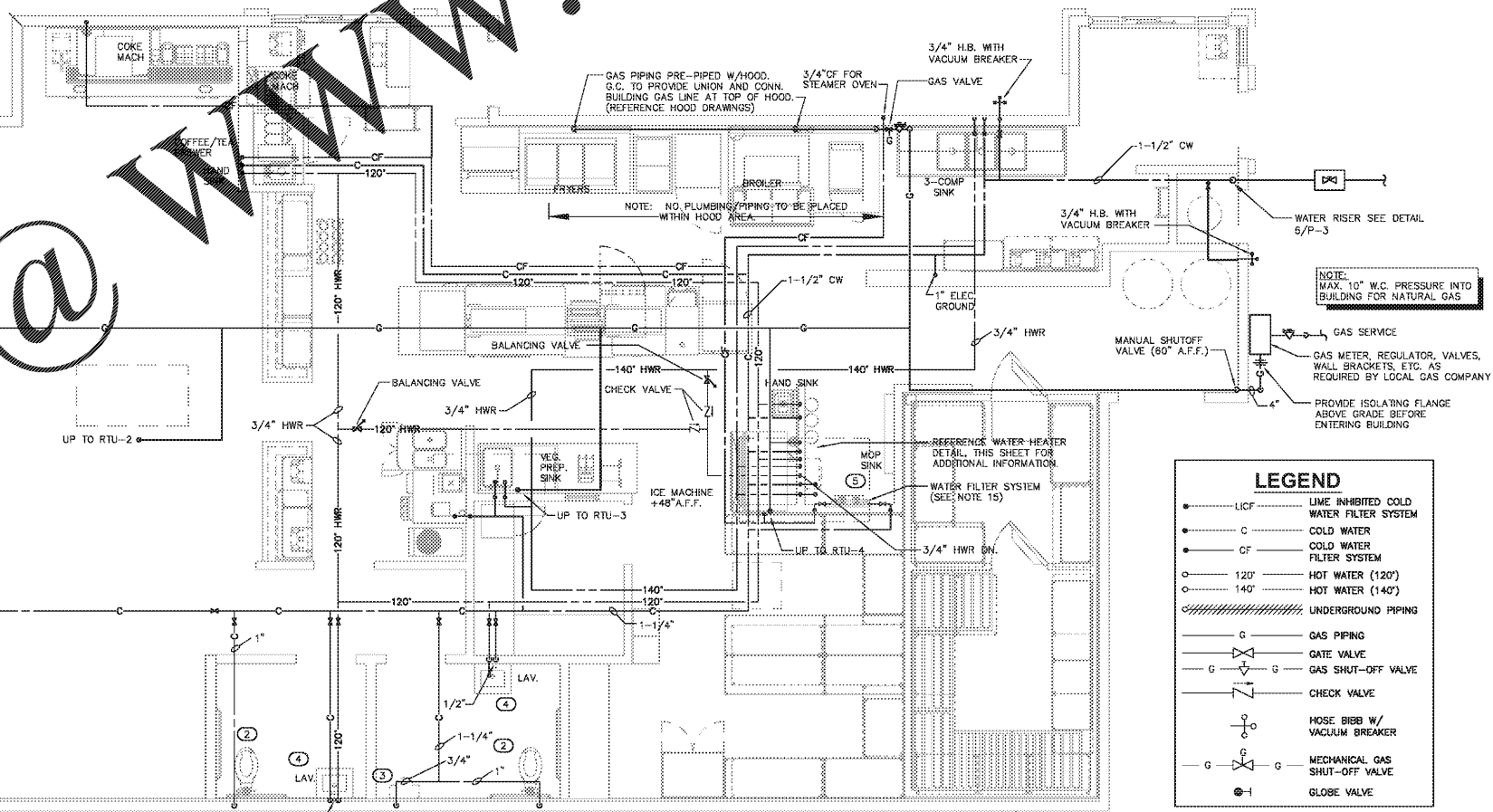
GAS TYPE: NATURAL GAS
DELIVERY PRESSURE: 7" W.C.

GAS LINE SIZING NOTE:
1. GAS LINES HAVE BEEN SIZED PER TABLE 402.4(2) OF THE 2012 INTERNATIONAL GAS CODE - FUEL GAS FOR PRESSURES LESS THAN 2 PSI, A PRESSURE DROP OF 0.5" WATER COLUMN AND 0.6 SPECIFIC GRAVITY.

- NOTES:**
- DO NOT SCALE DRAWINGS.
 - GENERAL CONTRACTOR AND PLUMBING CONTRACTOR SHALL VERIFY GAS REQUIREMENTS OF THIS PROJECT BEFORE BIDDING AND PROCEEDING WITH WORK. SEE SHEET M-1 FOR GAS REQUIREMENTS OF A/C UNITS.
 - ALL HOT AND COLD WATER PIPING LOCATED ABOVE CEILING AREAS BUT BELOW ROOF INSULATION SHALL BE INSULATED WITH 3/4" FIBERGLASS LOW PRESSURE TYPE WITH DUAL TEMPERATURE JACKET. NO HOT AND COLD WATER PIPING SHALL BE LOCATED OUTSIDE OF BUILDING INSULATION ENVELOPE. ALL UNDERGROUND PIPES LOCATED INSIDE BUILDING TO BE ENCASED IN FLEXIBLE POLYETHYLENE.
 - ALL WATER PIPING LOCATED IN EXTERIOR WALLS SHALL BE LOCATED ON THE CONDITIONED SIDE OF INSULATION FOR PROTECTION.
 - PROVIDE FROST PROOF HOSE BIBBS.
 - PROVIDE SEPARATE SHUT-OFF VALVES FOR ALL EQUIPMENT AND PLUMBING FIXTURES REQUIRING WATER CONNECTIONS.
 - PROVIDE COUPLINGS TO ALL EQUIPMENT AS REQUIRED.
 - PLUMBING CONTRACTOR TO FURNISH AND INSTALL U.L. LISTED MECHANICAL GAS SHUT-OFF VALVES FOR FIRE PROTECTION SYSTEMS. VALVES CAN BE OBTAINED FROM THE FIRE PROTECTION SYSTEM SUPPLIER.
 - PROVIDE CATEGORY III STAINLESS STEEL VENT AS SPECIFIED BY MANUFACTURER. LAST PORTION OF PIPE SHALL EXTEND A MINIMUM OF 36" ABOVE ROOF SURFACE.
 - PROVIDE BACKFLOW PREVENTER ON COFFEE MAKERS, ICE MACHINE AND OTHER WATER LINES AS REQUIRED BY LOCAL CODES.
 - PROVIDE WOOD BLOCKING AS REQUIRED FOR FIXTURES AND FINISHES (REFERENCE SHEET A-1)
 - CONTRACTOR TO PROVIDE 3/4" DIAMETER HOT AND COLD WATER LINES AT TRASH ENCLOSURE WITH MIXING VALVE AT CAN WASH SIDE BUILDING.
 - INSTANTANEOUS GAS WATER HEATER AS SPECIFIED ON SHEET B-1 NOT RECOMMENDED FOR USE IN EXTREMELY COLD CLIMATES (ZONE 6) DUE TO ITS INABILITY TO PRODUCE LARGE QUANTITIES OF HOT WATER OR MAINTAIN WATER TEMPERATURES IN EXCESS OF 130°F.
 - FILTERED WATER AT THE VEGETABLE PREP SINK IS OPTIONAL. UNFILTERED COLD WATER MAY BE USED IN ITS PLACE.
 - APPROVED WATER FILTER SYSTEMS:
 - EVERPURE MODEL #22032 OR SCIENTIFIC MODE #100300. NOTE: PROVIDE LINE INHIBITOR AS MAY BE REQUIRED.
 - PLUMBING CONTRACTOR TO PROVIDE AND INSTALL WATER FILTER FOR COFFEE DRINKS AT THE BALANCE BOX WALL. VERIFY FILTER REQUIREMENTS WITH COFFEE VENDOR.
 - CUTTING AND NOTCHING 2x4 BEARING WALL NOT TO EXCEED 7/8" BORED HOLES IN 2x4 BEARING WALLS NOT TO EXCEED 2-1/8" PE PIPING TO BE USED UNLESS NOT ALLOWED BY LOCAL CODES.
 - PLUMBING CONTRACTOR TO PROVIDE WATER FILTER FOR DRINK SYSTEM. COORDINATE REQUIREMENTS WITH THE EQUIPMENT SUPPLIER.

SITE UTILITY NOTE
PLUMBING CONTRACTOR SHALL COORDINATE THE LOCATION OF ALL PIPING FOR CONNECTION TO THE APPROPRIATE UTILITY AS SHOWN ON UTILITY PLAN. THIS CONTRACTOR SHALL MAKE FINAL CONNECTION TO THE RECEIVING UTILITY.

1 WATER AND GAS PLAN
SCALE: 1/4" = 1'-0"



LEGEND

- LICF — LIME INHIBITED COLD WATER FILTER SYSTEM
- C — COLD WATER
- CF — COLD WATER FILTER SYSTEM
- — 120° — HOT WATER (120°)
- — 140° — HOT WATER (140°)
- UNDERGROUND PIPING
- G — GAS PIPING
- G — GATE VALVE
- G — GAS SHUT-OFF VALVE
- Z — CHECK VALVE
- HOSE BIBB W/ VACUUM BREAKER
- G — MECHANICAL GAS SHUT-OFF VALVE
- — GLOBE VALVE

ROBERTSON LOIA ROOF ARCHITECTS & ENGINEERS
3460 Preston Ridge Road, Suite 275, Alpharetta, Georgia 30005
770-674-9600 Fax 678-919-0745
GALDCA #FE000562 Exp. 08/31/2022



PALMETTO BURGER KING
3765 ROOSEVELT HWY, PALMETTO, GA.
FOR: **JP DESIGN & CONSTRUCTION**
JACKSON, GA.

REVISIONS

NO.	DESCRIPTION

WATER & GAS PLAN AND RISERS

DATE: 10-30-20
PROJECT NUMBER: 20-197
SHEET NUMBER: P-2