

KEYED NOTES:

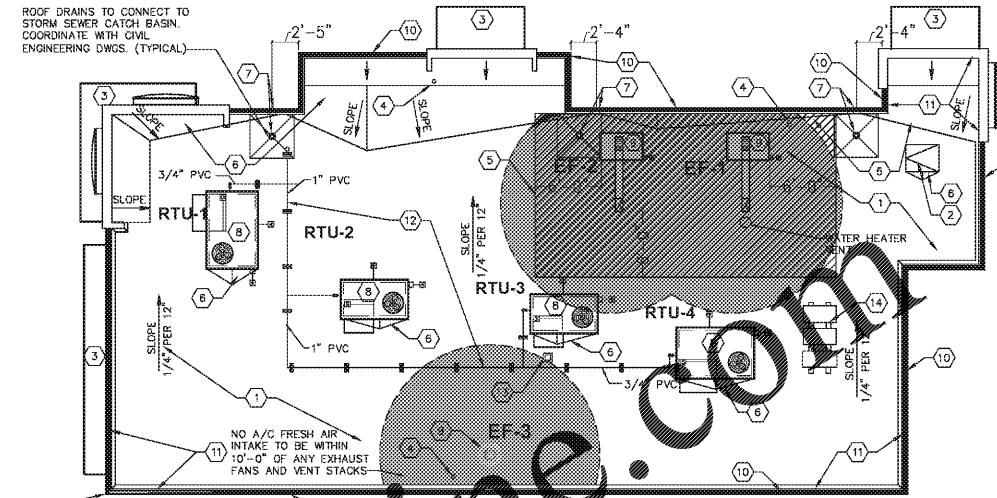
- TWO-PLY MODIFIED BITUMEN MEMBRANE W/GLASS FIBER REINFORCEMENT. BOTTOM PLY SHALL BE UNSURFACED, TOP PLY SHALL HAVE WHITE MINERAL SURFACE.
- ROOF ACCESS SCUTTLE, REFERENCE DETAIL, THIS SHEET.
- PREFABRICATED METAL CANOPY, REFERENCE SHEETS WALL SECTIONS.
- VENT THROUGH ROOF - PROVIDE PREFABRICATED DURO-LAST VENT FLASHING FOR ALL VENTS AND PIPE PENETRATIONS, REFERENCE DETAIL #7, THIS SHEET.
- INSTALL MODIFIED BITUMEN SACRIFICE SHEET AS SPECIFIED AT KITCHEN EXHAUST.
- ROOF CRICKET WITH SLOPE TO MATCH ROOF, REFER TO DETAIL #4, THIS SHEET.
- ROOF DRAIN AND OVERFLOW ROOF SCUPPERS - REFER TO DETAILS #5 AND #8 THIS SHEET.
- ROOF TOP AIR CONDITIONING UNIT - REFER TO MECHANICAL PLANS.
- EXHAUST FAN - REFER TO MECHANICAL PLANS.
- ILLUMINATED PARAPET LIGHT BAND.
- METAL CORNING.
- PVC CONDENSATE DRAIN (SIZE AS SHOWN) WITH PIPE SUPPORTS EVERY 5'-0", TERMINATE CONDENSATE DRAIN AT PRIMARY SCUPPER. REFER TO DETAIL #10, THIS SHEET FOR ADDITIONAL INFORMATION.
- PROVIDE PITCH PAN WITH CONDUIT OVER OFFICE FOR SATELLITE DISH/ANTENNA.
- EQUIPMENT STAND FOR WALK-IN BOX COOLER/FREEZER CONDENSERS AND ICE MACHINE CONDENSER. REFER TO EQUIPMENT STAND DETAIL, THIS SHEET.

GENERAL ROOFING NOTES:

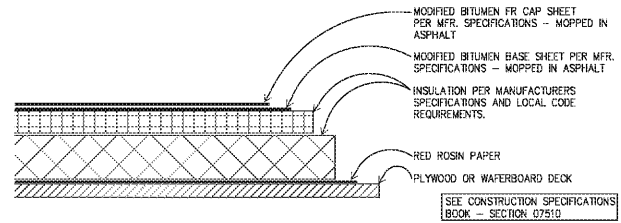
- ROOFING SUBCONTRACTOR TO COORDINATE LOCATION OF H.V.A.C. UNITS AND ROOF TOP ACCESSORIES WITH STRUCTURAL, MECHANICAL AND ELECTRICAL DRAWINGS FOR PLACEMENT AND TAPERED RIGID INSULATION BOARD LAY-OUT AND SUBSEQUENT INSTALLATION IN ORDER TO AVOID PONDING WATER CONDITIONS ATTRIBUTABLE TO BOARD LAY-OUT ISSUES.
- ROOF SYSTEMS SPECIFIED SHALL BE APPLIED ONLY BY MANUFACTURER APPROVED APPLICATION IN ORDER TO MEET GUARANTEE REQUIREMENTS.
- COORDINATE LOCATION OF MECHANICAL UNITS WITH STRUCTURAL AND MECHANICAL DRAWINGS.
- HVAC CONDENSATE LINES TO TERMINATE AT ROOF DRAIN OR AS REQUIRED BY LOCAL CODE.
- REFER TO STRUCTURAL AND M-E-P DRAWINGS FOR ADDITIONAL INFORMATION.
- ALL CURBS AND PIPE PENETRATIONS SHALL HAVE A MINIMUM OF 16" CLEAR FROM EACH OTHER FOR ROOF FLASHING PURPOSES. ALL EQUIPMENT SHALL HAVE A MINIMUM OF 16" CLEAR FROM ALL ADJACENT PARAPETS. ALL HVAC MOUNTED EQUIPMENT (DISCONNECT BOXES, GFCI, PIPE SUPPORTS) SHALL NOT BE CLOSER THAN 16" FROM EACH OTHER OR CURB. NO UNISTRUT PIPE SUPPORTS SHALL BE USED AS VERTICAL MEMBERS FOR MOUNTING EQUIPMENT TO ROOF SURFACE.
- PONDING WATER IS DEFINED AS WATER THAT DOES NOT DRAIN OR DISAPPEAR FROM THE ROOF WITHIN 48 HOURS AFTER PRECIPITATION.
- CONTRACTOR SHALL "SUGAR-IN" ALL ASPHALT. BLEED-OUT ON PILES WITH ADDITIONAL GRANULES TO MATCH EXISTING COLORATION OF THE MINERAL SURFACE CAP SHEET.
- ALL FLASHING CEMENTS, ASPHALTS, PRODUCTS AND ACCESSORIES SHALL BE APPROVED BY ROOFING MANUFACTURER WITH THE MANUFACTURER'S BRAND. ALL ASPHALTS SHALL BE AMERICAN MANUFACTURED PRODUCTS.

GENERAL NOTES:

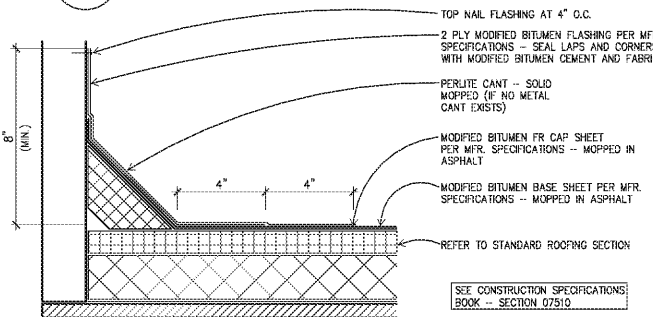
- THE ROOF STRUCTURE SHALL NOT BE USED FOR STOCKING OF EQUIPMENT OR MATERIALS UNLESS APPROVED BY THE ARCHITECT, STRUCTURAL ENGINEER AND THE JOIST MANUFACTURER.
- THE ROOFING SYSTEM SHALL BE AS PER DRAWINGS AND PER MANUFACTURER'S SPECIFICATIONS.
- COORDINATE ROOF ELEVATIONS WITH STRUCTURAL DRAWINGS. REFER TO SPECIFICATION SHEET FOR ROOF RELATED ITEMS, INCLUDING GUARANTEES, CURBS, FLASHING, ETC.



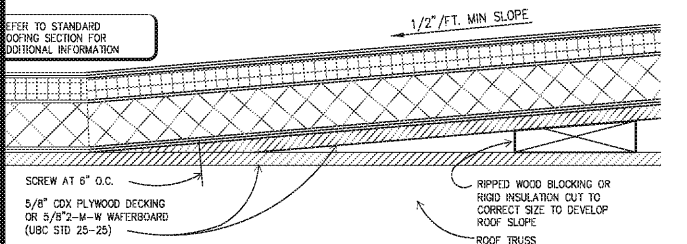
1 ROOF PLAN
A1.3 SCALE: 1/4" = 1'-0"



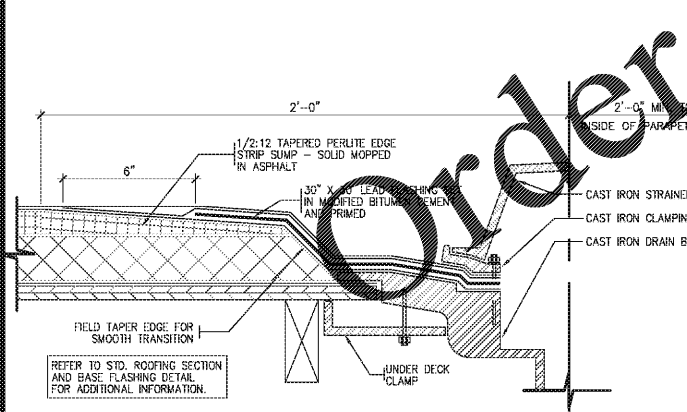
2 STANDARD ROOFING SECTION
A1.3 SCALE: 3" = 1'-0"



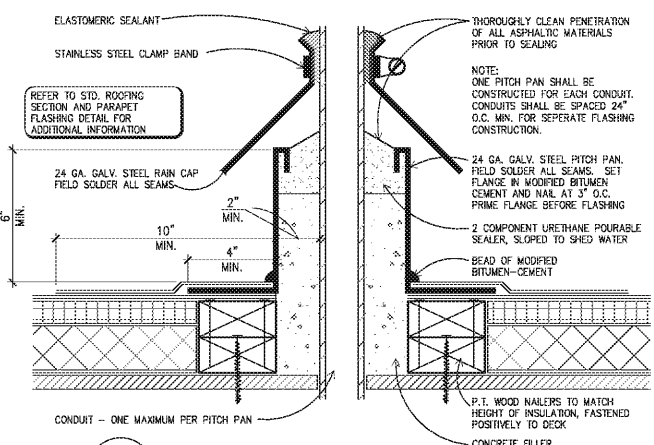
3 STANDARD BASE FLASHING CONFIGURATION
A1.3 SCALE: 3" = 1'-0"



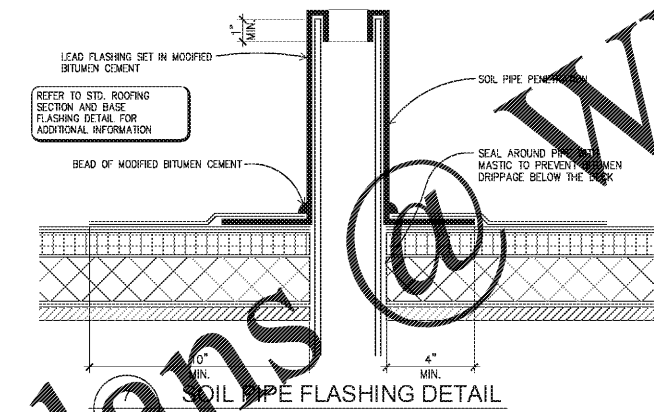
4 TYPICAL CRICKET DETAIL
A1.3 SCALE: 3" = 1'-0"



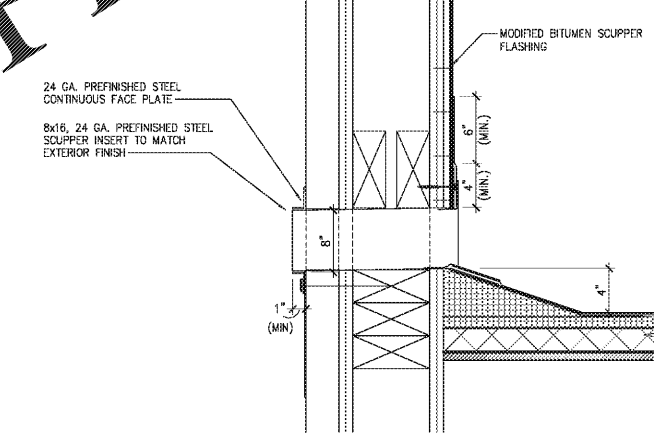
5 ROOF DRAIN DETAIL
A1.3 SCALE: 3" = 1'-0"



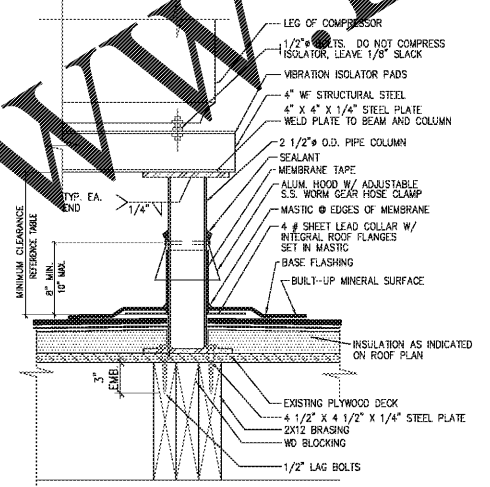
6 PITCH PAN DETAIL
A1.3 SCALE: 3" = 1'-0"



7 SOIL PIPE FLASHING DETAIL
A1.3 SCALE: 3" = 1'-0"



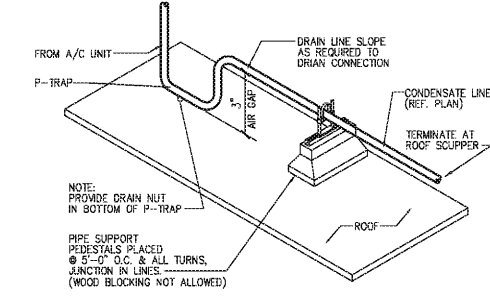
8 OVERFLOW SCUPPER DETAIL
A1.3 SCALE: 3" = 1'-0"



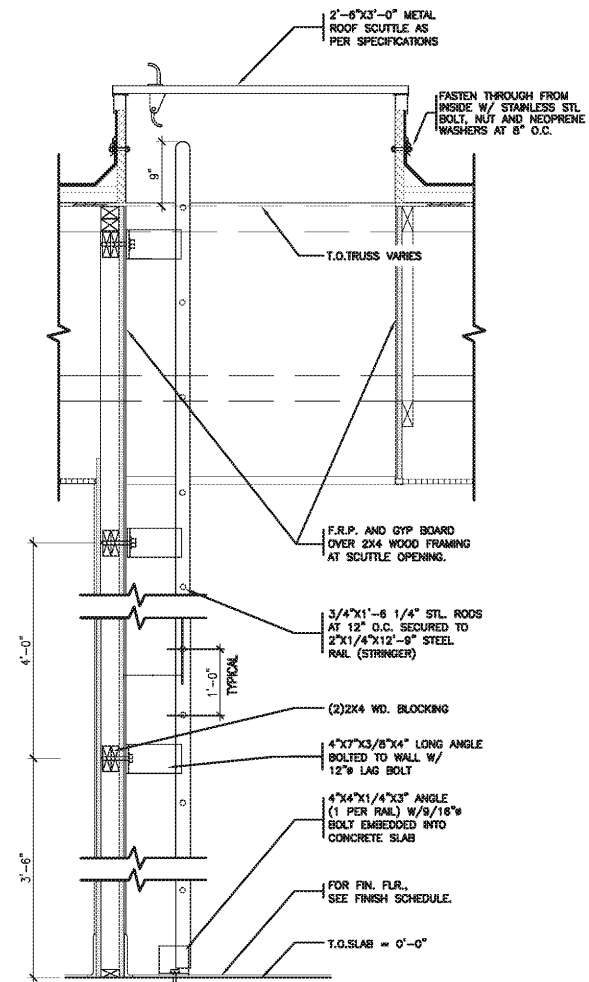
9 EQUIPMENT STAND DETAIL
A1.3 SCALE: 3" = 1'-0"

VERIFY W/ EQUIPMENT SUPPLIER IF IN CONTRACT.

WIDTH OF UNIT	MINIMUM CLEARANCE ABOVE ROOF SURFACE (INCHES)
< 24	14
24 < 36	16
36 < 48	24
48 < 60	30
> 60	48



10 CONDENSATE LINE SUPPORT DETAIL
A1.3 SCALE: N.T.S.



11 ROOF SCUTTLE DETAIL
A1.3 SCALE: 3/4" = 1'-0"

C:\pwworking\LDIline.com\Projects\2019\20190722\20190722_TITL\BIB\DWG_Vent_Fan\20190722_vent_fan.dwg, User: fhaselb, View: fhaselb, Plot: fhaselb, Date: 10/30/20

Order Plans @ WWW.LDIline.com

ROBERTSON LOIA ROOF ARCHITECTS & ENGINEERS
 3460 Preston Ridge Road, Suite 275, Alpharetta, Georgia 30005
 770-674-2600, Fax 678-319-0745

STATE OF GEORGIA
 CHRISTIAN J. CASTIN
 CERTIFICATE NO. 28888
 REGISTERED ARCHITECT

PALMETTO BURGER KING
 3765 ROOSEVELT HWY, PALMETTO, GA.
 FOR: **JP DESIGN & CONSTRUCTION**
 JACKSON, GA.

REVISIONS

ROOF PLAN & DETAILS

DATE: 10-30-20
 PROJECT NUMBER: 20-197
 SHEET NUMBER: **A1.3**