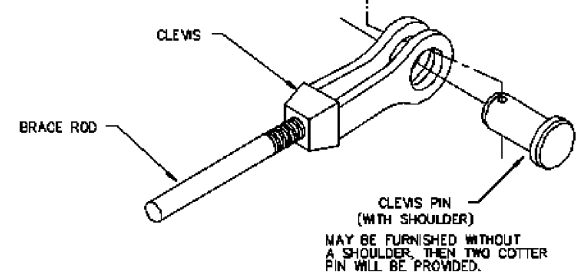


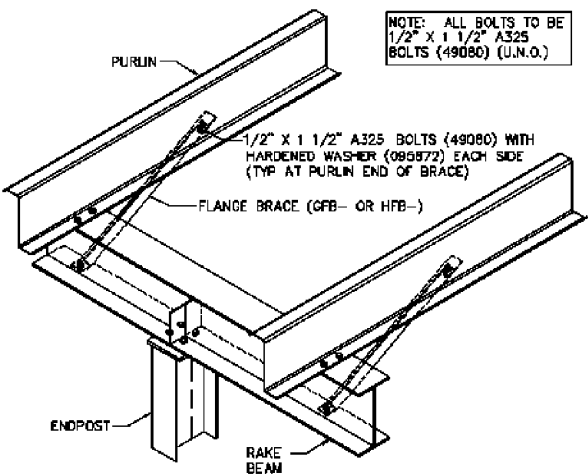
DESCRIPTION/PART NO				
ROD DIA.	NUT	HARD STEEL ROUND WASHER A	HARD STEEL WASHER B	HILLSIDE WASHER
3/8"	35329	3/8" FLAT WASHER (89405)	1/2" BEVEL SQUARE WASHER (46040)	543334
1/2"	85230	1/2" FLAT WASHER (89572)	3/4" FLAT ROUND WASHER (89848)	543335
5/8"	85233	5/8" FLAT WASHER (89545)	1" FLAT ROUND WASHER (89848)	543336
3/4"	85235	3/4" FLAT WASHER (89546)	1 1/8" FLAT ROUND WASHER (89848)	543337
7/8"	85237	7/8" FLAT WASHER (89547)	1 1/2" FLAT ROUND WASHER (89848)	543338
1"	85238	1" FLAT WASHER (89548)		
1 1/8"	85239	1 1/8" FLAT WASHER (89549)		

REV. DATE: 06/20/17 REV. NO. 01
 BR01G2 ROD BRACE WEB SLOT ASSEMBLY

ROD DIA.	CLEWS MARK NO.	CLEWS PIN DIA.
3/8"	097572	1 1/4"
1/2"	097573	
5/8"	098277	
3/4"	095278	
7/8"	095279	
1"	095280	
1 1/8"	095281	
1 1/4"	095282	
1 3/8"	097583	
1 1/2"	097584	1 1/2"



REV. DATE: 06/20/17 REV. NO. 00
 BR02K1 ROD BRACING CLEWS ASSEMBLY



REV. DATE: 01/24/18 REV. NO. 01
 BR25CA ENDPOST TOP BETWEEN PURLINS NO CAP CHANNEL - BRACED TO PURLINS ONLY

F = FEET G = GAGE
 I = INCHES O = OPERATION
 E = EIGHTHS C = FIN/COLOR

CK*** = COLUMN (PLATE)
 CGX*** = COLUMN (GAGE)
 WCX*** = COLUMN (HOTROLL)

RBX*** = RAFTER (PLATE)
 BCX*** = RAFTER (GAGE)
 WRX*** = RAFTER (HOTROLL)
 TRX*** = TRUSS RAFTER

ICX*** = INTERIOR COLUMN
 PCX*** = PIPE COLUMN
 TCX*** = TUBE COLUMN

EPX*** = ENDOPOST (PLATE)
 EGX*** = ENDOPOST (GAGE)

CBX*** = CANOPY (PLATE)
 CBX*** = PIGGYBACK CANOPY

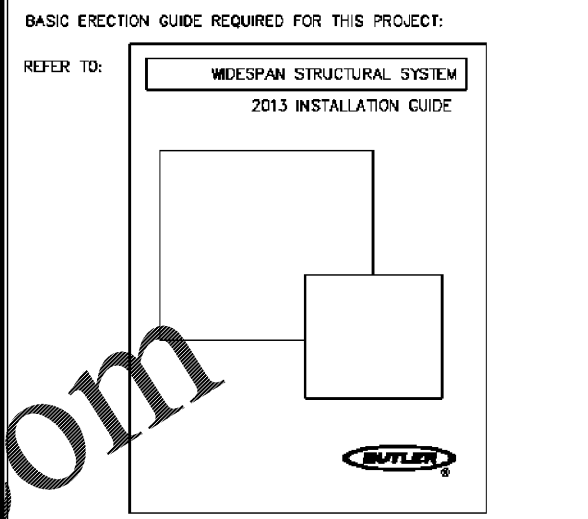
DCX*** = 8 1/2" GAGE POST
 DCE*** = 10" GAGE POST

RS = THREADS BOTH ENDS
 RT = THREADS ONE END - CLEWS ONE END
 RU = CLEWS BOTH ENDS
 RP = THREAD BOTH ENDS - NO HILLSIDES

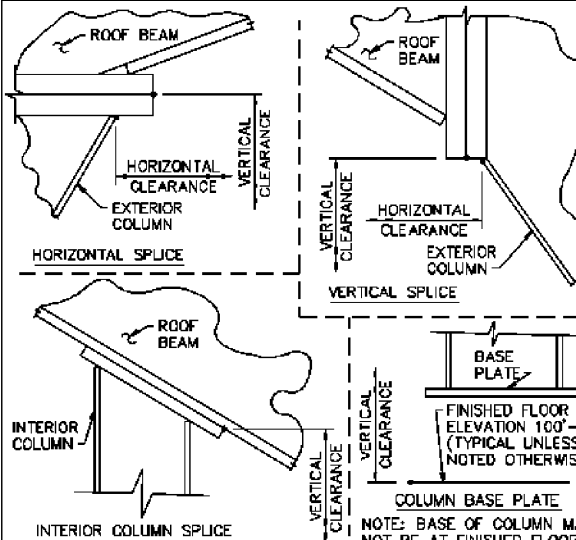
ROD BRACING
 0 3 R S 2 5 1 0
 I E * * F F I I
 DIA LENGTH

MARK NUMBER
 COMMON GENERATED MARK NUMBERS

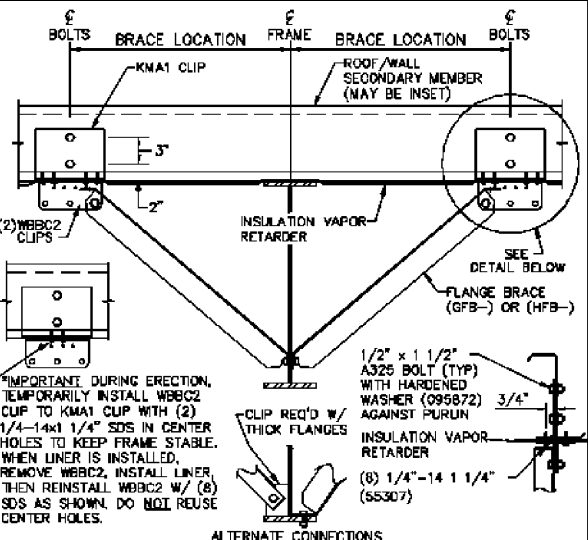
REV. DATE: 06/20/17 REV. NO. 01
 EN50B1



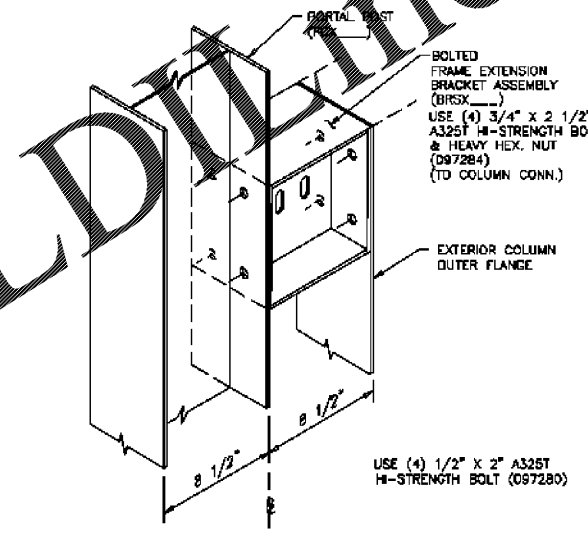
REV. DATE: 01/26/14 REV. NO. 00
 ENB002 BASIC ERECTION GUIDE - STRUCTURAL



REV. DATE: 06/27/10 REV. NO. 00
 PFR007 CLEAR HEIGHT DIMENSION WORK POINTS AS SHOWN ON FRAME CROSS SECTION DRAWINGS

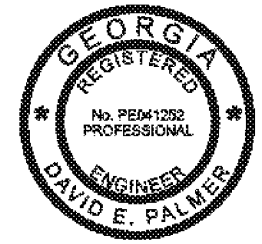


REV. DATE: 06/24/17 REV. NO. 00
 BR06K3 ROOF/WALL FLANGE BRACING PURLIN/GRT WITH INSULATION VAPOR RETARDER



REV. DATE: 01/21/18 REV. NO. 00
 RR20B PORTAL POST TO BRACKET CONNECTION WITH BRACKET BOLTED TO COLUMN

Order Plans @ WWW.LDOnline.com



06/09/2020

PERMIT SET- For Building Dept. Approval

1. USE 1/2 X 1 1/2 A325T BOLT (49080) AND NUT (47120) W/O WASHERS. SNUG TIGHTEN BOLTS FOR ALL SECONDARY CONNECTIONS, SECONDARY CLIP CONNECTIONS, AND FLANGE BRACE CONNECTIONS, UNLESS NOTED OTHERWISE.
 2. SLOT REINFORCEMENT PLATES NEED NOT BE LOCATED ON THE SAME SIDE OF THE WEB AS THE HILLSIDE WASHER.

THE BUTLER MFG. ENGINEER'S SEAL APPLIES ONLY TO THE WORK PRODUCT OF BUTLER MFG. AND DESIGN AND PERFORMANCE REQUIREMENTS SPECIFIED BY BUTLER. THE BUTLER MFG. ENGINEER'S SEAL DOES NOT APPLY TO THE PERFORMANCE OR DESIGN OF ANY OTHER PRODUCT OR COMPONENT FURNISHED BY BUTLER EXCEPT TO ANY DESIGN OR PERFORMANCE REQUIREMENTS SPECIFIED BY BUTLER.

THIS DRAWING, INCLUDING THE INFORMATION HEREON, REMAINS THE PROPERTY OF BUTLER MFG. IT IS PROVIDED SOLELY FOR ERECTING THE BUILDING DESCRIBED IN THE APPLICABLE PURCHASE ORDER AND MAY BE REPRODUCED ONLY FOR THAT PURPOSE. IT SHALL NOT BE MODIFIED, REPRODUCED OR USED FOR ANY OTHER PURPOSE WITHOUT PRIOR WRITTEN APPROVAL OF BUTLER MFG.

THE GENERAL CONTRACTOR AND/OR ERECTOR IS SOLELY RESPONSIBLE FOR ACCURATE GOOD QUALITY WORKMANSHIP IN ERECTING THIS BUILDING IN ACCORDANCE WITH THIS DRAWING. DETAILS REFERENCED IN THIS DRAWING, ALL APPLICABLE BUTLER MFG. ERECTION GUIDES, AND INDUSTRY STANDARDS PERTAINING TO PROPER ERECTION, INCLUDING THE CORRECT USE OF TEMPORARY BRACING.

B BUTLER MANUFACTURING 1540 GENESSEE ST. KANSAS CITY, MO 64102			
REV.	DATE	BY	DESCRIPTION

DRAWING SCALE: NTS

PRIMARY BRACING SED'S	
BUILDER	O'Reilly Automotive Stores, Inc.
CUSTOMER	O'Reilly Automotive Stores, Inc.
LOCATION	Varnell, Georgia
PROJECT	Varnell, GA (VNL)
BUILDERS POW	VNL

 Butler Manufacturing VPC VERSION: 2020.2	JOB # 20-010380-01 DATE: 06/05/2020 DRAWN BY: JLI / SW PAGE: 11
-------------------------------------------------	--------------------------------------------------------------------------