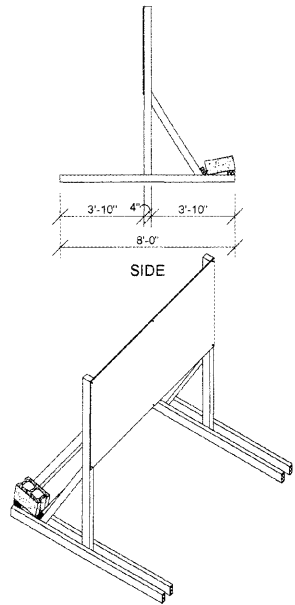
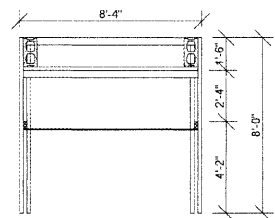


FRONT

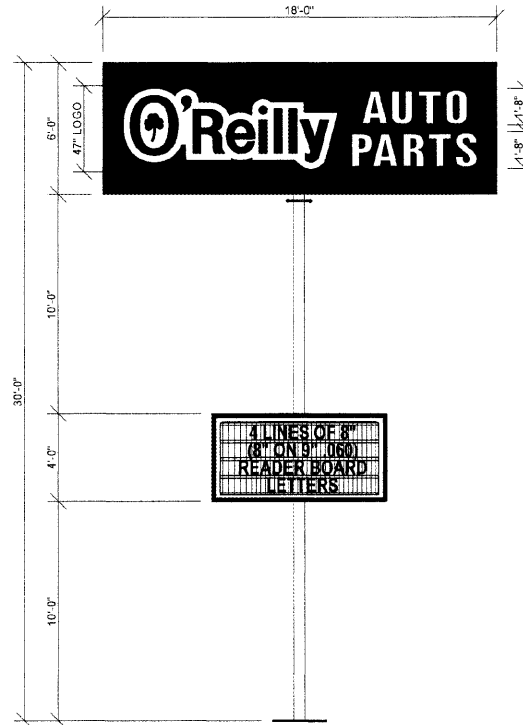


SIDE

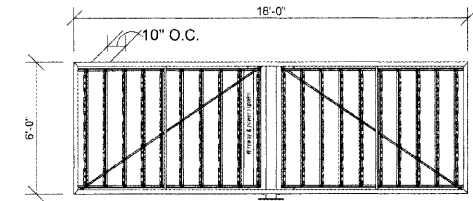


TOP

**1** COMING SOON TEMPORARY CONSTRUCTION SIGN  
SG1.2 SCALE: 1/4" = 1'-0"

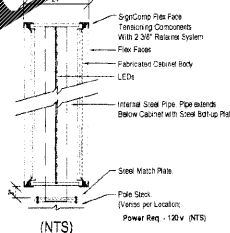


**2** GROUND SIGN ELEVATION  
SG1.2 SCALE: 1/4" = 1'-0"



POLE SIGN PART# 6-18 SIGN CABINET-PE-DF  
SCALE: 1/4" = 1'-0" 108.00 SQ FT

- (A) 14-1/2" deep extruded cabinet with support structure and 2 1/4" retainers
- (B) Internal steel pipe with external steel bolt-up plate(s)
- (C) GE Tetra PowerStrip DS White LED's, Part #GEWNDSPP8 (7109Q) 6 LED's per module (3 LED's per side) on GE-Tetra Mounting Rails, Part #GEDSRLR Rails on 10" centers, 100 total modules.
- (D) GE-Tetra Power Supplies, Part #GEPS24-180U 24 Volt 90-300VAC 50/60 HZ Load capacity: 16 modules per power supply, Total of four (4) per display
- (E) Fabricated aluminum internal power supply wireway.
- (F) Faces are Paneflex/Digital print. Face graphics to match PMS 200c Red, PMS 342c Green, Black and White.
- (G) 24" deep fabricated cabinet with SignComp flex face tensioning components and 2 3/8" retainers. Internal steel pipe with external steel bolt-up plate(s). Vertical GE (GEWNDSPP8) White DS LED Modules. Paint color: Gloss Black. Internal pipe/cabinet exposure calculation: C80
- (H) Cabinet to be installed with bolt-up plate(s). Paint to: Gloss Black



(NTS)

**GENERAL NOTES**

- (A) REFER TO PROJECT MANUAL FOR ADDITIONAL REQUIREMENTS.
- (B) CONTACT OWNER'S OR TENANT'S DESIGNATED PROJECT ADMINISTRATOR FOR QUESTIONS OR CLARIFICATIONS.
- (C) PERMANENT SIGNAGE OWNER FURNISHED AND INSTALLED. (REFER TO SCOPE OF WORK SCHEDULE). SIGNAGE GRAPHICS PROVIDED FOR REFERENCE ONLY (N.I.C.) AND CONTRACTOR'S COORDINATION WITH SPECIFIC PROJECT CONSTRUCTION CONDITIONS.
- (D) SITE SIGN ROUGH-IN ELECTRICAL TO BE PROVIDED BY CONTRACTOR.
- (E) REQUIRED GOVERNMENTAL PERMITS FOR PERMANENT TYPE SIGNAGE TO BE PROVIDED BY SIGN COMPANY PER OWNER'S DIRECTION (N.I.C.).
- (F) "COMING SOON" TEMPORARY CONSTRUCTION SIGN TO BE PROVIDED BY GENERAL CONTRACTOR. APPLIED SIGNAGE GRAPHICS TO BE OWNER FURNISHED AND GENERAL CONTRACTOR INSTALLED. LOCATE TEMPORARY CONSTRUCTION SIGN ON SITE SO AS TO BE VISIBLE TO PUBLIC FROM RIGHT-OF-WAY.
- (G) UNLESS OTHERWISE INDICATED, SITE POLE SIGN FOUNDATION CONSTRUCTION BY SIGN CONTRACTOR (BY OTHERS - NOT IN CONTRACT) AND SITE MONUMENT SIGN FOUNDATION CONSTRUCTION BY GENERAL CONTRACTOR (BASE BID).

SPECIAL NOTE  
SIGN DESIGN BY OTHERS. REFER TO SIGN CONTRACTOR'S SHOP DRAWINGS FOR ADDITIONAL REQUIREMENTS.

NOTE:  
REFER TO SHEET S1.2 FOR SIGN FOUNDATION SYSTEM STRUCTURAL REQUIREMENTS.

Order Plans @ [www.LDILine.com](http://www.LDILine.com)

DESIGN BY OTHERS. FOR REFERENCE ONLY

**CRAIG A. SCHNEIDER, AIA**  
ARCHITECT  
1736 East Sunshine, Suite 417  
Springfield, Missouri 65804  
e-mail: [architect@estierischneider.com](mailto:architect@estierischneider.com)  
417.862.0558  
Fax: 417.862.3265

PROJECT:  
**NEW O'REILLY AUTO PARTS STORE**  
**CLEVELAND HIGHWAY**  
**VARNELL, GA**  
**SITE SIGNAGE DETAILS**

**O'Reilly AUTO PARTS**  
CORPORATE OFFICES  
233 SOUTH PATTERSON  
SPRINGFIELD, MISSOURI 65802  
(417) 862-2674 TELEPHONE

COMM #	4420
DATE:	2-28-2020
REVISION	
DATE:	