

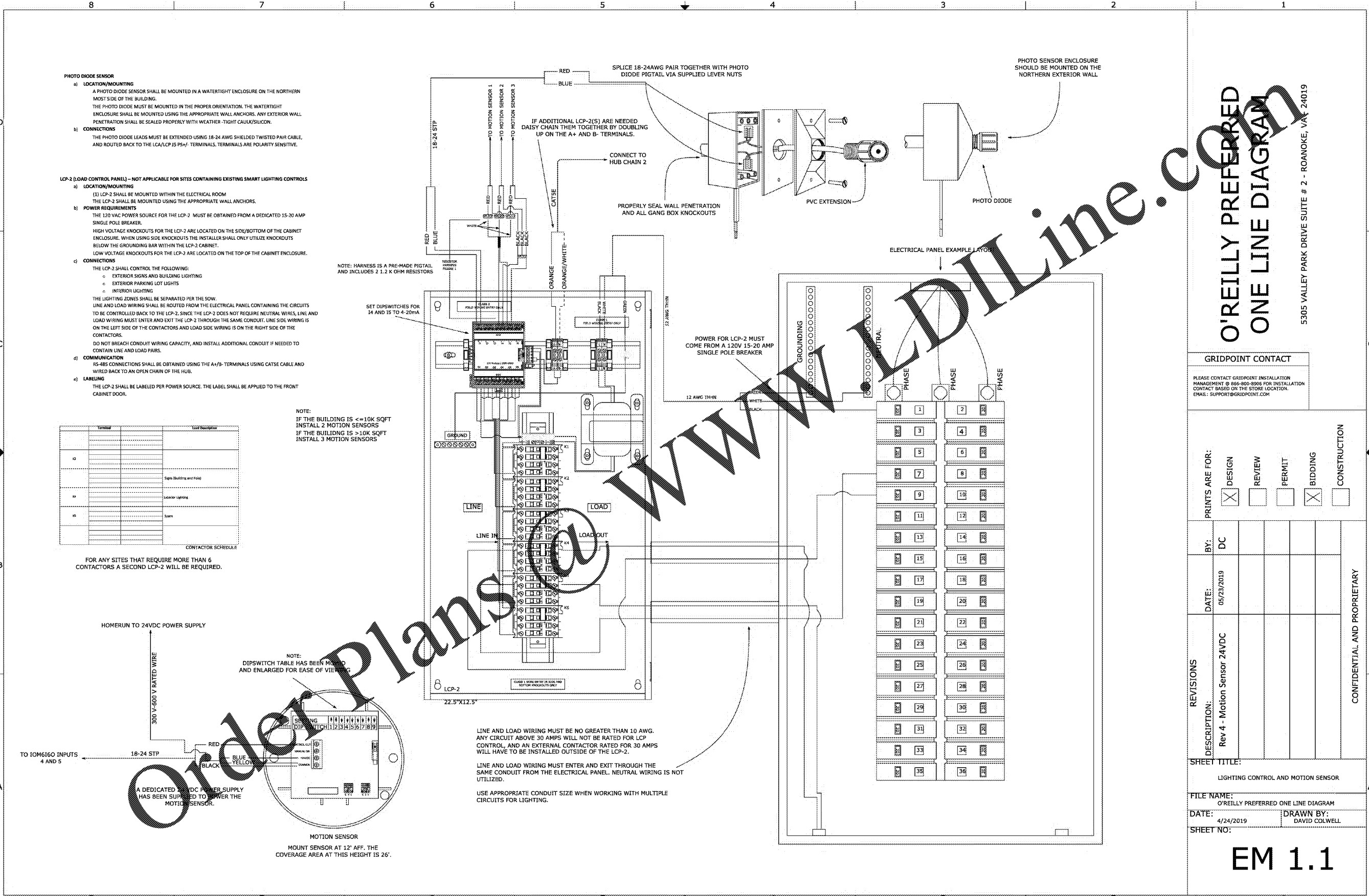


CRAIG A. SCHNEIDER, AIA
ARCHITECT
 1736 East Sunshine, Suite 417
 Springfield, Missouri 65804
 e-mail: architect@estetjstschneider.com
 417.862.0558
 Fax: 417.862.3265

PROJECT:
NEW O'REILLY AUTO PARTS STORE
CLEVELAND HIGHWAY
VARNELL, GA
GRIDPOINT EMS

O'Reilly AUTO PARTS
 CORPORATE OFFICES
 233 SOUTH PATTERSON
 SPRINGFIELD, MISSOURI 65802
 (417) 862-2674 TELEPHONE

COMM # 4420
 DATE: 02-28-2020
 REVISION
 DATE:

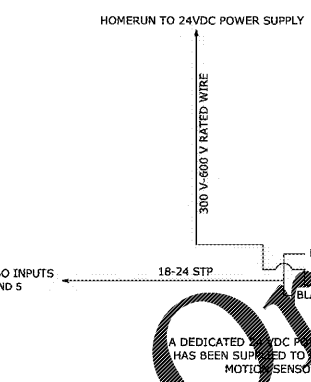


- PHOTO DIODE SENSOR**
- LOCATION/MOUNTING**
 A PHOTO DIODE SENSOR SHALL BE MOUNTED IN A WATERTIGHT ENCLOSURE ON THE NORTHERN MOST SIDE OF THE BUILDING. THE PHOTO DIODE MUST BE MOUNTED IN THE PROPER ORIENTATION. THE WATERTIGHT ENCLOSURE SHALL BE MOUNTED USING THE APPROPRIATE WALL ANCHORS. ANY EXTERIOR WALL PENETRATION SHALL BE SEALED PROPERLY WITH WEATHER-TIGHT CAULK/SILICON.
 - CONNECTIONS**
 THE PHOTO DIODE LEADS MUST BE EXTENDED USING 18-24 AWG SHIELDED TWISTED PAIR CABLE, AND ROUTED BACK TO THE LCA/LCP JS P5-V. TERMINALS ARE POLARITY SENSITIVE.
- LCP-2 (LOAD CONTROL PANEL) - NOT APPLICABLE FOR SITES CONTAINING EXISTING SMART LIGHTING CONTROLS**
- LOCATION/MOUNTING**
 (1) LCP-2 SHALL BE MOUNTED WITHIN THE ELECTRICAL ROOM. THE LCP-2 SHALL BE MOUNTED USING THE APPROPRIATE WALL ANCHORS.
 - POWER REQUIREMENTS**
 THE 120 VAC POWER SOURCE FOR THE LCP-2 MUST BE OBTAINED FROM A DEDICATED 15-20 AMP SINGLE POLE BREAKER. HIGH VOLTAGE KNOCKOUTS FOR THE LCP-2 ARE LOCATED ON THE SIDE/BOTTOM OF THE CABINET ENCLOSURE. WHEN USING SIDE KNOCKOUTS THE INSTALLER SHALL ONLY UTILIZE KNOCKOUTS BELOW THE GROUNDING BAR WITHIN THE LCP-2 CABINET. LOW VOLTAGE KNOCKOUTS FOR THE LCP-2 ARE LOCATED ON THE TOP OF THE CABINET ENCLOSURE.
 - CONNECTIONS**
 THE LCP-2 SHALL CONTROL THE FOLLOWING:
 EXTERIOR SIGNS AND BUILDING LIGHTING
 EXTERIOR PARKING LOT LIGHTS
 INTERIOR LIGHTING
 THE LIGHTING ZONES SHALL BE SEPARATED PER THE SOW. LINE AND LOAD WIRING SHALL BE ROUTED FROM THE ELECTRICAL PANEL CONTAINING THE CIRCUITS TO BE CONTROLLED BACK TO THE LCP-2. SINCE THE LCP-2 DOES NOT REQUIRE NEUTRAL WIRES, LINE AND LOAD WIRING MUST ENTER AND EXIT THE LCP-2 THROUGH THE SAME CONDUIT. LINE SIDE WIRING IS ON THE LEFT SIDE OF THE CONTACTORS AND LOAD SIDE WIRING IS ON THE RIGHT SIDE OF THE CONTACTORS. DO NOT BREACH CONDUIT WIRING CAPACITY, AND INSTALL ADDITIONAL CONDUIT IF NEEDED TO CONTAIN LINE AND LOAD PAIRS.
 - COMMUNICATION**
 IS-485 CONNECTIONS SHALL BE OBTAINED USING THE A+/B- TERMINALS USING CAT5 CABLE AND WIRED BACK TO AN OPEN CHAIN OF THE HUB.
 - LABELING**
 THE LCP-2 SHALL BE LABELED PER POWER SOURCE. THE LABEL SHALL BE APPLIED TO THE FRONT CABINET DOOR.

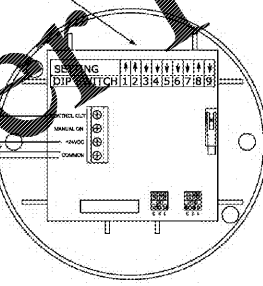
Terminal	Local Description
1	
2	
3	Signs (Building and Pole)
4	Exterior Lighting
5	Signs

CONTACTOR SCHEDULE

FOR ANY SITES THAT REQUIRE MORE THAN 6 CONTACTORS A SECOND LCP-2 WILL BE REQUIRED.



NOTE:
 DIPSWITCH TABLE HAS BEEN MINIFIED AND ENLARGED FOR EASE OF VIEWING



MOTION SENSOR
 MOUNT SENSOR AT 12' AFF. THE COVERAGE AREA AT THIS HEIGHT IS 26'.

NOTE: HARNESS IS A PRE-MADE PIGTAIL AND INCLUDES 2 1.2 K OHM RESISTORS

SET DIPSWITCHES FOR 14 AND 15 TO 4-20mA

LINE AND LOAD WIRING MUST BE NO GREATER THAN 10 AWG. ANY CIRCUIT ABOVE 30 AMPS WILL NOT BE RATED FOR LCP CONTROL, AND AN EXTERNAL CONTACTOR RATED FOR 30 AMPS WILL HAVE TO BE INSTALLED OUTSIDE OF THE LCP-2.

LINE AND LOAD WIRING MUST ENTER AND EXIT THROUGH THE SAME CONDUIT FROM THE ELECTRICAL PANEL. NEUTRAL WIRING IS NOT UTILIZED.

USE APPROPRIATE CONDUIT SIZE WHEN WORKING WITH MULTIPLE CIRCUITS FOR LIGHTING.

O'REILLY PREFERRED ONE LINE DIAGRAM

5305 VALLEY PARK DRIVE SUITE # 2 - ROANOKE, VA 24019

GRIDPOINT CONTACT
 PLEASE CONTACT GRIDPOINT INSTALLATION MANAGEMENT @ 866-800-8906 FOR INSTALLATION CONTACT BASED ON THE STORE LOCATION. EMAIL: SUPPORT@GRIDPOINT.COM

PRINTS ARE FOR:

<input checked="" type="checkbox"/> DESIGN	<input type="checkbox"/> REVIEW	<input type="checkbox"/> PERMIT	<input checked="" type="checkbox"/> BIDDING	<input type="checkbox"/> CONSTRUCTION
--	---------------------------------	---------------------------------	---	---------------------------------------

REVISIONS

DESCRIPTION	DATE	BY
Rev 4 - Motion Sensor 24VDC	05/23/2019	DC

REVISIONS

CONFIDENTIAL AND PROPRIETARY

SHEET TITLE:
 LIGHTING CONTROL AND MOTION SENSOR

FILE NAME:
 O'REILLY PREFERRED ONE LINE DIAGRAM

DATE:
 4/24/2019

DRAWN BY:
 DAVID COLWELL

SHEET NO:
 EM 1.1

EM 1.1

www.LDOnline.com