

**CRIG A. SCHNEIDER, AIA**  
**ARCHITECT**  
 1736 East Sandhite, Suite 417  
 Springfield, Missouri 65804  
 417.862.8558  
 417.862.3265  
 Fax: 417.862.3265  
 e-mail: architect@ctfdesign.net

**PROJECT:**  
**NEW O'REILLY AUTO PARTS STORE**  
**CLEVELAND HIGHWAY**  
**VARNELL, GA**  
**INTERIOR FINISH PLAN**

**O'Reilly AUTO PARTS**  
 CORPORATE OFFICES  
 233 SOUTH PATTERSON  
 SPRINGFIELD, MISSOURI 65802  
 (417) 862-2674 TELEPHONE

COMM # 4420  
 DATE: 2-28-2020  
 REVISION  
 DATE: 4-10-2020

A1.2

**GENERAL NOTES**

- (A) REFER TO PROJECT MANUAL FOR ADDITIONAL REQUIREMENTS.
- (B) FIXTURES AND EQUIPMENT SHOWN FOR REFERENCE ONLY AND ARE OWNER FURNISHED AND INSTALLED.
- (C) DIMENSIONS TO ROUGH FACE OF ROUGH FRAMING OR FACE OF FIXTURE UNLESS OTHERWISE NOTED.
- (D) ALL FINISH SUBSTITUTION REQUEST REQUIRE OWNER PRIOR APPROVAL.

**INTERIOR FINISH TYPES**

**FLOORS**  
**F-1:**  
 TYPE: POLISHED CONCRETE FINISH  
 MFG: (REFER TO PROJECT MANUAL - SECTION 03 35 43)  
 COLOR: NATURAL CONCRETE, CLEAR

**F-2:**  
 TYPE: LIQUID DENSIFIER TREATED CONCRETE FINISH  
 MFG: (REFER TO PROJECT MANUAL - SECTION 03 30 00)  
 COLOR: NATURAL CONCRETE, CLEAR

**BASE**  
**B-1:**  
 TYPE: RESILIENT BASE  
 MFG: EQUAL TO VP1  
 SIZE: 4" COVE  
 COLOR: JET, #01

**WALLS**  
**W-1: (ONLY WHERE INDICATED)**  
 TYPE: PRE-ENGINEERED METAL BUILDING INTERIOR LINER PANEL  
 MFG: (REFER TO PRE-ENGINEERED METAL BUILDING SHOP DRAWINGS)  
 SERIES: EQUAL TO BUTLER BUILDING "MOD 36" (28 GA.)  
 COLOR: PREFINISHED EQUAL TO BUTLER BUILDING "WHITE" OR "LIGHT STONE"

**W-2:**  
 TYPE: PAINT  
 MFG: SHERWIN WILLIAMS  
 SERIES: SEMI GLOSS LATEX  
 COLOR: SW6126 "NAVAJO WHITE"

**W-3:**  
 TYPE: PAINT  
 MFG: SHERWIN WILLIAMS  
 SERIES: SEMI GLOSS LATEX  
 COLOR: SW6468 "HUNT CLUB"

**W-4:**  
 TYPE: SANITARY WALL AND CEILING PANEL SYSTEM  
 MFG: (REFER PROJECT MANUAL)  
 COLOR: WHITE

**CEILINGS**  
**C-1:**  
 TYPE: ACOUSTICAL TILE CEILING  
 SIZE: 24" X 48" X 5/8", SQUARE EDGE  
 MFG: ARMSTRONG SPECIFIED  
 SERIES: 1729 "FINE FISSURED"  
 COLOR: WHITE  
 GRID SERIES: "PRELUDE" 15/16" EXPOSED TEE SYSTEM  
 GRID COLOR: WHITE

**SEISMIC DESIGN CATEGORY "C":**  
 CONFORM TO ASTM E583  
 -MINIMUM 7/8" WALL MOLDING  
 -SUSPENSION SYSTEM MUST NOT BE ATTACHED TO THE WALL MOLDING  
 -MINIMUM 3/8" CLEARANCE ON ALL SIDES  
 -MINIMUM 3/8" OVERLAP OF THE SUSPENSION SYSTEM ON THE WALL MOLDING  
 -ENDS OF MAIN BEAMS AND CROSS TEES MUST BE TIED TOGETHER TO PREVENT THEIR SPREADING  
 -SAFETY WIRES REQUIRED ON LIGHT FIXTURES

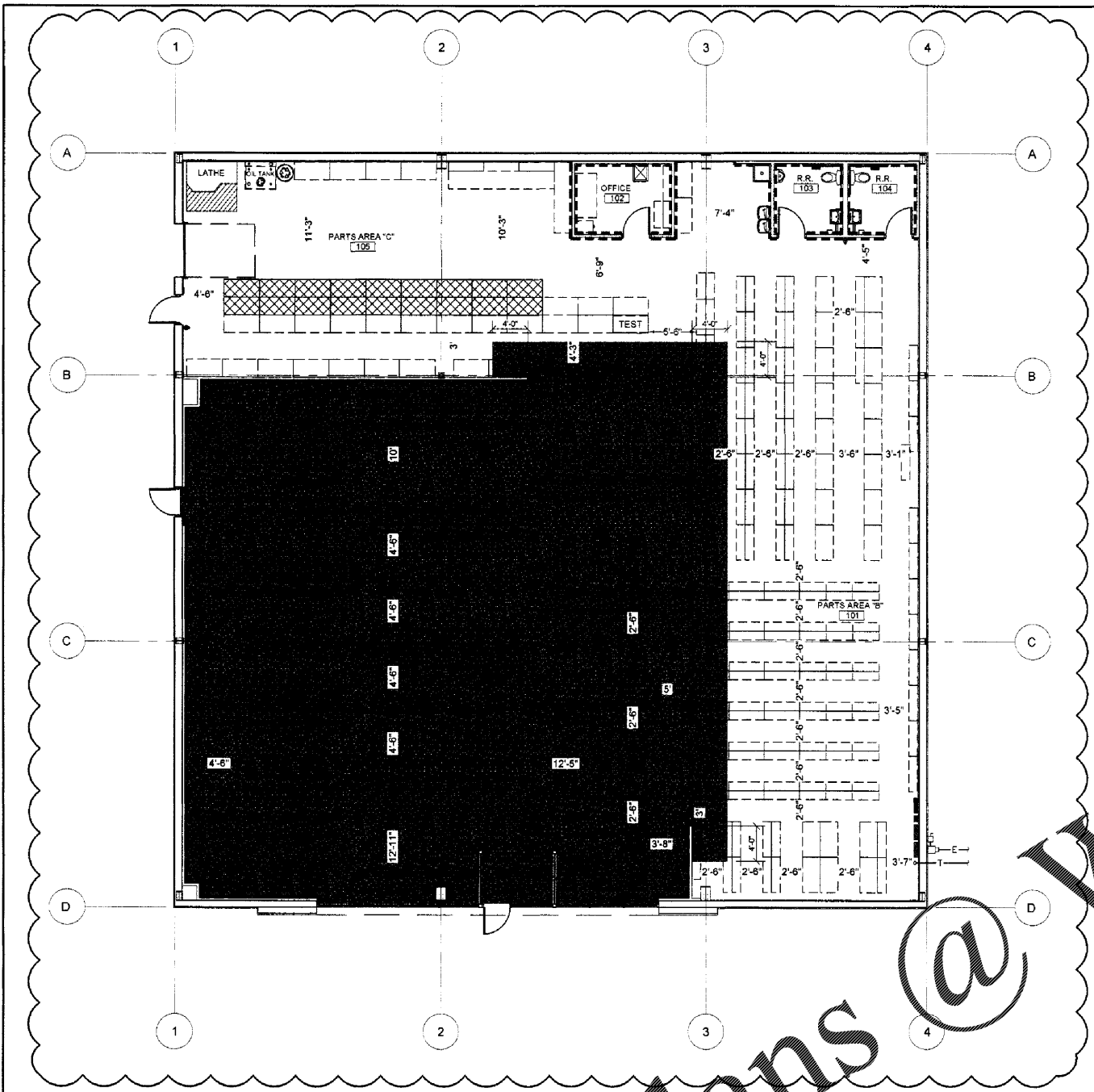
**C-2:**  
 TYPE: EXPOSED INSULATION VAPOR BARRIER (WHITE) AND EXPOSED STEEL FRAMING SYSTEM (FACTORY PRIMED)

**C-3:**  
 TYPE: PAINT  
 MFG: SHERWIN WILLIAMS  
 SERIES: SEMI GLOSS LATEX  
 COLOR: SW6126 "NAVAJO WHITE"

**DOORS AND FRAMES**  
**D-1 (INTERIOR WOOD DOORS):**  
 TYPE: STAIN  
 SPECIES: CUSTOM GRADE ROTARY SLICED NATURAL BIRCH  
 FINISH: FACTORY FINISHED  
 COLOR: EQUAL TO "GRAHAM" #300, MEDIUM BROWN

**D-2 (INTERIOR HOLLOW METAL FRAMES):**  
 TYPE: PAINT  
 MFG: SHERWIN WILLIAMS  
 SERIES: SEMI GLOSS ENAMEL  
 COLOR: SW6468 "HUNT CLUB"

**D-3 (EXTERIOR DOORS & FRAMES):**  
 TYPE: PAINT  
 FINISH: REFER TO EXTERIOR FINISH SCHEDULE  
 COLOR: REFER TO EXTERIOR FINISH SCHEDULE



**1 FINISH PLAN**  
**A1.2 SCALE: 1/8" = 1'-0"**



**INTERIOR FINISH SCHEDULE**

NO.	ROOM OR SPACE	FLOORING		WALLS				CEILING		DOORS		NOTES
		TYPE	BASE	NORTH	EAST	SOUTH	WEST	TYPE	HEIGHT	DOOR	FRAME	
100	PARTS AREA (A)	F-1	B-1	W-2 / W-3	W-2 / W-3	W-2 / W-3	W-2 / W-3	C-1	11'-6"	D-3	D-3	2, 4, 6
100A	VESTIBULE	F-1	-	-	-	-	-	C-3	11'-4"	-	-	-
101	PARTS AREA (B)	F-2	N/A	W-1	W-1	W-2	W-1W-3	C-2	VARIES	-	-	1, 2, 3, 5
102	OFFICE	F-2	B-1	W-2	W-2	W-2	W-2	C-3	8'-6"	D-1	D-2	-
103	REST ROOM	F-2	B-1	W-4	W-4	W-4	W-4	C-3	8'-6"	D-1	D-2	-
104	REST ROOM	F-2	B-1	W-4	W-4	W-4	W-4	C-3	8'-6"	D-1	D-2	-
105	PARTS AREA (C)	F-2	N/A	W-1 / W-3	W-2	W-1	W-1W-3	C-2	VARIES	D-3	D-3	1, 2, 5

**INTERIOR FINISH SCHEDULE NOTES:**  
 1. PAINT EXTERIOR OF 102 OFFICE, 103 RESTROOM, AND 104 RESTROOM WITH W-3 AND PROVIDE BASE B-1 WHERE MULTIPLE WALL FINISH TYPES INDICATED IN SCHEDULE RELATES TO VARIOUS WALL FINISH TYPES BY ROOM OR SPACE PLAN ORIENTATION ONLY AND IS NOT INTENDED AS WAINSCOT PATTERNING OF FINISHES ON A SINGLE WALL PLANE.  
 2. LOCATION OF BASE GRAPHICALLY INDICATED ON DRAWING. REFER SYMBOLS LEGEND.  
 3. PROVIDE PIECES OF 2' LENGTH BASE FOR INSTALLATION AT ENDS OF PARTS AREA "B" FIXTURES FACING PARTS AREA "A".  
 4. REFER TO ELECTRICAL DRAWINGS FOR GRID LAYOUT.  
 5. (WHERE OCCURS) PAINT INTERIOR ISOLATED EXPOSED STRUCTURAL STEEL COLUMNS TO MATCH W-3. (UNLESS OTHERWISE INDICATED) EXPOSED EXTERIOR PERIMETER STRUCTURAL STEEL COLUMNS TO BE FACTORY PRIMED ONLY.  
 6. REFER TO 14/A4.1 FOR PARTS AREA "A" TYPICAL PAINT SCHEME LAYOUT AND FINISH TYPE LOCATIONS FOR ROOM INTERIOR PERIMETER WALLS.

**SYMBOLS LEGEND**

- F-1: POLISHED CONCRETE;
- F-2: LIQUID DENSIFIER TREATED CONCRETE
- B-1: BASE.

Order Plans @ [www.LDILine.com](http://www.LDILine.com)