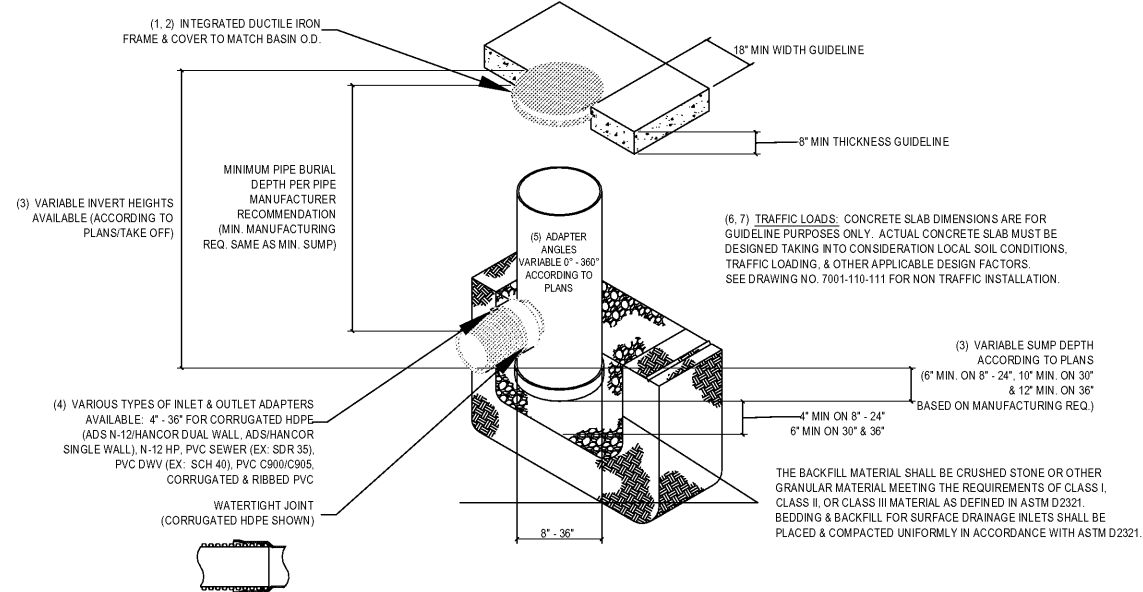


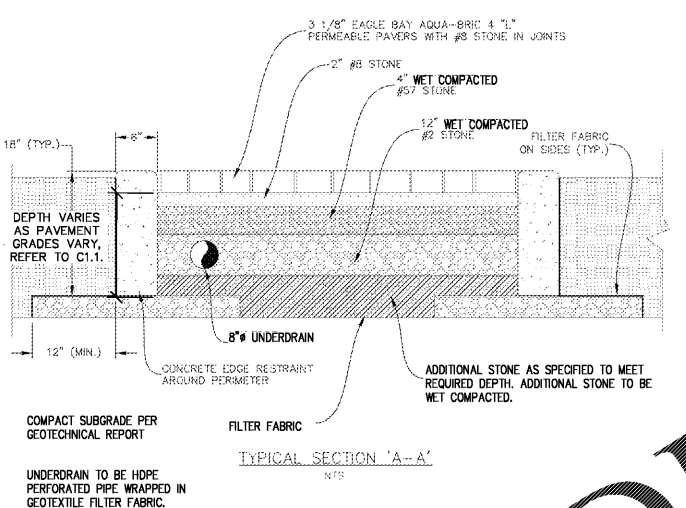
**NYLOPLAST DRAIN BASIN WITH SOLID COVER**



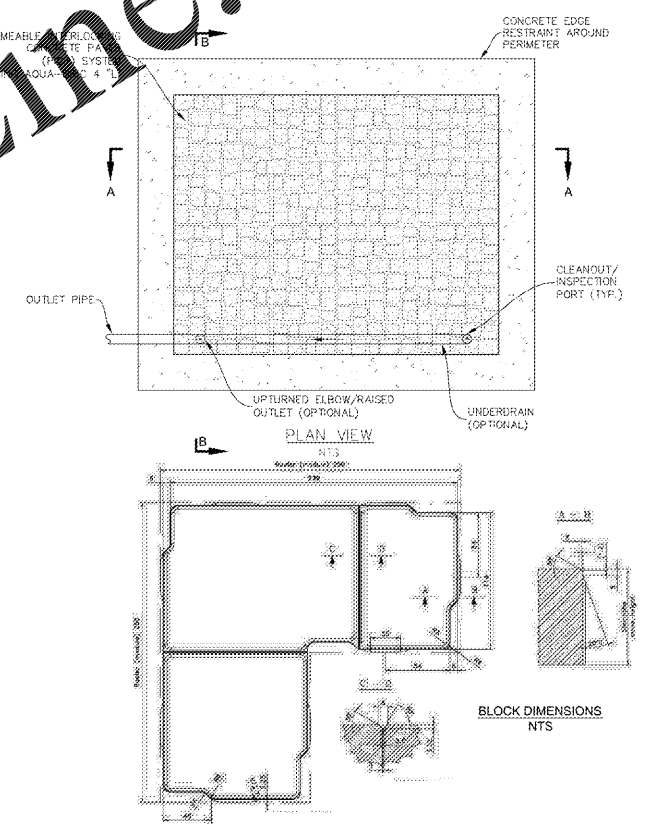
- 1 - 8" - 30" SOLID COVERS SHALL BE DUCTILE IRON PER ASTM A536 GRADE 70-50-05.
- 2 - 12" - 30" FRAMES SHALL BE DUCTILE IRON PER ASTM A536 GRADE 70-50-05.
- 3 - 8" & 10" SOLID COVERS FIT DIRECTLY ONTO DRAIN BASINS WITH THE USE OF A PVC BODY TOP. SEE DRAWING NO. 7001-110-045.
- 4 - DRAIN BASIN TO BE CUSTOM MANUFACTURED ACCORDING TO PLAN DETAILS. RISERS ARE NEEDED FOR BASINS OVER 84" DUE TO SHIPPING RESTRICTIONS. SEE DRAWING NO. 7001-110-055.
- 5 - DRAINAGE CONNECTION STUB JOINT TIGHTNESS SHALL CONFORM TO ASTM D3212 FOR CORRUGATED HDPE (ADS N-12/HANCOR DUAL WALL, N-12HP & PVC SEWER (4" - 36").
- 6 - ADAPTERS CAN BE MOUNTED ON ANY ANGLE 0° TO 360°. TO DETERMINE MINIMUM ANGLE BETWEEN ADAPTERS SEE DRAWING NO. 7001-110-012.
- 7 - 12" - 30" SOLID COVERS SHALL MEET H-20 LOAD RATING.
- 8 - 8" & 10" SOLID COVERS ARE RATED FOR LIGHT DUTY APPLICATIONS ONLY; NO CONCRETE COLLAR NEEDED FOR LIGHT DUTY RATING.

THIS PRINT DISCLOSES SUBJECT MATTER IN WHICH NYLOPLAST HAS PROPRIETARY RIGHTS. THE RECEIPT OR POSSESSION OF THIS PRINT DOES NOT CONFER, TRANSFER, OR LICENSE THE USE OF THE DESIGN OR TECHNICAL INFORMATION SHOWN HEREIN. REPRODUCTION OF THIS PRINT OR ANY INFORMATION CONTAINED HEREIN, OR MANUFACTURE OF ANY ARTICLE HEREFROM FOR THE DISCLOSURE TO OTHERS IS FORBIDDEN, EXCEPT BY SPECIFIC WRITTEN PERMISSION FROM NYLOPLAST. ©2011 NYLOPLAST		DRAWN BY: ESC DATE: 08-14-07 PROJECT NO./NAME:	3130 VERONA AVE BUFORD, GA 30518 PHN: (770) 932-2443 FAX: (770) 932-1690 www.nyloplast.com
REVISED BY: NMH DATE: 08-12-18 DWG SIZE: A SCALE:	TITLE: DRAIN BASIN WITH SOLID COVER QUICK SPEC INSTALLATION DETAIL	SHEET: 1 OF 1 DWG NO: 7001-110-298 REV: E	

**1 TRAFFIC RATED CLEANOUT**  
C1.11 SCALE: NOT TO SCALE



**2 TYPICAL PAVER CROSS SECTION**  
C1.11 SCALE: NOT TO SCALE



**3 TYPICAL SWM PAVE PAVER PLAN VIEW**  
C1.11 SCALE: NOT TO SCALE

**EROSION CONTROL CERTIFICATION:**  
 I CERTIFY UNDER PENALTY OF LAW THAT THIS PLAN WAS PREPARED AFTER A SITE VISIT TO THE LOCATIONS DESCRIBED HEREIN BY MYSELF OR MY AUTHORIZED AGENT, UNDER MY DIRECT SUPERVISION.  
 Aaron T. Hargrave  
 0000089429 / 10-18-2022  
 LEVEL II CERTIFICATION / EXPIRATION DATE

**ANDERSON ENGINEERING**  
 EMPLOYEE OWNED  
 ENGINEERS • SURVEYORS • LABORATORIES • DRILLING  
 3213 S. WEST BYPASS • SPRINGFIELD, MISSOURI 65807 • PHONE (417) 866-2741  
 ANDERSON.COM • PEO#044572 • AARON T. HARGRAVE: PEO#44572  
 REVISIONS:  
 19SP1022.1 [DATE: 10/18/2022] BY: AMS DRAWING # [REDACTED] [DATE: 10/18/2022] [BY: ATH]



**CRAIG A. SCHNEIDER, AIA**  
 ARCHITECT  
 1736 East Sunshine, Suite 417  
 Springfield, Missouri 65804  
 417.862.0558  
 Fax: 417.862.3265  
 e-mail: architect@esterjtschneider.com

PROJECT:  
**NEW O'REILLY AUTO PARTS STORE**  
 CLEVELAND HIGHWAY  
 VARNELL, GA  
**PAVER DETAILS**

**O'Reilly AUTO PARTS**  
 CORPORATE OFFICES  
 283 SOUTH PATTERSON  
 SPRINGFIELD, MISSOURI 65802  
 (417) 862-2874 TELEPHONE

COMM #	4420
DATE:	9-16-2020
REVISION DATE:	

C1.11