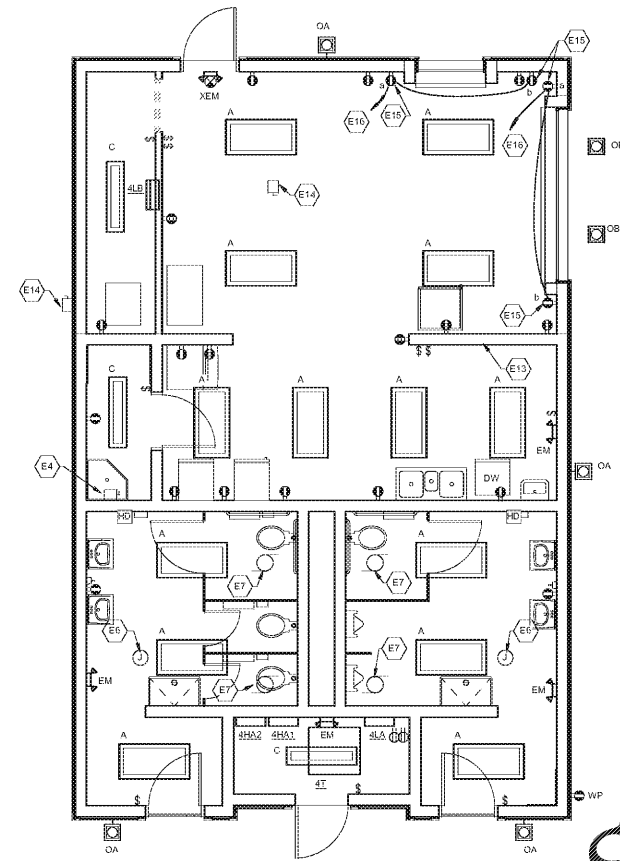


BUILDING C GENERAL NOTES

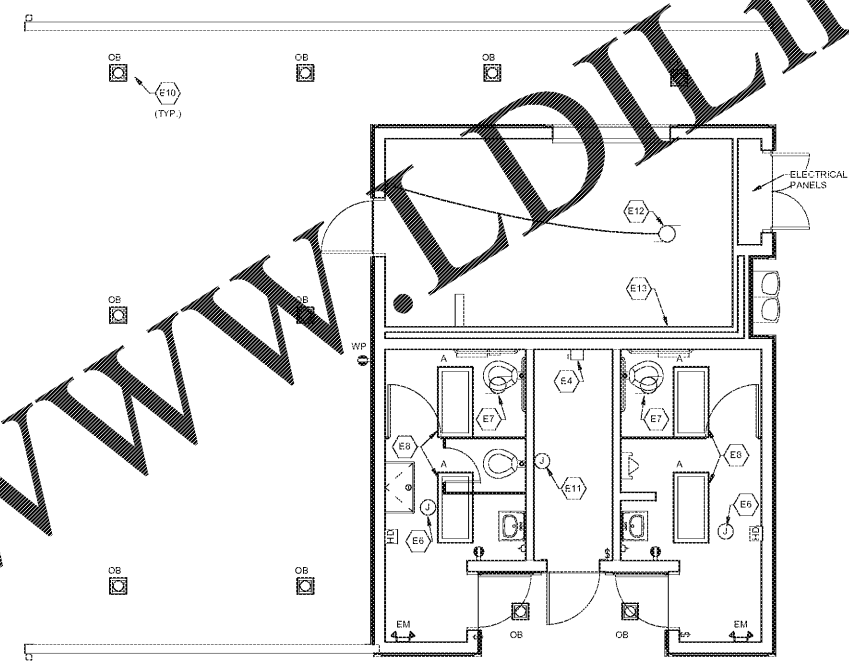
- UNLESS NOTED OTHERWISE, PROVIDE NEW ELECTRICAL LIGHTING FIXTURES, LIGHT SWITCHES, RECEPTACLES, COVERPLATES, HOOD DRYERS, ETC. AT EXISTING LOCATIONS.

ELECTRICAL PLAN KEYNOTES

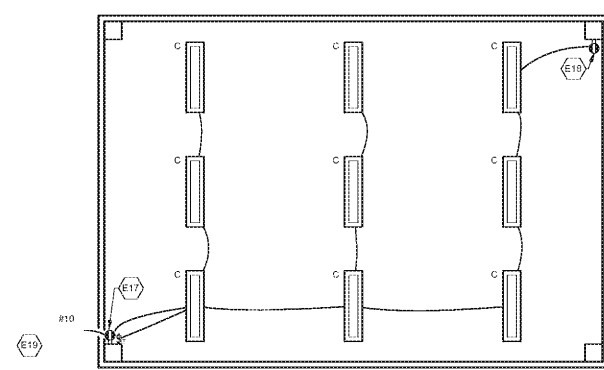
VALUE	NOTE
E4	DISCONNECT FOR WATER HEATER. DISCONNECT EXISTING WATER HEATER AND RECONNECT NEW WATER HEATER.
E6	DISCONNECT EXISTING GELD HEATER AND RECONNECT NEW GELD HEATER.
E7	DISCONNECT EXISTING EXHAUST FAN AND RECONNECT NEW EXHAUST FAN. RECIRCUIT IF NECESSARY SO FAN IS CONTROLLED WITH LIGHTING FIXTURES IN THE ROOM.
E8	LIGHTING FIXTURE IN NEW LOCATION. RECIRCUIT TO EXISTING CIRCUITS.
E10	REMOVE EXISTING LIGHTING FIXTURE AND PROVIDE NEW SURFACE MOUNTED FIXTURE. REPAIR CEILING AS NECESSARY IF NEW FIXTURE DOES NOT COVER ENTIRE OPENING.
E11	DISCONNECT EXISTING WALL HEATER AND RECONNECT NEW WALL HEATER.
E12	NEW FAN EFF. 150% O.D.M. 1/3. PROVIDE NEW BRANCH CIRCUIT - 2H2, F150, 34FC. PROVIDE NEW 15A/1P CIRCUIT BREAKER IN PANELBOARD. PROVIDE NEW SWITCH FOR CONTROL.
E13	DISCONNECT EXISTING HOOD. DEMO BRANCH CIRCUIT TO FAN/FOU.
E14	DISCONNECT EXISTING CUT/POU AND RECONNECT TO FAN/FOU.
E15	NEW DUPLEX 6P RECEPTACLE.
E16	CIRCUIT TO (2) 20A/1P CIRCUIT BREAKER IN PANELBOARD 3A OR 4B. PROVIDE NEW CIRCUIT BREAKERS.
E17	MOUNT RECEPTACLE AND TRIP (ALR) UNDER SAME WEATHERPOOF IN-USE COVER AT 4'-0" AFF.
E18	MOUNT RECEPTACLE WITH WEATHERPOOF IN-USE COVER AT 4'-0" AFF.
E19	CIRCUIT TO 20A/1P CIRCUIT BREAKER IN PANELBOARD 3A OR 3B IN BUILDING B. PROVIDE NEW CIRCUIT BREAKERS.



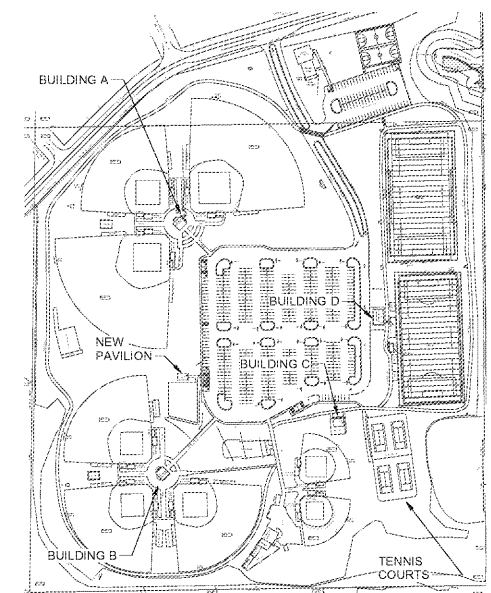
2 BUILDING D
1/4" = 1'-0"



1 BUILDING C
1/4" = 1'-0"



3 PAVILION
1/4" = 1'-0"



KEY PLAN

Order Plans @ WWW.LDILine.com

ROBERTSON LOIA ROOF
ARCHITECTS & ENGINEERS
2460 Preston Ridge Road - Suite 275 - Alpharetta, GA 30015
770-674-2600 / www.rlrpc.com
GA CO# 96000692 EXP# 96000692



Sawnee Mountain Park Renovations
3995 WATSON ROAD
CUMMING, GA 30028
FOR: Forsyth Co. Parks & Rec. Dept.
P.O. BOX 2417
CUMMING, GA 30028

REVISIONS

SHEET TITLE
**ELECTRICAL PLANS - BUILDINGS
C, D, & PAVILION**

DATE
08/04/2020

PROJECT NUMBER
19323

SHEET NUMBER
E1.3