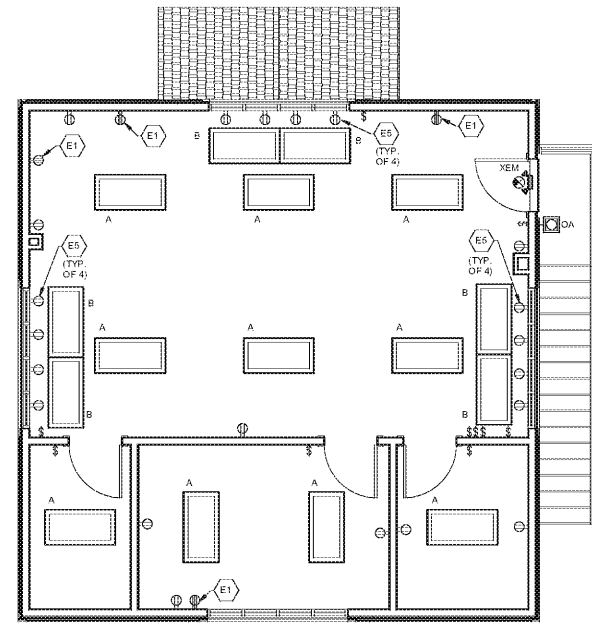


**BUILDING B GENERAL NOTES**

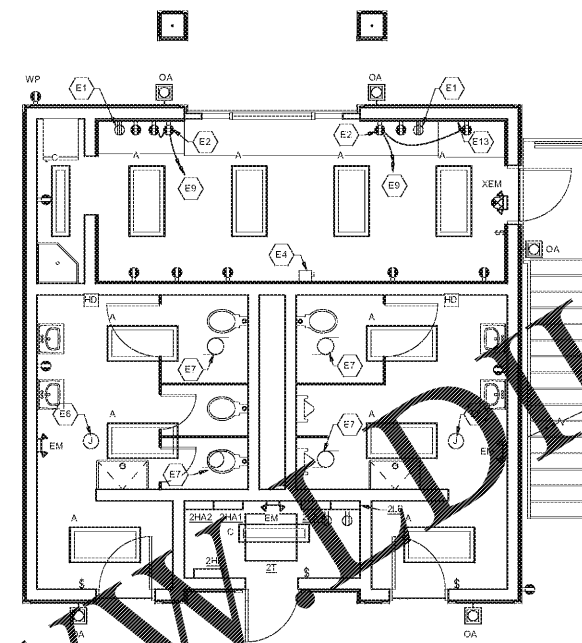
1. UNLESS NOTED OTHERWISE, PROVIDE NEW ELECTRICAL LIGHTING FIXTURES, LIGHT SWITCHES, RECEPTACLES, COVERPLATES, HAND DRYERS, ETC. AT EXISTING LOCATIONS.

**ELECTRICAL PLAN KEYNOTES**

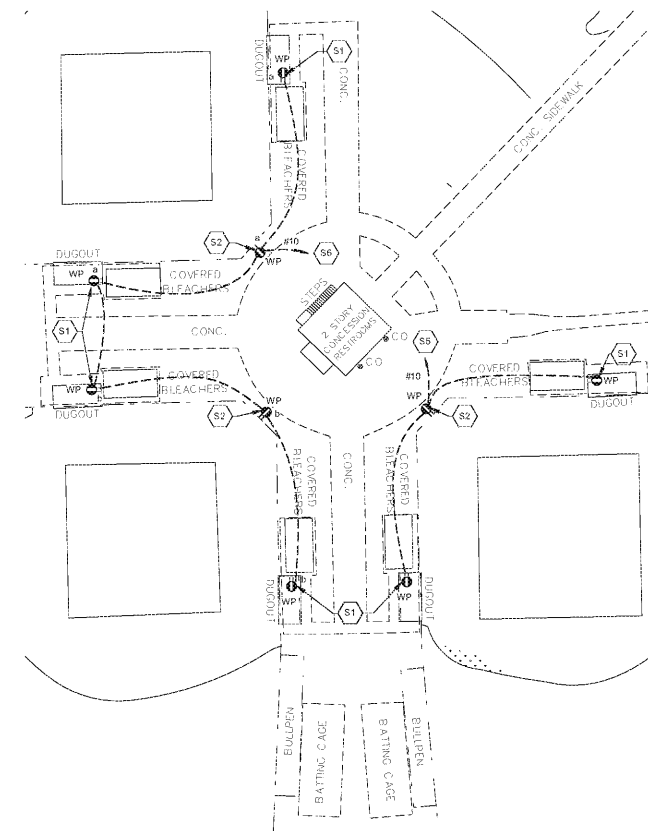
VALUE	NOTE
E1	RECEPTACLE FOR PTAC UNIT (HVAC). VERIFY EXACT CONFIGURATION.
E2	NEW DOUBLE DUPLEX GFI RECEPTACLE. CIRCUIT AS INDICATED EACH DUPLEX RECEPTACLE TO SEPARATE CIRCUIT.
E4	CONNECTION FOR WATER HEATER. DISCONNECT EXISTING WATER HEATER AND RECONNECT NEW WATER HEATER.
E5	RECEPTACLE MOUNTED IN WIREWAY.
E6	DISCONNECT EXISTING CEILING HEATER AND RECONNECT NEW CEILING HEATER.
E7	DISCONNECT EXISTING EXHAUST FAN AND RECONNECT NEW EXHAUST FAN. RECONNECT IF NECESSARY SO FAN IS CONTROLLED WITH LIGHTING FIXTURES IN THE ROOM.
E9	CIRCUIT TO 120V/1P CIRCUIT BREAKER IN PANELBOARD 2/A OR 2/B. PROVIDE NEW CIRCUIT BREAKERS.
E13	DISCONNECT EXISTING HOOD. DEMO BRANCH CIRCUIT.
S1	MOUNT RECEPTACLE AT TOP OF WALL OF DUCTWORK NEAR CEILING FOR FAN.
S2	MOUNT RECEPTACLE AT FENCE BACKSIDE OF CEILING FOR FAN.
S5	CIRCUIT TO 208V/1P CIRCUIT BREAKER IN PANELBOARD 2/A OR 2/B. PROVIDE NEW CIRCUIT BREAKERS.
S6	CIRCUIT TO 120V/1P CIRCUIT BREAKER IN PANELBOARD 2/A OR 2/B. PROVIDE NEW CIRCUIT BREAKERS.



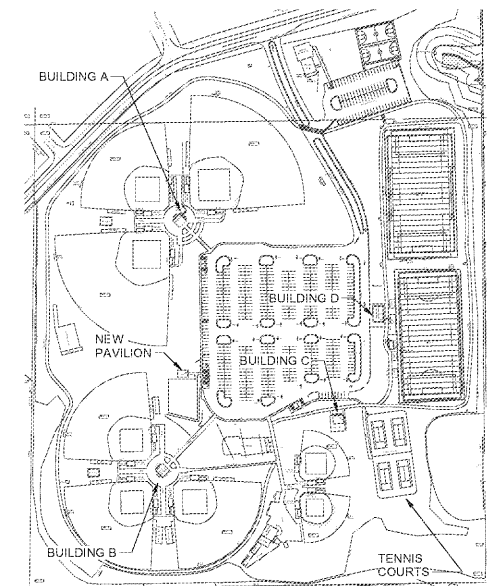
**BUILDING B 2ND FLOOR**  
1/4" = 1'-0"



**BUILDING B 1ST FLOOR**  
1/4" = 1'-0"



**ELECTRICAL SITE PLAN**  
1" = 30'-0"



**KEY PLAN**

Order Plans @ [www.dlLine.com](http://www.dlLine.com)

**ROBERTSON LOIA ROOF**  
ARCHITECTS & ENGINEERS  
4450 Preston Ridge Road - Suite 275 - Alpharetta, GA 30015  
770-474-2600 / rloia@rllrc.com  
GA CON # PE000062 EXP#RES 06/05/2022



Sawnee Mountain Park Renovations  
3995 WATSON ROAD  
CUMMING, GA 30028  
FOR: Forsyth Co. Parks & Rec. Dept.  
P.O. BOX 2417  
CUMMING, GA 30028

REVISIONS


SHEET TITLE  
**ELECTRICAL PLANS - BUILDING B**

DATE  
**08/04/2020**

PROJECT NUMBER  
**19323**

SHEET NUMBER  
**E1.2**